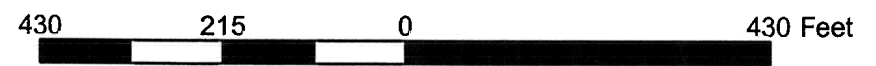
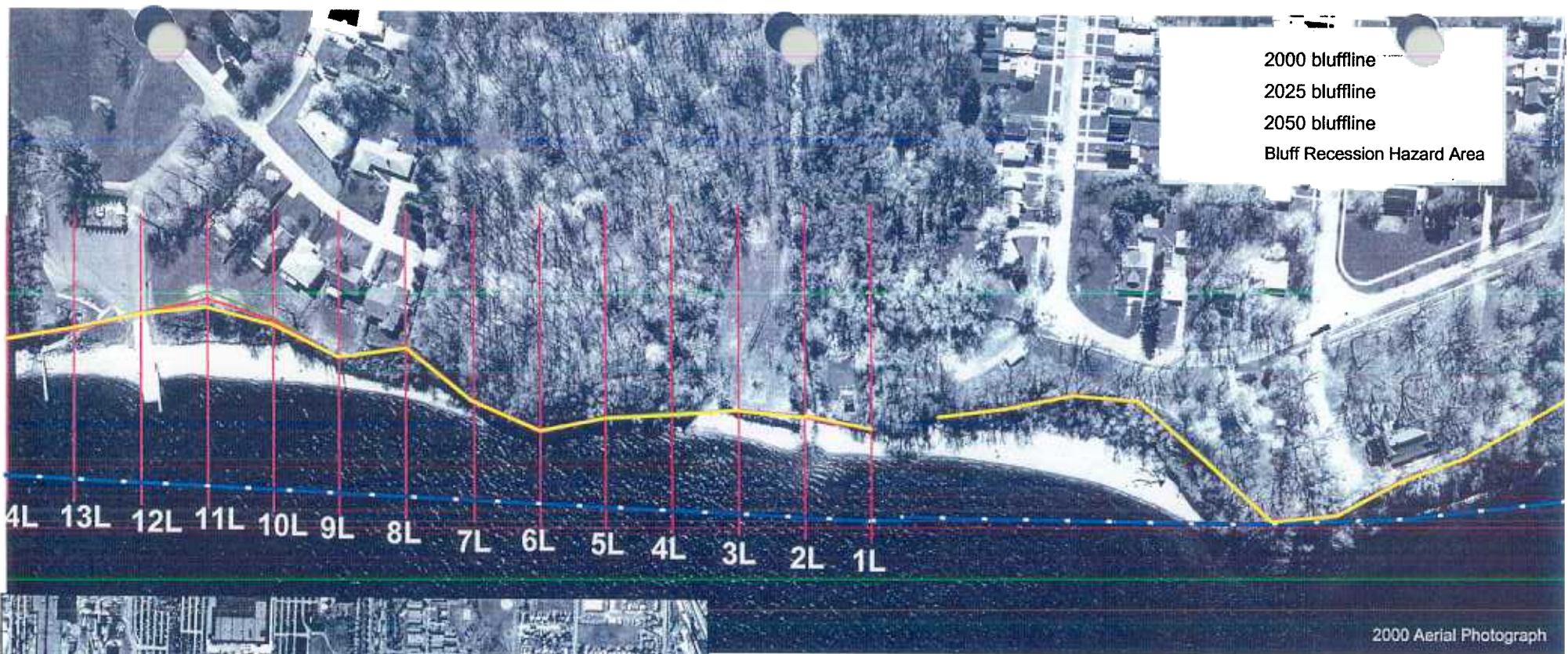


Lawrence Park Township, PA

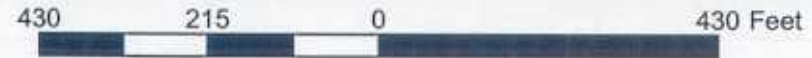
Bluff Recession Hazard Area Maps



Transect	1	2	3	4	5	6	7
predicted recession by 2025	0.0	0.0	0.0	0.0	0.0	0.0	0.0
predicted recession by 2050	0.0	0.0	0.0	0.0	0.0	0.0	0.0
recession rate (ft/yr)	0.0	0.0	0.0	0.0	0.0	0.0	0.0

Transect	8	9	10	11	12	13
predicted recession by 2025	0.0	0.0	7.8	14.2	0.0	0.0
predicted recession by 2050	0.0	0.0	11.5	21.7	0.0	0.0
recession rate (ft/yr)	0.0	0.0	0.1	0.3	0.0	0.0

No measurable change in bluff location, but instability and/or signs of bluff recession were observed near transect, therefore this transect is in a Bluff Recession Hazard Area

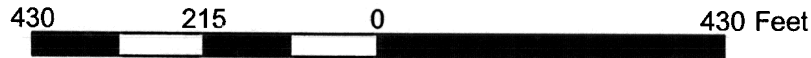
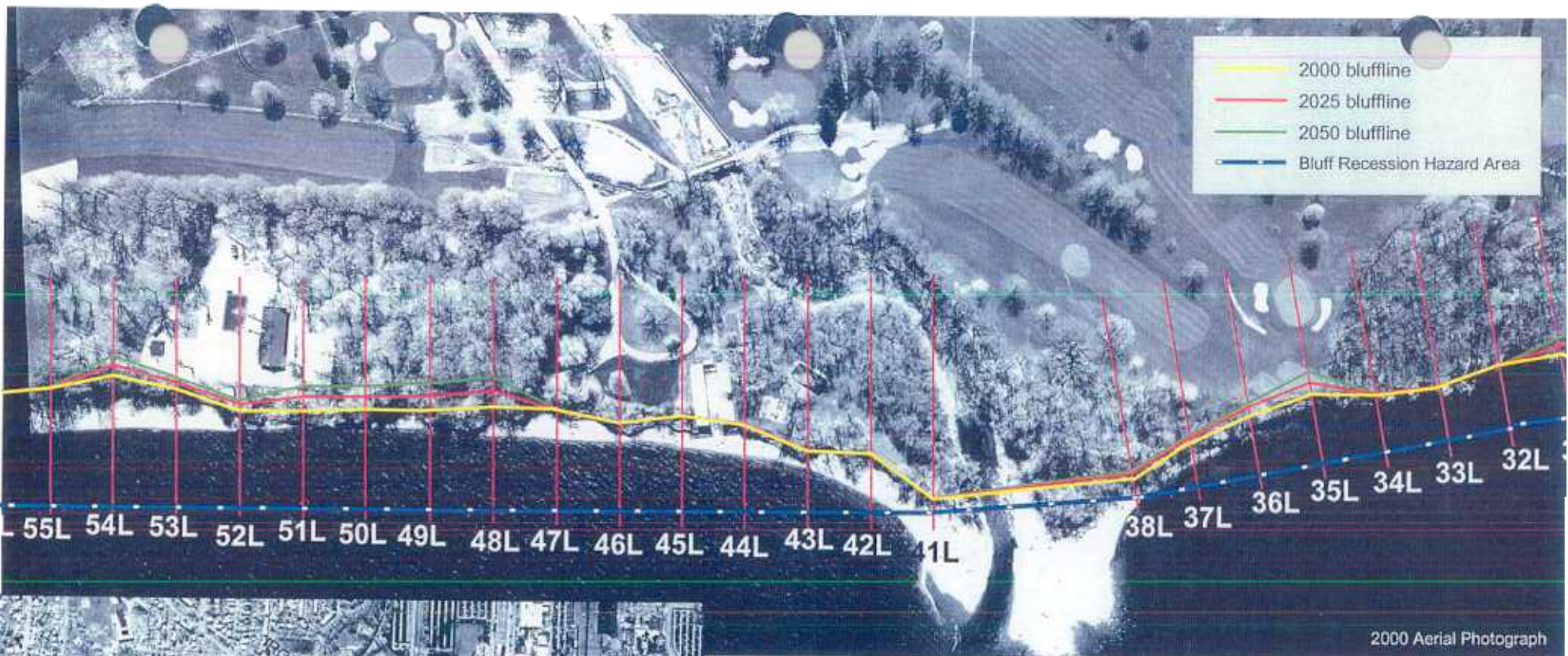


Transect	14	15	16	17	18	19	20
predicted recession by 2025	0.0	6.1	18.2	10.6	0.0	0.0	0.0
predicted recession by 2050	0.0	12.9	32.7	16.1	0.0	0.0	0.0
recession rate (ft/yr)	0.0	0.3	0.6	0.2	0.0	0.0	0.0

Transect	21	22	23	24	25	26	27
predicted recession by 2025	0.0	0.0	13.2	14.4	19.2	12.3	0.0
predicted recession by 2050	0.0	0.0	21.6	24.1	31.8	19.8	0.0
recession rate (ft/yr)	0.0	0.0	0.3	0.4	0.5	0.3	0.0

Transect	28	29	30	31	32	33	34
predicted recession by 2025	10.9	10.6	9.4	19.0	0.0	0.0	9.4
predicted recession by 2050	17.0	16.4	13.8	32.6	0.0	0.0	13.9
recession rate (ft/yr)	0.2	0.2	0.2	0.5	0.0	0.0	0.2

No measurable change in bluff location, but instability and/or signs of bluff recession were observed near transect, therefore this transect is in a Bluff Recession Hazard Area

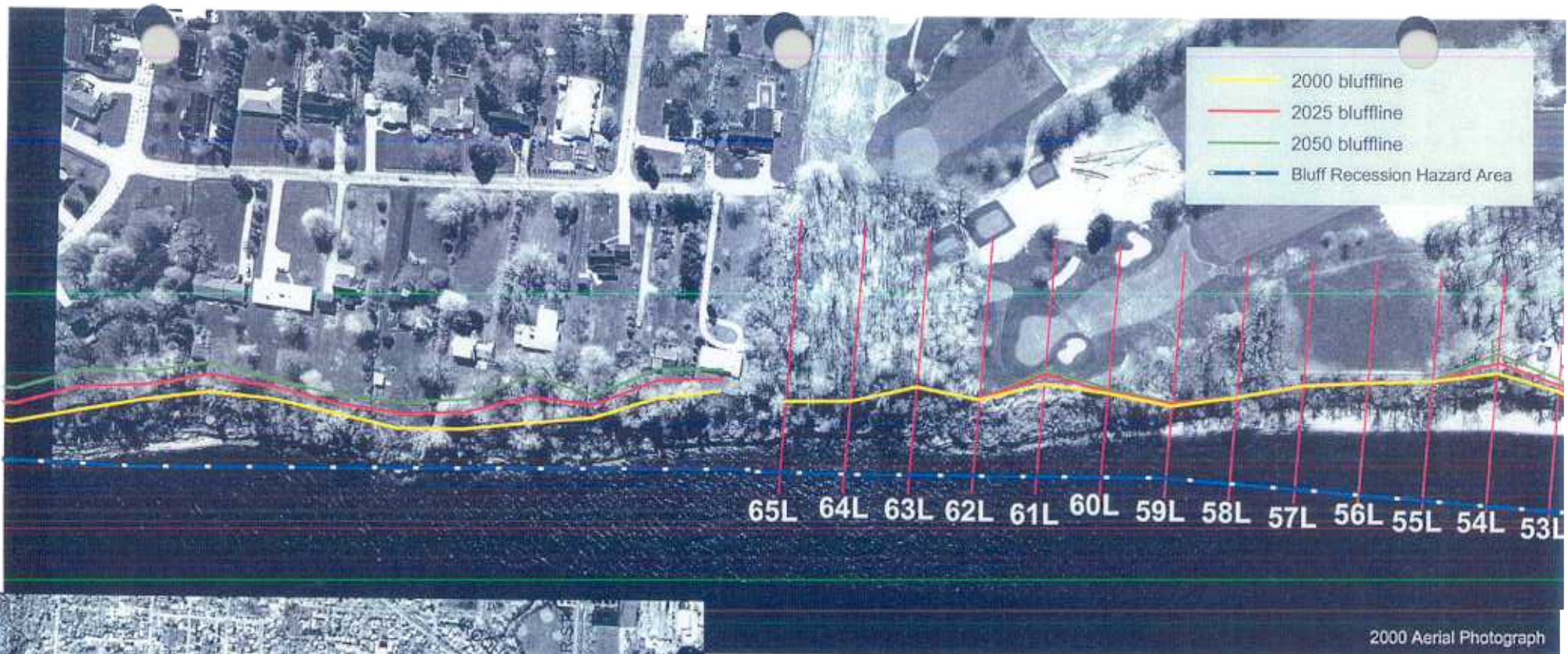


Transect	35	36	37	38	39	40	41
predicted recession by 2025	20.0	12.0	11.3	9.5			0.0
predicted recession by 2050	35.1	19.2	17.7	14.0			0.0
recession rate (ft/yr)	0.6	0.3	0.3	0.2	discard	discard	0.0

Transect	42	43	44	45	46	47	48
predicted recession by 2025	0.0	0.0	0.0	0.0	0.0	0.0	25.5
predicted recession by 2050	0.0	0.0	0.0	0.0	0.0	0.0	46.1
recession rate (ft/yr)	0.0	0.0	0.0	0.0	0.0	0.0	0.8

Transect	49	50	51	52	53	54
predicted recession by 2025	22.7	19.8	22.8	11.1	10.6	17.5
predicted recession by 2050	43.3	36.3	40.4	16.9	17.6	30.9
recession rate (ft/yr)	0.8	0.7	0.7	0.2	0.3	0.5

No measurable change in bluff location, but instability and/or signs of bluff recession were observed near transect, therefore this transect is in a Bluff Recession Hazard Area



Transect	55	56	57	58	59	60	61
predicted recession by 2025	0.0	0.0	0.0	0.0	0.0	0.0	13.1
predicted recession by 2050	0.0	0.0	0.0	0.0	0.0	0.0	22.8
recession rate (ft/yr)	0.0	0.0	0.0	0.0	0.0	0.0	0.4

Transect	62	63	64	65
predicted recession by 2025	0.0	0.0	0.0	0.0
predicted recession by 2050	0.0	0.0	0.0	0.0
recession rate (ft/yr)	0.0	0.0	0.0	0.0

No measurable change in bluff location, but instability and/or signs of bluff recession were observed near transect, therefore this transect is in a Bluff Recession Hazard Area