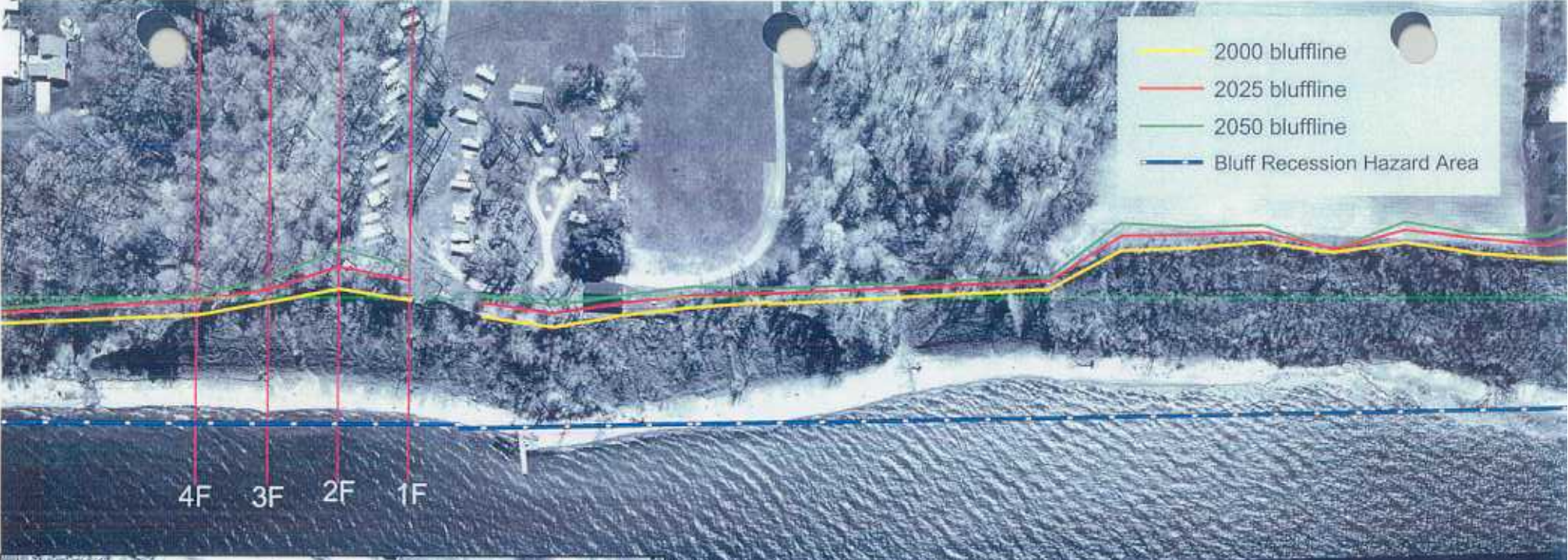
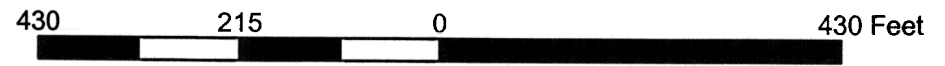
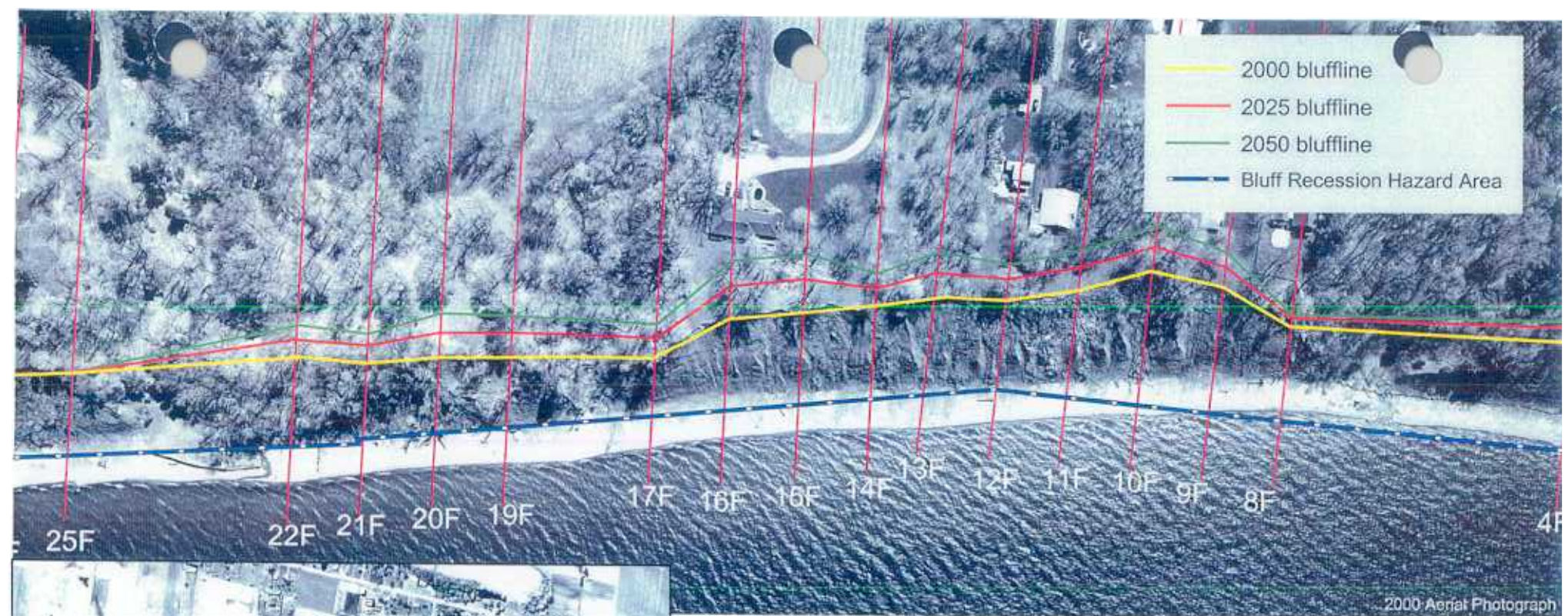


**Fairview Township, PA**  
**Buff Recession Hazard Area Maps**



Transect	1	2	3	4
predicted recession by 2025	27.7	32.2	17.0	18.4
predicted recession by 2050	46.9	56.5	27.6	30.0
recession rate (ft/yr)	0.8	1.0	0.4	0.5



Transect	5	6	7	8	9	10	11
predicted recession by 2025				12.7	27.0	35.3	32.0
predicted recession by 2050				18.9	47.6	64.2	55.3
recession rate (ft/yr)	discard	discard	discard	0.2	0.8	1.2	0.9

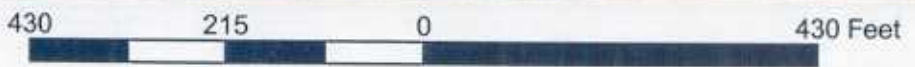
Transect	12	13	14	15	16	17	18
predicted recession by 2025	28.7	32.8	25.2	42.3	43.8	27.9	
predicted recession by 2050	50.4	60.0	44.8	76.7	79.3	46.0	
recession rate (ft/yr)	0.9	1.1	0.8	1.4	1.4	0.7	discard

Transect	19	20	21	22	23	24	25
predicted recession by 2025	31.5	34.0	23.7	24.8			0.0
predicted recession by 2050	56.5	61.5	39.5	41.9			0.0
recession rate (ft/yr)	1.0	1.1	0.6	0.7	discard	discard	0.0

No measurable change in bluff location, but instability and/or signs of bluff recession were observed near transect, therefore this transect is in a Bluff Recession Hazard Area



- 2000 bluffline
- 2025 bluffline
- 2050 bluffline
- Bluff Recession Hazard Area



Transect	26	27	28	29	30	31	32
predicted recession by 2025	0.0	0.0	0.0	36.7	25.9	17.6	33.2
predicted recession by 2050	0.0	0.0	0.0	69.8	47.6	34.0	63.8
recession rate (ft/yr)	0.0	0.0	0.0	1.3	0.9	0.7	1.2

Transect	33	34	35	36	37	38	39
predicted recession by 2025	25.8	25.8	15.0	0.0	16.0	14.3	16.4
predicted recession by 2050	45.2	46.5	23.5	0.0	27.3	22.2	26.9
recession rate (ft/yr)	0.8	0.8	0.3	0.0	0.5	0.3	0.4

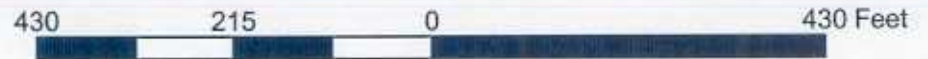
Transect	40	41	42	43	44	45	46
predicted recession by 2025	18.9	15.3	33.2	26.5	21.4		
predicted recession by 2050	30.5	24.1	59.9	48.6	38.5		
recession rate (ft/yr)	0.5	0.4	1.1	0.9	0.7	discard	discard

No measurable change in bluff location, but instability and/or signs of bluff recession were observed near transect, therefore this transect is in a Bluff Recession Hazard Area



- 2000 bluffline
- 2025 bluffline
- 2050 bluffline
- Bluff Recession Hazard Area

3F 67F 66F 65F 64F 60F 59F 58F 57F 56F 55F 54F 53F 52F 51F 50F 49F 48F 47F



Transect	47	48	49	50	51	52	53
predicted recession by 2025	16.8	23.6	0.0	0.0	0.0	0.0	20.0
predicted recession by 2050	27.1	40.6	0.0	0.0	0.0	0.0	33.5
recession rate (ft/yr)	0.4	0.7	0.0	0.0	0.0	0.0	0.5

Transect	54	55	56	57	58	59	60
predicted recession by 2025	25.1	28.5	28.0	37.0	16.5	24.1	19.8
predicted recession by 2050	43.7	50.5	53.6	68.9	35.0	41.4	33.1
recession rate (ft/yr)	0.7	0.9	1.0	1.3	0.7	0.7	0.5

Transect	61	62	63	64	65	66	67
predicted recession by 2025				39.0	30.9	48.3	35.9
predicted recession by 2050				65.2	57.3	87.5	64.7
recession rate (ft/yr)	discard	discard	discard	1.0	1.1	1.6	1.2

No measurable change in bluff location, but instability and/or signs of bluff recession were observed near transect, therefore this transect is in a Bluff Recession Hazard Area

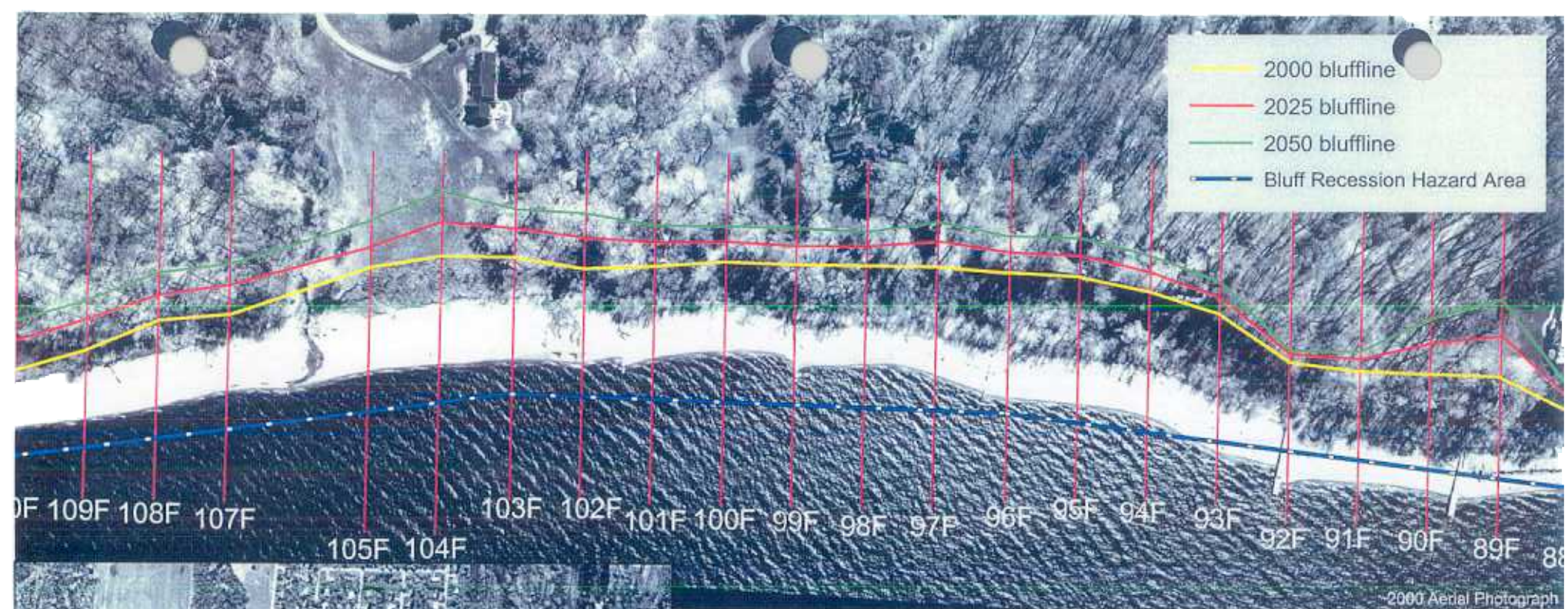


Transect	68	69	70	71	72	73	74
predicted recession by 2025	25.5	39.0	34.1	42.9	32.7	16.1	29.7
predicted recession by 2050	48.7	67.2	61.7	79.3	58.9	25.8	52.9
recession rate (ft/yr)	0.9	1.1	1.1	1.5	1.0	0.4	0.9

Transect	75	76	77	78	79	80	81
predicted recession by 2025		35.7	20.9	30.5	0.0	0.0	
predicted recession by 2050		64.9	35.2	54.4	0.0	0.0	
recession rate (ft/yr)	discard	1.2	0.6	1.0	0.0	0.0	discard

Transect	82	83	84	85	86	87	88
predicted recession by 2025						21.4	19.9
predicted recession by 2050						36.3	33.3
recession rate (ft/yr)	discard	discard	discard	discard	discard	0.6	0.5

No measurable change in bluff location, but instability and/or signs of bluff recession were observed near transect, therefore this transect is in a Bluff Recession Hazard Area

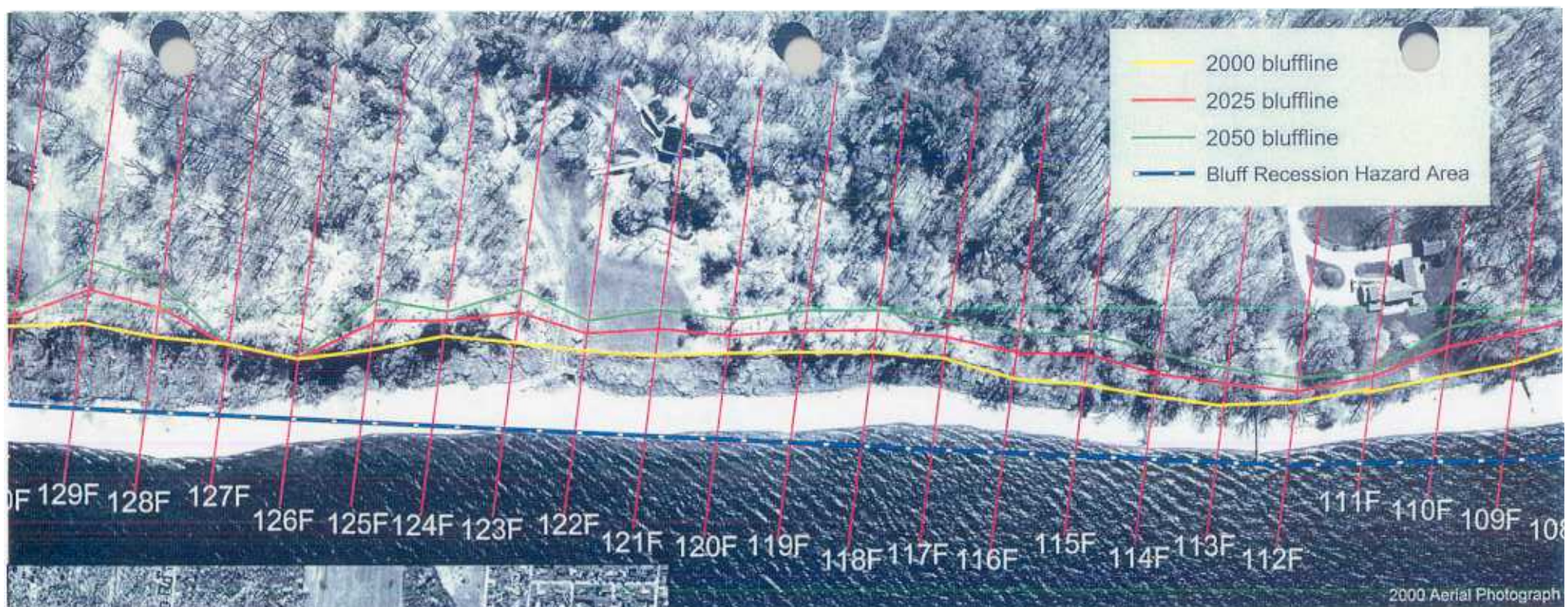


Transect	89	90	91	92	93	94	95
predicted recession by 2025	57.8	42.1	16.3	10.9	25.2	28.3	30.6
predicted recession by 2050	109.2	77.7	26.3	15.3	43.9	50.2	54.7
recession rate (ft/yr)	2.1	1.4	0.4	0.2	0.7	0.9	1.0

Transect	96	97	98	99	100	101	102
predicted recession by 2025	28.3	35.4	27.6	28.0	28.3	33.7	43.2
predicted recession by 2050	50.2	64.3	48.8	49.4	50.0	60.9	79.9
recession rate (ft/yr)	0.9	1.2	0.8	0.9	0.9	1.1	1.5

Transect	103	104	105	106	107	108	109
predicted recession by 2025	63.0	49.9	34.8		40.8	33.6	39.4
predicted recession by 2050	108.5	91.5	71.0		71.1	67.4	70.2
recession rate (ft/yr)	1.8	1.7	1.4	discard	1.2	1.4	1.2





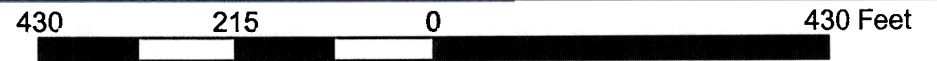
Transect	110	111	112	113	114	115	116
predicted recession by 2025	40.1	19.3	24.4	28.5	32.2	40.8	36.9
predicted recession by 2050	70.3	31.4	42.4	50.9	58.6	73.4	63.8
recession rate (ft/yr)	1.2	0.5	0.7	0.9	1.1	1.3	1.1

Transect	117	118	119	120	121	122	123
predicted recession by 2025	30.6	31.7	31.5	25.4	34.5	24.8	41.5
predicted recession by 2050	52.4	58.0	60.4	47.7	62.1	42.5	74.2
recession rate (ft/yr)	0.9	1.1	1.2	0.9	1.1	0.7	1.3

Transect	124	125	126	127	128	129	130
predicted recession by 2025	19.9	40.5	0.0	0.0	40.8	46.8	15.4
predicted recession by 2050	33.3	71.7	0.0	0.0	76.3	87.8	27.0
recession rate (ft/yr)	0.5	1.2	0.0	0.0	1.4	1.6	0.8

**Bluff Recession Hazard Area** (Yellow background): No measurable change in bluff location, but instability and/or signs of bluff recession were observed near transect, therefore this transect is in a Bluff Recession Hazard Area



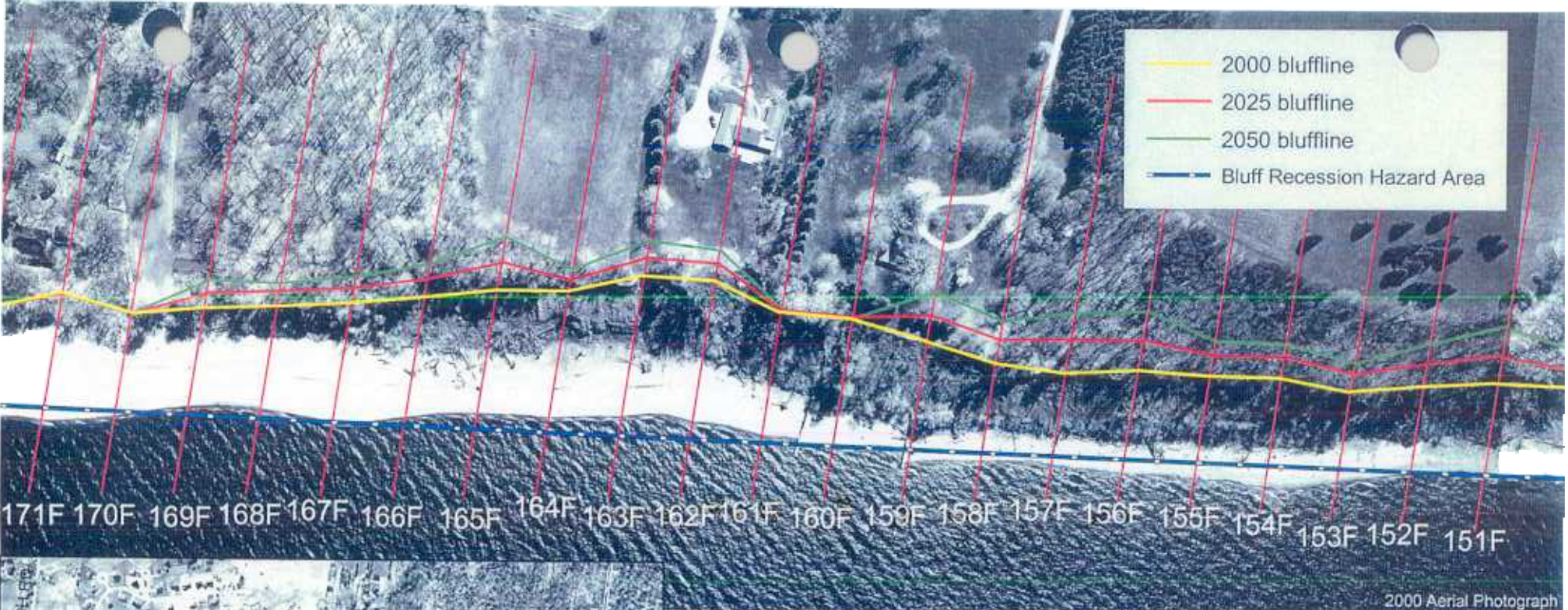


Transect	130	131	132	133	134	135	136
predicted recession by 2025	15.4	20.0	46.1	44.7	37.6	0.0	17.0
predicted recession by 2050	27.0	33.6	85.8	82.8	68.7	0.0	27.5
recession rate (ft/yr)	0.8	0.5	1.6	1.5	1.2	0.0	0.4

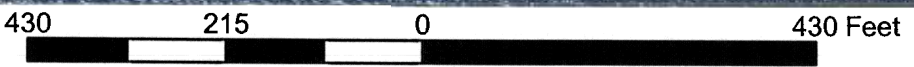
Transect	137	138	139	140	141	142	143
predicted recession by 2025				43.6	73.5	60.4	66.1
predicted recession by 2050				86.6	140.0	110.8	125.6
recession rate (ft/yr)	discard	discard	discard	1.7	2.7	1.0	2.4

Transect	144	145	146	147	148	149	150
predicted recession by 2025	19.9	22.3	21.4	0.0	0.0		
predicted recession by 2050	33.4	38.1	36.3	0.0	0.0		
recession rate (ft/yr)	0.5	0.6	0.6	0.0	0.0	discard	discard

No measurable change in bluff location, but instability and/or signs of bluff recession were observed near transect, therefore this transect is in a Bluff Recession Hazard Area



- 2000 bluffline
- 2025 bluffline
- 2050 bluffline
- Bluff Recession Hazard Area



Transect	151	152	153	154	155	156	157
predicted recession by 2025	44.0	31.6	24.5	26.5	28.6	42.0	46.7
predicted recession by 2050	82.9	62.3	42.8	47.7	50.0	81.8	87.0
recession rate (ft/yr)	1.6	1.2	0.7	0.8	0.9	1.6	1.6

Transect	158	159	160	161	162	163	164
predicted recession by 2025	32.4	38.2	0.0	0.0	25.4	33.6	17.5
predicted recession by 2050	58.3	69.9	0.0	0.0	44.2	60.6	32.1
recession rate (ft/yr)	1.0	1.3	0.0	0.0	0.8	1.1	0.6

Transect	165	166	167	168	169	170	171
predicted recession by 2025	38.2	24.8	22.8	19.7	23.2	0.0	0.0
predicted recession by 2050	72.6	46.5	39.9	32.8	41.5	0.0	0.0
recession rate (ft/yr)	1.4	0.9	0.7	0.5	0.7	0.0	0.0

No measurable change in bluff location, but instability and/or signs of bluff recession were observed near transect, therefore this transect is in a Bluff Recession Hazard Area



- 2000 bluffline
- 2025 bluffline
- 2050 bluffline
- Bluff Recession Hazard Area

172F 171F  
2000 Aerial Photograph



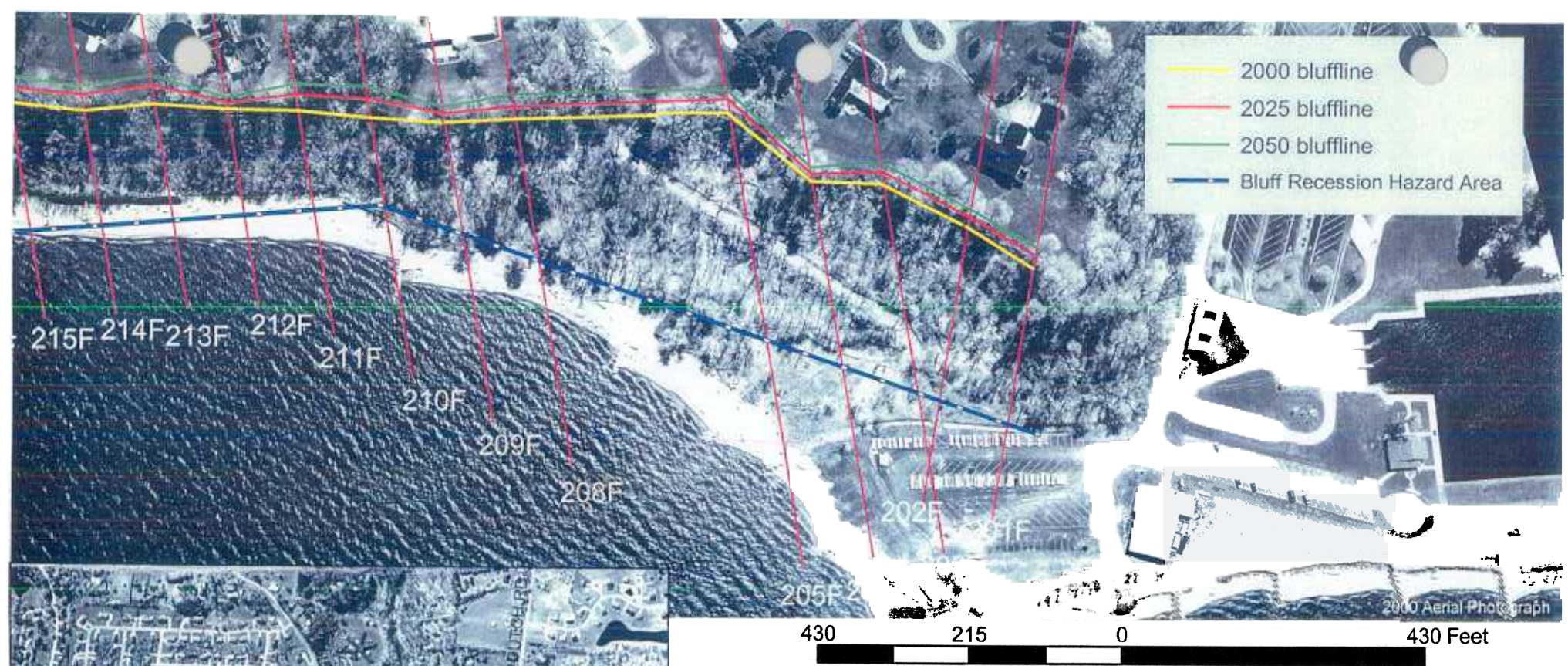
Transect	172	173	174	175	176	177	178
predicted recession by 2025	0.0						
predicted recession by 2050	0.0						
recession rate (ft/yr)	0.0	discard	discard	discard	discard	discard	discard

Transect	179	180	181	182	183	184	185
predicted recession by 2025							
predicted recession by 2050							
recession rate (ft/yr)	discard	discard	discard	discard	discard	discard	discard

Transect	186	187	188	189	190	191	192
predicted recession by 2025							
predicted recession by 2050							
recession rate (ft/yr)	discard	discard	discard	discard	discard	discard	discard

Transect	193	194	195
predicted recession by 2025			
predicted recession by 2050			
recession rate (ft/yr)	discard	discard	discard

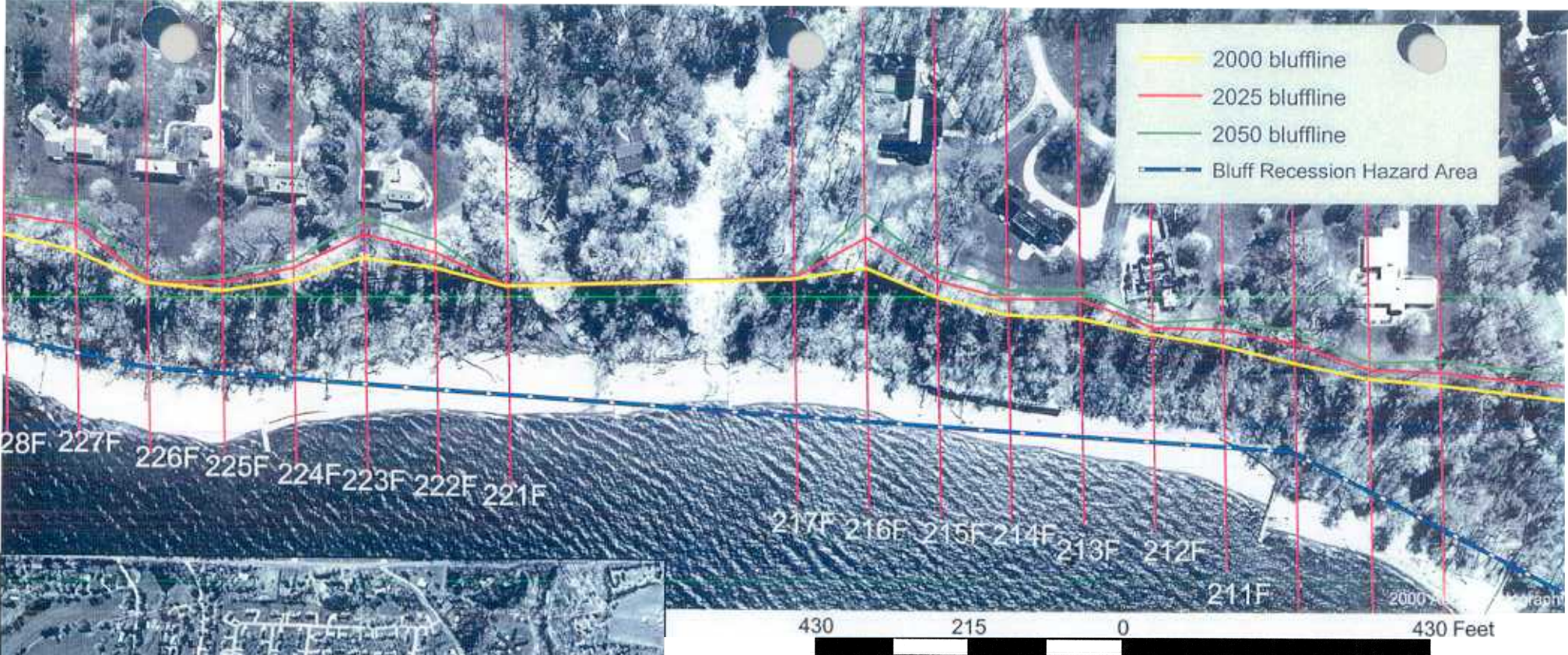
No measurable change in bluff location, but instability and/or signs of bluff recession were observed near transect, therefore this transect is in a Bluff Recession Hazard Area



Transect	196	197	198	199	200	201	202
predicted recession by 2025						17.5	16.1
predicted recession by 2050						28.5	25.6
recession rate (ft/yr)	discard	discard	discard	discard	discard	0.4	0.4

Transect	203	204	205	206	207	208	209
predicted recession by 2025	18.6	14.1	21.3			20.0	14.4
predicted recession by 2050	30.6	21.6	36.0			33.6	22.2
recession rate (ft/yr)	0.5	0.3	0.6	discard	discard	0.5	0.3

Transect	210	211	212	213	214
predicted recession by 2025	25.7	22.1	11.7	23.8	20.6
predicted recession by 2050	44.9	37.7	16.9	40.2	34.1
recession rate (ft/yr)	0.8	0.6	0.2	0.7	0.5



Transect	215	216	217	218	219	220	221
predicted recession by 2025	22.5	41.2	0.0				0.0
predicted recession by 2050	38.5	74.9	0.0				0.0
recession rate (ft/yr)	0.6	1.3	0.0	discard	discard	discard	0.0

Transect	222	223	224	225	226	227
predicted recession by 2025	21.7	34.6	15.7	13.1	0.0	35.4
predicted recession by 2050	36.9	62.5	24.9	19.7	0.0	64.3
recession rate (ft/yr)	0.6	1.1	0.4	0.3	0.0	1.2

No measurable change in bluff location, but instability and/or signs of bluff recession were observed near transect, therefore this transect is in a Bluff Recession Hazard Area

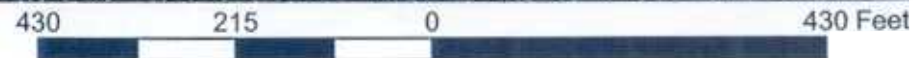


Transect	228	229	230	231	232	233	234
predicted recession by 2025	27.6	20.7	48.0	25.3	34.0	14.7	13.9
predicted recession by 2050	48.7	41.9	85.9	43.1	59.8	23.0	21.4
recession rate (ft/yr)	0.8	0.9	1.5	0.7	1.0	0.3	0.3

Transect	235	236	237	238	239	240	241
predicted recession by 2025	0.0			0.0	0.0		0.0
predicted recession by 2050	0.0			0.0	0.0		0.0
recession rate (ft/yr)	0.0	discard	discard	0.0	0.0	discard	0.0

Transect	242	243	244	245	246	247	248
predicted recession by 2025	0.0	0.0	0.0	0.0	16.1	11.4	17.0
predicted recession by 2050	0.0	0.0	0.0	0.0	25.6	16.3	27.6
recession rate (ft/yr)	0.0	0.0	0.0	0.0	0.4	0.2	0.4

**Yellow** No measurable change in bluff location, but instability and/or signs of bluff recession were observed near transect, therefore this transect is in a Bluff Recession Hazard Area



Transect	249	250	251	252	253	254	255
predicted recession by 2025	16.5	28.7	14.5	19.9			
predicted recession by 2050	26.4	50.9	23.0	32.6			
recession rate (ft/yr)	0.4	0.9	0.3	0.5	discard	discard	discard

Transect	256	257	258	259	260	261	262
predicted recession by 2025	0.0		24.7	20.8	19.6	23.4	0.0
predicted recession by 2050	0.0		43.0	35.2	32.7	40.4	0.0
recession rate (ft/yr)	0.0	discard	0.7	0.6	0.5	0.7	0.0

Transect	263	264	265	266	267	268	269
predicted recession by 2025			0.0	29.7		16.7	12.0
predicted recession by 2050			0.0	53.0		26.9	17.5
recession rate (ft/yr)	discard	discard	0.0	0.9	discard	0.4	0.2

No measurable change in bluff location, but instability and/or signs of bluff recession were observed near transect, therefore this transect is in a Bluff Recession Hazard Area