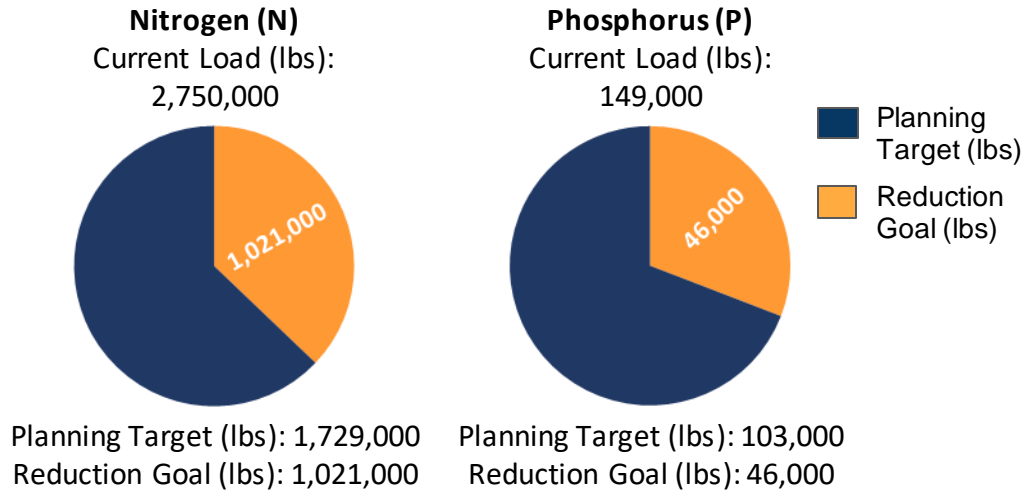


# Union County, Pennsylvania

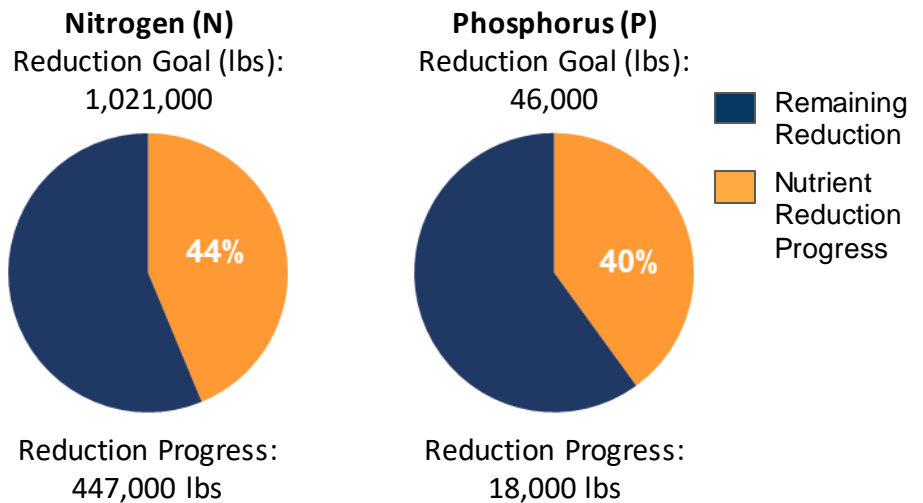
## Current Conditions

Union County is one of 34 counties in Pennsylvania's Chesapeake Bay Watershed that have developed Countywide Action Plans. Current loading rates are 2.75M lbs of nitrogen and 149K lbs of phosphorus annually. By 2025 Union County needs to reduce 1.02M lbs of nitrogen and 46K lbs of phosphorus.



## Pollutant Reduction Progress

By 2025, Union County needs to reduce 1.02M lbs of nitrogen and 46K lbs of phosphorus. Union County has developed a plan to reduce 447K lbs of nitrogen, which is 44% of the goal and 18K lbs of phosphorus, which is 40% of the goal.

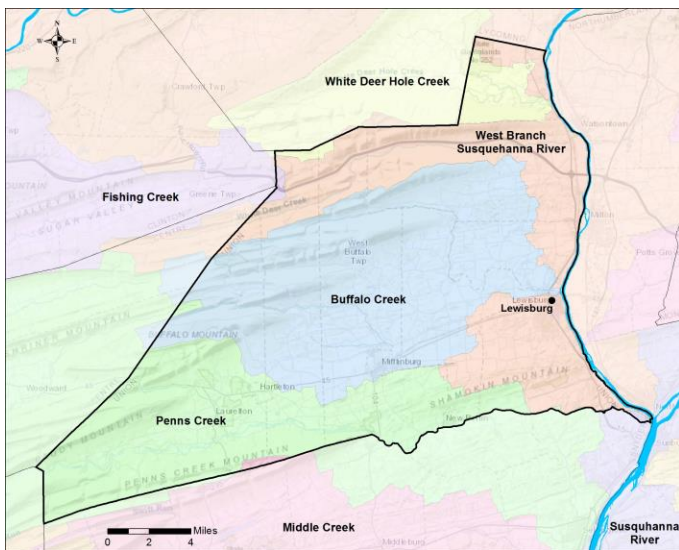


## Sector Reductions

Union County has identified reductions within two sectors within their planning template: agriculture and natural. Projected land use changes and population changes results in increases within three sectors: developed, septic, and wastewater. Union County has identified practices that result in total reductions of 447K lbs of nitrogen and 18K lbs of phosphorus.

Sector	Nitrogen (lbs.)	Phosphorus (lbs.)
Agriculture	-450,000	-15,000
Developed	+4,000	+400
Natural	-19,000	-5,000
Septic	+1,000	-
Wastewater	+17,000	+1,000
<b>Total Reductions</b>	<b>-447,000</b>	<b>-18,000</b>

# Union County Watershed Map



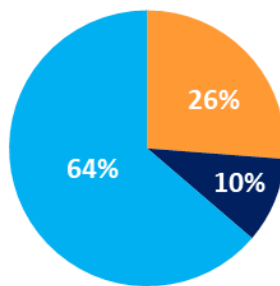
## Information About the Watersheds

Union County contains 6 major watersheds: Buffalo Creek, Fishing Creek, Middle Creek, Penns Creek, White Deer Hole Creek, and West Branch Susquehanna River. Watersheds in Union County have elevated levels of nitrogen, phosphorus, and sediment. Of the 611 total stream miles in Union County, approximately 19% have degraded aquatic communities due to causes such as disturbance, siltation (excessive sediment), metals, nutrient pollution and others.

## County Land Use:

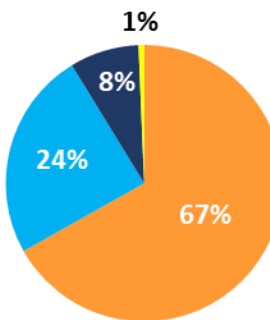
Union County has a total acreage of 203,376 acres in the Bay watershed. Agricultural land represents 26% of the total land with 53,354 total acres. Developed land represents another 10% of the total land in Union County. Natural land, which is made up of forests, stream, and wetlands, represents the remaining 65% of the land in Union County. Cropland makes up a majority of the Agriculture sector with 35,658 acres. The developed sector is almost all Non- Municipal Separate Storm Sewer Systems (MS4s) (99.9%) 20,385 acres with a very small portion of MS4s (0.01%) 53 acres.

**Union County:**  
Total Acres: 203,376



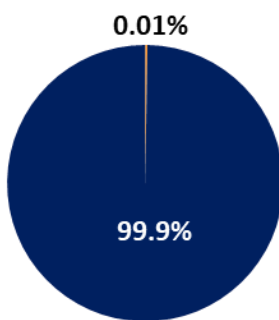
■ Agriculture  
■ Developed  
■ Natural

**Agriculture:**  
Total Acres: 53,354



■ Cropland  
■ Hay  
■ Pasture  
■ Other Ag

**Developed:**  
Total Acres: 20,438



■ MS4  
■ Non MS4

## Local Benefits:

Storm events are the number one way for nutrients and sediment to enter waterways. Increased runoff impacts: flooding, water quality, habitat, etc. Pollutants enter the waterways by two methods: overland runoff or leaching into groundwater.



Flooding affects safety, property, infrastructure, and economics.



Union County relies on local water sources to supply drinking water to its residents.



Just like humans, Union County's livestock depend on clean water.

## Learn more and Get Involved

To learn more about the Countywide Action Plans, visit DEPs Countywide Action Plans website: [www.dep.pa.gov/pacountywideactionplans.org](http://www.dep.pa.gov/pacountywideactionplans.org)

To learn more about how to get involved, go to the Join In website ([www.dep.pa.gov/joinpacap.org](http://www.dep.pa.gov/joinpacap.org)) to find a contact person for each county.

