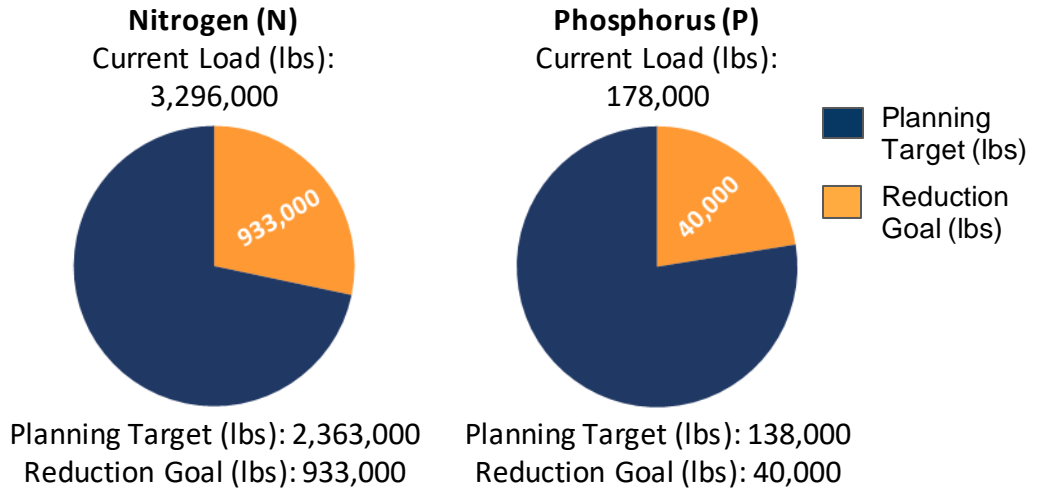


Schuylkill County, Pennsylvania

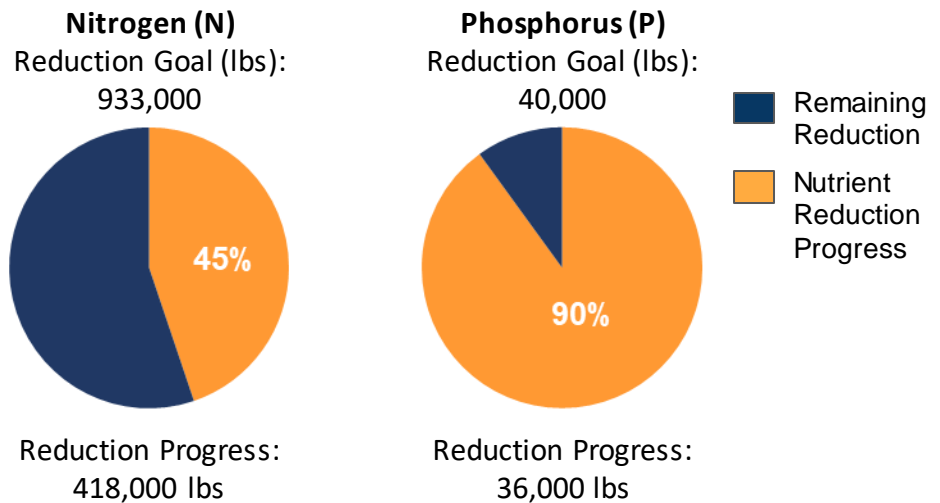
Current Conditions

Schuylkill County is one of 34 counties in Pennsylvania's Chesapeake Bay Watershed that have developed Countywide Action Plans. Current loading rates are 3.3M lbs of nitrogen and 178K lbs of phosphorus annually. By 2025 Schuylkill County needs to reduce 933K lbs of nitrogen and 40K lbs of phosphorus.



Pollutant Reduction Progress

By 2025, Schuylkill County needs to reduce 933K lbs of nitrogen and 40K lbs of phosphorus. Schuylkill County has developed a plan to reduce 418K lbs of nitrogen, which is 45% of the goal and 36K lbs of phosphorus, which is 90% of the goal.

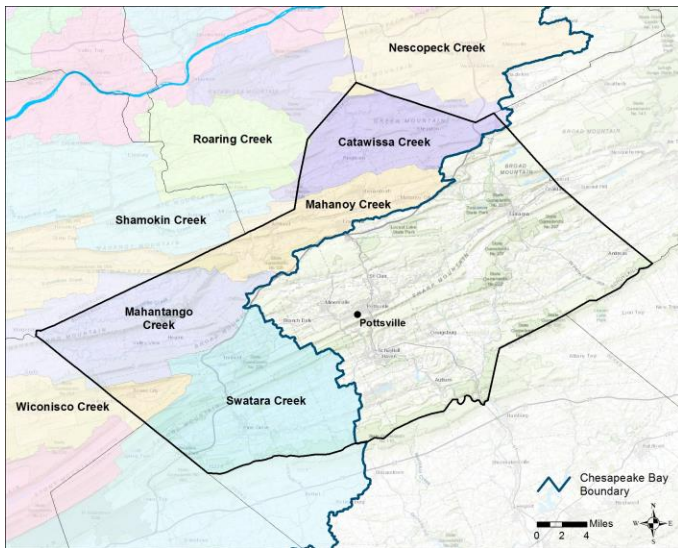


Sector Reductions

Schuylkill County has identified reductions within four sectors within their planning template: agriculture, developed, natural, and septic. Projected land use changes and population changes results in increases within the wastewater sector. Schuylkill County has identified practices that result in total reductions of 418K lbs of nitrogen and 36K lbs of phosphorus.

Sector	Nitrogen (lbs.)	Phosphorus (lbs.)
Agriculture	-427,000	-29,000
Developed	-14,000	-1,000
Natural	-15,000	-8,000
Septic	-2,000	-
Wastewater	+39,000	+2,000
Total Reductions	-418,000	-36,000

Schuylkill County Watershed Map



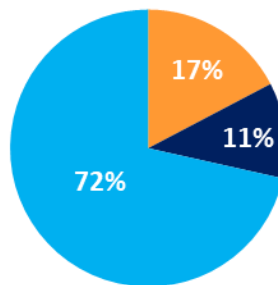
Information About the Watersheds

Schuylkill County contains 6 major watersheds: Catawissa Creek, Mahanoy Creek, Mahantango Creek, Nescopeck Creek, Swatara Creek, and Wiconisco Creek. Watersheds in Schuylkill County have elevated levels of nitrogen, phosphorus, and sediment. Of the 512 total stream miles in Schuylkill County, approximately 43% have degraded aquatic communities due to causes such as disturbance, siltation (excessive sediment), metals, nutrient pollution and others.

County Land Use:

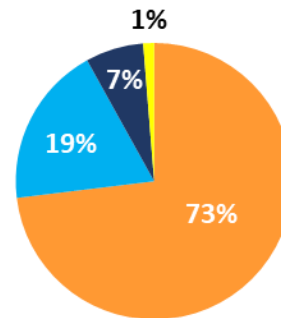
Schuylkill County has a total acreage of 256,394 acres in the Bay watershed. Agricultural land represents 17% of the total land with 44,443 total acres. Developed land represents another 11% of the total land in Schuylkill County. Natural land, which is made up of forests, stream, and wetlands, represents the remaining 72% of the land in Schuylkill County. Cropland makes up a majority of the Agriculture sector with 32,476 acres. The developed sector is mostly Non-Municipal Separate Storm Sewer Systems (MS4s) (97%) 27,888 acres with a very small portion of MS4s (3%) 722 acres.

Schuylkill County:
Total Acres: 256,394



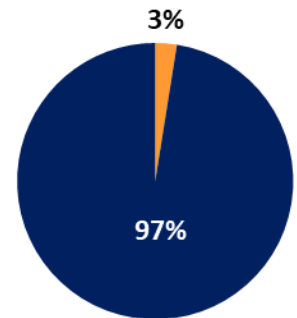
■ Agriculture
■ Developed
■ Natural

Agriculture:
Total Acres: 44,443



■ Cropland
■ Hay
■ Pasture
■ Other Ag

Developed:
Total Acres: 28,610



■ MS4
■ Non MS4

Local Benefits:

Storm events are the number one way for nutrients and sediment to enter waterways. Increased runoff impacts: flooding, water quality, habitat, etc. Pollutants enter the waterways by two methods: overland runoff or leaching into groundwater.



Flooding affects safety, property, infrastructure, and economics.



Schuylkill County relies on local water sources to supply drinking water to its residents.



Just like humans, Schuylkill County's livestock depend on clean water.

Learn more and Get Involved

To learn more about the Countywide Action Plans, visit DEPs Countywide Action Plans website: www.dep.pa.gov/pacountywideactionplans.org

To learn more about how to get involved, go to the Join In website (www.dep.pa.gov/joinpacap.org) to find a contact person for each county.

