

Lebanon County No-Till Farmer to Farmer Network

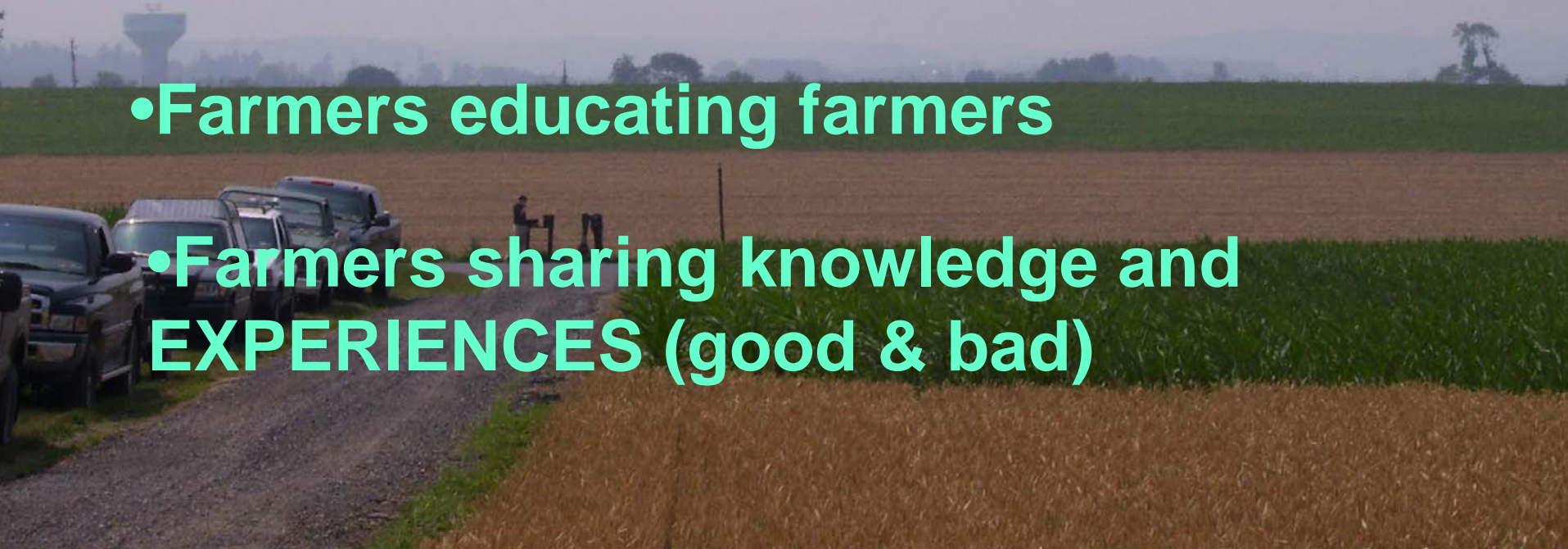
(No-Till Mentoring Program)



Mark Chegwidan – Lebanon County Conservation District

No-Till Network Goals

- Increase adoption and success of no-till through fostering a network of farmers
- Farmers educating farmers
- Farmers sharing knowledge and **EXPERIENCES** (good & bad)



Partners in the Network



- Knowledgeable / Progressive Farmers (9 “Advisors”)

- Farmers new to no-till farming

Partners in the Network



- Lebanon County Conservation District

Partners in the Network

PSU Extension



Praying for Rain??



Partners in the Network

NRCS



Partners in the Network

- Capital RC&D Area Council
- Chesapeake Bay Funders Network



**Core Group of
Farmers:
“NO-TILL
SLUGGERS”**



Advisors' Role

Offer Advice:

- Cover Crops
- Crop Rotation
- Seed Variety Selection
- PLANTER & DRILL SETUP
 - Proper Seed Depth
 - Dealing with Crop Residues
- Pesticides - Product Selection & Application
- Manure Application
- Avoidance & Remediation of Compaction
- Other questions that arise

Benefits To Advisors

- **Satisfaction of helping other farmers by sharing what they've learned**

- **Stipend to cover mileage and other expenses**

- **Learn more by teaching others**

- **Networking for Agri-Business**

- **Custom Planting**

- **Seed Dealers**

Challenges We Face

- Keeping all the programs straight; both the staff and the farmers get confused!
- Getting the ball rolling and finding the time to keep the momentum
- Record Keeping; documenting progress & tracking advising farmers' time and number of farmers they've helped
- Training advisors – different definitions of no-till, etc.