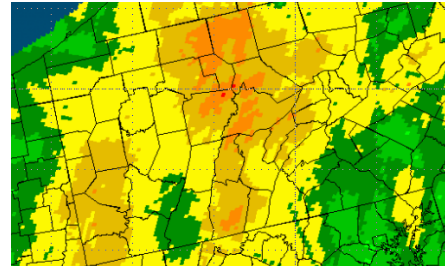


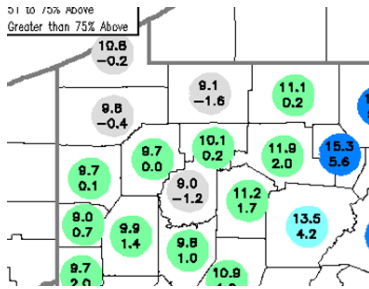
Weekly Drought Report December 7, 2010

Precipitation

Over the past 7 days, Pennsylvania received between 1 and 5 inches of precipitation with the greatest depths in two areas –in the central and southwest as shown in the graphic.



7 day precipitation 1



90 day precip departures 1

All 90-day precipitation departures are positive, indicating normal or above normal precipitation except for three counties – Erie, Crawford and Clarion.

All county 90- day precipitation indicators are green indicating normal or above conditions.

Surface Water

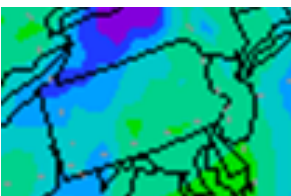
A review of instantaneous streamflows indicates that flows are now nearly 100 percent above normal across the state. Even though instantaneous flows are decreasing at this time; the rate of decline is less severe when compared to the conditions experienced in early to mid November and it appears that they will return to at or somewhat below normal. It appears that some streams may begin to freeze and gages will also begin to be affected by cold weather, therefore any significant flow changes without rainfall will have to be reviewed carefully.

The 30-day moving average streamflow values have improved since last week and all gages are now reporting 30-day averages in the Normal range. Greene, Philadelphia and Washington Counties have now returned to Normal Status. Nearly all 30-day flows are above normal with the exception with Greene County which is near the Watch line and movement into Watch status is likely within the week if no significant rainfall occurs.

Groundwater

All monitoring well indicators remain as “Normal” except Fayette County’s. Lawrence County’s well who also shows a watch and declining depths is being investigated by the USGS for possible error.

Precipitation forecast



Precipitation 12/15 -12/23 1

Forecasts are calling for between ½ to 2.5 inches in cumulative precipitation over the next 7 days with more amounts up to 1.5 inches between December 15 and December 23.

Summary

Almost all of the drought monitoring indicators have returned to normal and recovery from the drought appears to be sustained at this time. The most recent improvement occurred in the western half of the state, which received either above normal or normal precipitation for the month of November and eliminated the precipitation deficits that had persisted into early to mid November.

Conditions will be assessed early next week and it is likely the drought watch declaration can be removed following consultation with the Drought Task Force, which will be meeting on either Dec. 15 or 16, 2010.