



Use
PAONESTOP
 to quickly
 generate farm planning and
 management maps. Update
 maps as needed easily through
 a secure online interface



What is PAONESTOP? The Nutrient Management Mapping Module

PAONESTOP provides online tools to help farmers meet regulatory requirements for Conservation and Nutrient Management Planning. Development of PAONESTOP is ongoing and will be released to the public incrementally.

The first module of PAONESTOP is a Nutrient Management Mapping Module. This module provides a tool to extract data and generate high-quality maps that are required for completion of Nutrient Balance Sheets and Nutrient Management Plans. This module is available for use at www.paoonestop.org.

The second module within PAONESTOP, and currently under development, will provide tools to assist farmers in developing Conservation Plans to meet regulatory requirements, reduce soil loss, and protect the water quality.

Why Do We Need PAONESTOP Mapping?

- There is a clear need for a simple tool for farmers to create farm planning maps easily and inexpensively; the PAONESTOP Nutrient Management Planning Mapping Module provides this tool through a simple, online interface.
- PA Nutrient Management regulations require that farmers develop Nutrient Management Plans and complete Nutrient Balance Sheets for manure transfers to protect water quality.
- PA State Conservation Commission estimates that more than 50,000 nutrient balance sheets are completed annually in Pennsylvania.
- Methods to develop Nutrient Management Plans and Balance Sheets are available to farmers but require farm planning maps as part of the process. Maps can be a challenge to produce and are expected to contain features such as field boundaries, acreages, stream and water features, wells, sinkholes, application setbacks and buffers, soils, aerial images and more.

Benefits & Features

- » Generate high-quality maps on aerial imagery.
- » No specialized software needed.
- » Farm information can be saved online for future edits and usage.
- » Farm only needs to be drawn once.
- » Field acreages automatically calculated.
- » Helps meet regulatory requirements designed to protect PA water resources.
- » Easy production of high-quality farm maps.
- » Air photo and topographic imagery provided.
- » Digital or hardcopy maps produced.
- » Individual farm information secured.
- » Extract NRCS soils data for individual fields.



Using PAONESTOP Is Easy!

Who Can Access Farm Information

PAONESTOP is maintained by Penn State University Cooperative Extension and information related to any individual farm will not be shared with or distributed to any other organization without permission of the individual farmer.

Who is Developing PAONESTOP?

PAONESTOP is being developed by Penn State Cooperative Extension in collaboration with and support from:

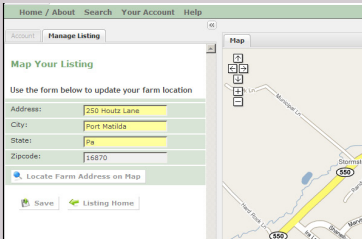
- » PA State Conservation Commission
- » PA Department of Agriculture
- » PA Department of Environmental Protection
- » USDA Natural Resources Conservation Services
- » National Consortium for Rural Geospatial Innovations in America



Use PAONESTOP to quickly generate farm planning & management maps.

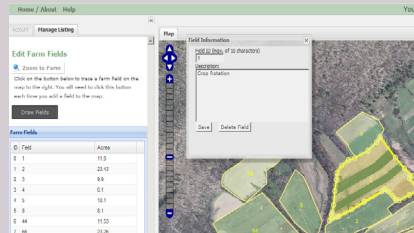
Update maps easily through a secure online interface

1. Create Login



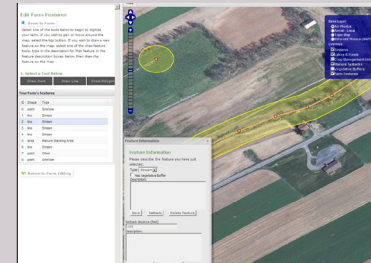
- Login to PAOneStop.org and establish an account with username and password.
- Locate farm using address and Google maps
- Develop maps for as many farms as you wish!

2. Locate Farm, 3. Draw & Label Fields



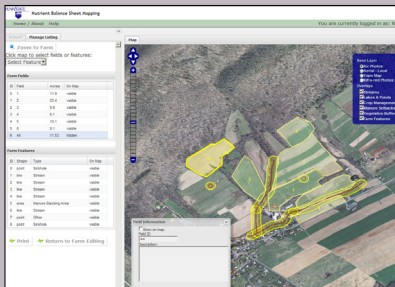
- Outline field boundaries, assign field identification number
- Describe fields
- Calculate acreages automatically
- Edit, add or delete fields as needed
- Aerial photography provided for your farm.

4. Draw Farm Features



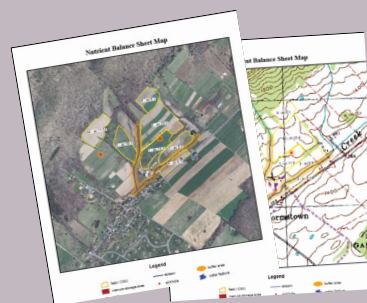
- Draw other farm features needed for map (water wells, sinkholes, streams, manure staging areas).
- Generate manure setback areas & stream buffers.

5. Select Fields to Map



- Select features to appear on map. Only impacted fields need to be mapped.
- Hide any field or feature not needed for map.
- Select map background (aerial photograph or topography).

6. Create Digital or Hard Copy Maps



- Generate maps that are acceptable for PA Nutrient Balance Sheet submission
- Save maps and data securely online for future reference & mapping.
- Only need to draw fields and farm features once - all data are saved in a secure database that you can access at any time using your login.



6 Easy Steps ...

PAONESTOP

Penn State Cooperative Extension, Geospatial Technology Program
 Visit us online! <http://lal.cas.psu.edu>
 Contact: Rick Day rday@psu.edu * ph 877.722.4724

www.paonestop.org