

UPPER ALLEN TOWNSHIP

STORMWATER UPDATES

EXPLANATION OF ORDINANCE 762 ADOPTED ON JANUARY 18, 2017

These new regulations are established directly from DEP, and the Township must modify the ordinance regulations to stay in compliance with their permit.

Why Did We Make These Changes?

The Township updated its Stormwater and Illicit Discharge Ordinances to reflect new requirements with regards to stormwater management and our MS4 permit.

Upper Allen Township voted to amend §213-5.B(1) Prohibition of illegal discharges and §214-38.A(6) Prohibited discharges on January 18, 2017. The washing of vehicles with cleaning agents and discharge of non-chlorinated pool water will no longer be permitted to enter into stormwater facilities.

For both swimming pool water and residential car wash discharges, the issue is primarily one of scale. Any single uncontrolled swimming pool draining or a resident's car wash activity might be considered minor

with respect to its contribution of pollutant loading to the Storm Sewer System and downstream surface waters. However, if you were to apply these to the scale of an entire urbanized area, pollutant loadings can be significant.

Upper Allen Township is permitted through the U.S. Environmental Protection Agency (EPA) and the Pennsylvania Department of Environmental Protection (DEP) Program referred to as the Municipal Separate Storm Sewer System (MS4). This program issues permits to municipalities for the discharge of stormwater into the creeks, streams, rivers and ultimately the already polluted Chesapeake Bay.

PLEASE NOTE:

DEP DOES NOT EXPECT TOWNSHIPS TO "POLICE" RESIDENTIAL NEIGHBORHOODS TO ASSURE THAT RESIDENTIAL CAR WASH WATER CONTAINING CLEANING AGENTS AND NON-CHLORINATED POOL WATER IS NOT FLOWING INTO STORM SEWERS.



At this time, updating the ordinance, publicizing the ordinance update and providing consistent education to the public is all that is expected.

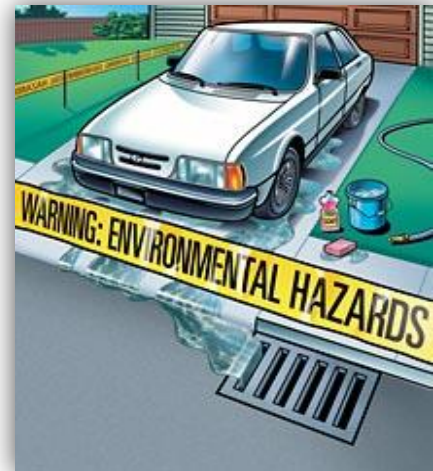
IF YOU CHOOSE TO WASH YOUR CAR AT HOME, HERE ARE A FEW TIPS:

1. Wash on grass, gravel, not on a paved driveway or street.
2. Minimize the amount of water you use by using a hose nozzle with a trigger.
3. Reduce the amount of soap you use.
4. Do not rinse sponges and wash rags onto the ground but into buckets, then pour the buckets of soapy water down the sink or on grass when done.

Residential Car Washing:

What Has Changed?

The Ordinance authorizes the discharge of water resulting from residential (not commercial) car washing to the MS4 *only* when cleaning agents are not utilized. The definition of “*cleaning agent*” is listed as, “*any product, substance or chemical other than water that is used to clean the exterior surface of vehicles.*”



What Does This Mean?

Consequently, residential vehicle washing with cleaning agents is acceptable where the wash water would not flow into storm sewers. Residential vehicle washing without cleaning agents is also acceptable, even if the wash water enters storm sewers.

Pool Water Discharges:

What Has Changed?

The Ordinance also removed dechlorinated swimming pool discharges from the list of authorized non-stormwater discharges.



What Does This Mean?

Discharges of non-chlorinated swimming pool water directly to the storm sewer system, and ultimately to local streams, are no longer authorized by the ordinance.

If the water cannot be disposed of by draining in your yard, you may need to hire a contractor to pump your pool into a water truck and dispose of it properly offsite. Check the yellow pages or internet for pool companies or septic disposal companies for this service.

PLEASE NOTE:

DISCHARGING CHLORINATED SWIMMING POOL WATER IS NOT PERMITTED PER STORMWATER MANAGEMENT ORDINANCE, CHAPTER 214, ADOPTED IN 2011.



IF POOL WATER CANNOT BE HAULED AWAY AND YOU MUST DRAIN YOUR POOL, FOLLOW THE TIPS LISTED BELOW:

1. Prior to draining, shut off the chlorination system or do not add any chlorine.
2. Hold the water in the pool or hot tub for two weeks to reduce chlorine level.
3. Drain water onto a landscaped area of your property away from your storm drains.
4. When draining be considerate of your neighbor by keeping all water on your property.
5. Use sand bags or berms, if necessary, to keep water from leaving your property.
6. Do not drain if there has been recent application of herbicides, pesticides or fertilizers on your lawn.