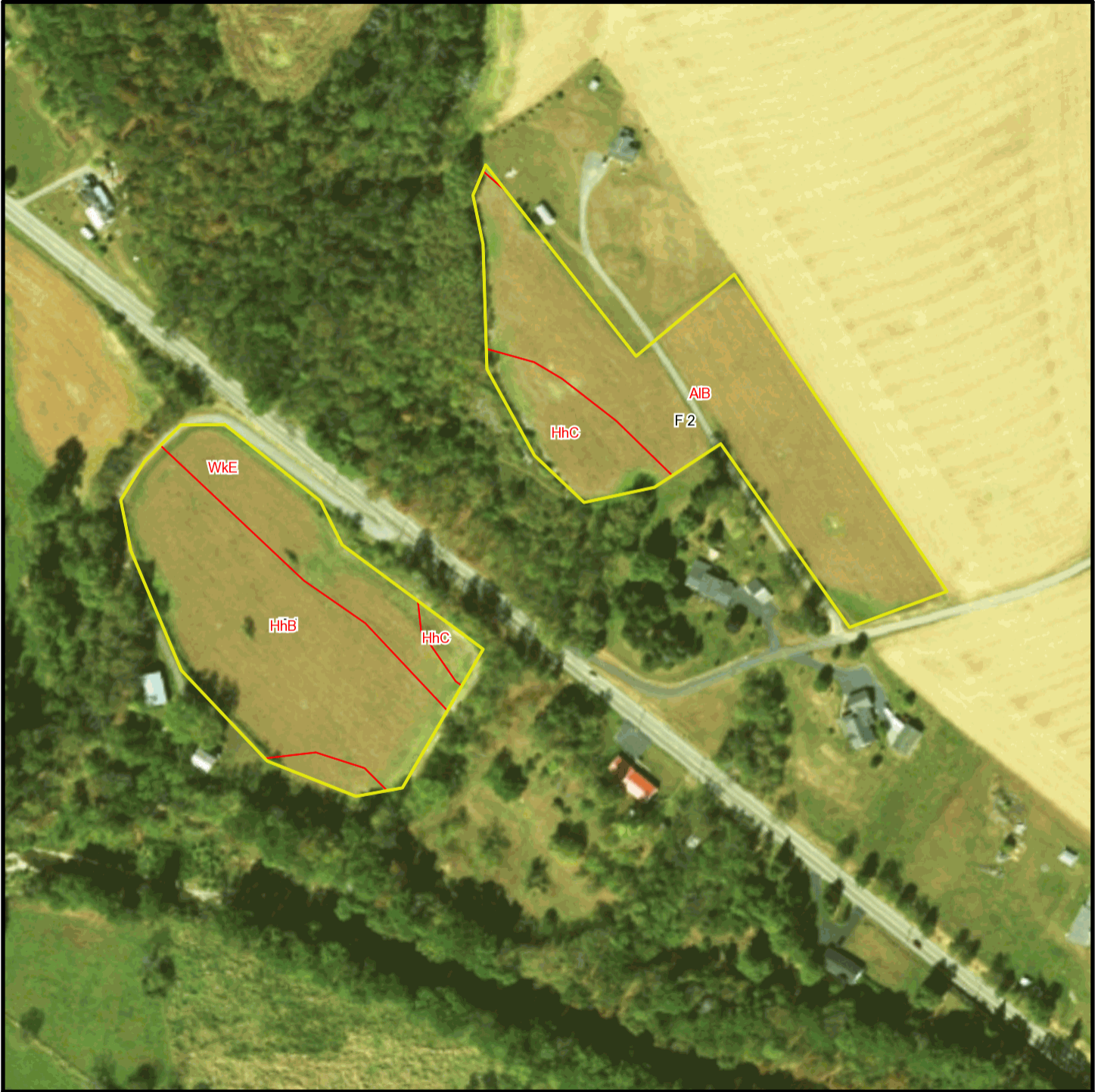
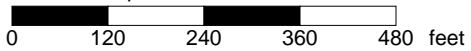


# Vandine T 447 Soil Map



\* 240.0 feet per inch



## Soil Acreages By Field

Field	Label	Musym	Muname	Comp	%	Acres	Drainage Class	Farmland Class	Tfact	Kfact
F 1	F 1	HhB	Hartleton channery silt loam, 3 to 8 percent slopes	Hartleton	75	3.2	Well drained	Farmland of statewide importance	3	0.24
F 1	F 1	HhC	Hartleton channery silt loam, 8 to 15 percent slopes	Hartleton	90	0.15	Well drained	Farmland of statewide importance	3	0.24
F 1	F 1	WkE	Weikert and Klinesville shaly silt loams, 25 to 80 percent slopes	Weikert	55	0.86	Somewhat excessively drained	Not prime farmland	2	0.32
F 1	F 1	WkE	Weikert and Klinesville shaly silt loams, 25 to 80 percent slopes	Klinesville	35	0.55	Somewhat excessively drained	Not prime farmland	2	0.28
F 2	F 2	AIB	Allenwood gravelly silt loam, 3 to 8 percent slopes	Allenwood	100	3.99	Well drained	All areas are prime farmland	4	0.32
F 2	F 2	HhC	Hartleton channery silt loam, 8 to 15 percent slopes	Hartleton	90	0.82	Well drained	Farmland of statewide importance	3	0.24

## Soil Acreages For Farm

Musym	Muname	Comp	%	Acres	Drainage Class	Farmland Class	Tfact	Kfact
HhB	Hartleton channery silt loam, 3 to 8 percent slopes	Hartleton	75	3.2	Well drained	Farmland of statewide importance	3	0.24
HhC	Hartleton channery silt loam, 8 to 15 percent slopes	Hartleton	90	0.97	Well drained	Farmland of statewide importance	3	0.24
WkE	Weikert and Klinesville shaly silt loams, 25 to 80 percent slopes	Weikert	55	0.86	Somewhat excessively drained	Not prime farmland	2	0.32
WkE	Weikert and Klinesville shaly silt loams, 25 to 80 percent slopes	Klinesville	35	0.55	Somewhat excessively drained	Not prime farmland	2	0.28

Musym	Muname	Comp	%	Acres	Drainage Class	Farmland Class	Tfact	Kfact
AIB	Allenwood gravelly silt loam, 3 to 8 percent slopes	Allenwood	100	3.99	Well drained	All areas are prime farmland	4	0.32