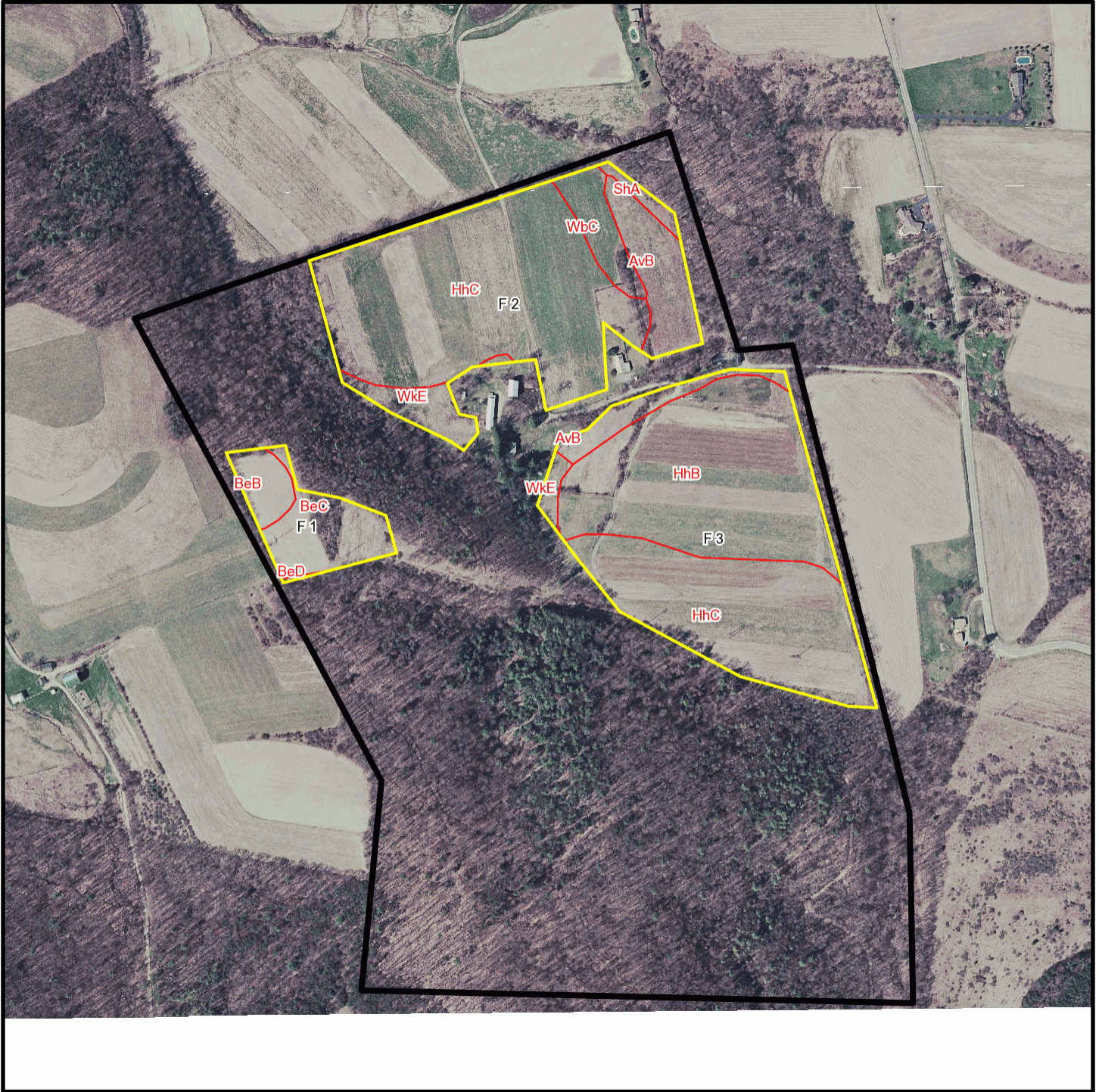
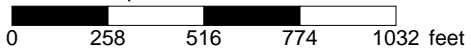


# T 1254



\* 516.0 feet per inch



## Soil Acreages By Field

Field	Label	Musym	Muname	Acres	Drainage Class	Farmland Class	Kfact
F 1	F 1	BeB	Berks channery silt loam, 3 to 8 percent slopes	0.98	Well drained	Farmland of statewide importance	0.32
F 1	F 1	BeC	Berks channery silt loam, 8 to 15 percent slopes	2.37	Well drained	Farmland of statewide importance	0.32
F 1	F 1	BeD	Berks channery silt loam, 15 to 25 percent slopes	0.03	Well drained	Not prime farmland	0.32
F 2	F 2	AvB	Alvira silt loam, 3 to 8 percent slopes	2.29	Somewhat poorly drained	Farmland of statewide importance	0.32
F 2	F 2	HhC	Hartleton channery silt loam, 8 to 15 percent slopes	13.65	Well drained	Farmland of statewide importance	0.24
F 2	F 2	ShA	Shelmadine silt loam, 0 to 3 percent slopes	0.36	Poorly drained	Not prime farmland	0.32
F 2	F 2	WbC	Watson silt loam, 8 to 15 percent slopes	1.36	Moderately well drained	Farmland of statewide importance	0.37
F 2	F 2	WkE	Weikert and Klinesville shaly silt loams, 25 to 80 percent slopes	2.48	Somewhat excessively drained	Not prime farmland	0.32
F 3	F 3	AvB	Alvira silt loam, 3 to 8 percent slopes	1.1	Somewhat poorly drained	Farmland of statewide importance	0.32
F 3	F 3	HhB	Hartleton channery silt loam, 3 to 8 percent slopes	10.5	Well drained	Farmland of statewide importance	0.24
F 3	F 3	HhC	Hartleton channery silt loam, 8 to 15 percent slopes	8.3	Well drained	Farmland of statewide importance	0.24
F 3	F 3	WkE	Weikert and Klinesville shaly silt loams, 25 to 80 percent slopes	0.68	Somewhat excessively drained	Not prime farmland	0.32

## Soil Acreages For Farm

MUSYM	MUNAME	Drainage Class	Farmland Class	kfact	acres
AvB	Alvira silt loam, 3 to 8 percent slopes	Somewhat poorly drained	Farmland of statewide importance	0.32	3.39
BeB	Berks channery silt loam, 3 to 8 percent slopes	Well drained	Farmland of statewide importance	0.32	0.98
BeC	Berks channery silt loam, 8 to 15 percent slopes	Well drained	Farmland of statewide importance	0.32	2.37

MUSYM	MUNAME	Drainage Class	Farmland Class	kfact	acres
BeD	Berks channery silt loam, 15 to 25 percent slopes	Well drained	Not prime farmland	0.32	0.03
HhB	Hartleton channery silt loam, 3 to 8 percent slopes	Well drained	Farmland of statewide importance	0.24	10.5
HhC	Hartleton channery silt loam, 8 to 15 percent slopes	Well drained	Farmland of statewide importance	0.24	21.95
ShA	Shelmadine silt loam, 0 to 3 percent slopes	Poorly drained	Not prime farmland	0.32	0.36
WbC	Watson silt loam, 8 to 15 percent slopes	Moderately well drained	Farmland of statewide importance	0.37	1.36
WkE	Weikert and Klinesville shaly silt loams, 25 to 80 percent slopes	Somewhat excessively drained	Not prime farmland	0.28	1.58
WkE	Weikert and Klinesville shaly silt loams, 25 to 80 percent slopes	Somewhat excessively drained	Not prime farmland	0.32	1.58