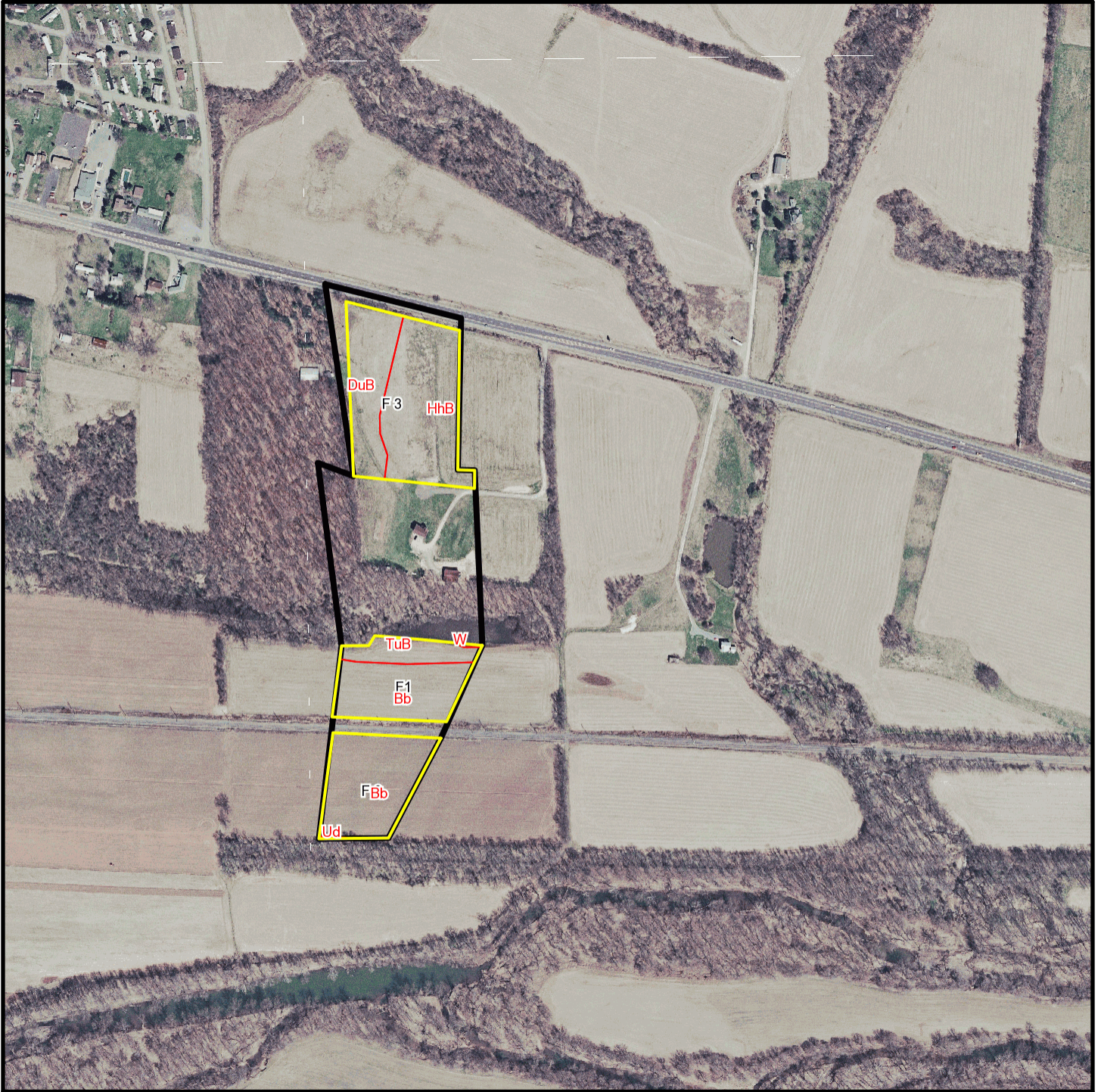
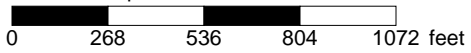


JRT Farms T 3746



* 536.0 feet per inch



Soil Acreages By Field

Field	Label	Musym	Muname	Acres	Drainage Class	Farmland Class	Kfact
F 2	F 2	Bb	Barbour fine sandy loam, occasionally flooded	2.87	Well drained	All areas are prime farmland	0.32
F 2	F 2	Ud	Udifluvents, loamy	0.02	Moderately well drained	Not prime farmland	0.49
F 3	F 3	DuB	Duncannon loam, 3 to 8 percent slopes	2.07	Well drained	All areas are prime farmland	0.37
F 3	F 3	HhB	Hartleton channery silt loam, 3 to 8 percent slopes	3.64	Well drained	Farmland of statewide importance	0.24
F1	F1	Bb	Barbour fine sandy loam, occasionally flooded	2.22	Well drained	All areas are prime farmland	0.32
F1	F1	TuB	Tunkhannock gravelly loam, 3 to 8 percent slopes	0.9	Well drained	All areas are prime farmland	0.28
F1	F1	W	Water	0.02		Not prime farmland	NA

Soil Acreages For Farm

MUSYM	MUNAME	Drainage Class	Farmland Class	kfact	acres
Bb	Barbour fine sandy loam, occasionally flooded	Well drained	All areas are prime farmland	0.32	5.09
DuB	Duncannon loam, 3 to 8 percent slopes	Well drained	All areas are prime farmland	0.37	2.07
HhB	Hartleton channery silt loam, 3 to 8 percent slopes	Well drained	Farmland of statewide importance	0.24	3.64
TuB	Tunkhannock gravelly loam, 3 to 8 percent slopes	Well drained	All areas are prime farmland	0.28	0.9
Ud	Udifluvents, loamy	Moderately well drained	Not prime farmland	0.49	0.02
W	Water		Not prime farmland		0.02