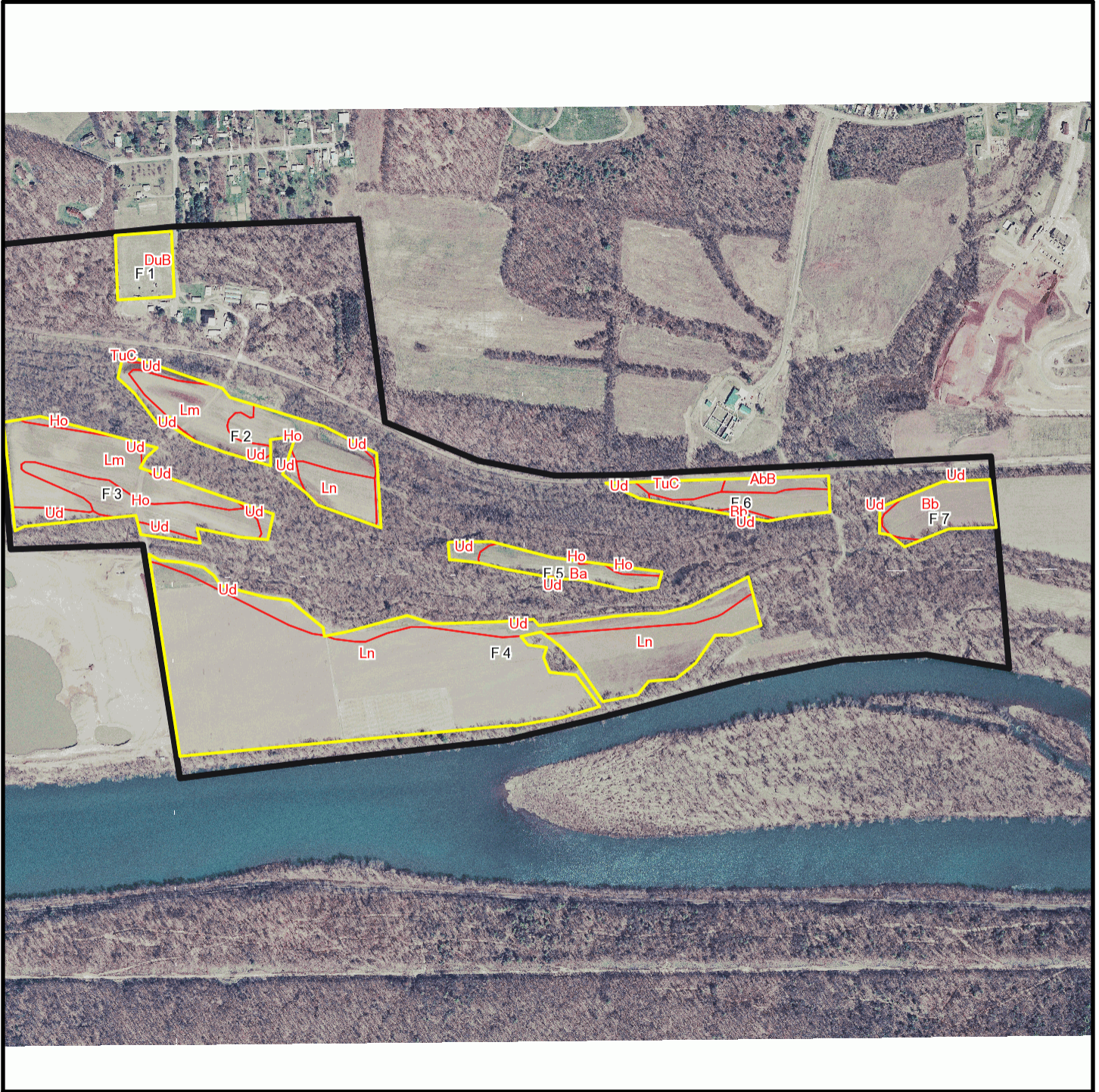
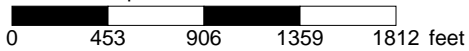


JRT Farms T 2810



* 906.0 feet per inch



Soil Acreages By Field

Field	Label	Musym	Muname	Acres	Drainage Class	Farmland Class	Kfact
F 1	F 1	DuB	Duncannon loam, 3 to 8 percent slopes	3.29	Well drained	All areas are prime farmland	0.37
F 2	F 2	Ho	Holly silt loam	4.24	Very poorly drained	Not prime farmland	0.28
F 2	F 2	Lm	Linden loam	4.78	Well drained	All areas are prime farmland	0.37
F 2	F 2	Ln	Linden loam, occasionally flooded	2.77	Well drained	All areas are prime farmland	0.37
F 2	F 2	TuC	Tunkhannock gravelly loam, 8 to 15 percent slopes	0.07	Well drained	Farmland of statewide importance	0.28
F 2	F 2	Ud	Udifluents, loamy	1.86	Moderately well drained	Not prime farmland	0.49
F 3	F 3	Ho	Holly silt loam	5.56	Very poorly drained	Not prime farmland	0.28
F 3	F 3	Lm	Linden loam	8.97	Well drained	All areas are prime farmland	0.37
F 3	F 3	Ud	Udifluents, loamy	2.16	Moderately well drained	Not prime farmland	0.49
F 4	F 4	Ln	Linden loam, occasionally flooded	49.98	Well drained	All areas are prime farmland	0.37
F 4	F 4	Ud	Udifluents, loamy	6.84	Moderately well drained	Not prime farmland	0.49
F 5	F 5	Ba	Barbour fine sandy loam	3.02	Well drained	All areas are prime farmland	0.32
F 5	F 5	Ho	Holly silt loam	0.31	Very poorly drained	Not prime farmland	0.28
F 5	F 5	Ud	Udifluents, loamy	0.61	Moderately well drained	Not prime farmland	0.49
F 6	F 6	AbB	Albrights silt loam, 3 to 8 percent slopes	1.27	Moderately well drained	All areas are prime farmland	0.43
F 6	F 6	Bb	Barbour fine sandy loam, occasionally flooded	2.8	Well drained	All areas are prime farmland	0.32
F 6	F 6	TuC	Tunkhannock gravelly loam, 8 to 15 percent slopes	1.18	Well drained	Farmland of statewide importance	0.28
F 6	F 6	Ud	Udifluents, loamy	0.59	Moderately well drained	Not prime farmland	0.49
F 7	F 7	Bb	Barbour fine sandy loam, occasionally flooded	4.33	Well drained	All areas are prime farmland	0.32
F 7	F 7	Ud	Udifluents, loamy	0.31	Moderately well drained	Not prime farmland	0.49

Soil Acreages For Farm

MUSYM	MUNAME	Drainage Class	Farmland Class	kfact	acres
AbB	Albrights silt loam, 3 to 8 percent slopes	Moderately well drained	All areas are prime farmland	0.43	1.27
Ba	Barbour fine sandy loam	Well drained	All areas are prime farmland	0.32	3.02
Bb	Barbour fine sandy loam, occasionally flooded	Well drained	All areas are prime farmland	0.32	7.13
DuB	Duncannon loam, 3 to 8 percent slopes	Well drained	All areas are prime farmland	0.37	3.29
Ho	Holly silt loam	Very poorly drained	Not prime farmland	0.28	10.11
Lm	Linden loam	Well drained	All areas are prime farmland	0.37	13.75
Ln	Linden loam, occasionally flooded	Well drained	All areas are prime farmland	0.37	52.75
TuC	Tunkhannock gravelly loam, 8 to 15 percent slopes	Well drained	Farmland of statewide importance	0.28	1.25
Ud	Udifluvents, loamy	Moderately well drained	Not prime farmland	0.49	12.37