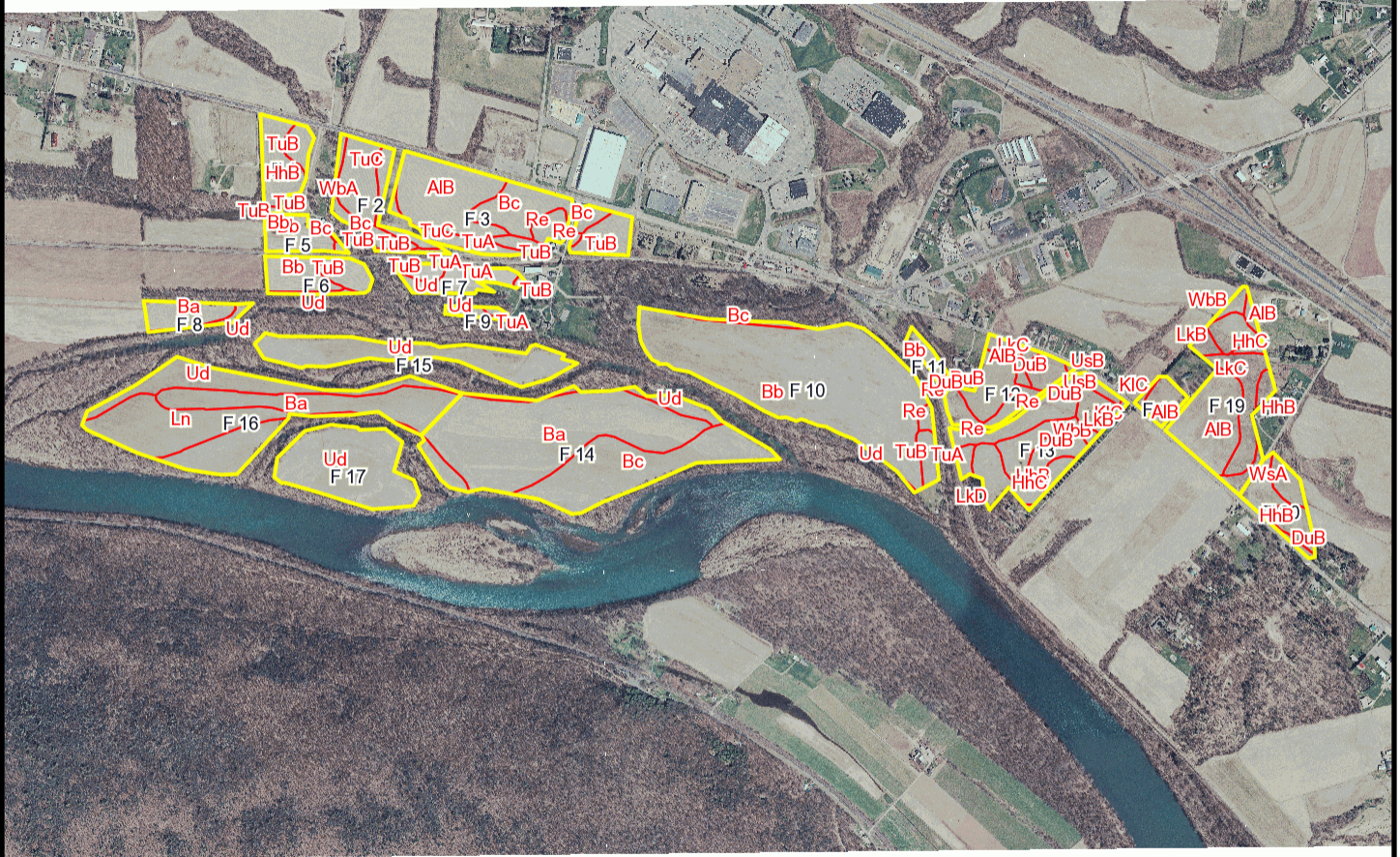
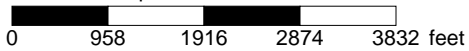


T 2748 Soil Map



* 1916.0 feet per inch



Soil Acreages By Field

Field	Label	Musym	Muname	Acres	Drainage Class	Farmland Class	Kfact
F 1	F 1	Bb	Barbour fine sandy loam, occasionally flooded	0.01	Well drained	All areas are prime farmland	0.32
F 1	F 1	HhB	Hartleton channery silt loam, 3 to 8 percent slopes	6.51	Well drained	Farmland of statewide importance	0.24
F 1	F 1	TuB	Tunkhannock gravelly loam, 3 to 8 percent slopes	2.51	Well drained	All areas are prime farmland	0.28
F 10	F 10	Bb	Barbour fine sandy loam, occasionally flooded	58.89	Well drained	All areas are prime farmland	0.32
F 10	F 10	Bc	Basher silt loam	0.93	Moderately well drained	All areas are prime farmland	0.32
F 10	F 10	Re	Rexford gravelly loam	0.86	Poorly drained	Farmland of statewide importance	0.24
F 10	F 10	TuB	Tunkhannock gravelly loam, 3 to 8 percent slopes	2.2	Well drained	All areas are prime farmland	0.28
F 10	F 10	Ud	Udifluents, loamy	0.11	Moderately well drained	Not prime farmland	0.49
F 11	F 11	Bb	Barbour fine sandy loam, occasionally flooded	1.88	Well drained	All areas are prime farmland	0.32
F 11	F 11	DuB	Duncannon loam, 3 to 8 percent slopes	0.02	Well drained	All areas are prime farmland	0.37
F 11	F 11	Re	Rexford gravelly loam	0.19	Poorly drained	Farmland of statewide importance	0.24
F 12	F 12	AIB	Allenwood gravelly silt loam, 3 to 8 percent slopes	2.22	Well drained	All areas are prime farmland	0.32
F 12	F 12	DuB	Duncannon loam, 3 to 8 percent slopes	8.31	Well drained	All areas are prime farmland	0.37
F 12	F 12	LkC	Leck kill channery silt loam, 8 to 15 percent slopes	0.49	Well drained	Farmland of statewide importance	0.32
F 12	F 12	Re	Rexford gravelly loam	4.2	Poorly drained	Farmland of statewide importance	0.24
F 12	F 12	UsB	Urban land-Udorhents complex, 0 to 8 percent slopes	0.15		Not prime farmland	0.32
F 13	F 13	DuB	Duncannon loam, 3 to 8 percent slopes	5.3	Well drained	All areas are prime farmland	0.37

Field	Label	Musym	Muname	Acres	Drainage Class	Farmland Class	Kfact
F 13	F 13	HhB	Hartleton channery silt loam, 3 to 8 percent slopes	1.36	Well drained	Farmland of statewide importance	0.24
F 13	F 13	HhC	Hartleton channery silt loam, 8 to 15 percent slopes	9.12	Well drained	Farmland of statewide importance	0.24
F 13	F 13	KIC	Klinesville shaly silt loam, 8 to 15 percent slopes	0.11	Somewhat excessively drained	Not prime farmland	0.28
F 13	F 13	LkB	Leck kill channery silt loam, 3 to 8 percent slopes	3.28	Well drained	All areas are prime farmland	0.32
F 13	F 13	LkD	Leck kill channery silt loam, 15 to 25 percent slopes	0.02	Well drained	Not prime farmland	0.32
F 13	F 13	Re	Rexford gravelly loam	6.53	Poorly drained	Farmland of statewide importance	0.24
F 13	F 13	TuA	Tunkhannock gravelly loam, 0 to 3 percent slopes	1.17	Well drained	All areas are prime farmland	0.28
F 13	F 13	UsB	Urban land-Udortheents complex, 0 to 8 percent slopes	1.22		Not prime farmland	0.32
F 13	F 13	WbB	Watson silt loam, 3 to 8 percent slopes	0.41	Moderately well drained	All areas are prime farmland	0.37
F 14	F 14	Ba	Barbour fine sandy loam	41.44	Well drained	All areas are prime farmland	0.32
F 14	F 14	Bc	Basher silt loam	22.22	Moderately well drained	All areas are prime farmland	0.32
F 14	F 14	Ud	Udifluents, loamy	5.49	Moderately well drained	Not prime farmland	0.49
F 15	F 15	Ud	Udifluents, loamy	17.96	Moderately well drained	Not prime farmland	0.49
F 16	F 16	Ba	Barbour fine sandy loam	15.71	Well drained	All areas are prime farmland	0.32
F 16	F 16	Ln	Linden loam, occasionally flooded	16.06	Well drained	All areas are prime farmland	0.37
F 16	F 16	Ud	Udifluents, loamy	19.9	Moderately well drained	Not prime farmland	0.49
F 17	F 17	Ud	Udifluents, loamy	20.75	Moderately well drained	Not prime farmland	0.49
F 18	F 18	AIB	Allenwood gravelly silt loam, 3 to 8 percent slopes	3.12	Well drained	All areas are prime farmland	0.32

Field	Label	Musym	Muname	Acres	Drainage Class	Farmland Class	Kfact
F 18	F 18	KIC	Klinesville shaly silt loam, 8 to 15 percent slopes	0.38	Somewhat excessively drained	Not prime farmland	0.28
F 19	F 19	AIB	Allenwood gravelly silt loam, 3 to 8 percent slopes	13.35	Well drained	All areas are prime farmland	0.32
F 19	F 19	HhB	Hartleton channery silt loam, 3 to 8 percent slopes	2.62	Well drained	Farmland of statewide importance	0.24
F 19	F 19	HhC	Hartleton channery silt loam, 8 to 15 percent slopes	3.21	Well drained	Farmland of statewide importance	0.24
F 19	F 19	LkB	Leck kill channery silt loam, 3 to 8 percent slopes	1.22	Well drained	All areas are prime farmland	0.32
F 19	F 19	LkC	Leck kill channery silt loam, 8 to 15 percent slopes	7.03	Well drained	Farmland of statewide importance	0.32
F 19	F 19	WbB	Watson silt loam, 3 to 8 percent slopes	1.16	Moderately well drained	All areas are prime farmland	0.37
F 2	F 2	Bc	Basher silt loam	3.4	Moderately well drained	All areas are prime farmland	0.32
F 2	F 2	TuA	Tunkhannock gravelly loam, 0 to 3 percent slopes	0.02	Well drained	All areas are prime farmland	0.28
F 2	F 2	TuB	Tunkhannock gravelly loam, 3 to 8 percent slopes	0.5	Well drained	All areas are prime farmland	0.28
F 2	F 2	TuC	Tunkhannock gravelly loam, 8 to 15 percent slopes	2.78	Well drained	Farmland of statewide importance	0.28
F 2	F 2	WbA	Watson silt loam, 0 to 3 percent slopes	7.02	Moderately well drained	All areas are prime farmland	0.37
F 3	F 3	AIB	Allenwood gravelly silt loam, 3 to 8 percent slopes	15.39	Well drained	All areas are prime farmland	0.32
F 3	F 3	Bc	Basher silt loam	7.52	Moderately well drained	All areas are prime farmland	0.32
F 3	F 3	Re	Rexford gravelly loam	2.36	Poorly drained	Farmland of statewide importance	0.24
F 3	F 3	TuA	Tunkhannock gravelly loam, 0 to 3 percent slopes	0.03	Well drained	All areas are prime farmland	0.28

Field	Label	Musym	Muname	Acres	Drainage Class	Farmland Class	Kfact
F 3	F 3	TuB	Tunkhannock gravelly loam, 3 to 8 percent slopes	1.47	Well drained	All areas are prime farmland	0.28
F 3	F 3	TuC	Tunkhannock gravelly loam, 8 to 15 percent slopes	3.34	Well drained	Farmland of statewide importance	0.28
F 4	F 4	Bc	Basher silt loam	1.39	Moderately well drained	All areas are prime farmland	0.32
F 4	F 4	Re	Rexford gravelly loam	0.26	Poorly drained	Farmland of statewide importance	0.24
F 4	F 4	TuB	Tunkhannock gravelly loam, 3 to 8 percent slopes	4.41	Well drained	All areas are prime farmland	0.28
F 5	F 5	Bb	Barbour fine sandy loam, occasionally flooded	5.13	Well drained	All areas are prime farmland	0.32
F 5	F 5	Bc	Basher silt loam	0.14	Moderately well drained	All areas are prime farmland	0.32
F 5	F 5	TuB	Tunkhannock gravelly loam, 3 to 8 percent slopes	0.34	Well drained	All areas are prime farmland	0.28
F 6	F 6	Bb	Barbour fine sandy loam, occasionally flooded	5.32	Well drained	All areas are prime farmland	0.32
F 6	F 6	TuB	Tunkhannock gravelly loam, 3 to 8 percent slopes	3.06	Well drained	All areas are prime farmland	0.28
F 6	F 6	Ud	Udfluents, loamy	0.57	Moderately well drained	Not prime farmland	0.49
F 7	F 7	TuA	Tunkhannock gravelly loam, 0 to 3 percent slopes	4.97	Well drained	All areas are prime farmland	0.28
F 7	F 7	TuB	Tunkhannock gravelly loam, 3 to 8 percent slopes	1.96	Well drained	All areas are prime farmland	0.28
F 7	F 7	Ud	Udfluents, loamy	0.01	Moderately well drained	Not prime farmland	0.49
F 8	F 8	Ba	Barbour fine sandy loam	4.92	Well drained	All areas are prime farmland	0.32
F 8	F 8	Ud	Udfluents, loamy	0.85	Moderately well drained	Not prime farmland	0.49
F 9	F 9	TuA	Tunkhannock gravelly loam, 0 to 3 percent slopes	0.48	Well drained	All areas are prime farmland	0.28
F 9	F 9	Ud	Udfluents, loamy	1	Moderately well drained	Not prime farmland	0.49

Field	Label	Musym	Muname	Acres	Drainage Class	Farmland Class	Kfact
T 20	T 20	DuB	Duncannon loam, 3 to 8 percent slopes	3	Well drained	All areas are prime farmland	0.37
T 20	T 20	HhB	Hartleton channery silt loam, 3 to 8 percent slopes	4.02	Well drained	Farmland of statewide importance	0.24
T 20	T 20	WsA	Wheeling silt loam, 0 to 3 percent slopes	2.58	Well drained	All areas are prime farmland	0.37

Soil Acreages For Farm

MUSYM	MUNAME	Drainage Class	Farmland Class	kfact	acres
AIB	Allenwood gravelly silt loam, 3 to 8 percent slopes	Well drained	All areas are prime farmland	0.32	34.08
Ba	Barbour fine sandy loam	Well drained	All areas are prime farmland	0.32	62.07
Bb	Barbour fine sandy loam, occasionally flooded	Well drained	All areas are prime farmland	0.32	71.23
Bc	Basher silt loam	Moderately well drained	All areas are prime farmland	0.32	35.6
DuB	Duncannon loam, 3 to 8 percent slopes	Well drained	All areas are prime farmland	0.37	16.63
HhB	Hartleton channery silt loam, 3 to 8 percent slopes	Well drained	Farmland of statewide importance	0.24	14.51
HhC	Hartleton channery silt loam, 8 to 15 percent slopes	Well drained	Farmland of statewide importance	0.24	12.33
KIC	Klinesville shaly silt loam, 8 to 15 percent slopes	Somewhat excessively drained	Not prime farmland	0.28	0.49
LkB	Leck kill channery silt loam, 3 to 8 percent slopes	Well drained	All areas are prime farmland	0.32	4.5
LkC	Leck kill channery silt loam, 8 to 15 percent slopes	Well drained	Farmland of statewide importance	0.32	7.52
LkD	Leck kill channery silt loam, 15 to 25 percent slopes	Well drained	Not prime farmland	0.32	0.02
Ln	Linden loam, occasionally flooded	Well drained	All areas are prime farmland	0.37	16.06
Re	Rexford gravelly loam	Poorly drained	Farmland of statewide importance	0.24	14.4
TuA	Tunkhannock gravelly loam, 0 to 3 percent slopes	Well drained	All areas are prime farmland	0.28	6.67
TuB	Tunkhannock gravelly loam, 3 to 8 percent slopes	Well drained	All areas are prime farmland	0.28	16.45
TuC	Tunkhannock gravelly loam, 8 to 15 percent slopes	Well drained	Farmland of statewide importance	0.28	6.12
Ud	Udifluvents, loamy	Moderately well drained	Not prime farmland	0.49	66.64

MUSYM	MUNAME	Drainage Class	Farmland Class	kfact	acres
UsB	Urban land-Udorthents complex, 0 to 8 percent slopes		Not prime farmland	0.32	1.37
WbA	Watson silt loam, 0 to 3 percent slopes	Moderately well drained	All areas are prime farmland	0.37	7.02
WbB	Watson silt loam, 3 to 8 percent slopes	Moderately well drained	All areas are prime farmland	0.37	1.57
WsA	Wheeling silt loam, 0 to 3 percent slopes	Well drained	All areas are prime farmland	0.37	2.58