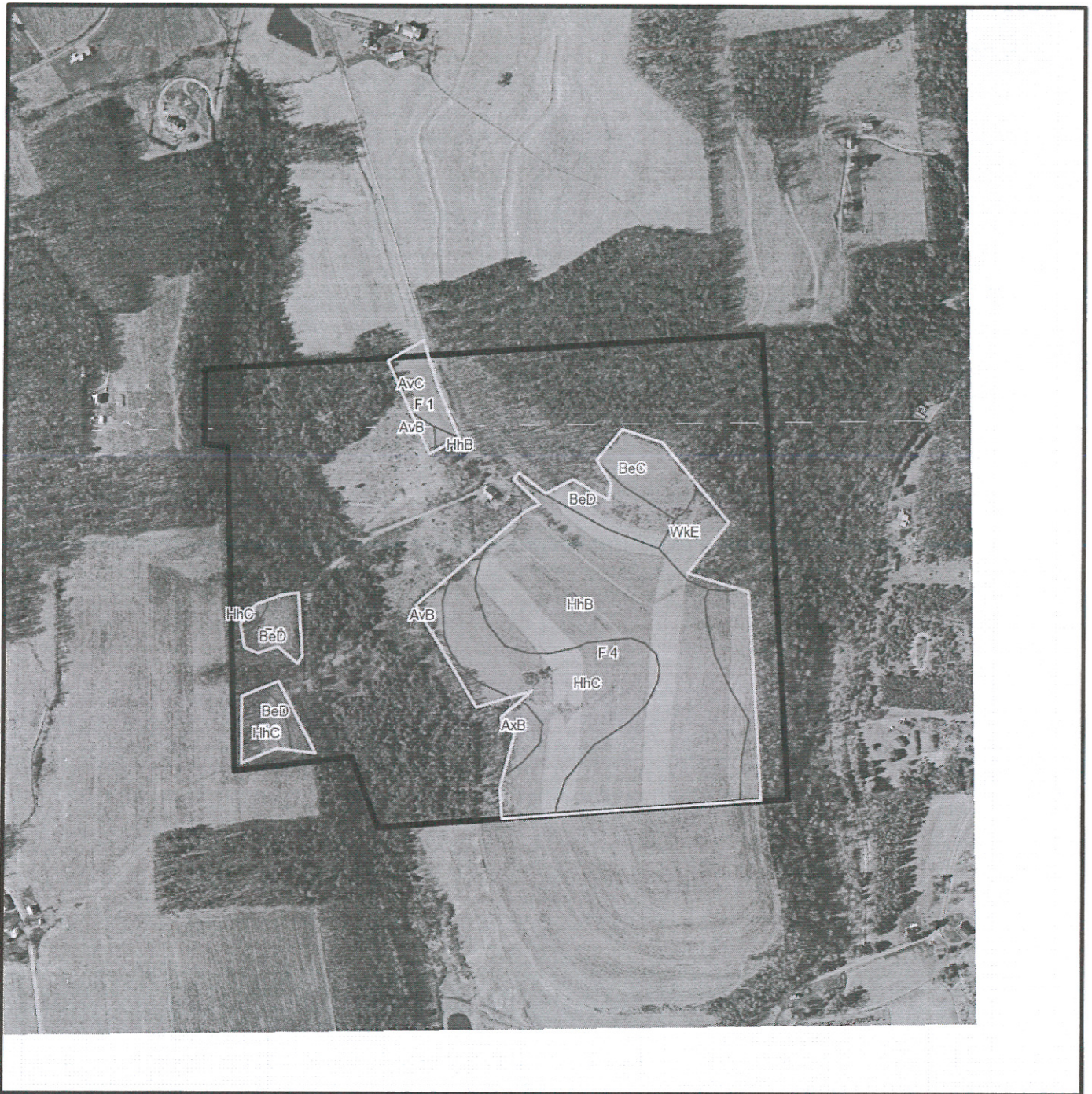


# T 496



\* 700.0 feet per inch



## Soil Acreages By Field

Field	Label	Musym	Muname	Comp	%	Acres	Drainage Class	Farmland Class	Tfact	Kfact
F 1	F 1	AvB	Alvira silt loam, 3 to 8 percent slopes	Alvira	82	0.22	Somewhat poorly drained	Farmland of statewide importance	3	0.32
F 1	F 1	AvC	Alvira silt loam, 8 to 15 percent slopes	Alvira	80	1.59	Somewhat poorly drained	Farmland of statewide importance	3	0.32
F 1	F 1	HhB	Hartleton channery silt loam, 3 to 8 percent slopes	Hartleton	75	0.15	Well drained	Farmland of statewide importance	3	0.24
F 2	F 2	BeD	Berks channery silt loam, 15 to 25 percent slopes	Berks	100	1.37	Well drained	Not prime farmland	3	0.32
F 2	F 2	HhC	Hartleton channery silt loam, 8 to 15 percent slopes	Hartleton	90	0.24	Well drained	Farmland of statewide importance	3	0.24
F 3	F 3	BeD	Berks channery silt loam, 15 to 25 percent slopes	Berks	100	0.55	Well drained	Not prime farmland	3	0.32
F 3	F 3	HhC	Hartleton channery silt loam, 8 to 15 percent slopes	Hartleton	90	1.45	Well drained	Farmland of statewide importance	3	0.24
F 4	F 4	AvB	Alvira silt loam, 3 to 8 percent slopes	Alvira	82	0.69	Somewhat poorly drained	Farmland of statewide importance	3	0.32
F 4	F 4	AxB	Alvira very stony loam, 0 to 8 percent slopes	Alvira	90	1.38	Somewhat poorly drained	Not prime farmland	3	0.32
F 4	F 4	BeC	Berks channery silt loam, 8 to 15 percent slopes	Berks	100	2.62	Well drained	Farmland of statewide importance	3	0.32
F 4	F 4	BeD	Berks channery silt loam, 15 to 25 percent slopes	Berks	100	2.34	Well drained	Not prime farmland	3	0.32
F 4	F 4	HhB	Hartleton channery silt loam, 3 to 8 percent slopes	Hartleton	75	24.33	Well drained	Farmland of statewide importance	3	0.24

Field	Label	Musym	Muname	Comp	%	Acres	Drainage Class	Farmland Class	Tfact	Kfact
F 4	F 4	HhC	Hartleton channery silt loam, 8 to 15 percent slopes	Hartleton	90	14.38	Well drained	Farmland of statewide importance	3	0.24
F 4	F 4	WkE	Weikert and Klinesville shaly silt loams, 25 to 80 percent slopes	Weikert	55	1.1	Somewhat excessively drained	Not prime farmland	2	0.32
F 4	F 4	WkE	Weikert and Klinesville shaly silt loams, 25 to 80 percent slopes	Klinesville	35	0.7	Somewhat excessively drained	Not prime farmland	2	0.28

### Soil Acreages For Farm

Musym	Muname	Comp	%	Acres	Drainage Class	Farmland Class	Tfact	Kfact
AvB	Alvira silt loam, 3 to 8 percent slopes	Alvira	82	0.91	Somewhat poorly drained	Farmland of statewide importance	3	0.32
AxB	Alvira very stony loam, 0 to 8 percent slopes	Alvira	90	1.38	Somewhat poorly drained	Not prime farmland	3	0.32
BeC	Berks channery silt loam, 8 to 15 percent slopes	Berks	100	2.62	Well drained	Farmland of statewide importance	3	0.32
BeD	Berks channery silt loam, 15 to 25 percent slopes	Berks	100	4.26	Well drained	Not prime farmland	3	0.32
HhB	Hartleton channery silt loam, 3 to 8 percent slopes	Hartleton	75	24.48	Well drained	Farmland of statewide importance	3	0.24
HhC	Hartleton channery silt loam, 8 to 15 percent slopes	Hartleton	90	16.07	Well drained	Farmland of statewide importance	3	0.24
WkE	Weikert and Klinesville shaly silt loams, 25 to 80 percent slopes	Weikert	55	1.1	Somewhat excessively drained	Not prime farmland	2	0.32
WkE	Weikert and Klinesville shaly silt loams, 25 to 80 percent slopes	Klinesville	35	0.7	Somewhat excessively drained	Not prime farmland	2	0.28

Musym	Muname	Comp	%	Acres	Drainage Class	Farmland Class	Tfact	Kfact
AvC	Alvira silt loam, 8 to 15 percent slopes	Alvira	80	1.59	Somewhat poorly drained	Farmland of statewide importance	3	0.32