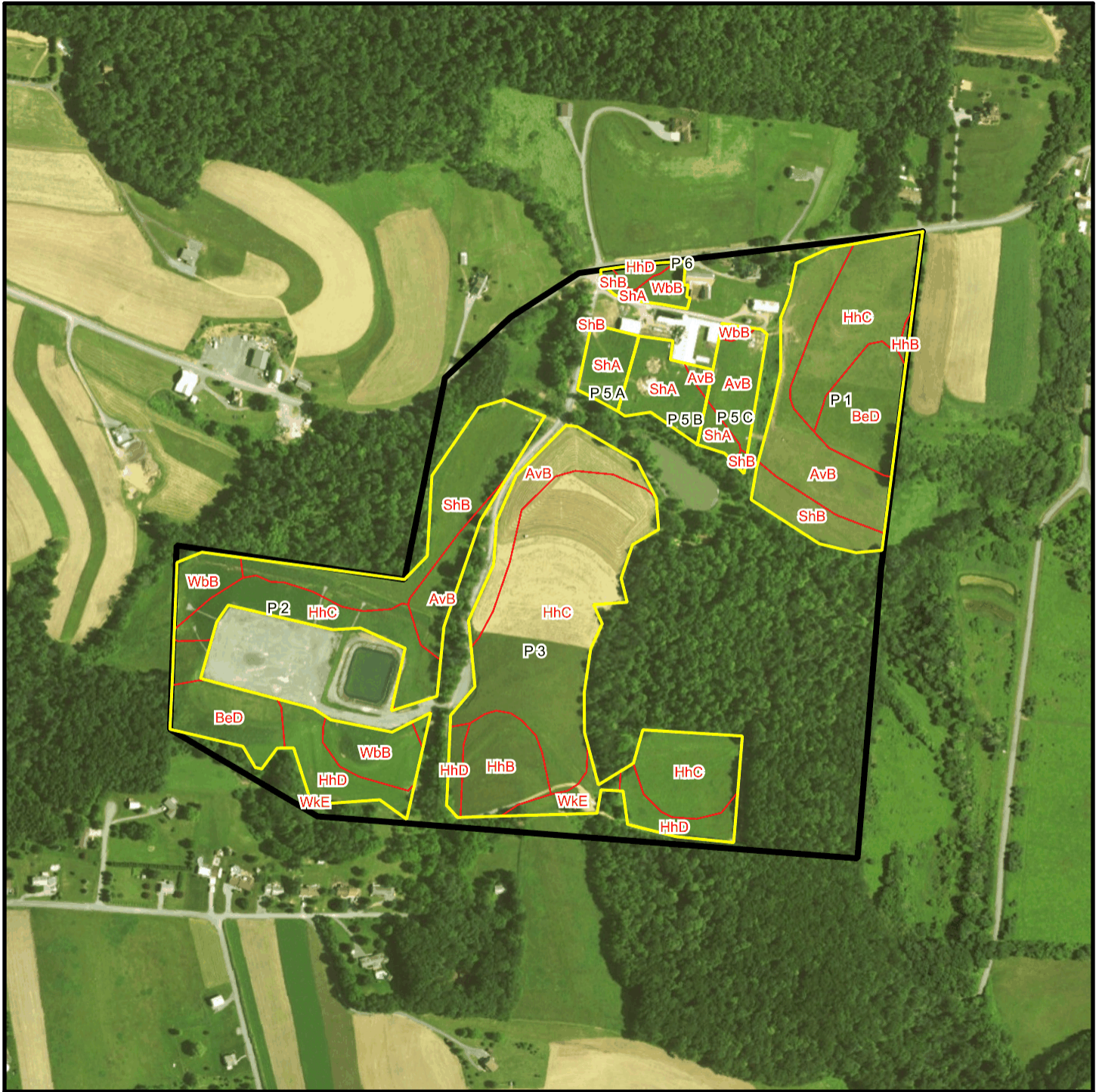
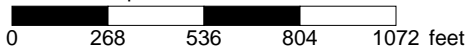


# Reitz T 1722 Soil Map



\* 536.0 feet per inch



## Soil Acreages By Field

Field	Label	Musym	Muname	Comp	%	Acres	Drainage Class	Farmland Class	Tfact	Kfact
P 1	P 1	AvB	Alvira silt loam, 3 to 8 percent slopes	Alvira	82	4.02	Somewhat poorly drained	Farmland of statewide importance	3	0.32
P 1	P 1	BeD	Berks channery silt loam, 15 to 25 percent slopes	Berks	100	2.47	Well drained	Not prime farmland	3	0.32
P 1	P 1	HhB	Hartleton channery silt loam, 3 to 8 percent slopes	Hartleton	75	0.1	Well drained	Farmland of statewide importance	3	0.24
P 1	P 1	HhC	Hartleton channery silt loam, 8 to 15 percent slopes	Hartleton	90	3.79	Well drained	Farmland of statewide importance	3	0.24
P 1	P 1	ShB	Shelmadine silt loam, 3 to 8 percent slopes	Shelmadine	90	1.4	Poorly drained	Not prime farmland	3	0.32
P 2	P 2	AvB	Alvira silt loam, 3 to 8 percent slopes	Alvira	82	1.28	Somewhat poorly drained	Farmland of statewide importance	3	0.32
P 2	P 2	BeD	Berks channery silt loam, 15 to 25 percent slopes	Berks	100	2	Well drained	Not prime farmland	3	0.32
P 2	P 2	HhC	Hartleton channery silt loam, 8 to 15 percent slopes	Hartleton	90	3	Well drained	Farmland of statewide importance	3	0.24
P 2	P 2	HhD	Hartleton channery silt loam, 15 to 25 percent slopes	Hartleton	90	2.11	Well drained	Not prime farmland	3	0.24
P 2	P 2	ShB	Shelmadine silt loam, 3 to 8 percent slopes	Shelmadine	90	4.3	Poorly drained	Not prime farmland	3	0.32
P 2	P 2	WbB	Watson silt loam, 3 to 8 percent slopes	Watson	90	2.46	Moderately well drained	All areas are prime farmland	3	0.37
P 2	P 2	WkE	Weikert and Klinesville shaly silt loams, 25 to 80 percent slopes	Weikert	55	0.01	Somewhat excessively drained	Not prime farmland	2	0.32

Field	Label	Musym	Muname	Comp	%	Acres	Drainage Class	Farmland Class	Tfact	Kfact
P 2	P 2	WkE	Weikert and Klinesville shaly silt loams, 25 to 80 percent slopes	Klinesville	35	< 0.01	Somewhat excessively drained	Not prime farmland	2	0.28
P 3	P 3	AvB	Alvira silt loam, 3 to 8 percent slopes	Alvira	82	2.27	Somewhat poorly drained	Farmland of statewide importance	3	0.32
P 3	P 3	HhB	Hartleton channery silt loam, 3 to 8 percent slopes	Hartleton	75	2.29	Well drained	Farmland of statewide importance	3	0.24
P 3	P 3	HhC	Hartleton channery silt loam, 8 to 15 percent slopes	Hartleton	90	12.51	Well drained	Farmland of statewide importance	3	0.24
P 3	P 3	HhD	Hartleton channery silt loam, 15 to 25 percent slopes	Hartleton	90	1.47	Well drained	Not prime farmland	3	0.24
P 3	P 3	WkE	Weikert and Klinesville shaly silt loams, 25 to 80 percent slopes	Weikert	55	0.46	Somewhat excessively drained	Not prime farmland	2	0.32
P 3	P 3	WkE	Weikert and Klinesville shaly silt loams, 25 to 80 percent slopes	Klinesville	35	0.29	Somewhat excessively drained	Not prime farmland	2	0.28
P 5 A	P 5 A	ShA	Shelmadine silt loam, 0 to 3 percent slopes	Shelmadine	90	1.06	Poorly drained	Not prime farmland	3	0.32
P 5 A	P 5 A	ShB	Shelmadine silt loam, 3 to 8 percent slopes	Shelmadine	90	< 0.01	Poorly drained	Not prime farmland	3	0.32
P 5 B	P 5 B	AvB	Alvira silt loam, 3 to 8 percent slopes	Alvira	82	0.15	Somewhat poorly drained	Farmland of statewide importance	3	0.32
P 5 B	P 5 B	ShA	Shelmadine silt loam, 0 to 3 percent slopes	Shelmadine	90	1.7	Poorly drained	Not prime farmland	3	0.32
P 5 C	P 5 C	AvB	Alvira silt loam, 3 to 8 percent slopes	Alvira	82	1.39	Somewhat poorly drained	Farmland of statewide importance	3	0.32
P 5 C	P 5 C	ShA	Shelmadine silt loam, 0 to 3 percent slopes	Shelmadine	90	0.4	Poorly drained	Not prime farmland	3	0.32

Field	Label	Musym	Muname	Comp	%	Acres	Drainage Class	Farmland Class	Tfact	Kfact
P 5 C	P 5 C	ShB	Shelmadine silt loam, 3 to 8 percent slopes	Shelmadine	90	0.05	Poorly drained	Not prime farmland	3	0.32
P 5 C	P 5 C	WbB	Watson silt loam, 3 to 8 percent slopes	Watson	90	0.13	Moderately well drained	All areas are prime farmland	3	0.37
P 6	P 6	HhD	Hartleton channery silt loam, 15 to 25 percent slopes	Hartleton	90	0.27	Well drained	Not prime farmland	3	0.24
P 6	P 6	ShA	Shelmadine silt loam, 0 to 3 percent slopes	Shelmadine	90	0.06	Poorly drained	Not prime farmland	3	0.32
P 6	P 6	ShB	Shelmadine silt loam, 3 to 8 percent slopes	Shelmadine	90	0.14	Poorly drained	Not prime farmland	3	0.32
P 6	P 6	WbB	Watson silt loam, 3 to 8 percent slopes	Watson	90	0.48	Moderately well drained	All areas are prime farmland	3	0.37

### Soil Acreages For Farm

Musym	Muname	Comp	%	Acres	Drainage Class	Farmland Class	Tfact	Kfact
AvB	Alvira silt loam, 3 to 8 percent slopes	Alvira	82	9.11	Somewhat poorly drained	Farmland of statewide importance	3	0.32
BeD	Berks channery silt loam, 15 to 25 percent slopes	Berks	100	4.47	Well drained	Not prime farmland	3	0.32
HhB	Hartleton channery silt loam, 3 to 8 percent slopes	Hartleton	75	2.39	Well drained	Farmland of statewide importance	3	0.24
HhC	Hartleton channery silt loam, 8 to 15 percent slopes	Hartleton	90	19.3	Well drained	Farmland of statewide importance	3	0.24
ShB	Shelmadine silt loam, 3 to 8 percent slopes	Shelmadine	90	5.89	Poorly drained	Not prime farmland	3	0.32
HhD	Hartleton channery silt loam, 15 to 25 percent slopes	Hartleton	90	3.85	Well drained	Not prime farmland	3	0.24

Musym	Muname	Comp	%	Acres	Drainage Class	Farmland Class	Tfact	Kfact
WbB	Watson silt loam, 3 to 8 percent slopes	Watson	90	3.07	Moderately well drained	All areas are prime farmland	3	0.37
WkE	Weikert and Klinesville shaly silt loams, 25 to 80 percent slopes	Weikert	55	0.47	Somewhat excessively drained	Not prime farmland	2	0.32
WkE	Weikert and Klinesville shaly silt loams, 25 to 80 percent slopes	Klinesville	35	0.29	Somewhat excessively drained	Not prime farmland	2	0.28
ShA	Shelmadine silt loam, 0 to 3 percent slopes	Shelmadine	90	3.22	Poorly drained	Not prime farmland	3	0.32