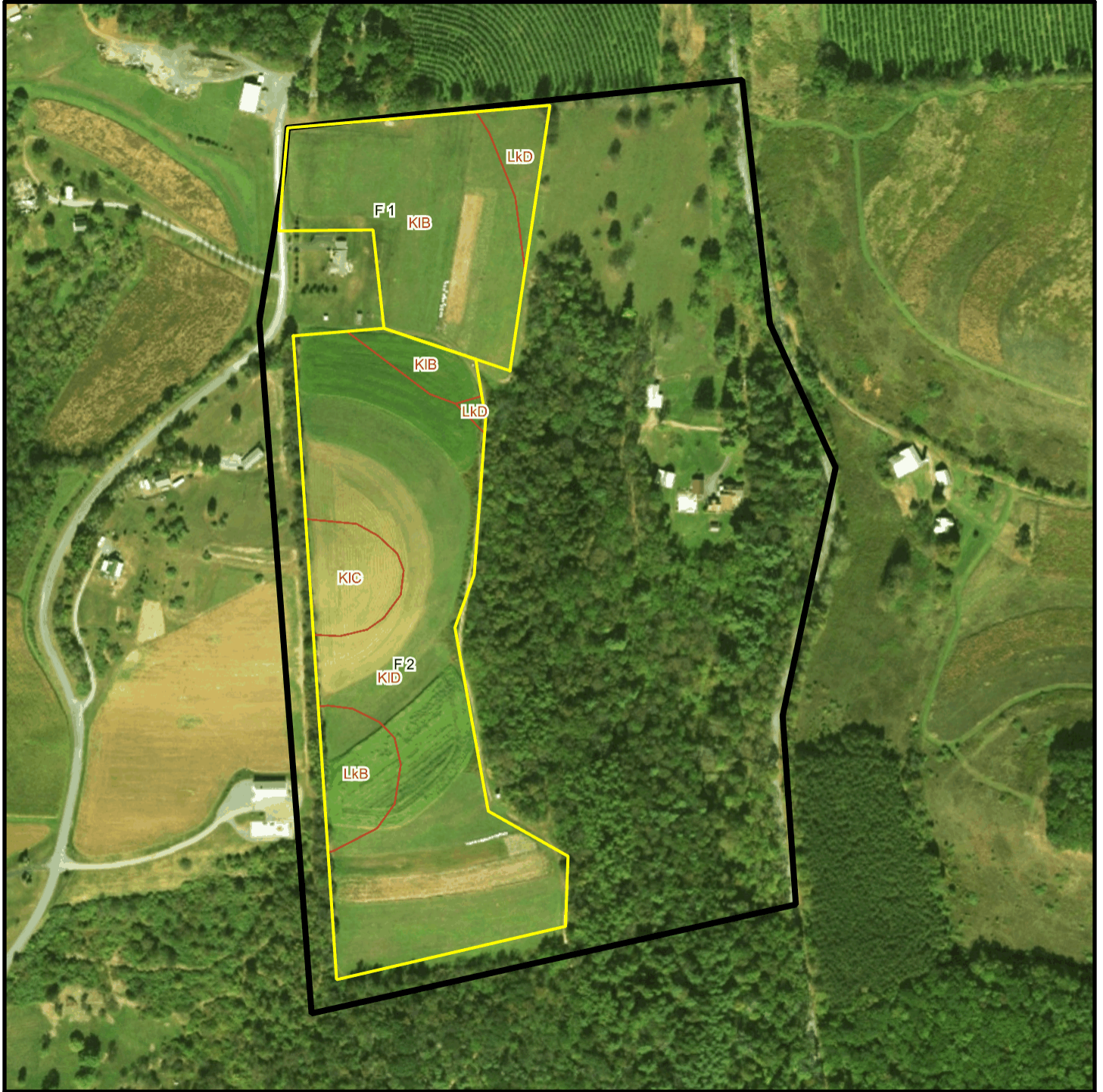
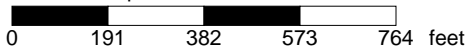


McCoy T 3704 Soil Map



* 382.0 feet per inch



Soil Acreages By Field

Field	Label	Musym	Muname	Comp	%	Acres	Drainage Class	Farmland Class	Tfact	Kfact
F 1	F 1	KIB	Klinesville shaly silt loam, 3 to 8 percent slopes	Klinesville	90	6.55	Somewhat excessively drained	Farmland of statewide importance	2	0.28
F 1	F 1	LkD	Leck kill channery silt loam, 15 to 25 percent slopes	Leck Kill	80	0.77	Well drained	Not prime farmland	4	0.32
F 2	F 2	KIB	Klinesville shaly silt loam, 3 to 8 percent slopes	Klinesville	90	0.76	Somewhat excessively drained	Farmland of statewide importance	2	0.28
F 2	F 2	KIC	Klinesville shaly silt loam, 8 to 15 percent slopes	Klinesville	90	1.42	Somewhat excessively drained	Not prime farmland	2	0.28
F 2	F 2	KID	Klinesville shaly silt loam, 15 to 25 percent slopes	Klinesville	100	13.83	Somewhat excessively drained	Not prime farmland	2	0.28
F 2	F 2	LkB	Leck kill channery silt loam, 3 to 8 percent slopes	Leck Kill	85	1.4	Well drained	All areas are prime farmland	4	0.32
F 2	F 2	LkD	Leck kill channery silt loam, 15 to 25 percent slopes	Leck Kill	80	0.09	Well drained	Not prime farmland	4	0.32

Soil Acreages For Farm

Musym	Muname	Comp	%	Acres	Drainage Class	Farmland Class	Tfact	Kfact
KIB	Klinesville shaly silt loam, 3 to 8 percent slopes	Klinesville	90	7.31	Somewhat excessively drained	Farmland of statewide importance	2	0.28
LkD	Leck kill channery silt loam, 15 to 25 percent slopes	Leck Kill	80	0.86	Well drained	Not prime farmland	4	0.32
KIC	Klinesville shaly silt loam, 8 to 15 percent slopes	Klinesville	90	1.42	Somewhat excessively drained	Not prime farmland	2	0.28
KID	Klinesville shaly silt loam, 15 to 25 percent slopes	Klinesville	100	13.83	Somewhat excessively drained	Not prime farmland	2	0.28
LkB	Leck kill channery silt loam, 3 to 8 percent slopes	Leck Kill	85	1.4	Well drained	All areas are prime farmland	4	0.32