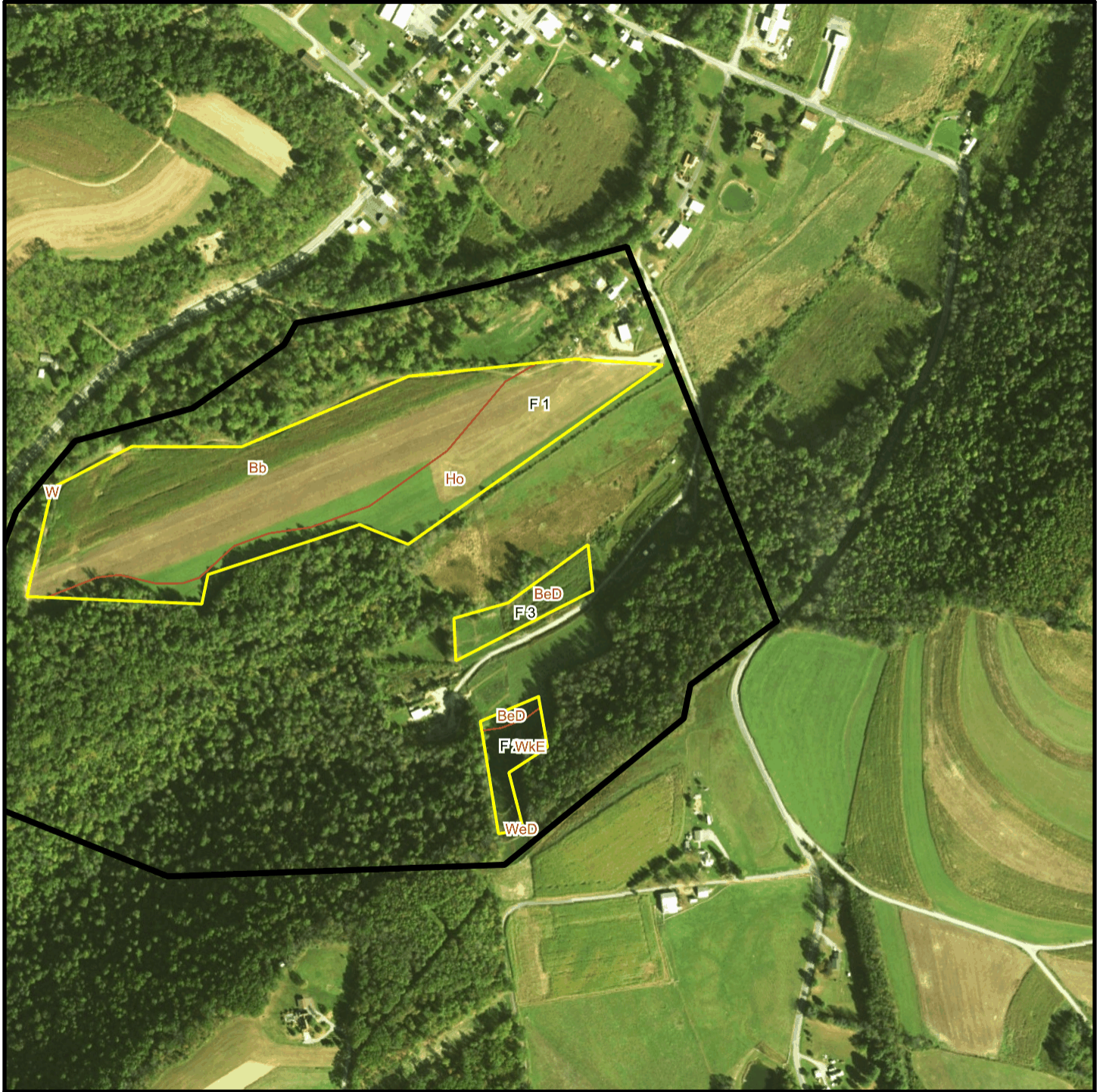
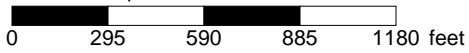


Koons T 706 Soil Map



* 590.0 feet per inch



Soil Acreages By Field

Field	Label	Musym	Muname	Comp	%	Acres	Drainage Class	Farmland Class	Tfact	Kfact
F 1	F 1	Bb	Barbour fine sandy loam, occasionally flooded	Barbour	90	18.35	Well drained	All areas are prime farmland	5	0.32
F 1	F 1	Ho	Holly silt loam	Holly	100	8.84	Very poorly drained	Not prime farmland	5	0.28
F 2	F 2	BeD	Berks channery silt loam, 15 to 25 percent slopes	Berks	100	0.32	Well drained	Not prime farmland	3	0.32
F 2	F 2	WeD	Weikert shaly silt loam, 15 to 25 percent slopes	Weikert	85	< 0.01	Somewhat excessively drained	Not prime farmland	2	0.32
F 2	F 2	WkE	Weikert and Klinesville shaly silt loams, 25 to 80 percent slopes	Weikert	55	0.92	Somewhat excessively drained	Not prime farmland	2	0.32
F 2	F 2	WkE	Weikert and Klinesville shaly silt loams, 25 to 80 percent slopes	Klinesville	35	0.58	Somewhat excessively drained	Not prime farmland	2	0.28
F 3	F 3	BeD	Berks channery silt loam, 15 to 25 percent slopes	Berks	100	2	Well drained	Not prime farmland	3	0.32

Soil Acreages For Farm

Musym	Muname	Comp	%	Acres	Drainage Class	Farmland Class	Tfact	Kfact
Bb	Barbour fine sandy loam, occasionally flooded	Barbour	90	18.35	Well drained	All areas are prime farmland	5	0.32
Ho	Holly silt loam	Holly	100	8.84	Very poorly drained	Not prime farmland	5	0.28
BeD	Berks channery silt loam, 15 to 25 percent slopes	Berks	100	2.32	Well drained	Not prime farmland	3	0.32
WeD	Weikert shaly silt loam, 15 to 25 percent slopes	Weikert	85	0	Somewhat excessively drained	Not prime farmland	2	0.32
WkE	Weikert and Klinesville shaly silt loams, 25 to 80 percent slopes	Weikert	55	0.92	Somewhat excessively drained	Not prime farmland	2	0.32

Musym	Muname	Comp	%	Acres	Drainage Class	Farmland Class	Tfact	Kfact
WkE	Weikert and Klinesville shaly silt loams, 25 to 80 percent slopes	Klinesville	35	0.58	Somewhat excessively drained	Not prime farmland	2	0.28