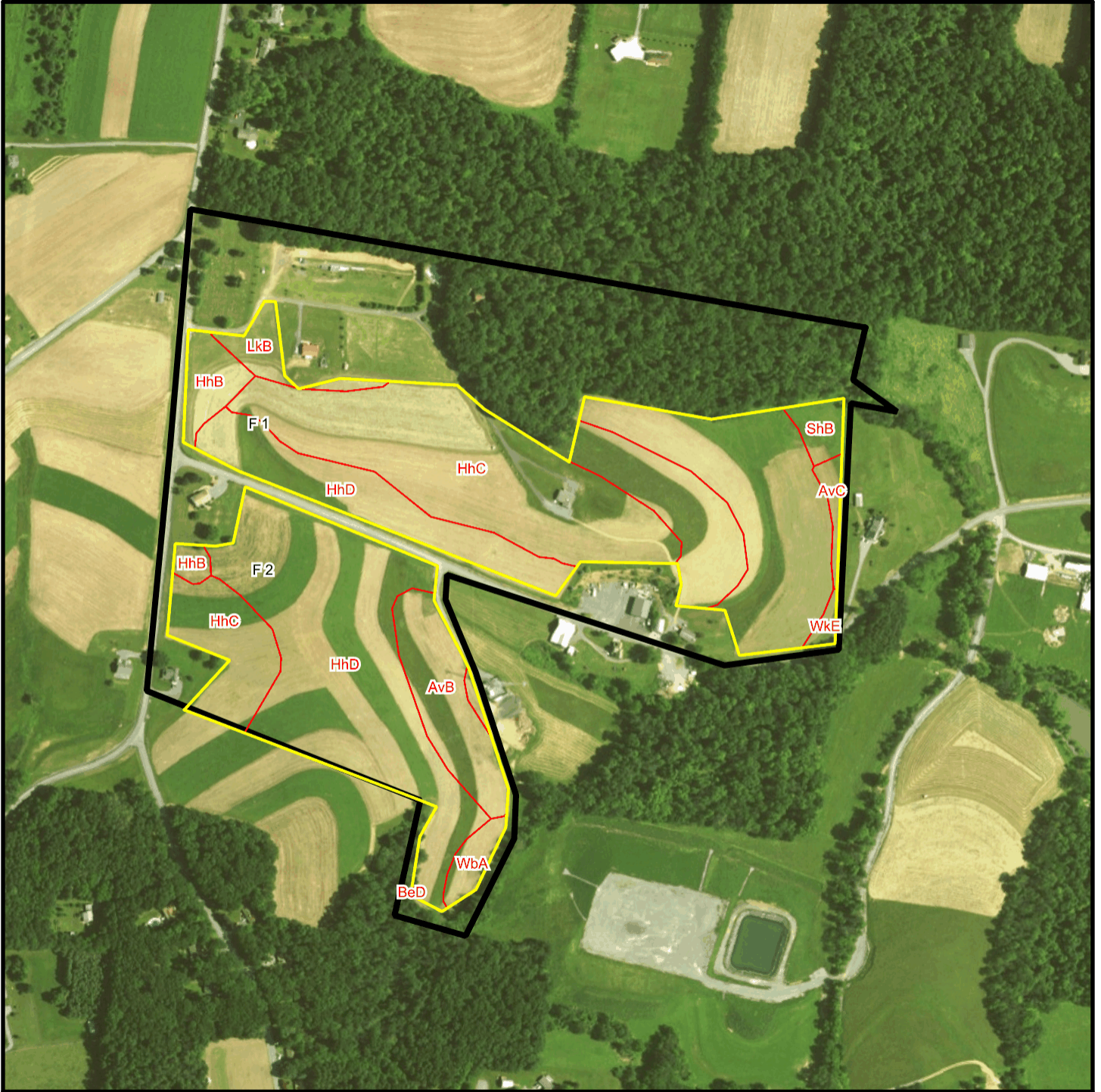
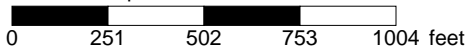


Harvey T 2170 Soil Map



* 502.0 feet per inch



Soil Acreages By Field

Field	Label	Musym	Muname	Comp	%	Acres	Drainage Class	Farmland Class	Tfact	Kfact
F 1	F 1	AvC	Alvira silt loam, 8 to 15 percent slopes	Alvira	80	0.41	Somewhat poorly drained	Farmland of statewide importance	3	0.32
F 1	F 1	HhB	Hartleton channery silt loam, 3 to 8 percent slopes	Hartleton	75	1.23	Well drained	Farmland of statewide importance	3	0.24
F 1	F 1	HhC	Hartleton channery silt loam, 8 to 15 percent slopes	Hartleton	90	18.33	Well drained	Farmland of statewide importance	3	0.24
F 1	F 1	HhD	Hartleton channery silt loam, 15 to 25 percent slopes	Hartleton	90	7.83	Well drained	Not prime farmland	3	0.24
F 1	F 1	LkB	Leck kill channery silt loam, 3 to 8 percent slopes	Leck Kill	85	1.02	Well drained	All areas are prime farmland	4	0.32
F 1	F 1	ShB	Shelmadine silt loam, 3 to 8 percent slopes	Shelmadine	90	0.71	Poorly drained	Not prime farmland	3	0.32
F 1	F 1	WkE	Weikert and Klinesville shaly silt loams, 25 to 80 percent slopes	Weikert	55	0.15	Somewhat excessively drained	Not prime farmland	2	0.32
F 1	F 1	WkE	Weikert and Klinesville shaly silt loams, 25 to 80 percent slopes	Klinesville	35	0.1	Somewhat excessively drained	Not prime farmland	2	0.28
F 2	F 2	AvB	Alvira silt loam, 3 to 8 percent slopes	Alvira	82	3.24	Somewhat poorly drained	Farmland of statewide importance	3	0.32
F 2	F 2	BeD	Berks channery silt loam, 15 to 25 percent slopes	Berks	100	0.01	Well drained	Not prime farmland	3	0.32
F 2	F 2	HhB	Hartleton channery silt loam, 3 to 8 percent slopes	Hartleton	75	0.34	Well drained	Farmland of statewide importance	3	0.24
F 2	F 2	HhC	Hartleton channery silt loam, 8 to 15 percent slopes	Hartleton	90	2.91	Well drained	Farmland of statewide importance	3	0.24

Field	Label	Musym	Muname	Comp	%	Acres	Drainage Class	Farmland Class	Tfact	Kfact
F 2	F 2	HhD	Hartleton channery silt loam, 15 to 25 percent slopes	Hartleton	90	12.7	Well drained	Not prime farmland	3	0.24
F 2	F 2	WbA	Watson silt loam, 0 to 3 percent slopes	Watson	90	0.86	Moderately well drained	All areas are prime farmland	3	0.37

Soil Acreages For Farm

Musym	Muname	Comp	%	Acres	Drainage Class	Farmland Class	Tfact	Kfact
AvC	Alvira silt loam, 8 to 15 percent slopes	Alvira	80	0.41	Somewhat poorly drained	Farmland of statewide importance	3	0.32
HhB	Hartleton channery silt loam, 3 to 8 percent slopes	Hartleton	75	1.57	Well drained	Farmland of statewide importance	3	0.24
HhC	Hartleton channery silt loam, 8 to 15 percent slopes	Hartleton	90	21.24	Well drained	Farmland of statewide importance	3	0.24
HhD	Hartleton channery silt loam, 15 to 25 percent slopes	Hartleton	90	20.53	Well drained	Not prime farmland	3	0.24
LkB	Leck kill channery silt loam, 3 to 8 percent slopes	Leck Kill	85	1.02	Well drained	All areas are prime farmland	4	0.32
ShB	Shelmadine silt loam, 3 to 8 percent slopes	Shelmadine	90	0.71	Poorly drained	Not prime farmland	3	0.32
WkE	Weikert and Klinesville shaly silt loams, 25 to 80 percent slopes	Weikert	55	0.15	Somewhat excessively drained	Not prime farmland	2	0.32
WkE	Weikert and Klinesville shaly silt loams, 25 to 80 percent slopes	Klinesville	35	0.1	Somewhat excessively drained	Not prime farmland	2	0.28
AvB	Alvira silt loam, 3 to 8 percent slopes	Alvira	82	3.24	Somewhat poorly drained	Farmland of statewide importance	3	0.32
BeD	Berks channery silt loam, 15 to 25 percent slopes	Berks	100	0.01	Well drained	Not prime farmland	3	0.32

Musym	Muname	Comp	%	Acres	Drainage Class	Farmland Class	Tfact	Kfact
WbA	Watson silt loam, 0 to 3 percent slopes	Watson	90	0.86	Moderately well drained	All areas are prime farmland	3	0.37