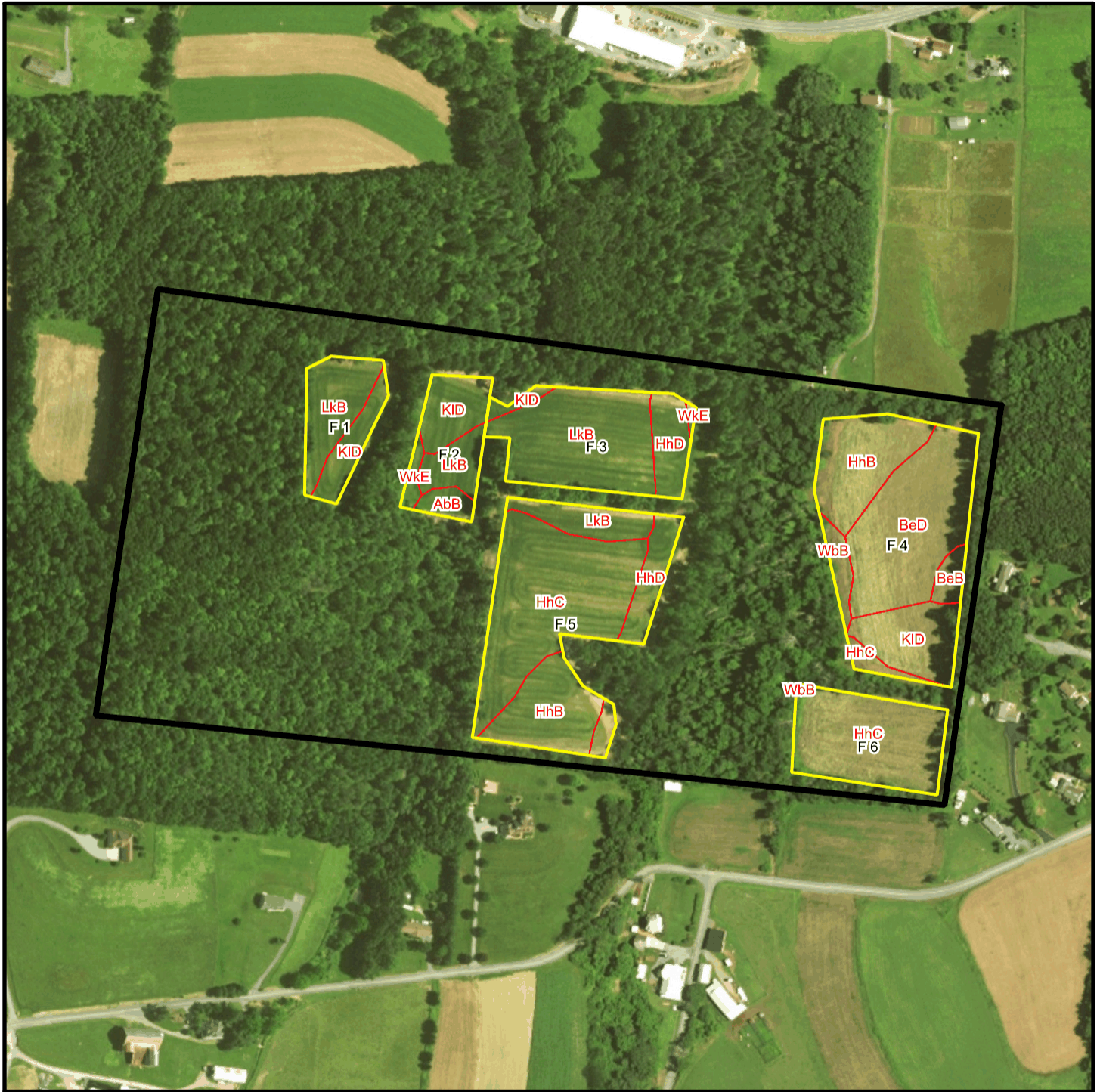
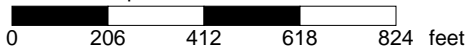


Harvey T 1771 Soil Map



* 412.0 feet per inch



Soil Acreages By Field

Field	Label	Musym	Muname	Comp	%	Acres	Drainage Class	Farmland Class	Tfact	Kfact
F 1	F 1	KID	Klinesville shaly silt loam, 15 to 25 percent slopes	Klinesville	100	0.57	Somewhat excessively drained	Not prime farmland	2	0.28
F 1	F 1	LkB	Leck kill channery silt loam, 3 to 8 percent slopes	Leck Kill	85	1.08	Well drained	All areas are prime farmland	4	0.32
F 2	F 2	AbB	Albrights silt loam, 3 to 8 percent slopes	Albrights	85	0.27	Moderately well drained	All areas are prime farmland	3	0.37
F 2	F 2	KID	Klinesville shaly silt loam, 15 to 25 percent slopes	Klinesville	100	0.76	Somewhat excessively drained	Not prime farmland	2	0.28
F 2	F 2	LkB	Leck kill channery silt loam, 3 to 8 percent slopes	Leck Kill	85	0.55	Well drained	All areas are prime farmland	4	0.32
F 2	F 2	WkE	Weikert and Klinesville shaly silt loams, 25 to 80 percent slopes	Weikert	55	0.1	Somewhat excessively drained	Not prime farmland	2	0.32
F 2	F 2	WkE	Weikert and Klinesville shaly silt loams, 25 to 80 percent slopes	Klinesville	35	0.06	Somewhat excessively drained	Not prime farmland	2	0.28
F 3	F 3	HhD	Hartleton channery silt loam, 15 to 25 percent slopes	Hartleton	90	0.65	Well drained	Not prime farmland	3	0.24
F 3	F 3	KID	Klinesville shaly silt loam, 15 to 25 percent slopes	Klinesville	100	0.15	Somewhat excessively drained	Not prime farmland	2	0.28
F 3	F 3	LkB	Leck kill channery silt loam, 3 to 8 percent slopes	Leck Kill	85	2.63	Well drained	All areas are prime farmland	4	0.32
F 3	F 3	WkE	Weikert and Klinesville shaly silt loams, 25 to 80 percent slopes	Weikert	55	0.02	Somewhat excessively drained	Not prime farmland	2	0.32
F 3	F 3	WkE	Weikert and Klinesville shaly silt loams, 25 to 80 percent slopes	Klinesville	35	0.02	Somewhat excessively drained	Not prime farmland	2	0.28
F 4	F 4	BeB	Berks channery silt loam, 3 to 8 percent slopes	Berks	100	0.26	Well drained	Farmland of statewide importance	3	0.32

Field	Label	Musym	Muname	Comp	%	Acres	Drainage Class	Farmland Class	Tfact	Kfact
F 4	F 4	BeD	Berks channery silt loam, 15 to 25 percent slopes	Berks	100	2.95	Well drained	Not prime farmland	3	0.32
F 4	F 4	HhB	Hartleton channery silt loam, 3 to 8 percent slopes	Hartleton	75	1.57	Well drained	Farmland of statewide importance	3	0.24
F 4	F 4	HhC	Hartleton channery silt loam, 8 to 15 percent slopes	Hartleton	90	0.2	Well drained	Farmland of statewide importance	3	0.24
F 4	F 4	KID	Klinesville shaly silt loam, 15 to 25 percent slopes	Klinesville	100	1.18	Somewhat excessively drained	Not prime farmland	2	0.28
F 4	F 4	WbB	Watson silt loam, 3 to 8 percent slopes	Watson	90	0.31	Moderately well drained	All areas are prime farmland	3	0.37
F 5	F 5	HhB	Hartleton channery silt loam, 3 to 8 percent slopes	Hartleton	75	1.35	Well drained	Farmland of statewide importance	3	0.24
F 5	F 5	HhC	Hartleton channery silt loam, 8 to 15 percent slopes	Hartleton	90	3.58	Well drained	Farmland of statewide importance	3	0.24
F 5	F 5	HhD	Hartleton channery silt loam, 15 to 25 percent slopes	Hartleton	90	0.8	Well drained	Not prime farmland	3	0.24
F 5	F 5	LkB	Leck kill channery silt loam, 3 to 8 percent slopes	Leck Kill	85	0.69	Well drained	All areas are prime farmland	4	0.32
F 6	F 6	HhC	Hartleton channery silt loam, 8 to 15 percent slopes	Hartleton	90	2.4	Well drained	Farmland of statewide importance	3	0.24
F 6	F 6	WbB	Watson silt loam, 3 to 8 percent slopes	Watson	90	0.01	Moderately well drained	All areas are prime farmland	3	0.37

Soil Acreages For Farm

Musym	Muname	Comp	%	Acres	Drainage Class	Farmland Class	Tfact	Kfact
KID	Klinesville shaly silt loam, 15 to 25 percent slopes	Klinesville	100	2.66	Somewhat excessively drained	Not prime farmland	2	0.28

Musym	Muname	Comp	%	Acres	Drainage Class	Farmland Class	Tfact	Kfact
LkB	Leck kill channery silt loam, 3 to 8 percent slopes	Leck Kill	85	4.95	Well drained	All areas are prime farmland	4	0.32
AbB	Albrights silt loam, 3 to 8 percent slopes	Albrights	85	0.27	Moderately well drained	All areas are prime farmland	3	0.37
WkE	Weikert and Klinesville shaly silt loams, 25 to 80 percent slopes	Weikert	55	0.12	Somewhat excessively drained	Not prime farmland	2	0.32
WkE	Weikert and Klinesville shaly silt loams, 25 to 80 percent slopes	Klinesville	35	0.08	Somewhat excessively drained	Not prime farmland	2	0.28
HhD	Hartleton channery silt loam, 15 to 25 percent slopes	Hartleton	90	1.45	Well drained	Not prime farmland	3	0.24
BeB	Berks channery silt loam, 3 to 8 percent slopes	Berks	100	0.26	Well drained	Farmland of statewide importance	3	0.32
BeD	Berks channery silt loam, 15 to 25 percent slopes	Berks	100	2.95	Well drained	Not prime farmland	3	0.32
HhB	Hartleton channery silt loam, 3 to 8 percent slopes	Hartleton	75	2.92	Well drained	Farmland of statewide importance	3	0.24
HhC	Hartleton channery silt loam, 8 to 15 percent slopes	Hartleton	90	6.18	Well drained	Farmland of statewide importance	3	0.24
WbB	Watson silt loam, 3 to 8 percent slopes	Watson	90	0.32	Moderately well drained	All areas are prime farmland	3	0.37