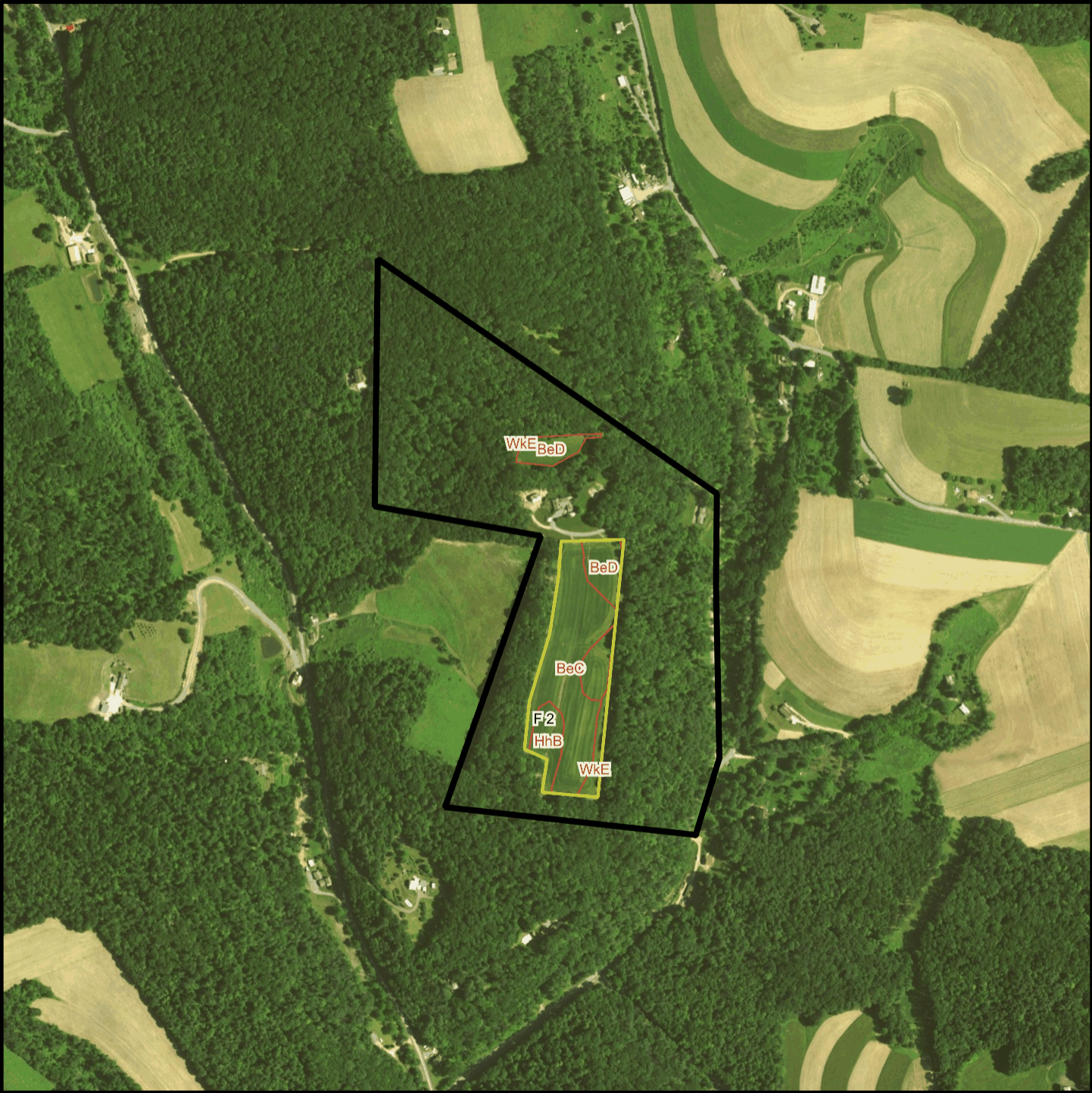


Harvey T 1579 Soil Map



* 696.0 feet per inch
0 348 696 1044 1392 feet



Soil Acreages By Field

Field	Label	Musym	Muname	Comp	%	Acres	Drainage Class	Farmland Class	Tfact	Kfact
F 2	F 2	BeC	Berks channery silt loam, 8 to 15 percent slopes	Berks	100	5.53	Well drained	Farmland of statewide importance	3	0.32
F 2	F 2	BeD	Berks channery silt loam, 15 to 25 percent slopes	Berks	100	1.88	Well drained	Not prime farmland	3	0.32
F 2	F 2	HhB	Hartleton channery silt loam, 3 to 8 percent slopes	Hartleton	75	0.99	Well drained	Farmland of statewide importance	3	0.24
F 2	F 2	WkE	Weikert and Klinesville shaly silt loams, 25 to 80 percent slopes	Weikert	55	0.36	Somewhat excessively drained	Not prime farmland	2	0.32
F 2	F 2	WkE	Weikert and Klinesville shaly silt loams, 25 to 80 percent slopes	Klinesville	35	0.23	Somewhat excessively drained	Not prime farmland	2	0.28

Soil Acreages For Farm

Musym	Muname	Comp	%	Acres	Drainage Class	Farmland Class	Tfact	Kfact
BeC	Berks channery silt loam, 8 to 15 percent slopes	Berks	100	5.53	Well drained	Farmland of statewide importance	3	0.32
BeD	Berks channery silt loam, 15 to 25 percent slopes	Berks	100	1.88	Well drained	Not prime farmland	3	0.32
HhB	Hartleton channery silt loam, 3 to 8 percent slopes	Hartleton	75	0.99	Well drained	Farmland of statewide importance	3	0.24
WkE	Weikert and Klinesville shaly silt loams, 25 to 80 percent slopes	Weikert	55	0.36	Somewhat excessively drained	Not prime farmland	2	0.32
WkE	Weikert and Klinesville shaly silt loams, 25 to 80 percent slopes	Klinesville	35	0.23	Somewhat excessively drained	Not prime farmland	2	0.28