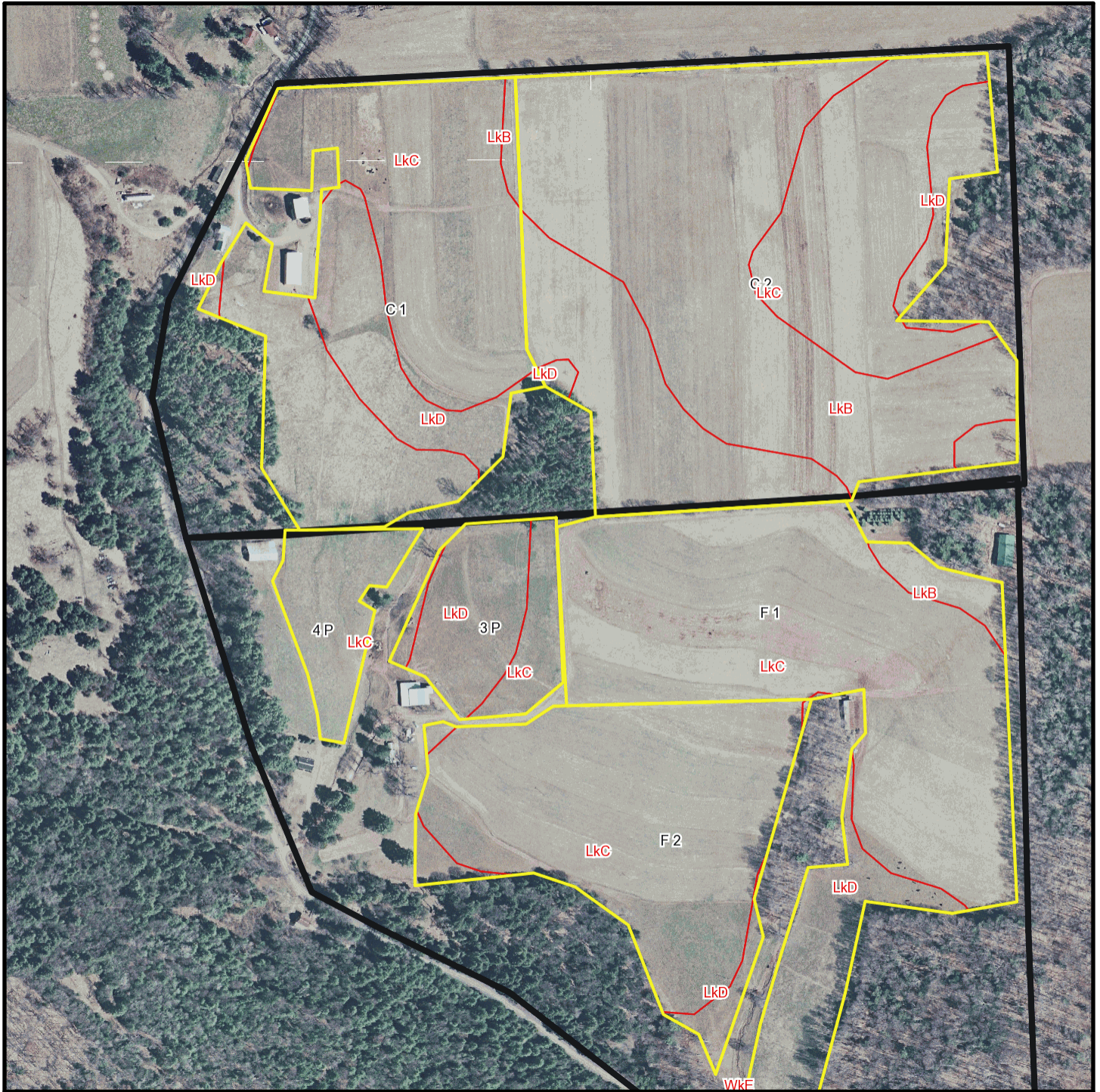


# Brown T 3340 and T 3341 Soil Map



\* 394.0 feet per inch



## Soil Acreages By Field

Field	Label	Musym	Muname	Acres	Drainage Class	Farmland Class	Kfact
3 P	3 P	LkC	Leck kill channery silt loam, 8 to 15 percent slopes	1.55	Well drained	Farmland of statewide importance	0.32
3 P	3 P	LkD	Leck kill channery silt loam, 15 to 25 percent slopes	2.83	Well drained	Not prime farmland	0.32
4 P	4 P	LkC	Leck kill channery silt loam, 8 to 15 percent slopes	2.75	Well drained	Farmland of statewide importance	0.32
C 1	C 1	LkB	Leck kill channery silt loam, 3 to 8 percent slopes	0.3	Well drained	All areas are prime farmland	0.32
C 1	C 1	LkC	Leck kill channery silt loam, 8 to 15 percent slopes	14.33	Well drained	Farmland of statewide importance	0.32
C 1	C 1	LkD	Leck kill channery silt loam, 15 to 25 percent slopes	3.56	Well drained	Not prime farmland	0.32
C 2	C 2	LkB	Leck kill channery silt loam, 3 to 8 percent slopes	16.82	Well drained	All areas are prime farmland	0.32
C 2	C 2	LkC	Leck kill channery silt loam, 8 to 15 percent slopes	13.83	Well drained	Farmland of statewide importance	0.32
C 2	C 2	LkD	Leck kill channery silt loam, 15 to 25 percent slopes	1.71	Well drained	Not prime farmland	0.32
F 1	F 1	LkB	Leck kill channery silt loam, 3 to 8 percent slopes	0.91	Well drained	All areas are prime farmland	0.32
F 1	F 1	LkC	Leck kill channery silt loam, 8 to 15 percent slopes	17.11	Well drained	Farmland of statewide importance	0.32
F 1	F 1	LkD	Leck kill channery silt loam, 15 to 25 percent slopes	3.56	Well drained	Not prime farmland	0.32
F 1	F 1	WkE	Weikert and Klinesville shaly silt loams, 25 to 80 percent slopes	0.26	Somewhat excessively drained	Not prime farmland	0.32
F 2	F 2	LkC	Leck kill channery silt loam, 8 to 15 percent slopes	12.49	Well drained	Farmland of statewide importance	0.32
F 2	F 2	LkD	Leck kill channery silt loam, 15 to 25 percent slopes	1.12	Well drained	Not prime farmland	0.32

## Soil Acreages For Farm

---

MUSYM	MUNAME	Drainage Class	Farmland Class	kfact	acres
LkB	Leck kill channery silt loam, 3 to 8 percent slopes	Well drained	All areas are prime farmland	0.32	18.03
LkC	Leck kill channery silt loam, 8 to 15 percent slopes	Well drained	Farmland of statewide importance	0.32	62.06
LkD	Leck kill channery silt loam, 15 to 25 percent slopes	Well drained	Not prime farmland	0.32	12.78
WkE	Weikert and Klinesville shaly silt loams, 25 to 80 percent slopes	Somewhat excessively drained	Not prime farmland	0.28	0.13
WkE	Weikert and Klinesville shaly silt loams, 25 to 80 percent slopes	Somewhat excessively drained	Not prime farmland	0.32	0.13