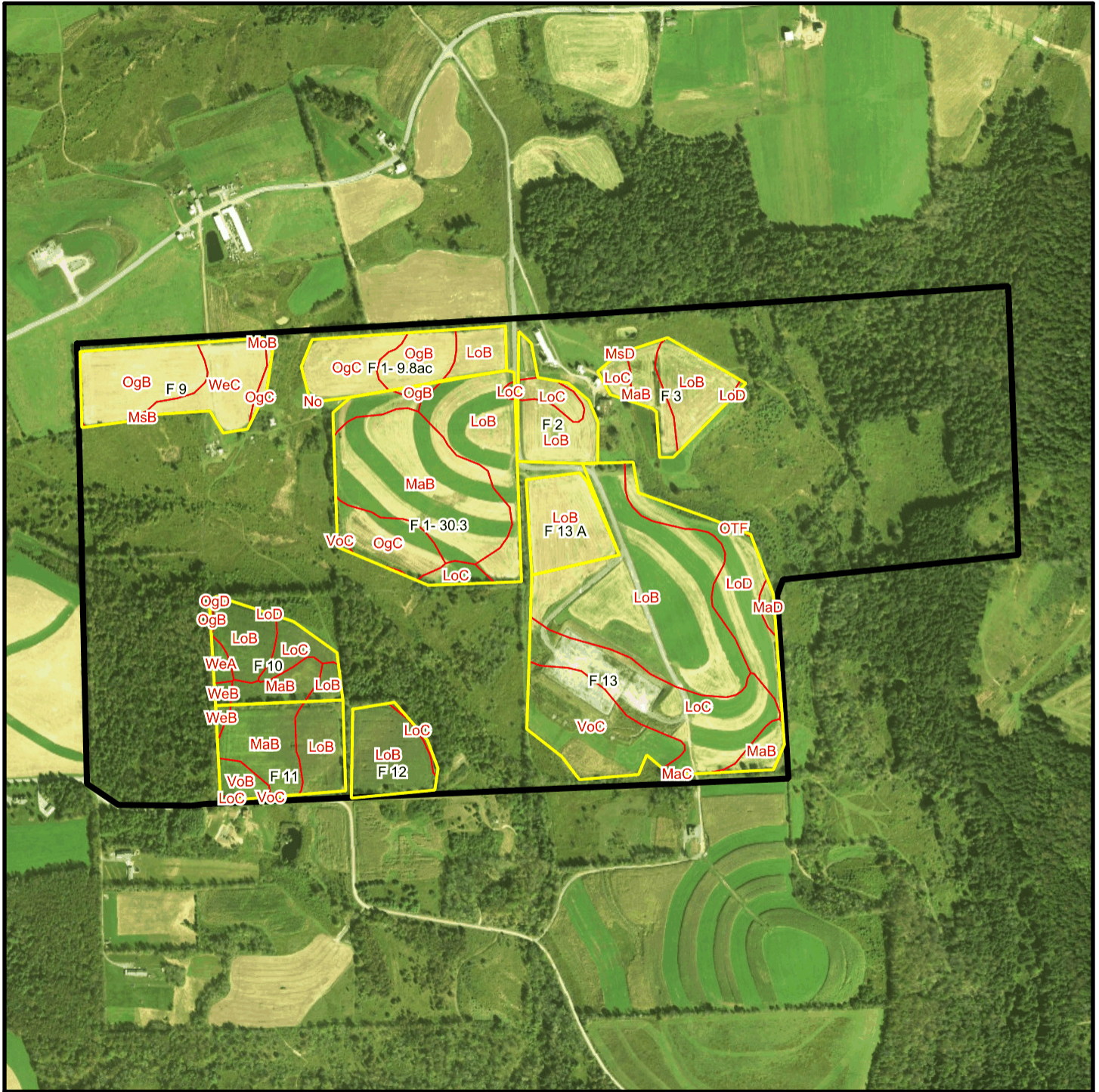
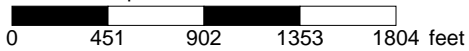


Bishcroft T 7316 Soil Map



* 902.0 feet per inch



Soil Acreages By Field

| Field | Label | Musym | Muname | Comp | % | Acres | Drainage Class | Farmland Class | Tfact | Kfact |
|-----------|-----------|-------|--|-----------|-----|-------|-------------------------|----------------------------------|-------|-------|
| F 1-30.3 | F 1-30.3 | LoB | Lordstown channery loam, 3 to 12 percent slopes | Lordstown | 100 | 8.36 | Well drained | Farmland of statewide importance | 3 | 0.43 |
| F 1-30.3 | F 1-30.3 | LoC | Lordstown channery loam, 12 to 20 percent slopes | Lordstown | 100 | 1.17 | Well drained | Farmland of statewide importance | 3 | 0.43 |
| F 1-30.3 | F 1-30.3 | MaB | Mardin channery silt loam, 3 to 8 percent slopes | Mardin | 90 | 14.94 | Moderately well drained | All areas are prime farmland | 3 | 0.32 |
| F 1-30.3 | F 1-30.3 | OgB | Oquaga channery loam, 3 to 12 percent slopes | Oquaga | 100 | 0.36 | Well drained | Farmland of statewide importance | 3 | 0.64 |
| F 1-30.3 | F 1-30.3 | OgC | Oquaga channery loam, 12 to 20 percent slopes | Oquaga | 100 | 5.72 | Well drained | Farmland of statewide importance | 3 | 0.64 |
| F 1-30.3 | F 1-30.3 | VoC | Volusia channery silt loam, 8 to 15 percent slopes | Volusia | 90 | 0.14 | Somewhat poorly drained | Farmland of statewide importance | 3 | 0.37 |
| F 1-9.8ac | F 1-9.8ac | LoB | Lordstown channery loam, 3 to 12 percent slopes | Lordstown | 100 | 2.16 | Well drained | Farmland of statewide importance | 3 | 0.43 |
| F 1-9.8ac | F 1-9.8ac | No | Norwich silt loam | Norwich | 97 | 0.01 | Very poorly drained | Not prime farmland | 3 | 0.37 |
| F 1-9.8ac | F 1-9.8ac | OgB | Oquaga channery loam, 3 to 12 percent slopes | Oquaga | 100 | 3.1 | Well drained | Farmland of statewide importance | 3 | 0.64 |
| F 1-9.8ac | F 1-9.8ac | OgC | Oquaga channery loam, 12 to 20 percent slopes | Oquaga | 100 | 4.33 | Well drained | Farmland of statewide importance | 3 | 0.64 |
| F 10 | F 10 | LoB | Lordstown channery loam, 3 to 12 percent slopes | Lordstown | 100 | 4.2 | Well drained | Farmland of statewide importance | 3 | 0.43 |

| Field | Label | Musym | Muname | Comp | % | Acres | Drainage Class | Farmland Class | Tfact | Kfact |
|-------|-------|-------|--|-----------|-----|--------|-------------------------|----------------------------------|-------|-------|
| F 10 | F 10 | LoC | Lordstown channery loam, 12 to 20 percent slopes | Lordstown | 100 | 1.99 | Well drained | Farmland of statewide importance | 3 | 0.43 |
| F 10 | F 10 | LoD | Lordstown channery loam, 20 to 30 percent slopes | Lordstown | 100 | 0.01 | Well drained | Not prime farmland | 3 | 0.43 |
| F 10 | F 10 | MaB | Mardin channery silt loam, 3 to 8 percent slopes | Mardin | 90 | 2.23 | Moderately well drained | All areas are prime farmland | 3 | 0.32 |
| F 10 | F 10 | OgB | Oquaga channery loam, 3 to 12 percent slopes | Oquaga | 100 | 0.08 | Well drained | Farmland of statewide importance | 3 | 0.64 |
| F 10 | F 10 | OgD | Oquaga channery loam, 20 to 30 percent slopes | Oquaga | 100 | 0.04 | Well drained | Not prime farmland | 3 | 0.64 |
| F 10 | F 10 | WeA | Wellsboro channery loam, 0 to 3 percent slopes | Wellsboro | 85 | 0.59 | Moderately well drained | All areas are prime farmland | 3 | 0.32 |
| F 10 | F 10 | WeB | Wellsboro channery loam, 3 to 8 percent slopes | Wellsboro | 80 | 0.34 | Moderately well drained | All areas are prime farmland | 3 | 0.32 |
| F 11 | F 11 | LoB | Lordstown channery loam, 3 to 12 percent slopes | Lordstown | 100 | 3.72 | Well drained | Farmland of statewide importance | 3 | 0.43 |
| F 11 | F 11 | LoC | Lordstown channery loam, 12 to 20 percent slopes | Lordstown | 100 | 0.08 | Well drained | Farmland of statewide importance | 3 | 0.43 |
| F 11 | F 11 | MaB | Mardin channery silt loam, 3 to 8 percent slopes | Mardin | 90 | 5.08 | Moderately well drained | All areas are prime farmland | 3 | 0.32 |
| F 11 | F 11 | VoB | Volusia channery silt loam, 3 to 8 percent slopes | Volusia | 90 | 1.3 | Somewhat poorly drained | Farmland of statewide importance | 3 | 0.37 |
| F 11 | F 11 | VoC | Volusia channery silt loam, 8 to 15 percent slopes | Volusia | 90 | < 0.01 | Somewhat poorly drained | Farmland of statewide importance | 3 | 0.37 |
| F 11 | F 11 | WeB | Wellsboro channery loam, 3 to 8 percent slopes | Wellsboro | 80 | 0.26 | Moderately well drained | All areas are prime farmland | 3 | 0.32 |

| Field | Label | Musym | Muname | Comp | % | Acres | Drainage Class | Farmland Class | Tfact | Kfact |
|--------|--------|-------|--|-----------|-----|-------|-------------------------|----------------------------------|-------|-------|
| F 12 | F 12 | LoB | Lordstown channery loam, 3 to 12 percent slopes | Lordstown | 100 | 5.55 | Well drained | Farmland of statewide importance | 3 | 0.43 |
| F 12 | F 12 | LoC | Lordstown channery loam, 12 to 20 percent slopes | Lordstown | 100 | 0.23 | Well drained | Farmland of statewide importance | 3 | 0.43 |
| F 13 | F 13 | LoB | Lordstown channery loam, 3 to 12 percent slopes | Lordstown | 100 | 22.72 | Well drained | Farmland of statewide importance | 3 | 0.43 |
| F 13 | F 13 | LoC | Lordstown channery loam, 12 to 20 percent slopes | Lordstown | 100 | 11.81 | Well drained | Farmland of statewide importance | 3 | 0.43 |
| F 13 | F 13 | LoD | Lordstown channery loam, 20 to 30 percent slopes | Lordstown | 100 | 7.34 | Well drained | Not prime farmland | 3 | 0.43 |
| F 13 | F 13 | MaB | Mardin channery silt loam, 3 to 8 percent slopes | Mardin | 90 | 1.44 | Moderately well drained | All areas are prime farmland | 3 | 0.32 |
| F 13 | F 13 | MaC | Mardin channery silt loam, 8 to 15 percent slopes | Mardin | 90 | 0.03 | Moderately well drained | Farmland of statewide importance | 3 | 0.32 |
| F 13 | F 13 | MaD | Mardin channery silt loam, 15 to 25 percent slopes | Mardin | 85 | 0.5 | Moderately well drained | Not prime farmland | 3 | 0.32 |
| F 13 | F 13 | OTF | Oquaga and Lordstown soils, very steep | Oquaga | 48 | 0.01 | Well drained | Not prime farmland | 3 | 0.37 |
| F 13 | F 13 | OTF | Oquaga and Lordstown soils, very steep | Lordstown | 22 | 0.01 | Well drained | Not prime farmland | 3 | 0.28 |
| F 13 | F 13 | VoC | Volusia channery silt loam, 8 to 15 percent slopes | Volusia | 90 | 9.31 | Somewhat poorly drained | Farmland of statewide importance | 3 | 0.37 |
| F 13 A | F 13 A | LoB | Lordstown channery loam, 3 to 12 percent slopes | Lordstown | 100 | 5.93 | Well drained | Farmland of statewide importance | 3 | 0.43 |

| Field | Label | Musym | Muname | Comp | % | Acres | Drainage Class | Farmland Class | Tfact | Kfact |
|-------|-------|-------|---|-----------|-----|--------|-------------------------|----------------------------------|-------|-------|
| F 2 | F 2 | LoB | Lordstown channery loam, 3 to 12 percent slopes | Lordstown | 100 | 4.61 | Well drained | Farmland of statewide importance | 3 | 0.43 |
| F 2 | F 2 | LoC | Lordstown channery loam, 12 to 20 percent slopes | Lordstown | 100 | 1.38 | Well drained | Farmland of statewide importance | 3 | 0.43 |
| F 3 | F 3 | LoB | Lordstown channery loam, 3 to 12 percent slopes | Lordstown | 100 | 4.35 | Well drained | Farmland of statewide importance | 3 | 0.43 |
| F 3 | F 3 | LoC | Lordstown channery loam, 12 to 20 percent slopes | Lordstown | 100 | 0.91 | Well drained | Farmland of statewide importance | 3 | 0.43 |
| F 3 | F 3 | LoD | Lordstown channery loam, 20 to 30 percent slopes | Lordstown | 100 | 0.08 | Well drained | Not prime farmland | 3 | 0.43 |
| F 3 | F 3 | MaB | Mardin channery silt loam, 3 to 8 percent slopes | Mardin | 90 | 2.45 | Moderately well drained | All areas are prime farmland | 3 | 0.32 |
| F 3 | F 3 | MsD | Morris very stony silt loam, 8 to 25 percent slopes | Morris | 80 | < 0.01 | Somewhat poorly drained | Not prime farmland | 3 | 0.43 |
| F 9 | F 9 | MoB | Morris gravelly silt loam, 3 to 8 percent slopes | Morris | 77 | 0.08 | Somewhat poorly drained | Farmland of statewide importance | 3 | 0.55 |
| F 9 | F 9 | MsB | Morris very stony silt loam, 0 to 8 percent slopes | Morris | 80 | 0.07 | Somewhat poorly drained | Not prime farmland | 3 | 0.32 |
| F 9 | F 9 | OgB | Oquaga channery loam, 3 to 12 percent slopes | Oquaga | 100 | 6.97 | Well drained | Farmland of statewide importance | 3 | 0.64 |
| F 9 | F 9 | OgC | Oquaga channery loam, 12 to 20 percent slopes | Oquaga | 100 | 0.39 | Well drained | Farmland of statewide importance | 3 | 0.64 |
| F 9 | F 9 | WeC | Wellsboro channery loam, 8 to 15 percent slopes | Wellsboro | 85 | 4.92 | Moderately well drained | Farmland of statewide importance | 3 | 0.32 |

Soil Acreages For Farm

| Musym | Muname | Comp | % | Acres | Drainage Class | Farmland Class | Tfact | Kfact |
|-------|---|-----------|-----|-------|-------------------------|----------------------------------|-------|-------|
| LoB | Lordstown channery loam, 3 to 12 percent slopes | Lordstown | 100 | 61.6 | Well drained | Farmland of statewide importance | 3 | 0.43 |
| No | Norwich silt loam | Norwich | 97 | 0.01 | Very poorly drained | Not prime farmland | 3 | 0.37 |
| OgB | Oquaga channery loam, 3 to 12 percent slopes | Oquaga | 100 | 10.51 | Well drained | Farmland of statewide importance | 3 | 0.64 |
| OgC | Oquaga channery loam, 12 to 20 percent slopes | Oquaga | 100 | 10.44 | Well drained | Farmland of statewide importance | 3 | 0.64 |
| LoC | Lordstown channery loam, 12 to 20 percent slopes | Lordstown | 100 | 17.57 | Well drained | Farmland of statewide importance | 3 | 0.43 |
| MaB | Mardin channery silt loam, 3 to 8 percent slopes | Mardin | 90 | 26.14 | Moderately well drained | All areas are prime farmland | 3 | 0.32 |
| VoC | Volusia channery silt loam, 8 to 15 percent slopes | Volusia | 90 | 9.45 | Somewhat poorly drained | Farmland of statewide importance | 3 | 0.37 |
| LoD | Lordstown channery loam, 20 to 30 percent slopes | Lordstown | 100 | 7.43 | Well drained | Not prime farmland | 3 | 0.43 |
| MsD | Morris very stony silt loam, 8 to 25 percent slopes | Morris | 80 | 0 | Somewhat poorly drained | Not prime farmland | 3 | 0.43 |
| MaC | Mardin channery silt loam, 8 to 15 percent slopes | Mardin | 90 | 0.03 | Moderately well drained | Farmland of statewide importance | 3 | 0.32 |
| MaD | Mardin channery silt loam, 15 to 25 percent slopes | Mardin | 85 | 0.5 | Moderately well drained | Not prime farmland | 3 | 0.32 |
| OTF | Oquaga and Lordstown soils, very steep | Oquaga | 48 | 0.01 | Well drained | Not prime farmland | 3 | 0.37 |
| OTF | Oquaga and Lordstown soils, very steep | Lordstown | 22 | 0.01 | Well drained | Not prime farmland | 3 | 0.28 |

| Musym | Muname | Comp | % | Acres | Drainage Class | Farmland Class | Tfact | Kfact |
|-------|--|-----------|-----|-------|-------------------------|----------------------------------|-------|-------|
| MoB | Morris gravelly silt loam, 3 to 8 percent slopes | Morris | 77 | 0.08 | Somewhat poorly drained | Farmland of statewide importance | 3 | 0.55 |
| MsB | Morris very stony silt loam, 0 to 8 percent slopes | Morris | 80 | 0.07 | Somewhat poorly drained | Not prime farmland | 3 | 0.32 |
| WeC | Wellsboro channery loam, 8 to 15 percent slopes | Wellsboro | 85 | 4.92 | Moderately well drained | Farmland of statewide importance | 3 | 0.32 |
| OgD | Oquaga channery loam, 20 to 30 percent slopes | Oquaga | 100 | 0.04 | Well drained | Not prime farmland | 3 | 0.64 |
| WeA | Wellsboro channery loam, 0 to 3 percent slopes | Wellsboro | 85 | 0.59 | Moderately well drained | All areas are prime farmland | 3 | 0.32 |
| WeB | Wellsboro channery loam, 3 to 8 percent slopes | Wellsboro | 80 | 0.6 | Moderately well drained | All areas are prime farmland | 3 | 0.32 |
| VoB | Volusia channery silt loam, 3 to 8 percent slopes | Volusia | 90 | 1.3 | Somewhat poorly drained | Farmland of statewide importance | 3 | 0.37 |