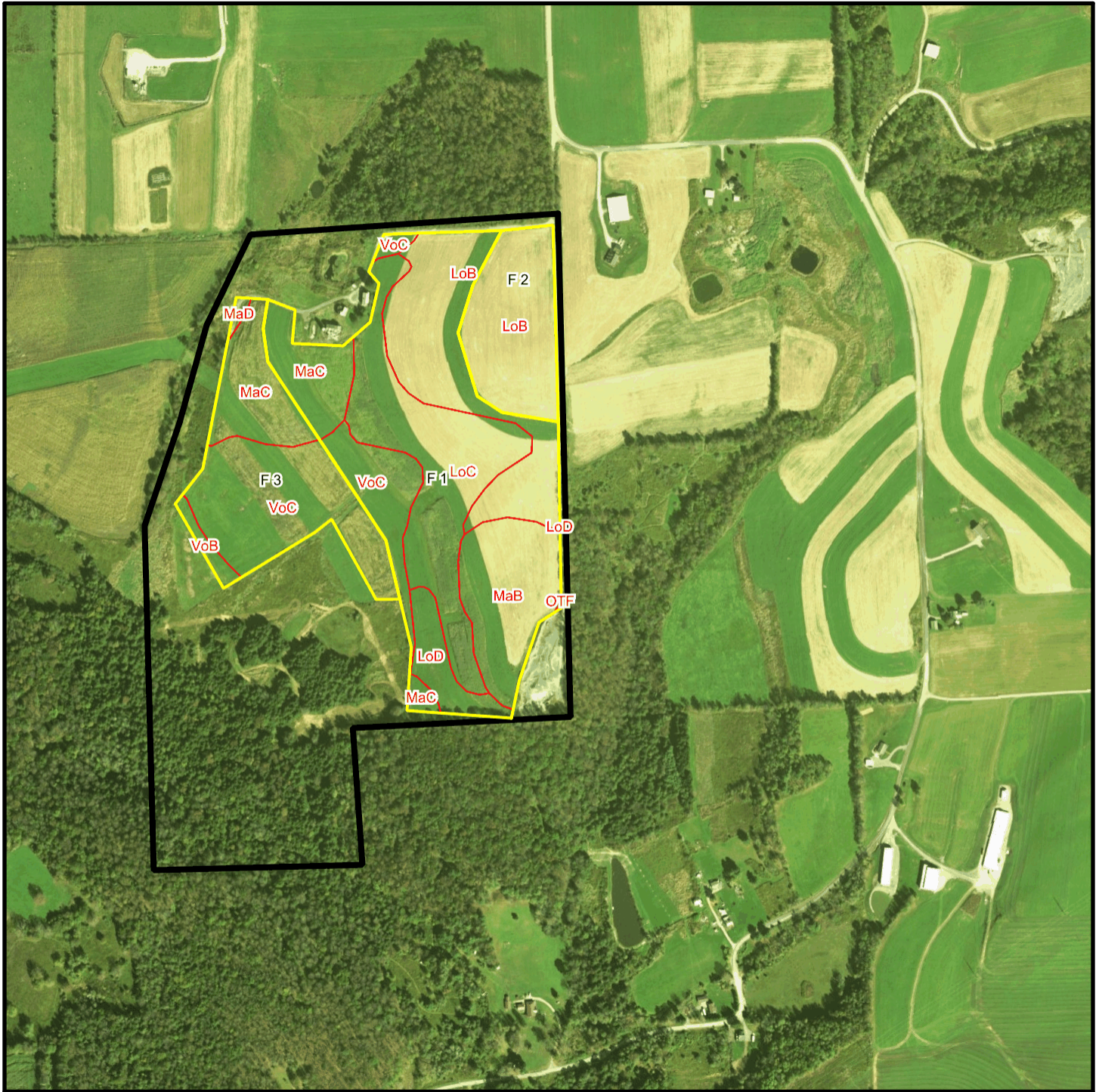


Bishcroft T 61 Soil Map



* 694.0 feet per inch



Soil Acreages By Field

Field	Label	Musym	Muname	Comp	%	Acres	Drainage Class	Farmland Class	Tfact	Kfact
F 1	F 1	LoB	Lordstown channery loam, 3 to 12 percent slopes	Lordstown	100	10.47	Well drained	Farmland of statewide importance	3	0.43
F 1	F 1	LoC	Lordstown channery loam, 12 to 20 percent slopes	Lordstown	100	12.35	Well drained	Farmland of statewide importance	3	0.43
F 1	F 1	LoD	Lordstown channery loam, 20 to 30 percent slopes	Lordstown	100	2.48	Well drained	Not prime farmland	3	0.43
F 1	F 1	MaB	Mardin channery silt loam, 3 to 8 percent slopes	Mardin	90	7.06	Moderately well drained	All areas are prime farmland	3	0.32
F 1	F 1	MaC	Mardin channery silt loam, 8 to 15 percent slopes	Mardin	90	4	Moderately well drained	Farmland of statewide importance	3	0.32
F 1	F 1	OTF	Oquaga and Lordstown soils, very steep	Oquaga	48	0.01	Well drained	Not prime farmland	3	0.37
F 1	F 1	OTF	Oquaga and Lordstown soils, very steep	Lordstown	22	0.01	Well drained	Not prime farmland	3	0.28
F 1	F 1	VoC	Volusia channery silt loam, 8 to 15 percent slopes	Volusia	90	4.11	Somewhat poorly drained	Farmland of statewide importance	3	0.37
F 2	F 2	LoB	Lordstown channery loam, 3 to 12 percent slopes	Lordstown	100	7.91	Well drained	Farmland of statewide importance	3	0.43
F 3	F 3	MaC	Mardin channery silt loam, 8 to 15 percent slopes	Mardin	90	4.3	Moderately well drained	Farmland of statewide importance	3	0.32
F 3	F 3	MaD	Mardin channery silt loam, 15 to 25 percent slopes	Mardin	85	0.22	Moderately well drained	Not prime farmland	3	0.32
F 3	F 3	VoB	Volusia channery silt loam, 3 to 8 percent slopes	Volusia	90	0.67	Somewhat poorly drained	Farmland of statewide importance	3	0.37

Field	Label	Musym	Muname	Comp	%	Acres	Drainage Class	Farmland Class	Tfact	Kfact
F 3	F 3	VoC	Volusia channery silt loam, 8 to 15 percent slopes	Volusia	90	9.76	Somewhat poorly drained	Farmland of statewide importance	3	0.37

Soil Acreages For Farm

Musym	Muname	Comp	%	Acres	Drainage Class	Farmland Class	Tfact	Kfact
LoB	Lordstown channery loam, 3 to 12 percent slopes	Lordstown	100	18.38	Well drained	Farmland of statewide importance	3	0.43
LoC	Lordstown channery loam, 12 to 20 percent slopes	Lordstown	100	12.35	Well drained	Farmland of statewide importance	3	0.43
LoD	Lordstown channery loam, 20 to 30 percent slopes	Lordstown	100	2.48	Well drained	Not prime farmland	3	0.43
MaB	Mardin channery silt loam, 3 to 8 percent slopes	Mardin	90	7.06	Moderately well drained	All areas are prime farmland	3	0.32
MaC	Mardin channery silt loam, 8 to 15 percent slopes	Mardin	90	8.3	Moderately well drained	Farmland of statewide importance	3	0.32
OTF	Oquaga and Lordstown soils, very steep	Oquaga	48	0.01	Well drained	Not prime farmland	3	0.37
OTF	Oquaga and Lordstown soils, very steep	Lordstown	22	0.01	Well drained	Not prime farmland	3	0.28
VoC	Volusia channery silt loam, 8 to 15 percent slopes	Volusia	90	13.87	Somewhat poorly drained	Farmland of statewide importance	3	0.37
MaD	Mardin channery silt loam, 15 to 25 percent slopes	Mardin	85	0.22	Moderately well drained	Not prime farmland	3	0.32
VoB	Volusia channery silt loam, 3 to 8 percent slopes	Volusia	90	0.67	Somewhat poorly drained	Farmland of statewide importance	3	0.37