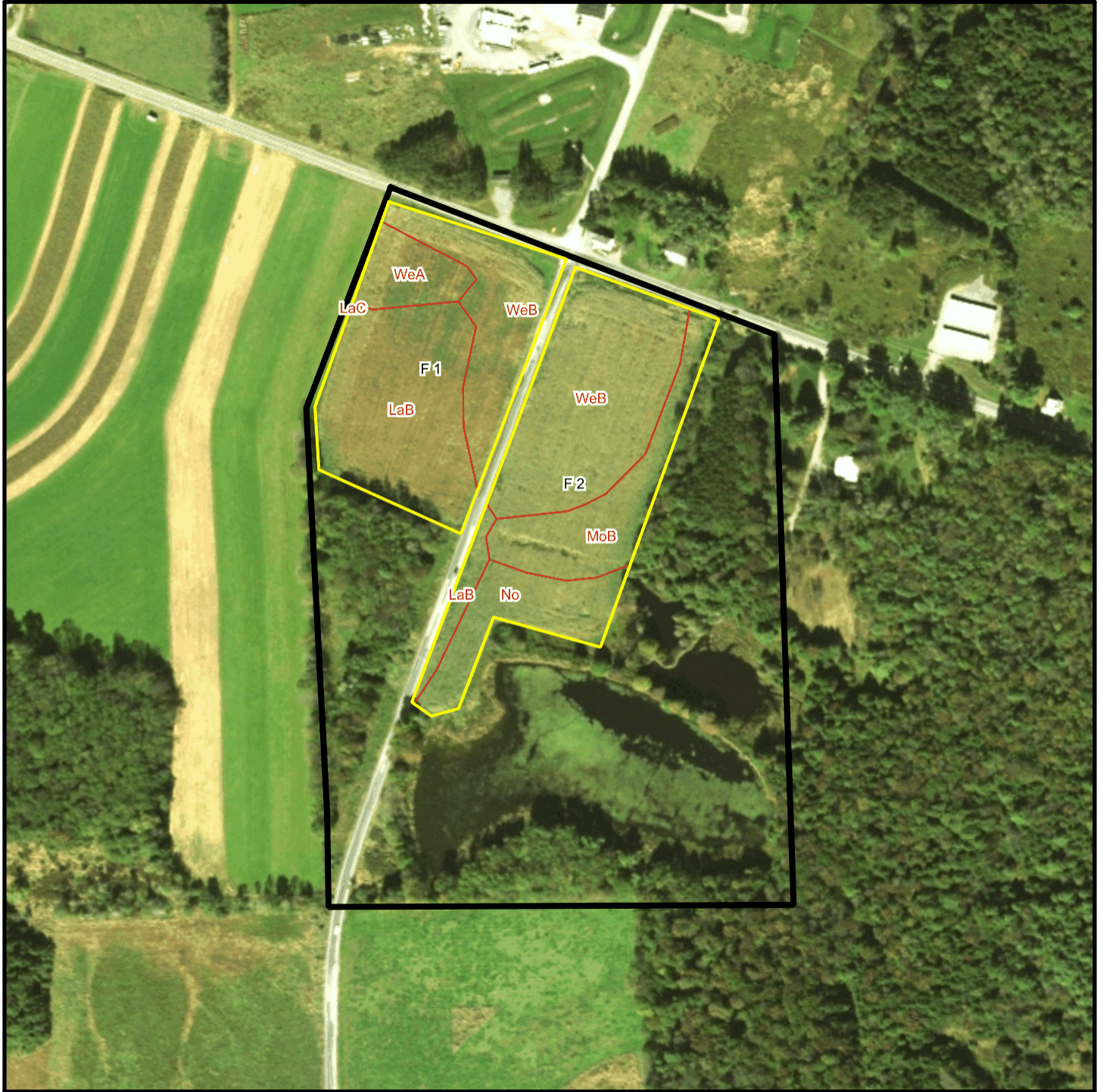
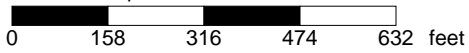


Bishcroft T 5658 Soil Map



* 316.0 feet per inch



Soil Acreages By Field

Field	Label	Musym	Muname	Comp	%	Acres	Drainage Class	Farmland Class	Tfact	Kfact
F 1	F 1	LaB	Lackawanna channery loam, 3 to 12 percent slopes	Lackawanna	100	3.05	Well drained	All areas are prime farmland	3	0.64
F 1	F 1	LaC	Lackawanna channery loam, 12 to 20 percent slopes	Lackawanna	100	< 0.01	Well drained	Farmland of statewide importance	3	0.64
F 1	F 1	WeA	Wellsboro channery loam, 0 to 3 percent slopes	Wellsboro	85	0.71	Moderately well drained	All areas are prime farmland	3	0.32
F 1	F 1	WeB	Wellsboro channery loam, 3 to 8 percent slopes	Wellsboro	80	1.79	Moderately well drained	All areas are prime farmland	3	0.32
F 2	F 2	LaB	Lackawanna channery loam, 3 to 12 percent slopes	Lackawanna	100	0.33	Well drained	All areas are prime farmland	3	0.64
F 2	F 2	MoB	Morris gravelly silt loam, 3 to 8 percent slopes	Morris	77	1.62	Somewhat poorly drained	Farmland of statewide importance	3	0.55
F 2	F 2	No	Norwich silt loam	Norwich	97	1.28	Very poorly drained	Not prime farmland	3	0.37
F 2	F 2	WeB	Wellsboro channery loam, 3 to 8 percent slopes	Wellsboro	80	3.24	Moderately well drained	All areas are prime farmland	3	0.32

Soil Acreages For Farm

Musym	Muname	Comp	%	Acres	Drainage Class	Farmland Class	Tfact	Kfact
LaB	Lackawanna channery loam, 3 to 12 percent slopes	Lackawanna	100	3.38	Well drained	All areas are prime farmland	3	0.64
LaC	Lackawanna channery loam, 12 to 20 percent slopes	Lackawanna	100	0	Well drained	Farmland of statewide importance	3	0.64
WeA	Wellsboro channery loam, 0 to 3 percent slopes	Wellsboro	85	0.71	Moderately well drained	All areas are prime farmland	3	0.32
WeB	Wellsboro channery loam, 3 to 8 percent slopes	Wellsboro	80	5.03	Moderately well drained	All areas are prime farmland	3	0.32

Musym	Muname	Comp	%	Acres	Drainage Class	Farmland Class	Tfact	Kfact
MoB	Morris gravelly silt loam, 3 to 8 percent slopes	Morris	77	1.62	Somewhat poorly drained	Farmland of statewide importance	3	0.55
No	Norwich silt loam	Norwich	97	1.28	Very poorly drained	Not prime farmland	3	0.37