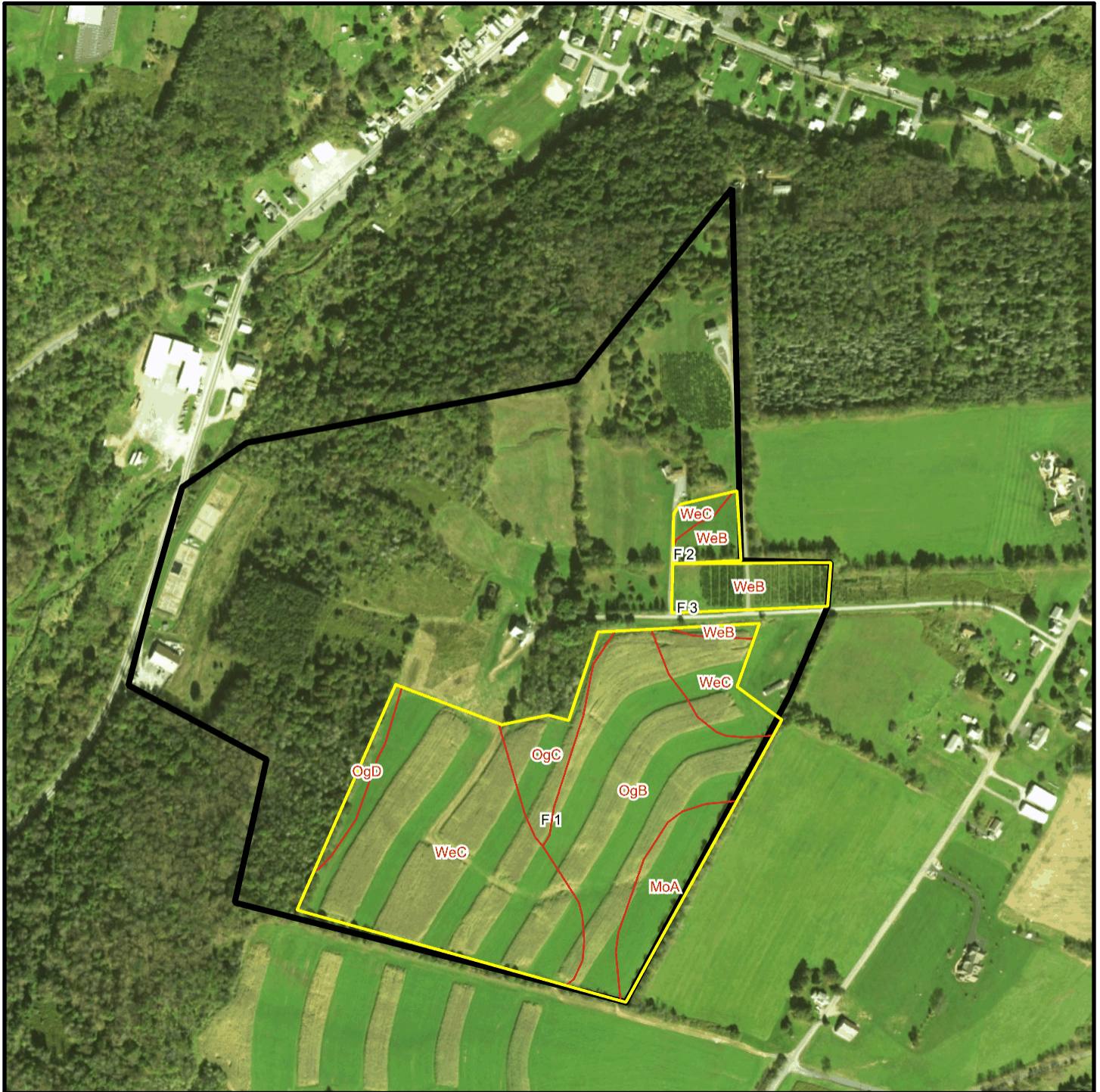
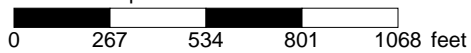


# Bishcroft T 55 Soil Map



\* 534.0 feet per inch



## Soil Acreages By Field

Field	Label	Musym	Muname	Comp	%	Acres	Drainage Class	Farmland Class	Tfact	Kfact
F 1	F 1	MoA	Morris gravelly silt loam, 0 to 3 percent slopes	Morris	70	2.76	Somewhat poorly drained	Farmland of statewide importance	3	0.55
F 1	F 1	OgB	Oquaga channery loam, 3 to 12 percent slopes	Oquaga	100	10.83	Well drained	Farmland of statewide importance	3	0.64
F 1	F 1	OgC	Oquaga channery loam, 12 to 20 percent slopes	Oquaga	100	2.09	Well drained	Farmland of statewide importance	3	0.64
F 1	F 1	OgD	Oquaga channery loam, 20 to 30 percent slopes	Oquaga	100	0.79	Well drained	Not prime farmland	3	0.64
F 1	F 1	WeB	Wellsboro channery loam, 3 to 8 percent slopes	Wellsboro	80	0.27	Moderately well drained	All areas are prime farmland	3	0.32
F 1	F 1	WeC	Wellsboro channery loam, 8 to 15 percent slopes	Wellsboro	85	17.06	Moderately well drained	Farmland of statewide importance	3	0.32
F 2	F 2	WeB	Wellsboro channery loam, 3 to 8 percent slopes	Wellsboro	80	0.91	Moderately well drained	All areas are prime farmland	3	0.32
F 2	F 2	WeC	Wellsboro channery loam, 8 to 15 percent slopes	Wellsboro	85	0.38	Moderately well drained	Farmland of statewide importance	3	0.32
F 3	F 3	WeB	Wellsboro channery loam, 3 to 8 percent slopes	Wellsboro	80	2.25	Moderately well drained	All areas are prime farmland	3	0.32

## Soil Acreages For Farm

Musym	Muname	Comp	%	Acres	Drainage Class	Farmland Class	Tfact	Kfact
MoA	Morris gravelly silt loam, 0 to 3 percent slopes	Morris	70	2.76	Somewhat poorly drained	Farmland of statewide importance	3	0.55
OgB	Oquaga channery loam, 3 to 12 percent slopes	Oquaga	100	10.83	Well drained	Farmland of statewide importance	3	0.64

Musym	Muname	Comp	%	Acres	Drainage Class	Farmland Class	Tfact	Kfact
OgC	Oquaga channery loam, 12 to 20 percent slopes	Oquaga	100	2.09	Well drained	Farmland of statewide importance	3	0.64
OgD	Oquaga channery loam, 20 to 30 percent slopes	Oquaga	100	0.79	Well drained	Not prime farmland	3	0.64
WeB	Wellsboro channery loam, 3 to 8 percent slopes	Wellsboro	80	3.43	Moderately well drained	All areas are prime farmland	3	0.32
WeC	Wellsboro channery loam, 8 to 15 percent slopes	Wellsboro	85	17.44	Moderately well drained	Farmland of statewide importance	3	0.32