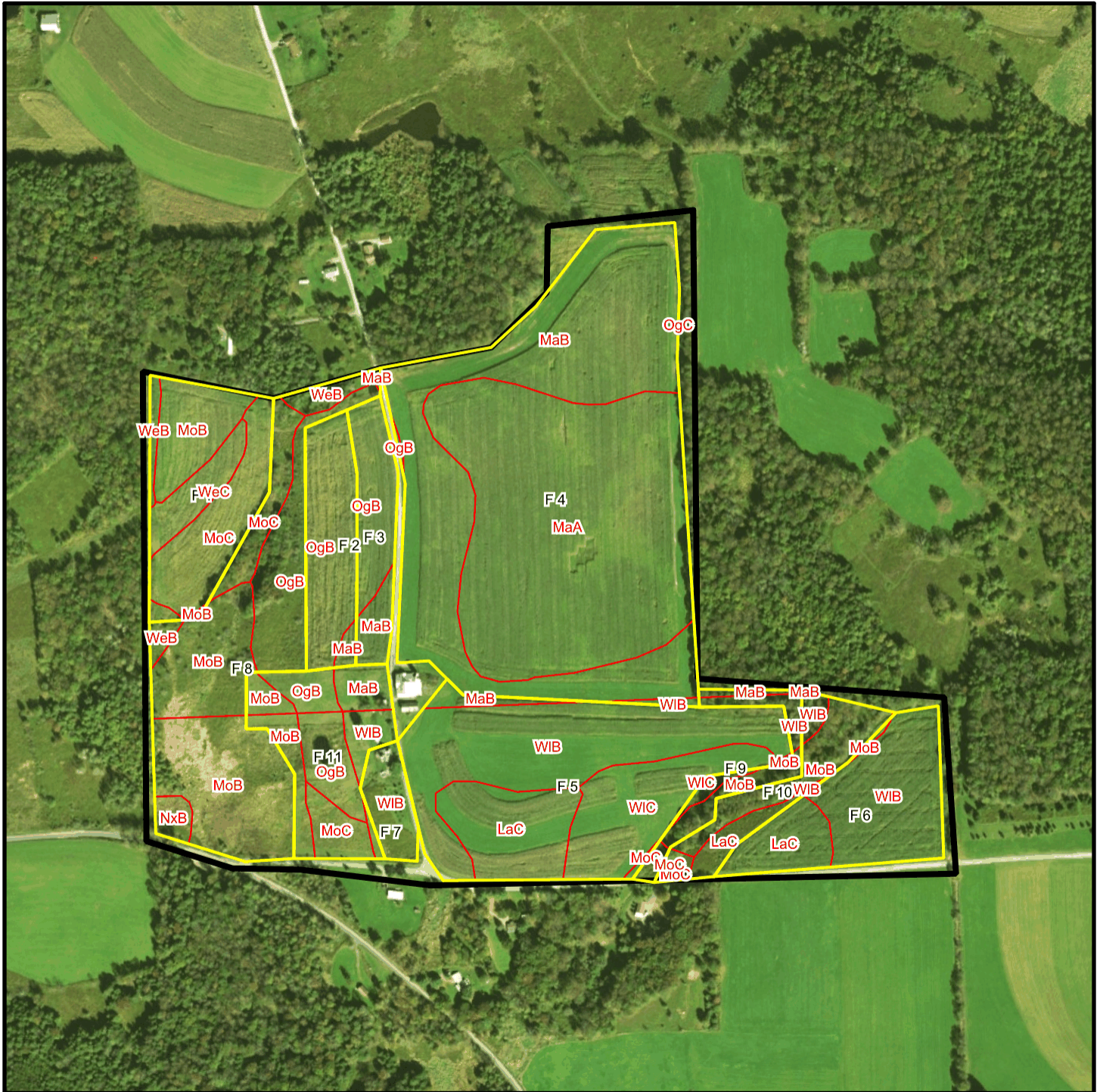


Bishcroft T 3628 Soil Map



* 534.0 feet per inch



Soil Acreages By Field

Field	Label	Musym	Muname	Comp	%	Acres	Drainage Class	Farmland Class	Tfact	Kfact
F 1	F 1	MoB	Morris gravelly silt loam, 3 to 8 percent slopes	Morris	77	2.23	Somewhat poorly drained	Farmland of statewide importance	3	0.55
F 1	F 1	MoC	Morris gravelly silt loam, 8 to 15 percent slopes	Morris	80	3.3	Somewhat poorly drained	Farmland of statewide importance	3	0.55
F 1	F 1	WeB	Wellsboro channery loam, 3 to 8 percent slopes	Wellsboro	80	0.44	Moderately well drained	All areas are prime farmland	3	0.32
F 1	F 1	WeC	Wellsboro channery loam, 8 to 15 percent slopes	Wellsboro	85	1.34	Moderately well drained	Farmland of statewide importance	3	0.32
F 10	F 10	LaC	Lackawanna channery silt loam, 8 to 15 percent slopes	Lackawanna	90	0.75	Well drained	Farmland of statewide importance	3	0.32
F 10	F 10	MoB	Morris channery silt loam, 3 to 8 percent slopes	Morris	80	2.14	Somewhat poorly drained	Farmland of statewide importance	3	0.55
F 10	F 10	MoC	Morris channery silt loam, 8 to 15 percent slopes	Morris	80	0.26	Somewhat poorly drained	Farmland of statewide importance	3	0.55
F 10	F 10	WIB	Wellsboro channery silt loam, 3 to 8 percent slopes	Wellsboro	90	0.36	Moderately well drained	All areas are prime farmland	3	0.32
F 10	F 10	MaB	Mardin channery silt loam, 3 to 8 percent slopes	Mardin	90	0.01	Moderately well drained	All areas are prime farmland	3	0.32
F 11	F 11	MoB	Morris channery silt loam, 3 to 8 percent slopes	Morris	80	1.36	Somewhat poorly drained	Farmland of statewide importance	3	0.55
F 11	F 11	MoC	Morris channery silt loam, 8 to 15 percent slopes	Morris	80	0.96	Somewhat poorly drained	Farmland of statewide importance	3	0.55
F 11	F 11	OgB	Oquaga channery loam, 3 to 8 percent slopes	Oquaga	85	2.16	Well drained	Farmland of statewide importance	3	0.37

Field	Label	Musym	Muname	Comp	%	Acres	Drainage Class	Farmland Class	Tfact	Kfact
F 11	F 11	WIB	Wellsboro channery silt loam, 3 to 8 percent slopes	Wellsboro	90	0.82	Moderately well drained	All areas are prime farmland	3	0.32
F 11	F 11	MaB	Mardin channery silt loam, 3 to 8 percent slopes	Mardin	90	0.76	Moderately well drained	All areas are prime farmland	3	0.32
F 2	F 2	MaB	Mardin channery silt loam, 3 to 8 percent slopes	Mardin	90	0.21	Moderately well drained	All areas are prime farmland	3	0.32
F 2	F 2	OgB	Oquaga channery loam, 3 to 12 percent slopes	Oquaga	100	3.66	Well drained	Farmland of statewide importance	3	0.64
F 3	F 3	MaB	Mardin channery silt loam, 3 to 8 percent slopes	Mardin	90	0.77	Moderately well drained	All areas are prime farmland	3	0.32
F 3	F 3	OgB	Oquaga channery loam, 3 to 12 percent slopes	Oquaga	100	2.28	Well drained	Farmland of statewide importance	3	0.64
F 4	F 4	WIB	Wellsboro channery silt loam, 3 to 8 percent slopes	Wellsboro	90	0.15	Moderately well drained	All areas are prime farmland	3	0.32
F 4	F 4	MaA	Mardin channery silt loam, 0 to 3 percent slopes	Mardin	85	19.48	Moderately well drained	All areas are prime farmland	3	0.32
F 4	F 4	MaB	Mardin channery silt loam, 3 to 8 percent slopes	Mardin	90	16.03	Moderately well drained	All areas are prime farmland	3	0.32
F 4	F 4	OgB	Oquaga channery loam, 3 to 12 percent slopes	Oquaga	100	0.05	Well drained	Farmland of statewide importance	3	0.64
F 4	F 4	OgC	Oquaga channery loam, 12 to 20 percent slopes	Oquaga	100	< 0.01	Well drained	Farmland of statewide importance	3	0.64
F 5	F 5	LaC	Lackawanna channery silt loam, 8 to 15 percent slopes	Lackawanna	90	3.36	Well drained	Farmland of statewide importance	3	0.32
F 5	F 5	MoB	Morris channery silt loam, 3 to 8 percent slopes	Morris	80	0.05	Somewhat poorly drained	Farmland of statewide importance	3	0.55

Field	Label	Musym	Muname	Comp	%	Acres	Drainage Class	Farmland Class	Tfact	Kfact
F 5	F 5	MoC	Morris channery silt loam, 8 to 15 percent slopes	Morris	80	0.07	Somewhat poorly drained	Farmland of statewide importance	3	0.55
F 5	F 5	WIB	Wellsboro channery silt loam, 3 to 8 percent slopes	Wellsboro	90	8.7	Moderately well drained	All areas are prime farmland	3	0.32
F 5	F 5	WIC	Wellsboro channery silt loam, 8 to 15 percent slopes	Wellsboro	90	4.05	Moderately well drained	Farmland of statewide importance	3	0.32
F 5	F 5	MaB	Mardin channery silt loam, 3 to 8 percent slopes	Mardin	90	0.45	Moderately well drained	All areas are prime farmland	3	0.32
F 6	F 6	LaC	Lackawanna channery silt loam, 8 to 15 percent slopes	Lackawanna	90	1.71	Well drained	Farmland of statewide importance	3	0.32
F 6	F 6	MoB	Morris channery silt loam, 3 to 8 percent slopes	Morris	80	0.06	Somewhat poorly drained	Farmland of statewide importance	3	0.55
F 6	F 6	WIB	Wellsboro channery silt loam, 3 to 8 percent slopes	Wellsboro	90	4.62	Moderately well drained	All areas are prime farmland	3	0.32
F 7	F 7	WIB	Wellsboro channery silt loam, 3 to 8 percent slopes	Wellsboro	90	1.46	Moderately well drained	All areas are prime farmland	3	0.32
F 8	F 8	MoB	Morris channery silt loam, 3 to 8 percent slopes	Morris	80	8.18	Somewhat poorly drained	Farmland of statewide importance	3	0.55
F 8	F 8	NxB	Norwich very stony silt loam, 0 to 8 percent slopes	Norwich	100	0.46	Poorly drained	Not prime farmland	3	0.43
F 8	F 8	MaB	Mardin channery silt loam, 3 to 8 percent slopes	Mardin	90	0.04	Moderately well drained	All areas are prime farmland	3	0.32
F 8	F 8	MoC	Morris gravelly silt loam, 8 to 15 percent slopes	Morris	80	1.39	Somewhat poorly drained	Farmland of statewide importance	3	0.55
F 8	F 8	OgB	Oquaga channery loam, 3 to 12 percent slopes	Oquaga	100	3.06	Well drained	Farmland of statewide importance	3	0.64

Field	Label	Musym	Muname	Comp	%	Acres	Drainage Class	Farmland Class	Tfact	Kfact
F 8	F 8	WeB	Wellsboro channery loam, 3 to 8 percent slopes	Wellsboro	80	0.83	Moderately well drained	All areas are prime farmland	3	0.32
F 9	F 9	MoB	Morris channery silt loam, 3 to 8 percent slopes	Morris	80	0.86	Somewhat poorly drained	Farmland of statewide importance	3	0.55
F 9	F 9	MoC	Morris channery silt loam, 8 to 15 percent slopes	Morris	80	0.21	Somewhat poorly drained	Farmland of statewide importance	3	0.55
F 9	F 9	WIB	Wellsboro channery silt loam, 3 to 8 percent slopes	Wellsboro	90	0.54	Moderately well drained	All areas are prime farmland	3	0.32
F 9	F 9	WIC	Wellsboro channery silt loam, 8 to 15 percent slopes	Wellsboro	90	0.26	Moderately well drained	Farmland of statewide importance	3	0.32
F 9	F 9	MaB	Mardin channery silt loam, 3 to 8 percent slopes	Mardin	90	0.19	Moderately well drained	All areas are prime farmland	3	0.32

Soil Acreages For Farm

Musym	Muname	Comp	%	Acres	Drainage Class	Farmland Class	Tfact	Kfact
MoB	Morris gravelly silt loam, 3 to 8 percent slopes	Morris	77	2.23	Somewhat poorly drained	Farmland of statewide importance	3	0.55
MoC	Morris gravelly silt loam, 8 to 15 percent slopes	Morris	80	4.69	Somewhat poorly drained	Farmland of statewide importance	3	0.55
WeB	Wellsboro channery loam, 3 to 8 percent slopes	Wellsboro	80	1.27	Moderately well drained	All areas are prime farmland	3	0.32
WeC	Wellsboro channery loam, 8 to 15 percent slopes	Wellsboro	85	1.34	Moderately well drained	Farmland of statewide importance	3	0.32
MaB	Mardin channery silt loam, 3 to 8 percent slopes	Mardin	90	18.46	Moderately well drained	All areas are prime farmland	3	0.32

Musym	Muname	Comp	%	Acres	Drainage Class	Farmland Class	Tfact	Kfact
OgB	Oquaga channery loam, 3 to 12 percent slopes	Oquaga	100	9.05	Well drained	Farmland of statewide importance	3	0.64
WIB	Wellsboro channery silt loam, 3 to 8 percent slopes	Wellsboro	90	16.65	Moderately well drained	All areas are prime farmland	3	0.32
MaA	Mardin channery silt loam, 0 to 3 percent slopes	Mardin	85	19.48	Moderately well drained	All areas are prime farmland	3	0.32
OgC	Oquaga channery loam, 12 to 20 percent slopes	Oquaga	100	0	Well drained	Farmland of statewide importance	3	0.64
LaC	Lackawanna channery silt loam, 8 to 15 percent slopes	Lackawanna	90	5.82	Well drained	Farmland of statewide importance	3	0.32
MoB	Morris channery silt loam, 3 to 8 percent slopes	Morris	80	12.65	Somewhat poorly drained	Farmland of statewide importance	3	0.55
MoC	Morris channery silt loam, 8 to 15 percent slopes	Morris	80	1.5	Somewhat poorly drained	Farmland of statewide importance	3	0.55
WIC	Wellsboro channery silt loam, 8 to 15 percent slopes	Wellsboro	90	4.31	Moderately well drained	Farmland of statewide importance	3	0.32
NxB	Norwich very stony silt loam, 0 to 8 percent slopes	Norwich	100	0.46	Poorly drained	Not prime farmland	3	0.43
OgB	Oquaga channery loam, 3 to 8 percent slopes	Oquaga	85	2.16	Well drained	Farmland of statewide importance	3	0.37