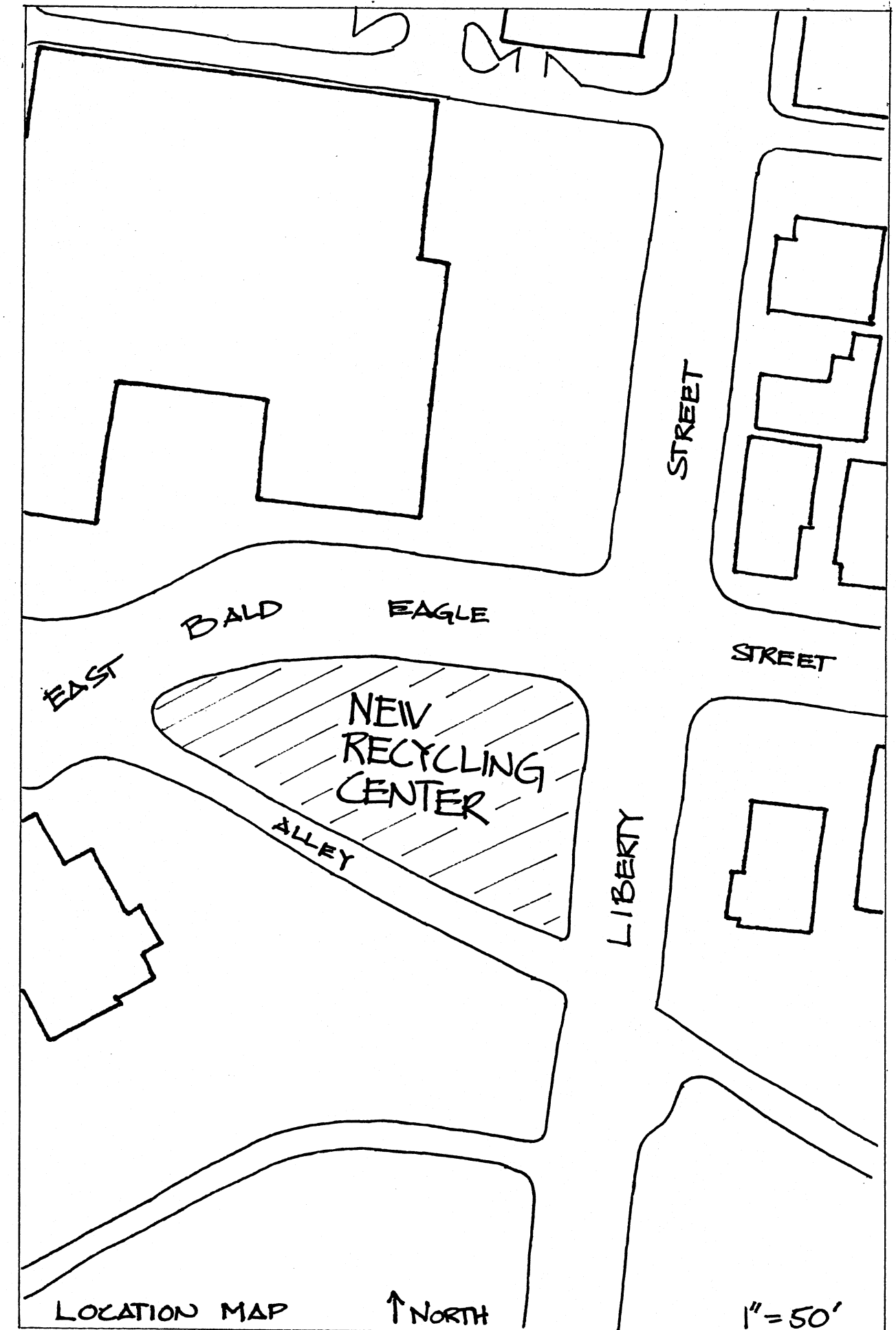
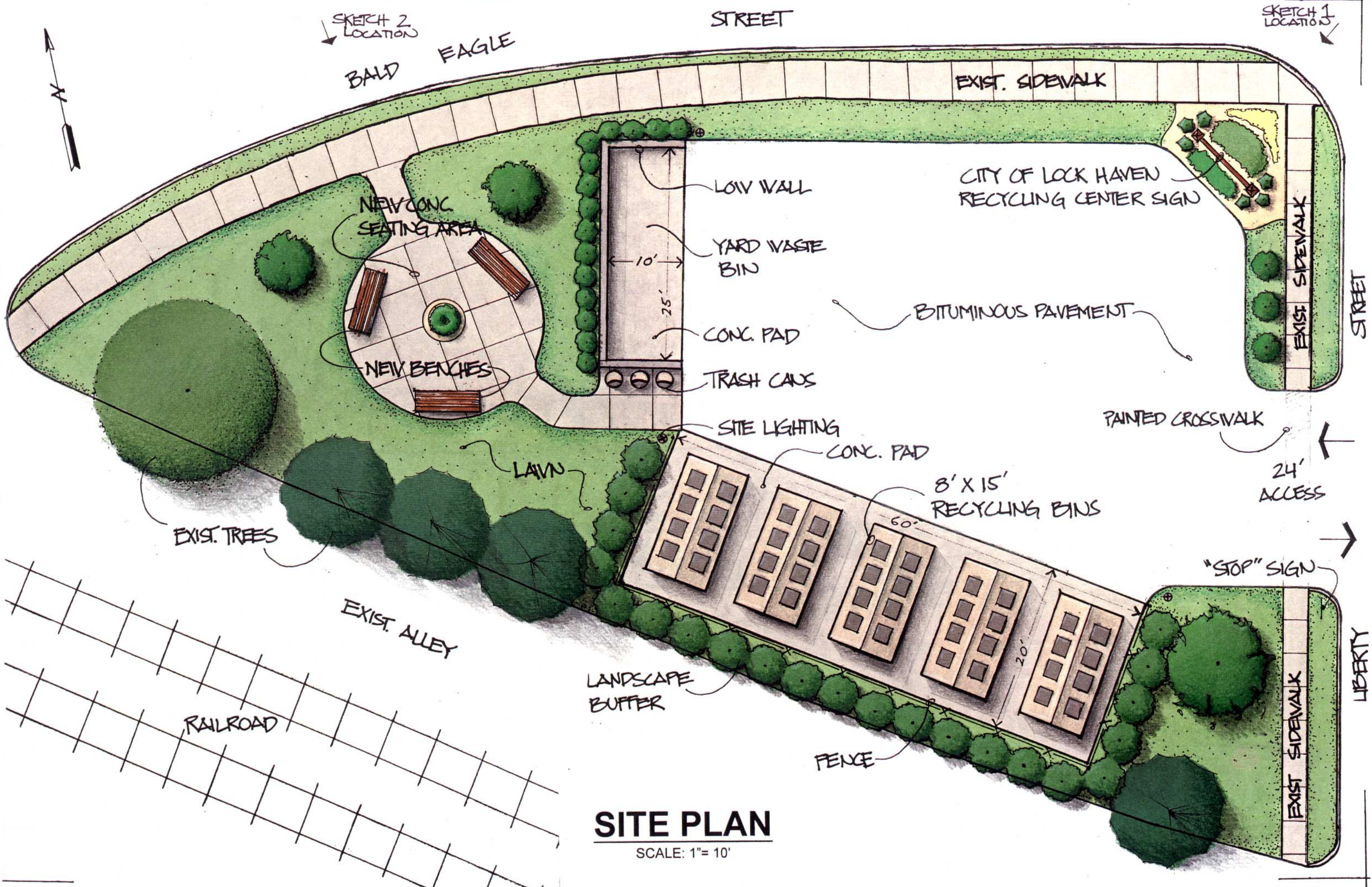


LOCK HAVEN RECYCLING CENTER

The following notes address the guidelines used to develop the Conceptual Plan for the Lock Haven Recycling Center:

1. The zoning district as determined from the City of Lock Haven Zoning Ordinance is Central Business District; principal use - Municipal Offices and Service Facilities. The appropriate setbacks as stipulated for this use have been applied.
2. Consideration has been given to sizing the Recycling Center for the larger recycling bins recommended by the Clinton County Solid Waste Authority as well as the larger collection trucks that will also be used.
3. An entrance to the Recycling Center is not proposed on East Bald Eagle Street because: the curved alignment makes sight distance a problem and; there are no stop signs on East Bald Eagle Street at its intersection with Liberty Street, allowing traffic to move freely and fast-paced through the intersection.
4. The Liberty Street entrance to the Recycling Center has been made 24 feet wide to permit traffic to move in and out of the center with minimal congestion.
5. The existing coniferous trees along the alley at the rear of the Recycling Center will be removed to provide as much area as possible for vehicles to turn around. Smaller shrubs are recommended to provide the desired screening. Existing trees will be preserved at other areas on the property.
6. The area west of the Recycling Center paving has been conceptually set aside for a parklet. The idea is to maintain as much green area as possible, to soften the perception of a paved Recycling Center area.





SITE PLAN

SCALE: 1" = 10'

SKETCH 2 LOCATION

SKETCH 1 LOCATION

STREET

BALD EAGLE

EXIST. SIDEWALK

CITY OF LOCK HAVEN RECYCLING CENTER SIGN

NEW CONC SEATING AREA

LOW WALL

YARD WASTE BIN

BITUMINOUS PAVEMENT

NEW BENCHES

CONC. PAD

TRASH CANS

EXIST. SIDEWALK

STREET

SITE LIGHTING

PAINTED CROSSWALK

CONC. PAD

24' ACCESS

8' X 15' RECYCLING BINS

EXIST. TREES

LAWN

"STOP" SIGN

EXIST. ALLEY

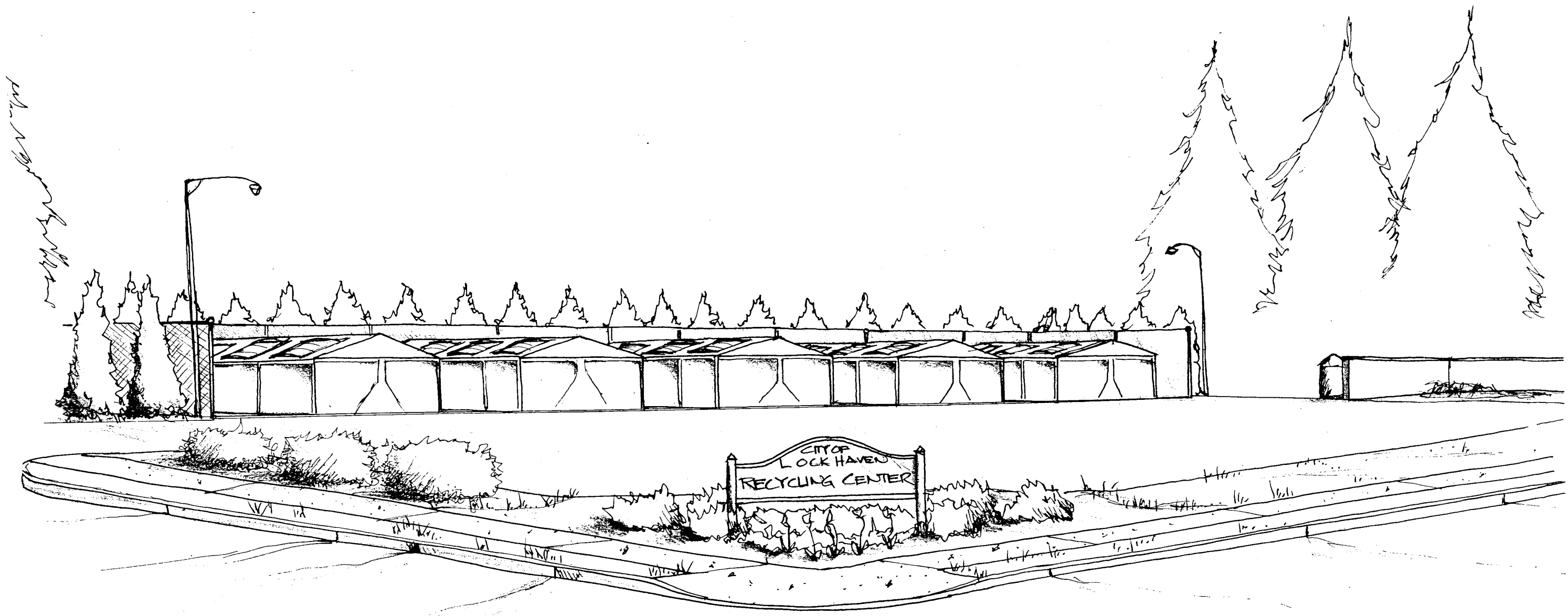
LANDSCAPE BUFFER

LIBERTY

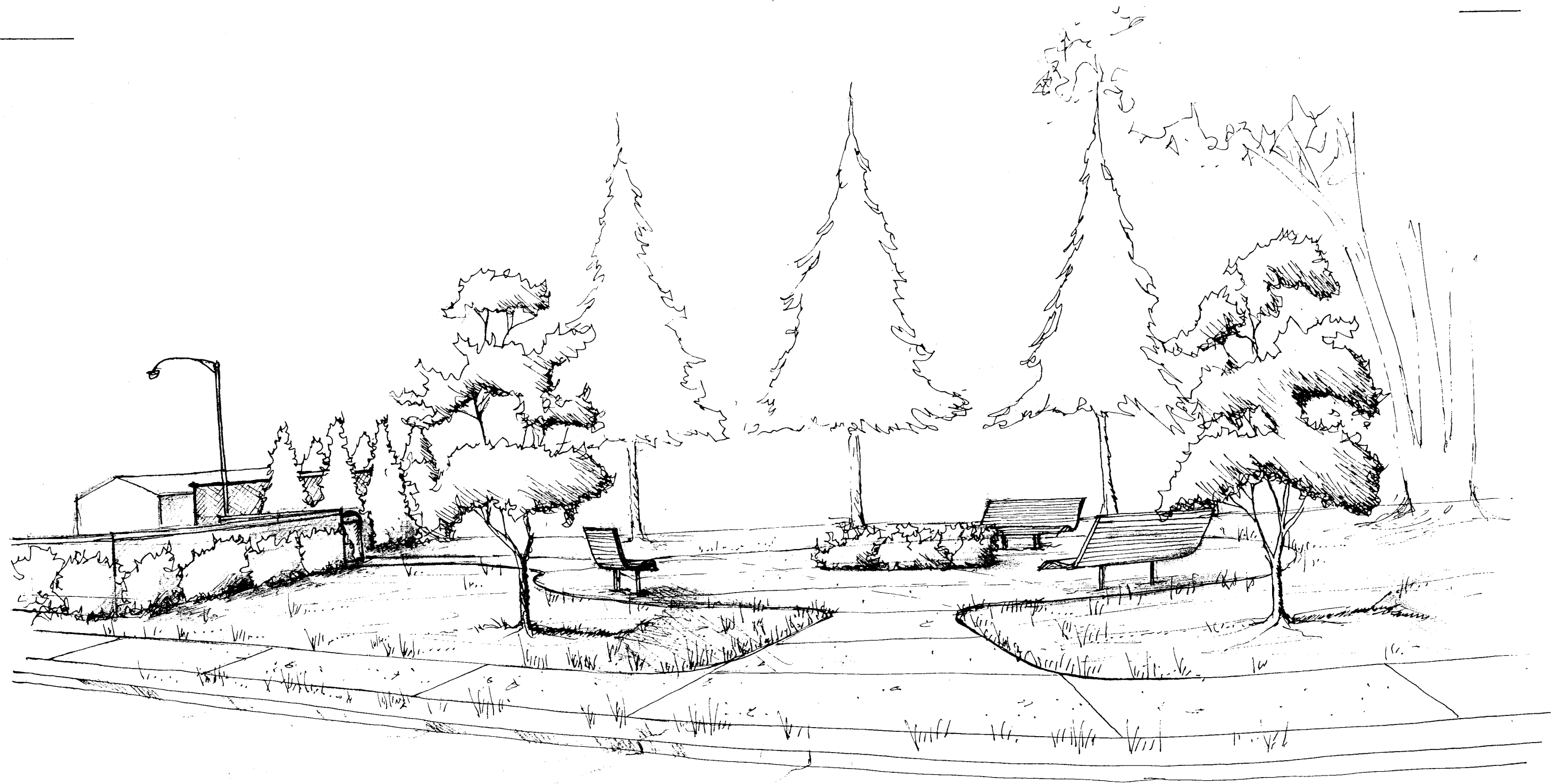
RAILROAD

FENCE

EXIST. SIDEWALK



SKETCH #1



SKETCH #2