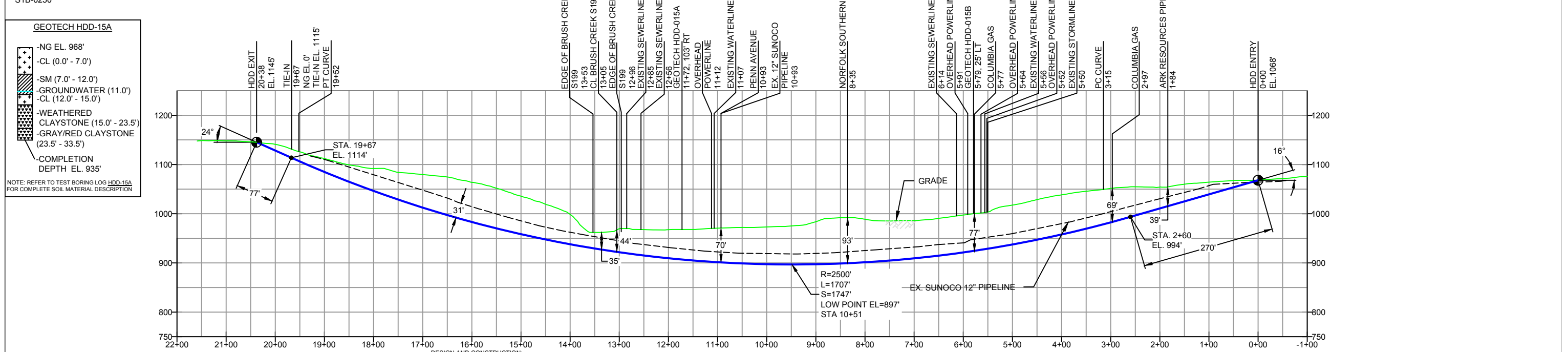


WESTMORELAND COUNTY, PENNSYLVANIA - TOWNSHIP S1B-0250



- DESIGN AND CONSTRUCTION:**
- CONTRACTOR SHALL FIELD VERIFY DEPTH OF ALL EXISTING UTILITIES SHOWN OR NOT SHOWN ON THIS DRAWING.
 - THE MINIMUM SEPARATION DISTANCE FROM EXISTING SUBSURFACE UTILITIES SHALL NOT BE LESS THAN 10 FEET AS MEASURED FROM THE OUTSIDE EDGE OF THE UTILITY TO OUTSIDE OF PROPOSED PIPELINE.
 - DESIGNED IN ACCORDANCE WITH CFR 49 195 & ASME B31.4
 - CROSSING PIPE SPECIFICATION:
HDD HORZ. LENGTH (L=): 2038'
HDD PIPE LENGTH (S=): 2039'
20" x 0.456" W.T., X-65, API5L, PSL2, ERW, BFW
COATING: 14-16 MILS FBE WITH 40 MILS MIN. ARO (POWERCRETE R95)
 - INTERNAL DESIGN PRESSURE 1480 PSIG (SEAM FACTOR 1.0, DESIGN FACTOR 0.50 (HOOP STRESS)).
 - INSTALLATION METHOD: HORIZONTAL DIRECTIONAL DRILL (HDD).
 - PIPELINE WARNING MARKERS SHALL BE INSTALLED ON BOTH SIDES OF ALL ROAD, RAILWAY, AND STREAM CROSSINGS.
 - CARRIER PIPE NOT ENCASED.
 - PIPE / AMBIENT TEMPERATURE MUST BE NO LESS THAN 30°F DURING PULLBACK WITHOUT PRIOR WRITTEN APPROVAL FROM THE ENGINEER.
 - CONDUCT 4-HOUR PRE-INSTALLATION HYDROTEST OF HDD PIPE STRING TO MINIMUM 1850 PSIG.
 - PIPELINE AND CROSSING TO BE INSTALLED AND MAINTAINED IN ACCORDANCE WITH LAST APPROVED AMERICAN RAILWAY ENGINEERING AND MAINTENANCE OF WAY ASSOCIATION SPECIFICATIONS FOR PIPELINES CONVEYING FLAMMABLE AND NON-FLAMMABLE SUBSTANCES.
 - BLASTING NOT PERMITTED.
 - SEE SUNOCO PENNSYLVANIA PIPELINE PROJECT ESRI WEBMAP FOR ACCESS ROAD ALIGNMENT.

NOTES		REF. DRAWING		REVISIONS						SUNOCO PIPELINE, L.P.		
1. ALL COORDINATES SHOWN ARE IN LATITUDE AND LONGITUDE. ALL MSL ELEVATIONS ARE NAD83		ES-1.43	TO ES-1.44	EROSION & SEDIMENT PLAN								20-INCH HORIZONTAL DIRECTIONAL DRILL NORFOLK SOUTHERN RAILWAY PENNSYLVANIA PIPELINE PROJECT
2. STATIONING IS BASED ON HORIZONTAL DISTANCES		SHEET 32	TO SHEET 33	AERIAL SITE PLAN								
3. ROONEY ENGINEERING, INC. AND SUNOCO PIPELINE, LP ARE NOT RESPONSIBLE FOR LOCATION OF FOREIGN UTILITIES SHOWN IN PLOT PLAN OR PROFILE. THE INFORMATION SHOWN HEREON IS FURNISHED WITHOUT LIABILITY ON THE PART OF ROONEY ENGINEERING, INC. AND SUNOCO PIPELINE, LP, FOR ANY DAMAGES RESULTING FROM ERRORS OR OMISSIONS THEREIN.					EP1	REVISED PER PADEP COMMENTS	MRS	05/20/16	RMB	05/20/16	AAW	05/20/16
4. CONTRACTOR IS RESPONSIBLE FOR LOCATING ALL UTILITIES. CONTACT ONE CALL AT 811 PRIOR TO DIGGING.					EP		JTW	03/15/16	RMB	03/15/16	AAW	03/15/16
5. SUNOCO EMERGENCY HOTLINE NUMBER IS #1-800-786-7440.		DWG NO	DWG NO	DESCRIPTION	NO.	DESCRIPTION	BY	DATE	CHK	DATE	APP	DATE

(303) 792-5911

SCALE: 1"=200' DWG. NO: PA-WM1-0088.0000-RR