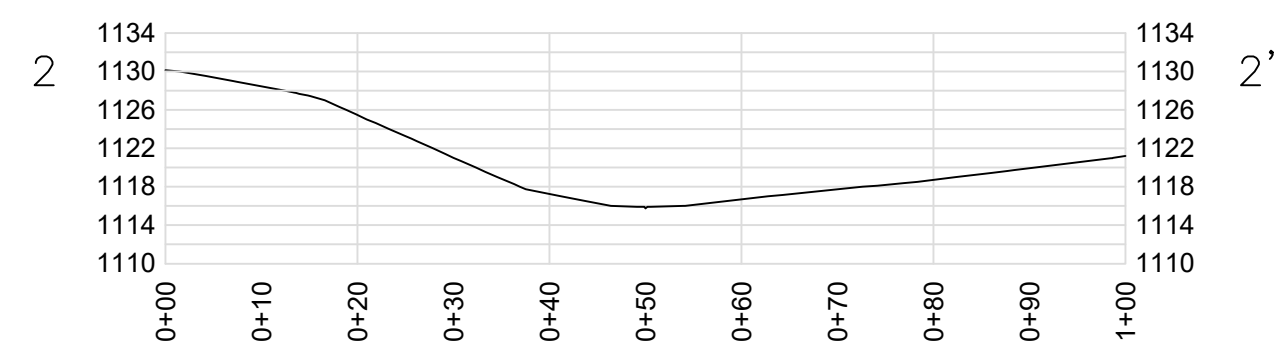
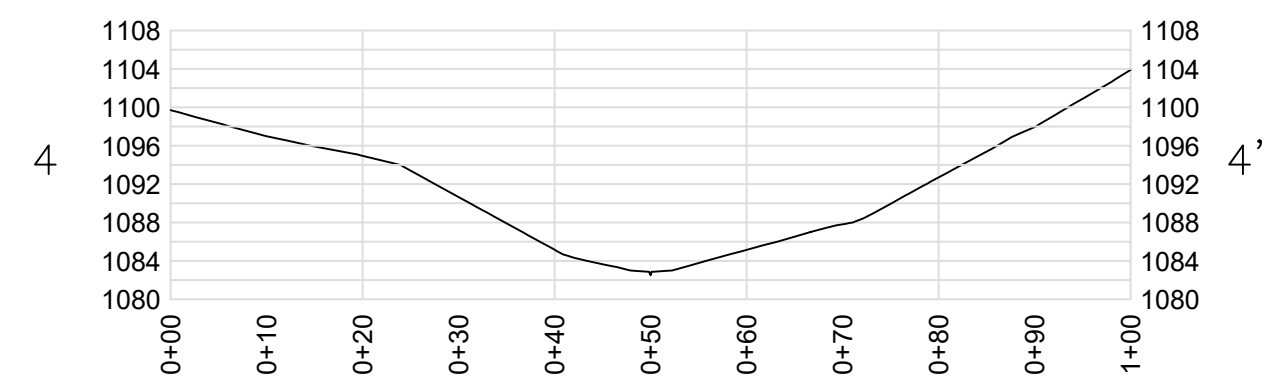


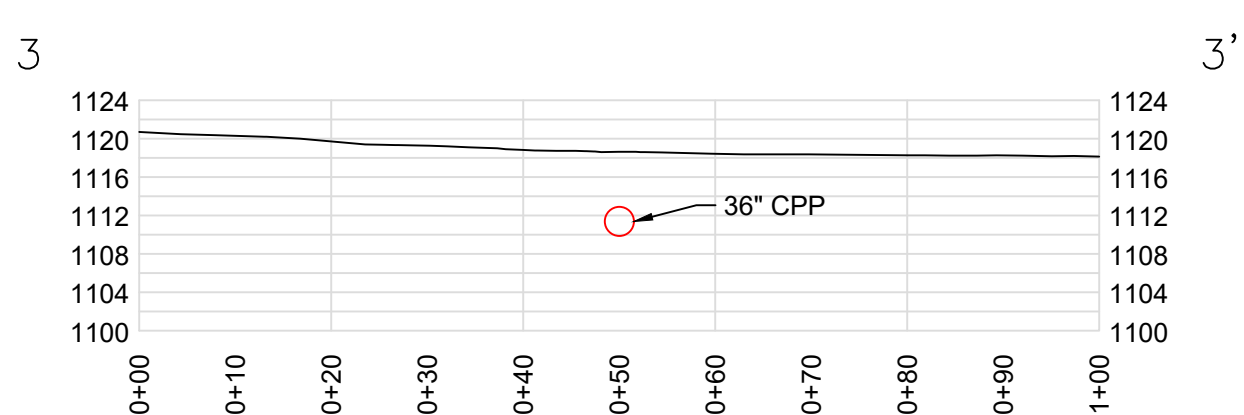
STREAM PROFILE 1 - 1'
UNNAMED TRIBUTARY D
SCALE: 1" = 20'



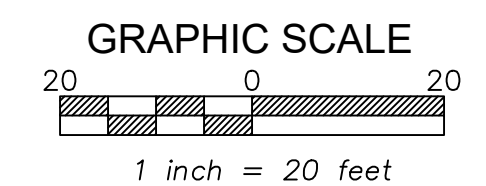
STREAM SECTION 2 - 2'
UNNAMED TRIBUTARY D
SCALE: 1" = 20'



STREAM SECTION 4 - 4'
UNNAMED TRIBUTARY D
SCALE: 1" = 20'



STREAM SECTION 3 - 3'
UNNAMED TRIBUTARY D
SCALE: 1" = 20'



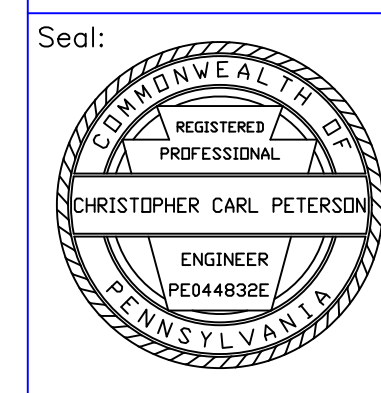
HORIZONTAL SCALE 1"=20' VERTICAL SCALE 1"=20'

Revisions subsequent to February 1, 2019 by: GeoTech Engineering, Inc.
Revisions subsequent to May 11, 2012 by: Hiser Engineering, Inc.
Original mapping by Earthtech, Inc. Uniontown PA office, dated 11/5/2010.

Neiswonger Construction, Inc.
17592 Route 322, Strattanville, PA 16258
Phone: (814) 764-3455

Maggie Lynn Underground Mine
Permit No.:63192001
Exhibit 14.1.B: Streams - UNT D Stream Crossing

Date:
December, 2021



Deemston Borough Washington County

Revisions: Prepared By:

MAIN OFFICE
4031 Allport Cutoff
Monticello, PA 16855
Phone: (814) 342-7090
Fax: (814) 342-7099

BRANCH OFFICE
90 Beaver Drive, Suite 120-D
DuBois, PA 15801
Phone: (814) 371-4660
Fax: (814) 371-4656