

**INVOICE**

**CBS CORPORATION - PITTSBURGH**

20 Stanwix Street, Room 1029, Pittsburgh, PA 15222  
(412) 642-4946

REMIT TO: CBS CORP. DISCONTINUED OPERATIONS, J.P. MORGAN CHASE LOCKBOX PROCESSING,  
P.O. BOX 33003, 4 CHASE METROTECH CENTER, 7<sup>TH</sup> FLOOR, BROOKLYN, NY 11245

CBS CORPORATION PNC CENTER 20 STANWIX STREET PITTSBURGH, PA 15222	SR	TAX CODE 00	YOUR ORDER NO.	IN REMITTING OR CORRESPONDING SHOW OUR	
				GENERAL ORDER NO.	INVOICE NO. AND DATE 2550202656 11/30/15

C  
H ATTN: DANA J. LENGYEL  
A VANPORT TOWNSHIP MUNICIPAL AUTH. S  
R 285 RIVER AVENUE H 1169  
G VANPORT, PA 15009 I  
E P

PERIOD OF SERVICE 8/19-9/20/15	TERMS: <b>NET 30 DAYS</b>	PRODUCT CODE ST-11-013	CONTROL DR 475.0000.1066503.000 CR 475.0000.2639963.000	PAGE NO. 1
-----------------------------------	---------------------------	---------------------------	---	------------------

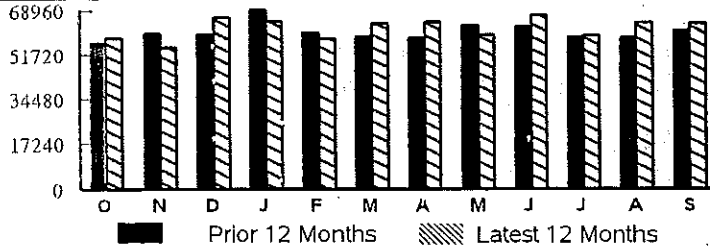
**ELECTRIC BILL FOR THE VANPORT STRIPPING TOWER. SEE ATTACHED**

<b>PLEASE PAY AMOUNT SHOWN</b>	<b>\$4,126.08</b>
--------------------------------	-------------------

**Usage & Demand Information**

Next Scheduled Meter Reading Date: October 19, 2015

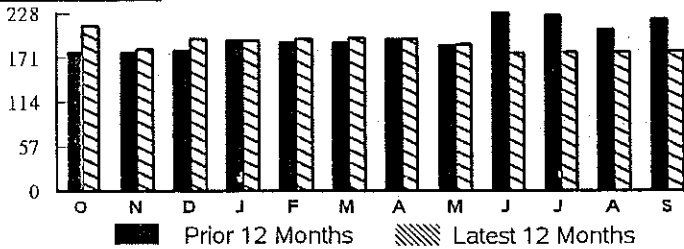
**kWh Usage:**



- Average Monthly Usage for the past 12 months is 61833 kWh.
- Total Annual Usage for the past 12 months is 742001 kWh.
- The average temperature for the billing period was 3 degrees warmer than last year.

The Price to Compare (PTC) for your rate class is 6.50 per kWh. It will change quarterly beginning June 1. Your actual PTC may differ based on your specific demand and usage patterns. For more information and supplier offers, visit PAMPowerSwitch.com.

**Billing Demand:**



**Summary**

**Prior Billing Information**

Total Amount of Last Bill	\$6,566.09
Total Payment(s) Received as of 09/14/15	-\$6,566.09
Total Amount Owed From Your Last Bill	\$0.00
DLC Basic Service Charges	\$6,327.00
<b>TOTAL ACCOUNT BALANCE PAYABLE TO DLC</b>	<b>\$6,327.00</b>

**ACTUAL METER READING BILL**

\* See pages 3 and 4 for a complete breakdown of charges.  
For more information see www.duquesnelight.com.  
Give to Dollar Energy Fund to help people without heat or light. Make a monthly pledge at www.duquesnelight.com or send a check to Duquesne Light Hardship Fund Donations, 411 Seventh Avenue MD 15-1, Pittsburgh, PA 15219. Your gift is tax deductible.

*Cr. 475.2639963*  
*Invoice to Vauxport Township*  
*Municipal Authority*  
*\$4,126.08*  
*Christine M. Perry*  
*11-18-15*

Estimated PA State Taxes	Late Charge After Oct 8, 2015	Payment Due	Amount Due
\$764.02	1.25%	Oct 8, 2015	\$6,327.01

Please return this portion with your payment. Please enclose check facing forward.  
Make payment payable to Duquesne Light Company.

Account Number  
4316830000

PLEASE PAY THIS AMOUNT BY **OCT 8, 2015**  
**\$6,327.01**

VIACOM  
DOUGLAS SPICUZZA  
20 STANWIX ST FL 10  
PITTSBURGH, PA 15222-1353

DUQUESNE LIGHT COMPANY  
PAYMENT PROCESSING CENTER  
PO BOX 10  
PITTSBURGH, PA 15230-0010

Meter No.	Voltage	Meter Constant	Service Period		Kilowatt Hour Information			Demand Information					
			From	To	Meter Readings	Difference	Kilowatt Hours	On-Peak	Off-Peak	Kilowatt Demand	Off-Peak	Adj. KW	
G02617623	460V	160.0000	08/19/15	09/20/15	Prior 3860.3518	Present 4258.5054	398.1536	63704.5760	0.8700	139.2000	1.2768	177.7306	
							<b>Total Used</b>		<b>63704.5760</b>				<b>Total Demand Billing</b>
							<b>50618.6560</b>						<b>177.7306</b>

Meter No.	Voltage	Meter Constant	Service Period		Reactive Information			Date/Time Demand Created				
			From	To	Meter Readings	Difference	kVArh	On-Peak	Off-Peak	On-Peak	Off-Peak	
G02617623	460V	160.0000	08/19/15	09/20/15	Prior 8184.5447	Present 8500.9113	316.3666	50618.6560				
							<b>Total Used</b>		<b>50618.6560</b>			

**General & Supplier Information**

Supplier Agreement ID: 4316830175

**Duquesne Light Company Information**

Duquesne Light's WATT CHOICES offers energy efficiency programs to help customers save money by conserving energy and reducing demand. To participate or to learn more about these programs, visit [www.wattchoices.com](http://www.wattchoices.com) or call 1-888-WATTLEY.

Need to reach us? Call (412) 393-7100 or on the web @ [www.duquesnelight.com](http://www.duquesnelight.com)

Duquesne Light submits monthly credit reporting data to Dun & Bradstreet, Experian and Equifax for our commercial and industrial customers.

Please visit our website [www.duquesnelight.com](http://www.duquesnelight.com) to sign up for electriccheck, and to learn about other convenient payment options.

- Generation/Supply prices and charges are set by the electric generation supplier you have chosen.
- The Public Utility Commission regulates distribution prices and services.
- The Federal Energy Regulatory Commission regulates transmission prices and services.

Service Period	50% of Cust Charge	Billing Demand (-) \$KW	VTMA Demand PFM = 1.37.2%	VTMA Share Of Demand Charge PFM = 1)	Energy Charge 550KW	Energy Charge 750KW	Energy Charge > 1300KW	Credits	VTMA Energy Charge 66%	Tax Adjust	VTMA Total
1/19/11 - 02/17/11	15.15	139.03	51.72	\$955.25	0.00	0.00	4221.17	0.00	2785.97	57.88	\$3,814.25
2/17/11 - 03/18/11	15.15	143.78	53.49	\$987.89	0.00	0.00	4228.04	0.00	2790.51	58.45	\$3,852.00
3/18/11 - 04/18/11	15.15	134.19	49.92	\$922.00	0.00	0.00	4368.53	0.00	2883.23	58.87	\$3,879.24
4/18/11 - 05/18/11	21.21	135.81	50.52	\$933.13	0.00	0.00	4503.89	0.00	2972.57	60.42	\$3,987.33
5/18/11 - 06/17/11	21.59	134.18	49.91	\$921.93	0.00	0.00	4387.62	0.00	2895.83	59.06	\$3,898.41
6/17/11 - 07/19/11	21.54	132.58	49.32	\$910.94	0.00	0.00	4888.01	0.00	3226.09	64.00	\$4,222.56
7/19/11 - 08/18/11	21.54	132.58	49.32	\$910.94	0.00	0.00	4328.90	0.00	2857.07	58.29	\$3,847.84
8/18/11 - 09/19/11	21.54	132.63	49.34	\$911.28	0.00	0.00	4233.62	0.00	2794.19	57.32	\$3,784.33
9/19/11 - 10/18/11	21.54	132.63	49.34	\$911.28	0.00	0.00	3710.26	0.00	2448.77	51.98	\$3,433.57
10/18/11 - 11/16/11	21.54	134.19	49.92	\$922.00	0.00	0.00	3821.97	0.00	2522.50	53.29	\$3,519.32
11/16/11 - 12/19/11	21.54	137.39	51.11	\$943.98	0.00	0.00	4211.97	0.00	2779.90	57.61	\$3,803.03
12/19/11 - 1/19/12	21.54	137.41	51.12	\$944.12	0.00	0.00	4146.02	0.00	2736.37	56.94	\$3,758.97
1/19/12 - 2/17/12	21.54	137.42	51.12	\$944.12	0.00	0.00	3843.01	0.00	2536.39	53.84	\$3,555.96
2/17/12 - 3/19/12	21.54	142.18	52.89	\$976.90	0.00	0.00	4904.58	0.00	3204.38	60.04	\$3,962.86
3/19/12 - 4/17/12	21.54	139.00	51.71	\$955.05	0.00	0.00	3927.83	8.45	2586.79	54.79	\$3,618.17
4/17/12 - 5/17/12	21.54	132.58	49.32	\$910.94	0.00	0.00	3964.18	8.22	2610.93	54.48	\$3,597.89
5/17/12 - 6/18/12	21.54	139.03	51.72	\$955.25	0.00	0.00	4324.55	8.97	2848.28	58.84	\$3,883.92
6/18/12 - 7/18/12	21.37	134.20	49.92	\$922.00	0.00	0.00	4017.44	8.75	2645.74	55.19	\$3,644.37
7/18/12 - 8/17/12	21.37	134.19	49.92	\$922.00	0.00	0.00	3745.99	8.46	2466.77	52.42	\$3,462.56
8/19/12 - 9/18/12	21.37	139.21	51.79	\$956.49	0.00	0.00	4043.24	8.83	2662.71	55.99	\$3,696.56
9/18/12 - 10/17/12	21.37	135.81	50.52	\$933.13	0.00	0.00	3761.85	8.51	2448.84	52.32	\$3,455.66
10/17/12 - 11/16/12	21.37	134.20	49.92	\$922.00	0.00	0.00	3721.59	8.53	2477.19	52.59	\$3,473.21
11/16/12 - 12/18/12	21.37	142.41	52.98	\$978.48	0.00	0.00	3684.46	9.04	2450.28	53.04	\$3,503.17
12/18/12 - 1/18/13	21.37	144.03	53.58	\$989.61	0.00	0.00	3684.46	4.99	2428.45	52.88	\$3,492.30
1/18/13 - 2/18/13	21.37	140.56	52.29	\$965.77	0.00	0.00	3869.01	2.00	2552.23	54.42	\$3,593.79
2/18/13 - 3/19/13	21.37	142.16	52.88	\$976.76	0.00	0.00	3500.54	1.94	2309.08	50.83	\$3,358.04
3/19/13 - 4/18/13	21.37	140.56	52.29	\$965.77	0.00	0.00	3950.87	2.02	2606.24	55.26	\$3,648.64
4/18/13 - 5/17/13	21.37	135.83	50.53	\$933.27	0.00	0.00	3346.99	1.85	2207.79	48.59	\$3,211.02
5/17/13 - 6/18/13	21.43	162.98	60.63	\$1,119.81	0.00	0.00	3919.64	2.14	2585.55	57.32	\$3,784.11
6/18/13 - 7/18/13	21.48	167.77	62.41	\$1,152.72	0.00	0.00	3844.96	2.16	2536.25	57.07	\$3,767.52
7/18/13 - 8/19/13	21.48	139.02	51.72	\$955.18	0.00	0.00	3834.02	1.91	2529.19	53.90	\$3,559.76
8/19/13 - 9/17/13	21.48	134.21	49.93	\$922.14	0.00	0.00	3320.39	1.52	2190.45	48.15	\$3,182.22
9/17/13 - 10/17/13	21.48	134.21	49.93	\$922.14	0.00	0.00	3382.98	1.33	2231.89	48.79	\$3,224.30
10/17/13 - 11/18/13	21.48	137.42	51.12	\$944.19	0.00	0.00	3613.53	1.35	2384.04	51.49	\$3,401.20
11/18/13 - 12/18/13	21.48	137.80	51.26	\$946.80	0.00	0.00	3430.29	1.36	2263.09	49.66	\$3,281.03
12/18/13 - 1/20/14	21.48	140.61	52.31	\$966.11	0.00	0.00	3844.90	1.50	2536.64	54.19	\$3,578.42
01/20/14 - 2/18/14	21.48	139.02	51.72	\$955.18	0.00	0.00	3372.19	1.46	2224.68	49.19	\$3,250.54
02/18/14 - 3/19/14	21.48	138.97	51.70	\$954.84	0.00	0.00	3282.99	1.44	2165.82	48.28	\$3,190.42
03/19/14 - 4/17/14	21.48	140.56	52.29	\$965.77	0.00	0.00	3247.26	1.47	2142.22	48.08	\$3,177.55
04/17/14 - 5/19/14	24.74	135.83	50.53	\$933.27	0.00	0.00	3523.80	1.53	2324.70	50.40	\$3,333.11
05/19/14 - 6/18/14	26.99	170.97	63.60	\$1,174.71	0.00	0.00	4712.77	2.23	3108.96	66.27	\$4,376.92
06/18/14 - 7/18/14	27.00	170.98	63.60	\$1,174.78	0.00	0.00	5194.54	2.39	3426.82	71.19	\$4,599.78
07/18/14 - 8/19/14	27.00	168.17	58.84	\$1,086.76	0.00	0.00	5151.97	2.26	3398.81	69.39	\$4,581.96
08/19/14 - 9/18/14	27.00	166.17	58.82	\$1,141.73	0.00	0.00	5509.98	2.53	3634.92	73.89	\$4,877.54
09/18/14 - 10/20/14	27.00	161.38	60.03	\$1,108.82	0.00	0.00	5353.50	2.53	3531.64	71.79	\$4,739.24
10/20/14 - 11/18/14	27.00	138.97	51.70	\$954.84	0.00	0.00	5029.42	2.28	3317.91	66.10	\$4,365.85
11/18/14 - 12/20/14	27.00	141.24	52.54	\$970.44	0.00	0.00	5941.24	2.35	3919.67	75.65	\$4,992.75
12/20/14 - 1/20/15	27.00	140.76	52.36	\$967.14	0.00	0.00	5733.50	1.07	3783.40	73.49	\$4,851.03
1/20/15 - 2/18/15	27.00	146.24	54.40	\$1,004.79	0.00	0.00	5130.68	0.44	3335.96	67.92	\$4,485.67
2/18/15 - 3/20/15	27.00	142.36	52.96	\$978.13	0.00	0.00	5946.04	0.46	3924.08	75.84	\$5,005.05
3/20/15 - 4/20/15	27.00	140.60	52.30	\$966.04	0.00	0.00	5992.89	0.00	3955.31	76.13	\$5,024.48
4/20/15 - 5/19/15	27.00	136.60	50.82	\$938.56	0.00	0.00	5549.60	0.43	3662.45	71.18	\$4,699.19
5/19/15 - 6/20/15	27.00	134.36	49.98	\$923.17	0.00	0.00	5666.66	0.44	3739.71	72.13	\$4,762.01
6/20/15 - 7/20/15	27.00	133.88	49.80	\$919.87	0.00	0.00	4529.16	0.42	2988.97	60.47	\$3,996.31
7/20/15 - 8/19/15	27.00	134.36	49.98	\$923.17	0.00	0.00	4876.66	0.43	3216.31	64.07	\$4,232.55
8/19/15 - 9/20/15	27.00	134.28	49.95	\$922.62	0.00	0.00	4718.64	0.44	3111.01	62.45	\$4,126.08