

INVOICE

CBS CORPORATION - PITTSBURGH

20 Stanwix Street, Room 1029, Pittsburgh, PA 15222
(412) 642-4946

REMIT TO: CBS CORP. DISCONTINUED OPERATIONS, J.P. MORGAN CHASE LOCKBOX PROCESSING,
P.O. BOX 33003, 4 CHASE METROTECH CENTER, 7TH FLOOR, BROOKLYN, NY 11245

CBS CORPORATION PNC CENTER 20 STANWIX STREET PITTSBURGH, PA 15222	SR	TAX CODE 00	YOUR ORDER NO.	IN REMITTING OR CORRESPONDING SHOW OUR	
				GENERAL ORDER NO.	INVOICE NO. AND DATE 2550202726 5/31/16

C
H ATTN: DANA J. LENGYEL S
A VANPORT TOWNSHIP MUNICIPAL AUTH. H 1169
R 285 RIVER AVENUE I
G VANPORT, PA 15009 P
E

PERIOD OF SERVICE 2/20-3/20/16	TERMS: NET 30 DAYS	PRODUCT CODE ST-05-025	CONTROL DR 475.0000.1066503.000 CR 475.0000.2639963.000	PAGE NO. 1
-----------------------------------	---------------------------	---------------------------	---	-------------------------

ELECTRIC BILL FOR THE VANPORT STRIPPING TOWER. SEE ATTACHED.

pd 6/16/16 ok # 22041

448.361

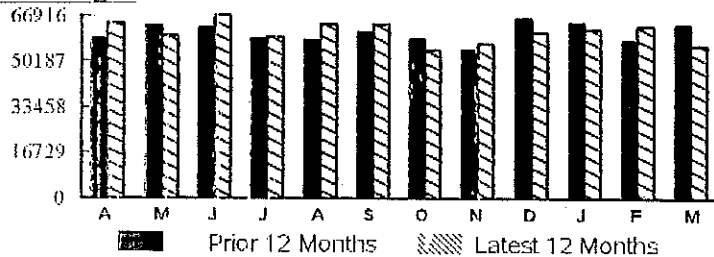
PLEASE PAY AMOUNT SHOWN	\$3781.70
--------------------------------	------------------

3-28-16

Usage & Demand Information

Next Scheduled Meter Reading Date: April 19, 2016

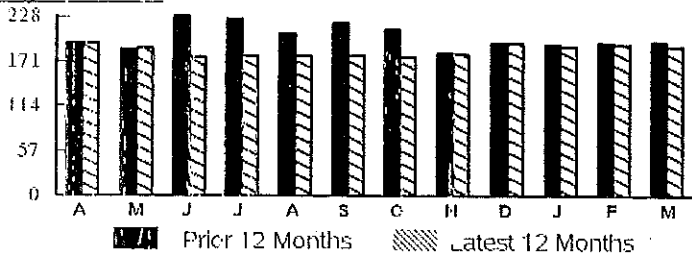
kWh Usage:



- Average Monthly Usage for the past 12 months is 60774 kWh.
- Total Annual Usage for the past 12 months is 729293 kWh.
- The average temperature for the billing period was 17 degrees warmer than last year.

The Price to Compare (PTC) for your rate class is 6.29 per kWh. It will change quarterly beginning June 1. Your actual PTC may differ based on your specific demand and usage patterns. For more information and supplier offers, visit PAPowerSwitch.com.

Billing Demand:



Summary

Prior Billing Information	<i>025</i>
Total Amount of Last Bill	<i>2550202721</i> \$6,924.23
Payment(s) Received as of 03/08/16	-6,924.23
Prior Account Balance	\$0.0
DLC Basic Service Charges	\$5,829.4
TOTAL ACCOUNT BALANCE PAYABLE TO DLC	\$5,829.4

ACTUAL METER READING BILL

For more information see www.duquesnelight.com.
 Give to Dollar Energy Fund to help people without heat or light.
 Make a monthly pledge at www.duquesnelight.com or send a check to Duquesne Light Hardship Fund Donations, 411 Seventh Avenue MD 15-1, Pittsburgh, PA 15219. Your gift is tax deductible.

Cr. 475. 2639963
Invoice to Vanport
Township Municipal Authority
\$3,781.70
Christine M. Benz
5-27-16

Estimated PA State Taxes	Late Charge After Apr 8, 2016	Payment Due	Amount Due
\$703.93	1.25%	Apr 8, 2016	\$5,829.42

Please return this portion with your payment. Please enclose check facing forward.
 Make payment payable to Duquesne Light Company in US Currency.

Account Number
 4316830000

PLEASE PAY THIS AMOUNT BY APR 8, 2016
 \$5,829.42

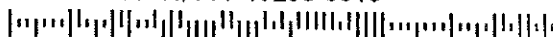
\$

USD Amount Enclosed

To make account changes, enroll in Autopay or pledge to the Dollar Energy Fund, please update information on the back of this coupon and check the box to the right.

VIACOM
 DOUGLAS SPICUZZA
 20 STANWIX ST FL 10
 PITTSBURGH, PA 15222-1353

DUQUESNE LIGHT COMPANY
 PAYMENT PROCESSING CENTER
 PO BOX 10
 PITTSBURGH, PA 15230-0010



Meter Information

			Kilowatt Hour Information					
			Service Period		Meter Readings			
Meter No.	Voltage	Meter Constant	From	To	Prior	Present	Difference	kWh
G02617623	460V	160.0000	02/20/16	03/20/16	6108.0188	6458.6374	350.6186	56098.9760
							Total Used	56098.9760

			Reactive Information					
			Service Period		Meter Readings			
Meter No.	Voltage	Meter Constant	From	To	Prior	Present	Difference	kVARh
G02617623	460V	160.0000	02/20/16	03/20/16	66.3818	374.4201	308.0383	49286.1280
							Total Used	49286.1280

			Demand Information							
			Service Period		Demand Readings		kW			
Meter No.	Voltage	Meter Constant	From	To	On-Peak	Off-Peak	On-Peak	Off-Peak	PFM	Adj. kW
G02617623	460V	160.0000	02/20/16	03/20/16	0.8930		142.8800		1.3271	189.6160
							Total Demand Billing			189.6160

Duquesne Light Company Basic Service Charges

Current Charges

Billing Period 1.00 Months

Customer Charge											
Demand Transmission											54.00
Demand Distribution					189.6160	kW@ \$1.31					248.40
Energy Supply					184.6160	kW@ \$5.58					1,030.16
Energy Supply					17410.0270	kWh@ 6.664100¢					1,160.22
Energy Supply					38688.9490	kWh@ 5.471100¢					2,116.71
Energy Transmission					56098.9760	kWh@ 0.400600¢					224.73
Energy Distribution					56098.9760	kWh@ 0.945300¢					530.30
PA EEA Surcharge					56098.9760	kWh@ 0.2400¢					134.64
Smart Meter Charge Three-Phase					1	MTR@ \$2.44					2.44
Pennsylvania Tax Adjustment											-2.15
Sales Tax											329.97
Total Current Charges											\$5,829.4
DLC Basic Service Charges (see Page 1 Summary)											\$5,829.4

Duquesne Light Company Information

Duquesne Light's WATT CHOICES offers energy efficiency programs to help customers save money by conserving energy and reducing demand. To participate or to learn more about these programs, visit www.wattchoices.com or call 1-888-WATTLEY.

Need to reach us? Call (412) 393-7100 or on the web @www.duquesnelight.com

Duquesne Light submits monthly credit reporting data to Dun & Bradstreet, Experian and Equifax for our commercial and industrial customers.

Please visit our website www.duquesnelight.com to sign up for electriccheck, and to learn about other convenient payment options.

Shopping Information Box

When shopping for electricity with an Electric Generation Supplier, please provide the following:

Supplier Agreement ID: 4316830175

Rate Schedule: GM-Medium Industrial > 25

If you are already shopping, it is important to understand the terms of your contract and expiration date.

Supplier Basic Service Charges

Supplier Agreement ID: 4316830175

Service Period	50% of Cust Charge	Billing Demand (-) 5KW	VTMA Demand PFM = 1 37.2%	VTMA Share Of Demand Charge PFM = 1)	Energy Charge 550KW	Energy Charge 750KW	Energy Charge > 1300KW	Credits	VTMA Energy Charge 66%	Tax Adjust	VTMA Total
12/19/11 - 1/19/12	21.54	137.41	51.12	\$944.12	0.00	0.00	4146.02	0.00	2736.37	56.94	\$3,758.97
1/19/12 - 2/17/12	21.54	137.42	51.12	\$944.19	0.00	0.00	3843.01	0.00	2536.39	53.84	\$3,555.96
2/17/12 - 3/19/12	21.54	142.18	52.89	\$976.90	0.00	0.00	4400.58	0.00	2904.38	60.04	\$3,962.86
3/19/12 - 4/17/12	21.54	139.00	51.71	\$955.05	0.00	0.00	3927.83	8.45	2586.79	54.79	\$3,618.17
4/17/12 - 5/17/12	21.54	132.58	49.32	\$910.94	0.00	0.00	3964.18	8.22	2610.93	54.48	\$3,597.89
5/17/12 - 6/18/12	21.54	139.03	51.72	\$955.25	0.00	0.00	4324.55	8.97	2848.28	58.84	\$3,883.92
6/18/12 - 7/18/12	21.37	134.20	49.92	\$922.07	0.00	0.00	4017.44	8.75	2645.74	55.19	\$3,644.37
7/18/12 - 8/17/12	21.37	134.19	49.92	\$922.00	0.00	0.00	3745.99	8.46	2466.77	52.42	\$3,462.56
8/19/12 - 9/18/12	21.37	139.21	51.79	\$956.49	0.00	0.00	4043.24	8.83	2662.71	55.99	\$3,696.56
9/18/12 - 10/17/12	21.37	135.81	50.52	\$933.13	0.00	0.00	3718.88	8.51	2448.84	52.32	\$3,455.66
10/17/12 - 11/16/12	21.37	134.20	49.92	\$922.07	0.00	0.00	3761.85	8.53	2477.19	52.59	\$3,473.21
11/16/12 - 12/18/12	21.37	142.41	52.98	\$978.48	0.00	0.00	3721.59	9.04	2450.28	53.04	\$3,503.17
12/18/12 - 1/18/13	21.37	144.03	53.58	\$989.61	0.00	0.00	3684.46	4.99	2428.45	52.88	\$3,492.30
1/18/13 - 2/18/13	21.37	140.56	52.29	\$965.77	0.00	0.00	3869.01	2.00	2552.23	54.42	\$3,593.79
2/18/13 - 3/19/13	21.37	142.16	52.88	\$976.76	0.00	0.00	3500.54	1.94	2309.08	50.83	\$3,358.04
3/19/13 - 4/18/13	21.37	140.56	52.29	\$965.77	0.00	0.00	3950.87	2.02	2606.24	55.26	\$3,648.64
4/18/13 - 5/17/13	21.37	135.83	50.53	\$933.27	0.00	0.00	3346.99	1.85	2207.79	48.59	\$3,211.02
5/17/13 - 6/18/13	21.43	162.98	60.63	\$1,119.81	0.00	0.00	3919.64	2.14	2585.55	57.32	\$3,784.11
6/18/13 - 7/18/13	21.48	167.77	62.41	\$1,152.72	0.00	0.00	3844.96	2.16	2536.25	57.07	\$3,767.52
7/18/13 - 8/19/13	21.48	139.02	51.72	\$955.18	0.00	0.00	3834.02	1.91	2529.19	53.90	\$3,559.76
8/19/13 - 9/17/13	21.48	134.21	49.93	\$922.14	0.00	0.00	3320.39	1.52	2190.45	48.15	\$3,182.22
9/17/13 - 10/17/13	21.48	134.21	49.93	\$922.14	0.00	0.00	3382.98	1.33	2231.89	48.79	\$3,224.30
10/17/13 - 11/18/13	21.48	137.42	51.12	\$944.19	0.00	0.00	3613.53	1.35	2384.04	51.49	\$3,401.20
11/18/13 - 12/18/13	21.48	137.80	51.26	\$946.80	0.00	0.00	3430.29	1.36	2263.09	49.66	\$3,281.03
12/18/13 - 1/20/14	21.48	140.61	52.31	\$966.11	0.00	0.00	3844.90	1.50	2536.64	54.19	\$3,578.42
01/20/14 - 2/18/14	21.48	139.02	51.72	\$955.18	0.00	0.00	3372.19	1.46	2224.68	49.19	\$3,250.54
02/18/14 - 3/19/14	21.48	138.97	51.70	\$954.84	0.00	0.00	3282.99	1.44	2165.82	48.28	\$3,190.42
03/19/14 - 4/17/14	21.48	140.56	52.29	\$965.77	0.00	0.00	3247.26	1.47	2142.22	48.08	\$3,177.55
04/17/14 - 5/19/14	24.74	135.83	50.53	\$933.27	0.00	0.00	3523.80	1.53	2324.70	50.40	\$3,333.11
05/19/14 - 6/18/14	26.99	170.97	63.60	\$1,174.71	0.00	0.00	4712.77	2.23	3108.96	66.27	\$4,376.92
06/18/14 - 7/18/14	27.00	170.98	63.60	\$1,174.78	0.00	0.00	5194.54	2.39	3426.82	71.19	\$4,699.78
07/18/14 - 8/19/14	27.00	158.17	58.84	\$1,086.76	0.00	0.00	5151.97	2.26	3398.81	69.39	\$4,581.96
08/19/14 - 9/18/14	27.00	166.17	61.82	\$1,141.73	0.00	0.00	5509.98	2.53	3634.92	73.89	\$4,877.54
09/18/14 - 10/20/14	27.00	161.38	60.03	\$1,108.82	0.00	0.00	5353.50	2.53	3531.64	71.79	\$4,739.24
10/20/14 - 11/18/14	27.00	138.97	51.70	\$954.84	0.00	0.00	5029.42	2.28	3317.91	66.10	\$4,365.85
11/18/14 - 12/20/14	27.00	141.24	52.54	\$970.44	0.00	0.00	5941.24	2.35	3919.67	75.65	\$4,992.75
12/20/14 - 1/20/15	27.00	140.76	52.36	\$967.14	0.00	0.00	5733.50	1.07	3783.40	73.49	\$4,851.03
1/20/15 - 2/18/15	27.00	146.24	54.40	\$1,004.79	0.00	0.00	5130.68	0.44	3385.96	67.92	\$4,485.67
2/18/15 - 3/20/15	27.00	142.36	52.96	\$978.13	0.00	0.00	5946.04	0.46	3924.08	75.84	\$5,005.05
3/20/15 - 4/20/15	27.00	140.60	52.30	\$966.04	0.00	0.00	5992.89	0.00	3955.31	76.13	\$5,024.48
4/20/15 - 5/19/15	27.00	136.60	50.82	\$938.56	0.00	0.00	5549.60	0.43	3662.45	71.18	\$4,699.19
5/19/15 - 6/20/15	27.00	134.36	49.98	\$923.17	0.00	0.00	5666.66	0.44	3739.71	72.13	\$4,762.01
6/20/15 - 7/20/15	27.00	133.88	49.80	\$919.87	0.00	0.00	4529.16	0.42	2988.97	60.47	\$3,996.31
7/20/15 - 8/19/15	27.00	134.36	49.98	\$923.17	0.00	0.00	4876.66	0.43	3218.31	64.07	\$4,232.55
8/19/15 - 9/20/15	27.00	134.28	49.95	\$922.62	0.00	0.00	4718.64	0.44	3114.01	62.45	\$4,126.08
9/20/15 - 10/19/15	27.00	133.72	49.74	\$918.77	0.00	0.00	3942.53	0.42	2601.79	54.46	\$3,602.02
10/19/15 - 11/18/15	27.00	134.36	49.98	\$923.17	0.00	0.00	4093.83	0.43	2701.64	56.08	\$3,707.89
11/18/15 - 12/20/15	27.00	139.64	51.95	\$959.44	0.00	0.00	4778.87	0.46	3153.75	63.63	\$4,203.83
12/20/15 - 1/20/16	27.00	138.68	51.59	\$952.85	0.00	0.00	5106.29	1.60	3369.10	66.86	\$4,415.80
1/20/16 - 2/20/16	27.00	140.44	52.24	\$964.94	0.00	0.00	5187.10	2.26	3421.99	67.87	\$4,481.80
2/20/16 - 3/20/16	27.00	137.88	51.29	\$947.35	0.00	0.00	4169.04	2.15	2750.15	57.20	\$3,781.70