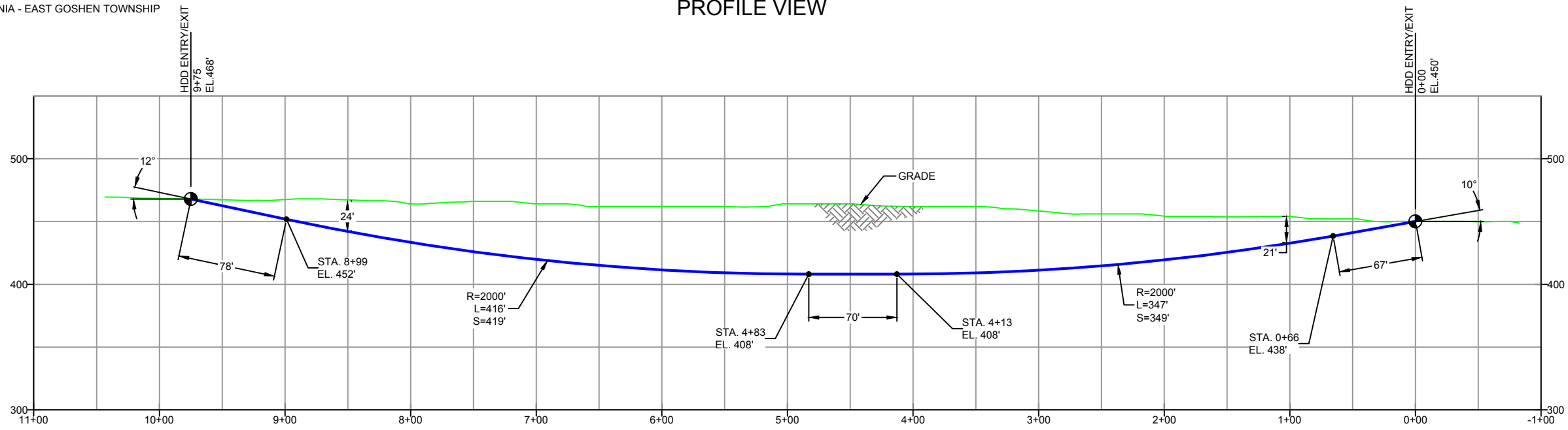


PLAN VIEW  
PROFILE VIEW

CHESTER COUNTY, PENNSYLVANIA - EAST GOSHEN TOWNSHIP  
S3-0510



DESIGN AND CONSTRUCTION:

- CONTRACTOR SHALL FIELD VERIFY DEPTH OF ALL EXISTING UTILITIES SHOWN OR NOT SHOWN ON THIS DRAWING.
- THE MINIMUM SEPARATION DISTANCE FROM EXISTING SUBSURFACE UTILITIES SHALL NOT BE LESS THAN 10 FEET AS MEASURED FROM THE OUTSIDE EDGE OF THE UTILITY TO OUTSIDE OF PROPOSED PIPELINE.
- DESIGNED IN ACCORDANCE WITH CFR 49 195 & ASME B31.4
- CROSSING PIPE SPECIFICATION:  
HDD HORZ. LENGTH (L)=975'  
HDD PIPE LENGTH (S)=983'  
20" x 0.456" W.T., X-65, API5L, PSL2, ERW, BFW  
COATING: 14-16 MILS FBE WITH 30-35 MIL ARO (POWERCRETE R95)
- INTERNAL DESIGN PRESSURE 1480 PSIG (SEAM FACTOR 1.0, DESIGN FACTOR 0.50).
- INSTALLATION METHOD: HORIZONTAL DIRECTIONAL DRILL (HDD).
- PIPELINE WARNING MARKERS SHALL BE INSTALLED ON BOTH SIDES OF ALL ROAD, RAILWAY, AND STREAM CROSSINGS.
- CARRIER PIPE NOT ENCASED.
- PIPE / AMBIENT TEMPERATURE MUST BE NO LESS THAN 30°F DURING PULLBACK WITHOUT PRIOR WRITTEN APPROVAL FROM THE ENGINEER.
- CONDUCT 4-HOUR PRE-INSTALLATION HYDROTEST OF HDD PIPE STRING TO MINIMUM 1850 PSIG.
- SEE SUNOCO PENNSYLVANIA PIPELINE PROJECT ESRI WEBMAP FOR ACCESS ROAD ALIGNMENT.
- SUNOCO PIPELINE, L.P.'S HORIZONTAL DIRECTIONAL DRILL INADVERTENT RETURN CONTINGENCY PLAN WILL BE IMPLEMENTED AT ALL TIMES.
- SUNOCO PIPELINE, L.P.'S EROSION AND SEDIMENTATION CONTROL PLAN WILL BE IMPLEMENTED AT ALL TIMES.

NOTES

- ALL COORDINATES SHOWN ARE IN LATITUDE AND LONGITUDE. ALL MSL ELEVATIONS ARE NAD83
- STATIONING IS BASED ON HORIZONTAL DISTANCES.
- ROONEY ENGINEERING, INC. AND SUNOCO PIPELINE, LP ARE NOT RESPONSIBLE FOR LOCATION OF FOREIGN UTILITIES SHOWN IN PLOT PLAN OR PROFILE. THE INFORMATION SHOWN HEREON IS FURNISHED WITHOUT LIABILITY ON THE PART OF ROONEY ENGINEERING, INC. AND SUNOCO PIPELINE, LP. FOR ANY DAMAGES RESULTING FROM ERRORS OR OMISSIONS THEREIN.
- CONTRACTOR IS RESPONSIBLE FOR LOCATING ALL UTILITIES. CONTACT ONE CALL AT 811 PRIOR TO DIGGING.
- SUNOCO EMERGENCY HOTLINE NUMBER IS #1-800-786-7440.

REF. DRAWING

ES-6.65	TO	ES-6.66	EROSION & SEDIMENT PLAN
SHEET 43	TO	SHEET 43	AERIAL SITE PLAN
DWG NO	DWG NO	DESCRIPTION	NO.

REVISIONS

NO.	DESCRIPTION	BY	DATE	CHK	DATE	APP	DATE
EP1	REVISED PER PADEP COMMENTS	JTW	05/10/16	RMB	05/10/16	AAW	05/10/16
EP		MRS	02/26/16	RMB	02/26/16	AAW	02/26/16
C	ISSUED FOR BID/DESIGN CHANGE & ADJUSTMENTS TO ROW	MRS	09/15/15	RMB	09/15/15	AAW	09/15/15
B	ISSUED FOR BID	MRS	08/21/15	RMB	08/21/15	AAW	08/21/15
A	ISSUED FOR REVIEW	RTT	03/26/15	RMB	03/26/15	AAW	03/26/15

**Sunoco Logistics Partners L.P.**

**TETRA TECH ROONEY**  
(303) 792-5911

SUNOCO PIPELINE, L.P.

20-INCH HORIZONTAL DIRECTIONAL DRILL  
N CHESTER RD  
PENNSYLVANIA PIPELINE PROJECT

SCALE: 1"=100' DWG. NO: PA-CH-0383.0003-SR