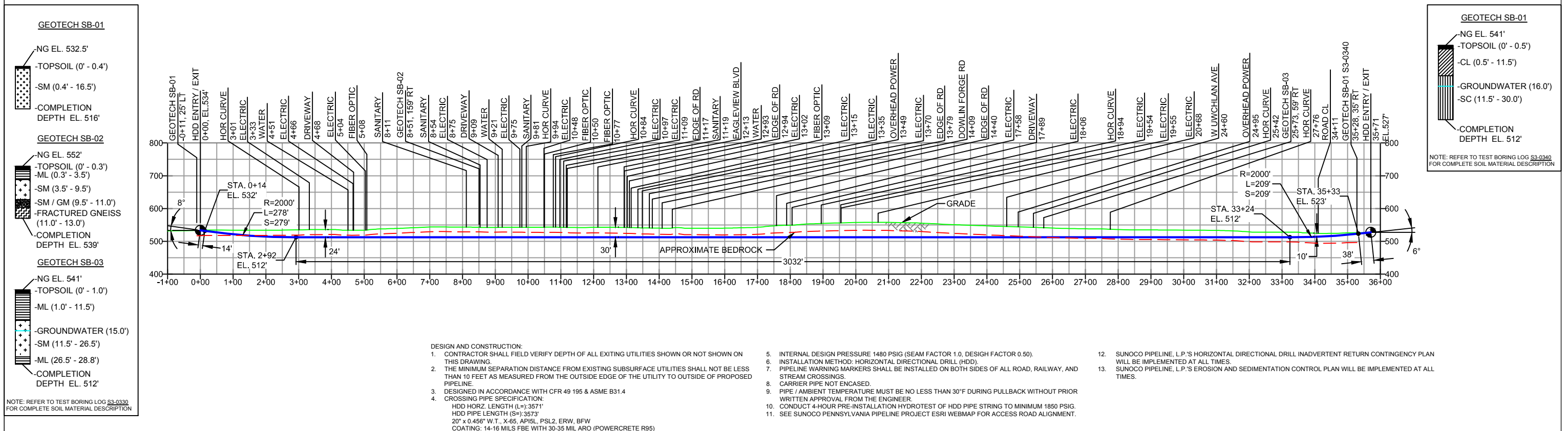


PLAN VIEW

CHESTER COUNTY, PENNSYLVANIA - UWCHLAN TOWNSHIP
S3-0331

PROFILE VIEW



NOTES

- ALL COORDINATES SHOWN ARE IN LATITUDE AND LONGITUDE. ALL MSL ELEVATIONS ARE NAD83
- STATIONING IS BASED ON HORIZONTAL DISTANCES.
- ROONEY ENGINEERING, INC. AND SUNOCO PIPELINE, LP ARE NOT RESPONSIBLE FOR LOCATION OF FOREIGN UTILITIES SHOWN IN PLOT PLAN OR PROFILE. THE INFORMATION SHOWN HEREON IS FURNISHED WITHOUT LIABILITY ON THE PART OF ROONEY ENGINEERING, INC. AND SUNOCO PIPELINE, LP. FOR ANY DAMAGES RESULTING FROM ERRORS OR OMISSIONS THEREIN.
- CONTRACTOR IS RESPONSIBLE FOR LOCATING ALL UTILITIES. CONTACT ONE CALL AT 811 PRIOR TO DIGGING.
- SUNOCO EMERGENCY HOTLINE NUMBER IS #1-800-786-7440.

REF. DRAWING	DESCRIPTION	NO.	DESCRIPTION
ES-6.38	TO ES-6.40	EROSION & SEDIMENT PLAN	EP1
SHEET 22	TO SHEET 23	AERIAL SITE PLAN	EP
			D
			C
			B
			A

REVISIONS	DATE	CHK	DATE	APP	DATE
MRS	05/11/16	RMB	05/11/16	AAW	05/11/16
MRS	03/15/16	RMB	03/15/16	AAW	03/15/16
MRS	09/29/15	RMB	09/29/15	AAW	09/29/15
DLM	08/21/15	RMB	08/21/15	AAW	08/21/15
DLM	07/31/15	RMB	07/31/15	AAW	07/31/15
KB	03/29/15	RMB	03/29/15	AAW	03/29/15

Sunoco Logistics Partners L.P.

TETRA TECH ROONEY
(303) 792-5911

SUNOCO PIPELINE, L.P.

20-INCH HORIZONTAL DIRECTIONAL DRILL
EAGLEVIEW BLVD
PENNSYLVANIA PIPELINE PROJECT

SCALE: 1"=300' DWG. NO. PA-CH-0138.0000-RD