



pennsylvania

DEPARTMENT OF ENVIRONMENTAL PROTECTION



Bureau of Environmental Cleanup & Brownfields

BISHOP TUBE HSCA SITE

East Whiteland Township

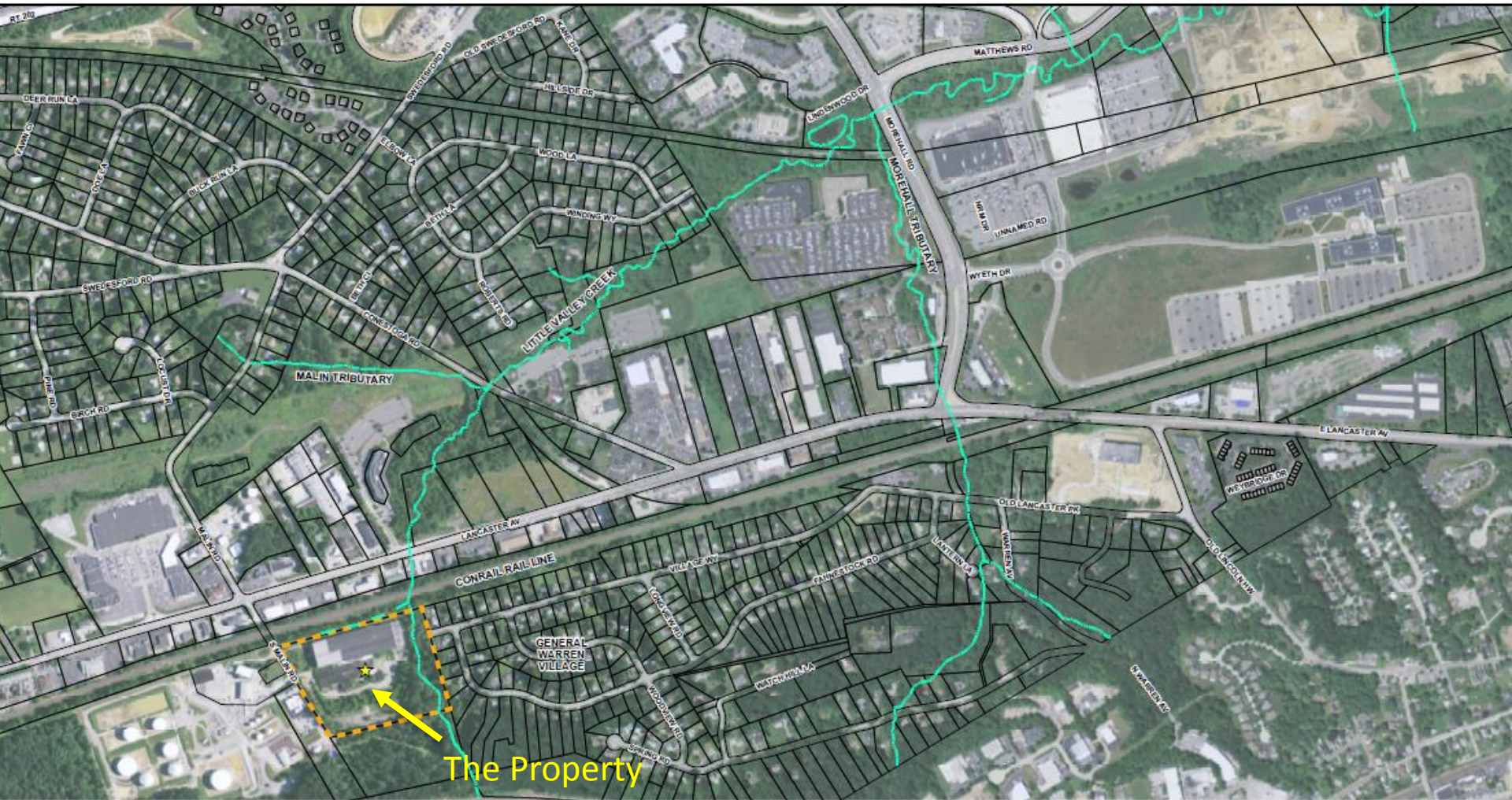
Information Session

June 7, 2017

Abridged Presentation

Agenda

- History
- DEP's Investigation
- Prospective Purchaser Agreement (PPA) & Amendments
- Consent Order and Agreement (CO&A)
- Johnson Matthey Inc/Whittaker Corp (JM/W) Investigation Activities
- Constitution Drive Partners (CDP)'s Proposed Cleanup Activities
- DEP's Next Steps



- Legend**
- ★ Site Location
 - Stream
 - - - Drainage Swale
 - - - Site Boundary
 - ▭ Parcels

Note:
 1. Service Layer Credits: ESRI, DigitalGlobe, GeoEye, Earthstar Geographics, CNES/Airbus DS, USDA, USGS, AEX, Getmapping, Aerogrid, IGN, IGP, swisstopo, and the GIS User Community, Layer Access Date: 8/27/2015.



Title:

LOCAL AREA MAP

FORMER BISHOP TUBE FACILITY
 CHESTER COUNTY, PENNSYLVANIA

Prepared For:

BISHOP TUBE PROJECT TEAM

ROUX ROUX ASSOCIATES, INC. Environmental Consulting & Management	Compiled by: SET	Date: 8/27/2015	FIGURE
	Prepared by: SET	Scale: 1:7,200	3
	Project Mgr: JAK	Office: NJ	
	File No: 10-18-F3(B)	Project: 0834 0003.000	

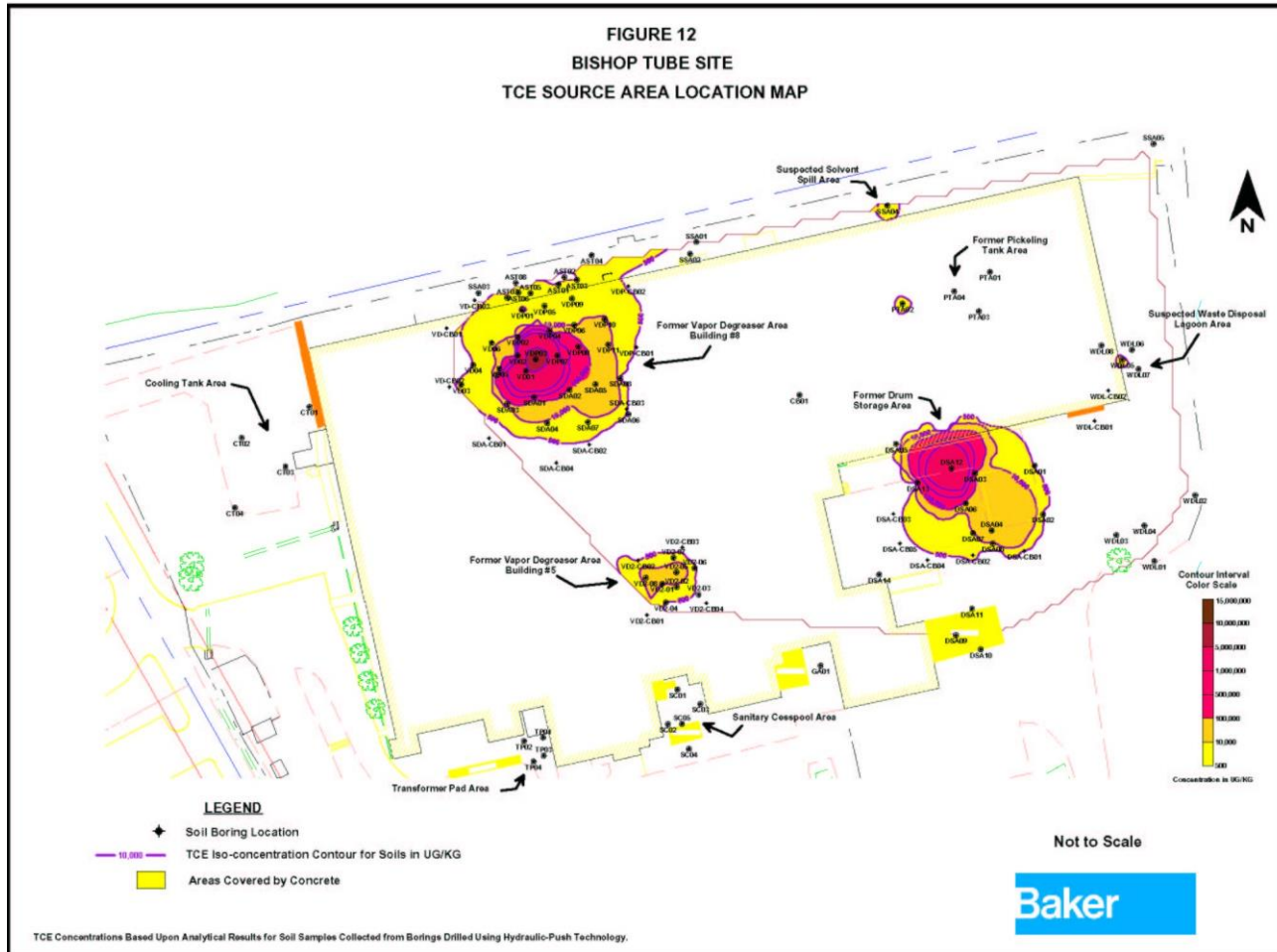
History

- 1950s: J. Bishop
 - Precious Metals
- 1960s - 1990s: Matthey Bishop, Whittaker Corp., Christiana Metals, Alloy Steel & Marcegaglia, USA
 - Stainless Steel Tubing
- 1999: Site abandoned by Christiana Metals and HSCA Investigation initiated

▶ DEP's Investigation

- 1999: Hazardous Sites Cleanup Program
 - Soil
 - Groundwater (shallow & deep)
 - Surface water (Little Valley Creek)
 - Exposure pathways (i.e., private wells)

DEP's Investigation - Soil



2000-2003: DEP's Soil Investigation revealed 3 hot spots.

▶ DEP's Investigation - Groundwater

2000 - 2008: Findings

- Onsite groundwater contaminated by TCE and other chlorinated solvents in deep and shallow aquifers
- Evidence of free product
- Onsite stream discharge of contaminated groundwater.
- Migration off-site confirmed (bedrock geology increases complexity)
- Full extent of the contamination was not known.

ATSDR Involvement

2007: East Whiteland's Environmental Advisory Committee (EAC) petitioned the Agency for Toxic Substances and Disease Registry (ATSDR) to conduct "public health assessment activities" for the community.

2008: ATSDR completed the Health Consultation in cooperation with the Chester County Health Department, PA's Department of Health, and DEP.

- the report identified off-site data gaps

2016: the Health Consultation was updated.

➤ Prospective Purchaser Agreement (PPA)

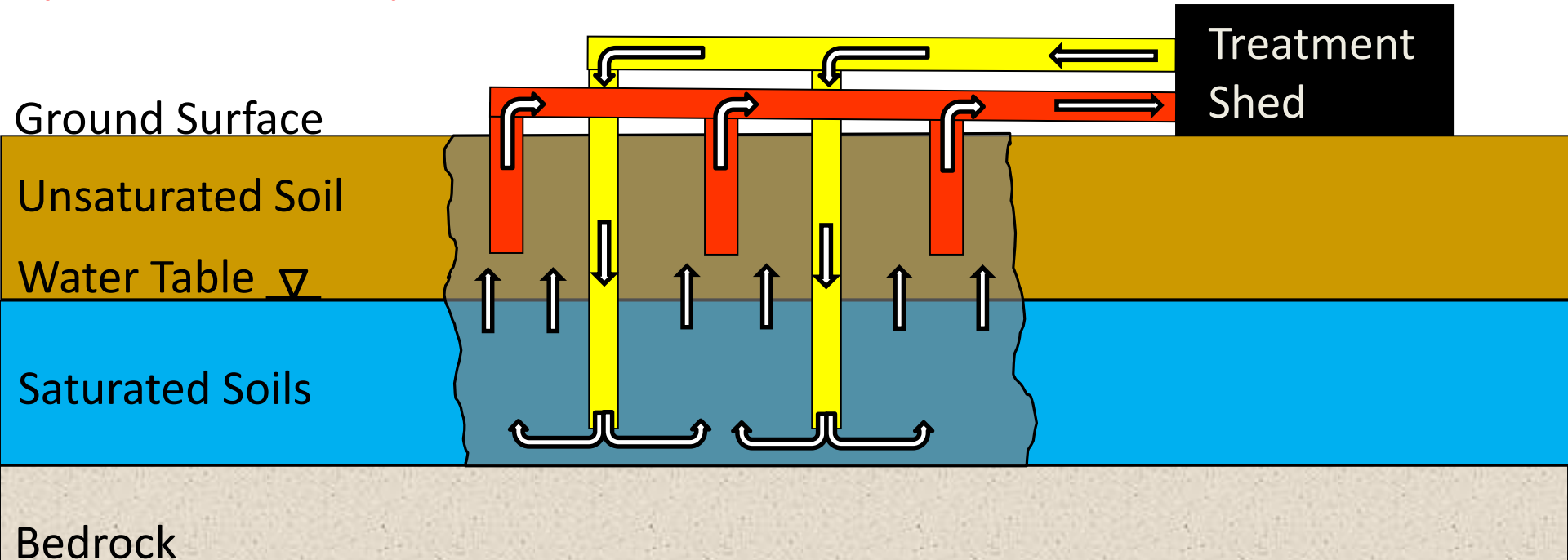
A PPA is a common agreement between DEP and parties that want to purchase a contaminated property and remediate it for reuse and limit their liability associated with the existing contamination.

- 2005: DEP executed a PPA with Constitution Drive Partners, L.P. (CDP).
- 2007 amendment: defined responsibilities associated with the Air Sparging & Soil Vapor Extraction remedial system (AS/SVE System).

AS/SVE System

A system that involves pumping air into ground to help flush (bubble) the contaminants up through collection pipes (suction).

*Ultimately the system failed to meet some of the flow rate performance requirements.



▶ Prospective Purchaser Agreement (PPA)

- 2010: Second Amendment to the PPA. CDP agreed to -
 - repair and run the AS/SVE system for a seventy-two (72) hour period
 - after which it would relinquish control to the DEP
 - pay the DEP an amount of \$30,000

**CDP had fulfilled remedial obligations*

➤ Consent Order & Agreement (CO&A)

- August 2008: DEP entered into a CO&A with Johnson Matthey Inc.
- August 2009: the CO&A was amended to include Whittaker Corp.
 - Johnson Matthey/Whittaker Corp (JM/W) agreed to perform a complete Remedial Investigation.

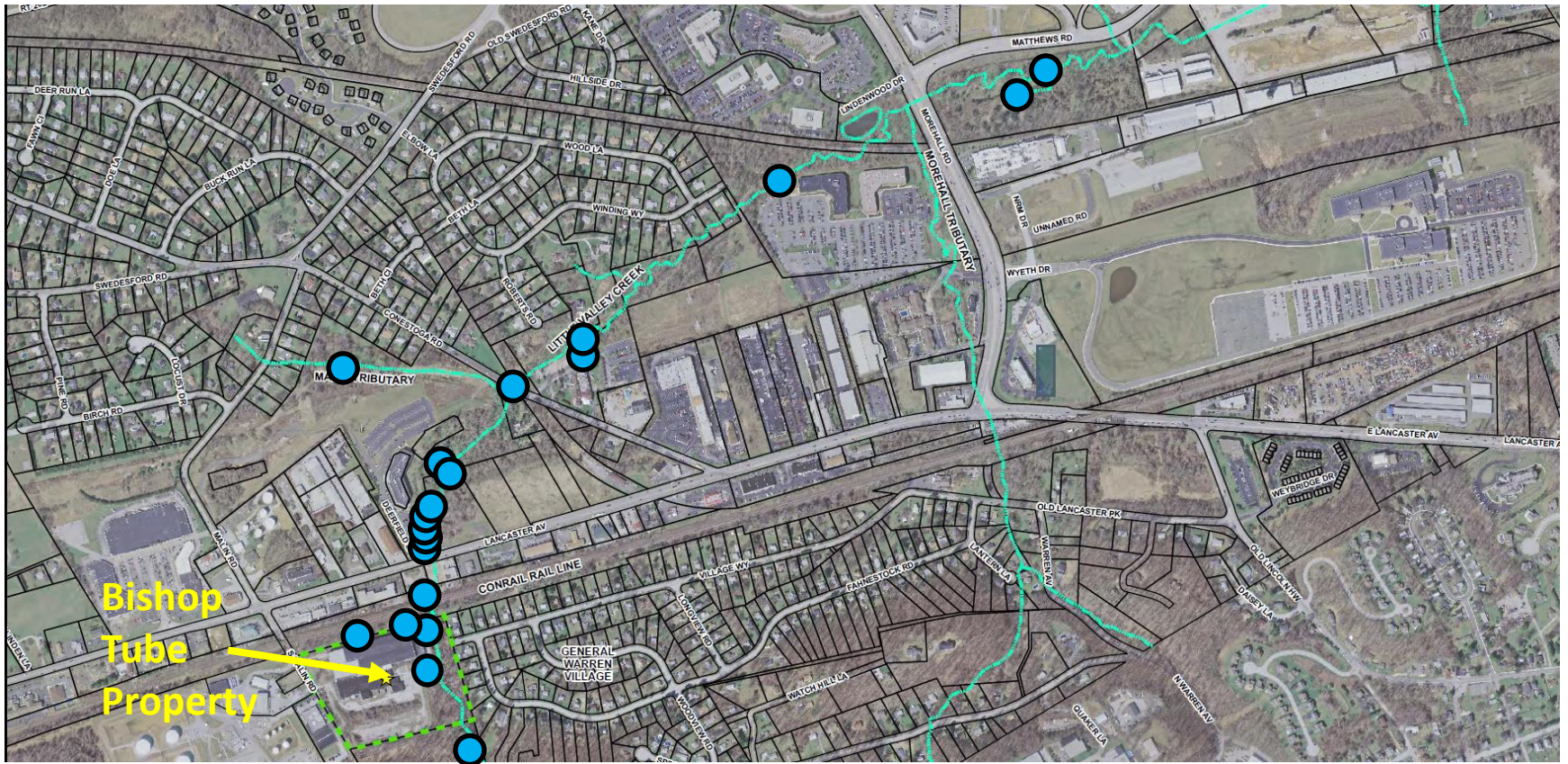
JM/W Activities

JM/W has submitted the following for DEP approval:

- December 2010: Remedial Investigation (RI) Report
- August 2015: RI Report
- October 2015: Treatability Study (TS) Report
- March 2017: Preliminary Feasibility Study Screening Memorandum

***Note: this is not a comprehensive list of all of the documents that JM/W has submitted**

JM/W Activities - Surface Water



(Modified) Figure 8: 2015 Remedial Investigation Report

● Approximate sampling locations

JM/W Activities - Groundwater

Estimated Area of Study



JM/W Activities - Continuing

- Delineate the full downgradient extent of groundwater contamination
- Complete the Risk Assessment
 - Vapor Intrusion (VI) investigation activities
 - Update the Surface Water Risk Assessment information
 - Additional sampling
 - Toxicology information

CDP's Proposed Cleanup Activities

- 2016: Letter of Intent to apply for an Industrial Sites Reuse (ISRP) Grant submitted by Chester County Economic Development Council (CCEDC) to Department of Community and Economic Development (DCED).
- CDP plans to partner with the CCEDC to remediate three soil hotspots by excavating the soil and transporting it off-site.

CDP's Proposed Cleanup Activities

- DEP's role in the ISRP grant process:
 - Help determine eligibility of a Site.
 - Review the scope of work (SOW) to determine if the proposed activities will meet requirements of our Land Recycling Program (Act 2).
 - If the grant is awarded by DCED
 - CCEDC's will direct the work under the approved SOW.
 - DEP will provide oversight.

***DEP has not yet approved a SOW.**

▶ DEP's Next Steps

- After review and approval of JM/W's RI and FS: DEP will propose a comprehensive response action to fully address the contamination (soil, ground & surface water).
- DEP will open an Administrative Record for a 90 day public comment period. DEP will hold a public hearing during the comment period.
- After the comment period closes DEP will respond to public comments and select and implement the remedy.

Key Points

- Any local land development issues, such as zoning or steep slope variances, are exclusively under the authority of East Whiteland Township.
- DEP's role is to review cleanup plans/reports related to the proposed use of the property.
- Full remediation means that the cleanup will address soil, groundwater, and surface water contamination.



Bureau of Environmental Cleanup & Brownfields

Contact Information

Dustin A. Armstrong
PA Department of Environmental Protection
2 East Main Street
Norristown, PA 19401
Phone: 484.250.5723
email: darmstrong@pa.gov

DEP's Website for Bishop Tube:
www.dep.pa.gov/bishoptube