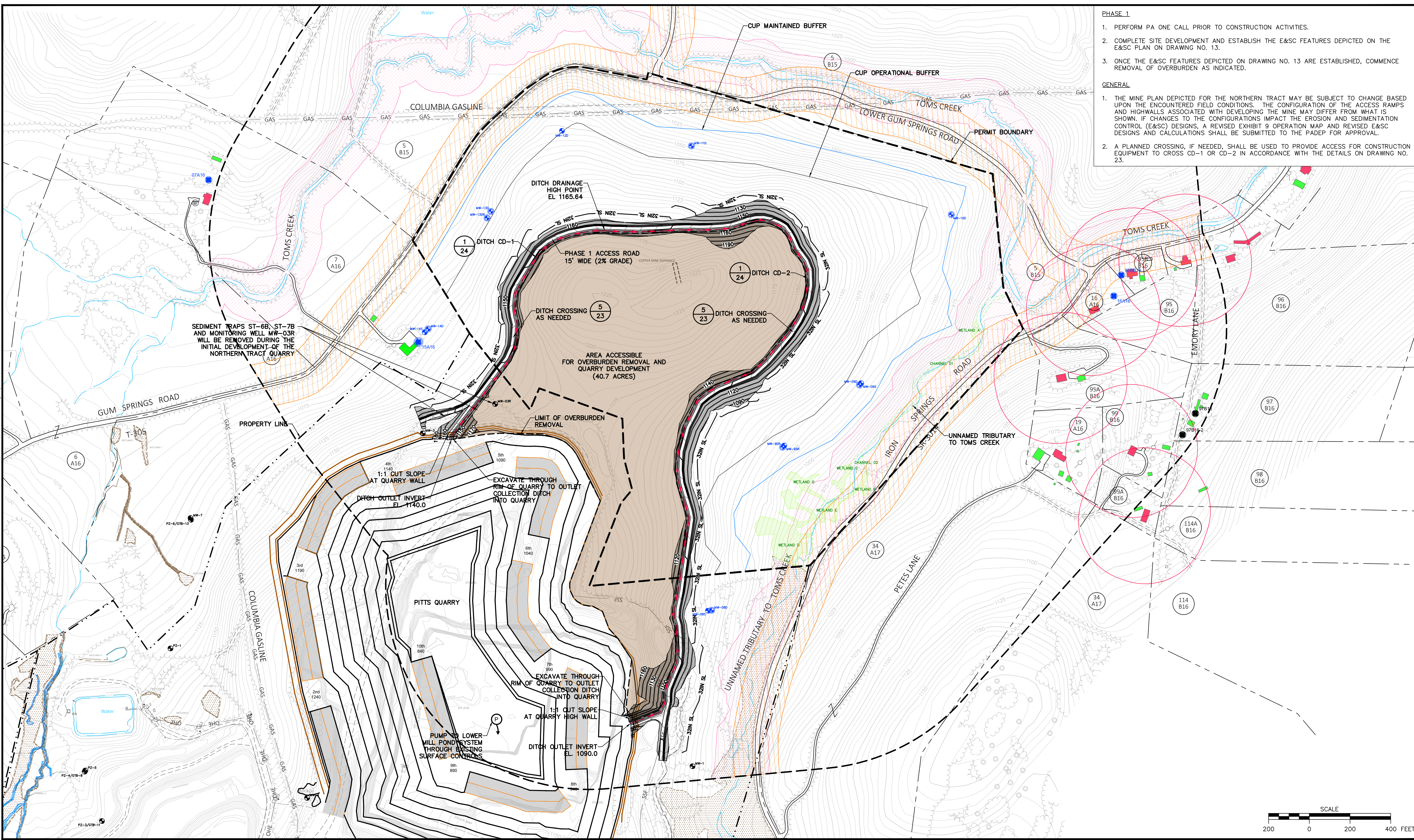
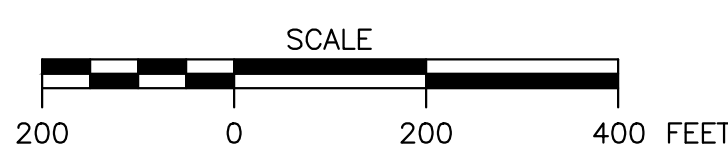


R: 2015\152596 - SGI Disposal Embankment\Drawings Northern Tract\Exhibit 12-Quarry Site Development-Phase 1-R1.dwg Monday, April 16, 2018 9:25:22 AM



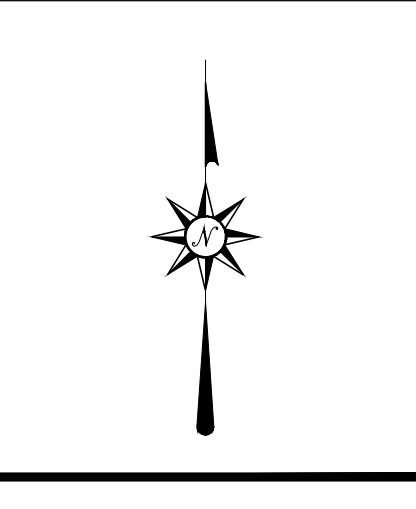
- PHASE 1**
1. PERFORM PA ONE CALL PRIOR TO CONSTRUCTION ACTIVITIES.
 2. COMPLETE SITE DEVELOPMENT AND ESTABLISH THE E&SC FEATURES DEPICTED ON THE E&SC PLAN ON DRAWING NO. 13.
 3. ONCE THE E&SC FEATURES DEPICTED ON DRAWING NO. 13 ARE ESTABLISHED, COMMENCE REMOVAL OF OVERBURDEN AS INDICATED.
- GENERAL**
1. THE MINE PLAN DEPICTED FOR THE NORTHERN TRACT MAY BE SUBJECT TO CHANGE BASED UPON THE ENCOUNTERED FIELD CONDITIONS. THE CONFIGURATION OF THE ACCESS RAMPS AND HIGHWALLS ASSOCIATED WITH DEVELOPING THE MINE MAY DIFFER FROM WHAT IS SHOWN. IF CHANGES TO THE CONFIGURATIONS IMPACT THE EROSION AND SEDIMENTATION CONTROL (E&SC) DESIGNS, A REVISED EXHIBIT 9 OPERATION MAP AND REVISED E&SC DESIGNS AND CALCULATIONS SHALL BE SUBMITTED TO THE PADEP FOR APPROVAL.
 2. A PLANNED CROSSING, IF NEEDED, SHALL BE USED TO PROVIDE ACCESS FOR CONSTRUCTION EQUIPMENT TO CROSS CD-1 OR CD-2 IN ACCORDANCE WITH THE DETAILS ON DRAWING NO. 23.



NOTES / REVISIONS	
REV.	REVISION DESCRIPTION
1	REVISED PER PADEP-DMO COMMENT LETTER DATED 3/6/2018
2	
3	
4	
PADEP-DMO ISSUED FOR	DATE
	4/17/2018
MADE BY	DATE
MJD	4/17/2018
CHKD BY	DATE
MDW	4/17/2018

SEAL:

4-17-18



D'APPOLONIA
101 RUDI ROAD, FLOOR 2
PITTSBURGH, PENNSYLVANIA 15235-4559
(412) 856-9440 FAX (412) 856-9535

SGI

PROJECT NUMBER: 152596A
FILE NAME: Exhibit 12-Quarry Site Development-Phase 1-R1.dwg

DRAWN BY: AJM
CHECKED BY: RMS/MDW

DATE: 4/16/2018
DATE: 12/22/2017

SPECIALTY GRANULES LLC
CHARMIAN - NORTHERN TRACT QUARRY

EXHIBIT 9
QUARRY SITE DEVELOPMENT - PHASE 1

SCALE: AS SHOWN
DRAWING NO. 6
REV 1