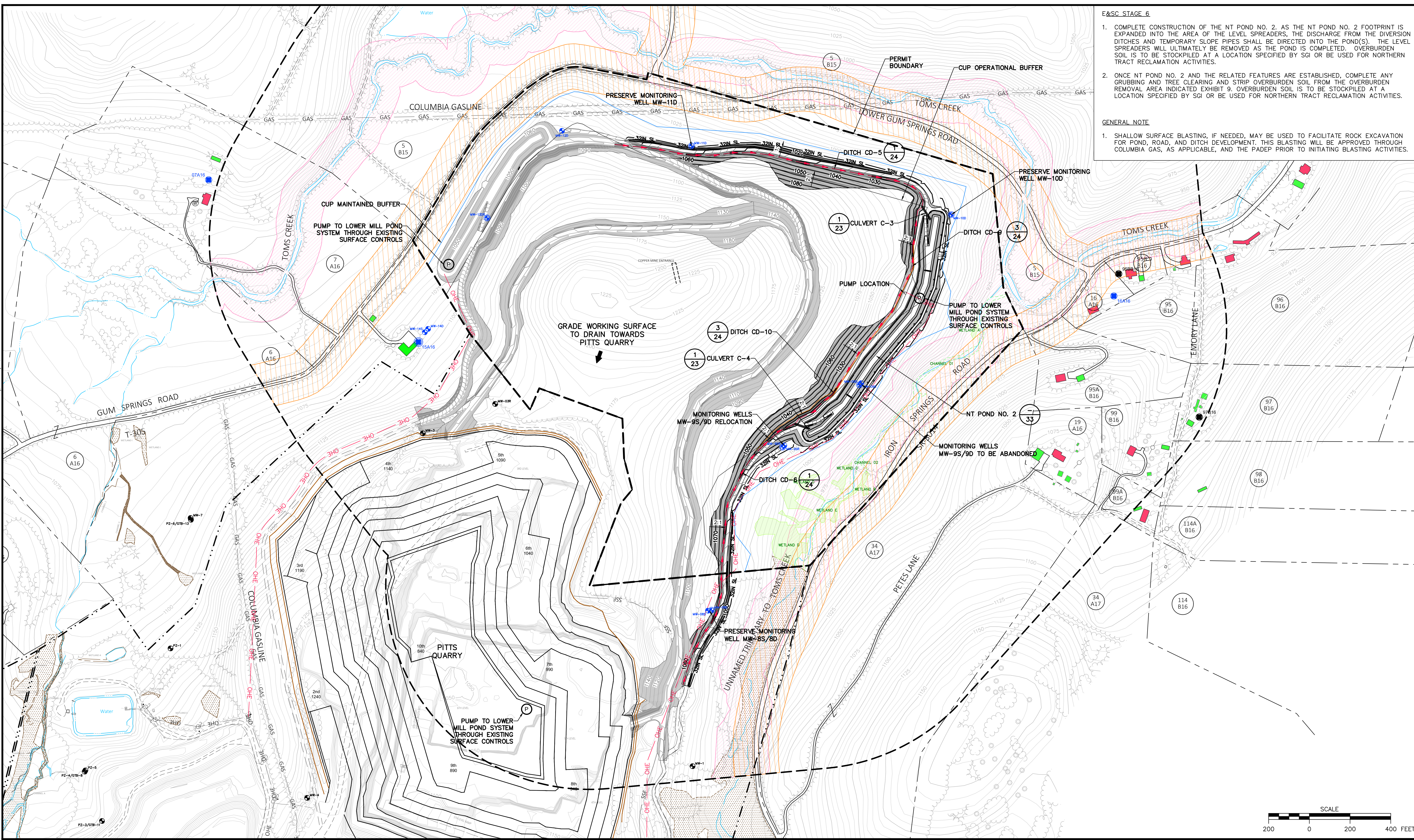
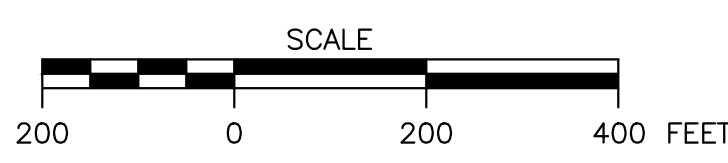


Wednesday, January 3, 2018 4:48:46 PM

R: 2015152596 - SGI Disposal Embankment Drawings Northern Tract Exhibit 12-E&SC Stage 6-R0.dwg

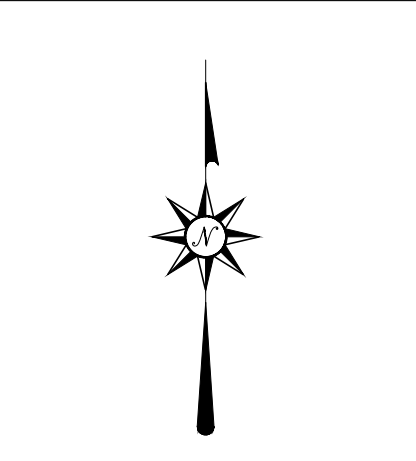
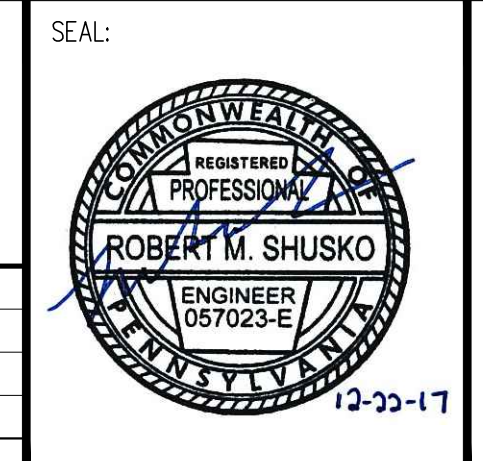


- E&SC STAGE 6**
1. COMPLETE CONSTRUCTION OF THE NT POND NO. 2. AS THE NT POND NO. 2 FOOTPRINT IS EXPANDED INTO THE AREA OF THE LEVEL SPREADERS, THE DISCHARGE FROM THE DIVERSION DITCHES AND TEMPORARY SLOPE PIPES SHALL BE DIRECTED INTO THE POND(S). THE LEVEL SPREADERS WILL ULTIMATELY BE REMOVED AS THE POND IS COMPLETED. OVERBURDEN SOIL IS TO BE STOCKPILED AT A LOCATION SPECIFIED BY SGI OR BE USED FOR NORTHERN TRACT RECLAMATION ACTIVITIES.
 2. ONCE NT POND NO. 2 AND THE RELATED FEATURES ARE ESTABLISHED, COMPLETE ANY GRUBBING AND TREE CLEARING AND STRIP OVERBURDEN SOIL FROM THE OVERBURDEN REMOVAL AREA INDICATED EXHIBIT 9. OVERBURDEN SOIL IS TO BE STOCKPILED AT A LOCATION SPECIFIED BY SGI OR BE USED FOR NORTHERN TRACT RECLAMATION ACTIVITIES.
- GENERAL NOTE**
1. SHALLOW SURFACE BLASTING, IF NEEDED, MAY BE USED TO FACILITATE ROCK EXCAVATION FOR POND, ROAD, AND DITCH DEVELOPMENT. THIS BLASTING WILL BE APPROVED THROUGH COLUMBIA GAS, AS APPLICABLE, AND THE PADEP PRIOR TO INITIATING BLASTING ACTIVITIES.



NOTES / REVISIONS

REV.	DATE	ISSUED FOR	REVISION DESCRIPTION	MADE BY	CHKD BY	DATE
1						
2						
3						
4						



D'APPOLONIA
 701 RUDI ROAD, FLOOR 2
 PITTSBURGH, PENNSYLVANIA 15235-4559
 (412) 856-9440 FAX (412) 856-8535

SKELLY AND LOY
 ENGINEERING - ENVIRONMENTAL
 CONSULTANTS

PROJECT NUMBER: 152596A
 FILE NAME: Exhibit 12-E&SC Stage 6-R0.dwg

SGI

DRAWN BY: AJM
 CHECKED BY: RMS/MDW
 DATE: 12/14/2017
 DATE: 12/22/2017

SPECIALTY GRANULES LLC
CHARMIAN - NORTHERN TRACT QUARRY

EXHIBIT 12
 E&SC STAGE 6

SCALE: AS SHOWN
 DRAWING NO. 18
 REV 0