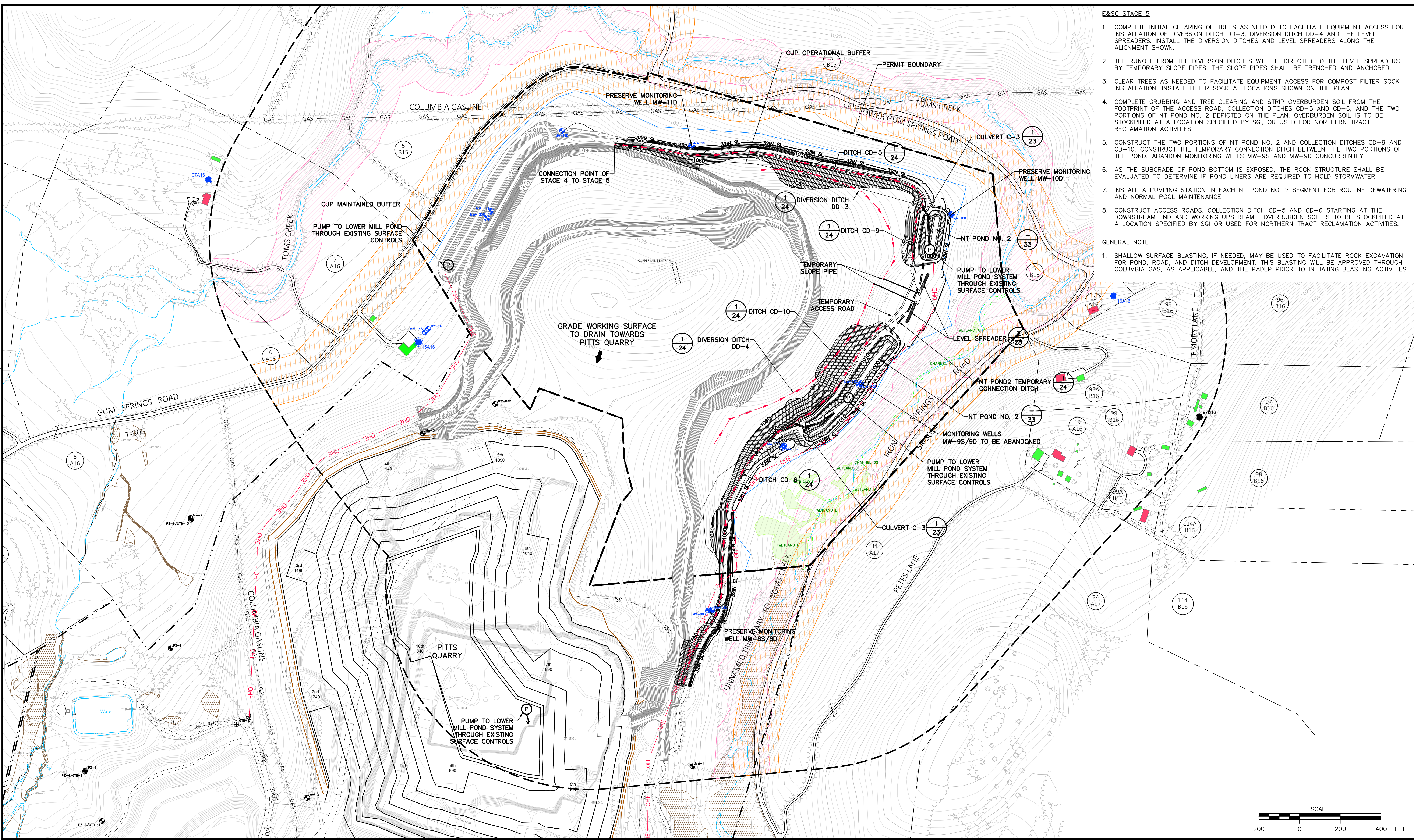


Wednesday, January 3, 2018 4:35:37 PM

R: 2015152596 - SGI Disposal Embankment Drawings Northern Tract Exhibit 12-E&SC Stage 5-R0.dwg

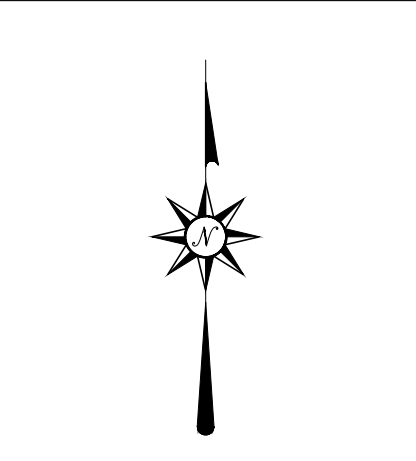


- E&SC STAGE 5**
1. COMPLETE INITIAL CLEARING OF TREES AS NEEDED TO FACILITATE EQUIPMENT ACCESS FOR INSTALLATION OF DIVERSION DITCH DD-3, DIVERSION DITCH DD-4 AND THE LEVEL SPREADERS. INSTALL THE DIVERSION DITCHES AND LEVEL SPREADERS ALONG THE ALIGNMENT SHOWN.
 2. THE RUNOFF FROM THE DIVERSION DITCHES WILL BE DIRECTED TO THE LEVEL SPREADERS BY TEMPORARY SLOPE PIPES. THE SLOPE PIPES SHALL BE TRENCHED AND ANCHORED.
 3. CLEAR TREES AS NEEDED TO FACILITATE EQUIPMENT ACCESS FOR COMPOST FILTER SOCK INSTALLATION. INSTALL FILTER SOCK AT LOCATIONS SHOWN ON THE PLAN.
 4. COMPLETE GRUBBING AND TREE CLEARING AND STRIP OVERBURDEN SOIL FROM THE FOOTPRINT OF THE ACCESS ROAD, COLLECTION DITCHES CD-5 AND CD-6, AND THE TWO PORTIONS OF NT POND NO. 2 DEPICTED ON THE PLAN. OVERBURDEN SOIL IS TO BE STOCKPILED AT A LOCATION SPECIFIED BY SGI, OR USED FOR NORTHERN TRACT RECLAMATION ACTIVITIES.
 5. CONSTRUCT THE TWO PORTIONS OF NT POND NO. 2 AND COLLECTION DITCHES CD-9 AND CD-10. CONSTRUCT THE TEMPORARY CONNECTION DITCH BETWEEN THE TWO PORTIONS OF THE POND. ABANDON MONITORING WELLS MW-9S AND MW-9D CONCURRENTLY.
 6. AS THE SUBGRADE OF POND BOTTOM IS EXPOSED, THE ROCK STRUCTURE SHALL BE EVALUATED TO DETERMINE IF POND LINERS ARE REQUIRED TO HOLD STORMWATER.
 7. INSTALL A PUMPING STATION IN EACH NT POND NO. 2 SEGMENT FOR ROUTINE DEWATERING AND NORMAL POOL MAINTENANCE.
 8. CONSTRUCT ACCESS ROADS, COLLECTION DITCH CD-5 AND CD-6 STARTING AT THE DOWNSTREAM END AND WORKING UPSTREAM. OVERBURDEN SOIL IS TO BE STOCKPILED AT A LOCATION SPECIFIED BY SGI OR USED FOR NORTHERN TRACT RECLAMATION ACTIVITIES.
- GENERAL NOTE**
1. SHALLOW SURFACE BLASTING, IF NEEDED, MAY BE USED TO FACILITATE ROCK EXCAVATION FOR POND, ROAD, AND DITCH DEVELOPMENT. THIS BLASTING WILL BE APPROVED THROUGH COLUMBIA GAS, AS APPLICABLE, AND THE PADEP PRIOR TO INITIATING BLASTING ACTIVITIES.

NOTES / REVISIONS

REV.	DATE	ISSUED FOR	REVISION DESCRIPTION	MADE BY	CHKD BY	DATE
1						
2						
3						
4						

SEAL:



D'APPOLONIA
701 RUDI ROAD, FLOOR 2
PITTSBURGH, PENNSYLVANIA 15235-4559
(412) 856-9440 FAX (412) 856-9535

SKELLY AND LOY
ENGINEERING - ENVIRONMENTAL
CONSULTANTS

SGI

PROJECT NUMBER: 152596A
FILE NAME: Exhibit 12-E&SC Stage 5-R0.dwg

DRAWN BY: AJM
CHECKED BY: RMS/MDW

DATE: 11/21/2016
DATE: 12/22/2017

SPECIALTY GRANULES LLC
CHARMIAN - NORTHERN TRACT QUARRY

EXHIBIT 12
E&SC STAGE 5

SCALE: AS SHOWN
DRAWING NO. 17
REV 0