

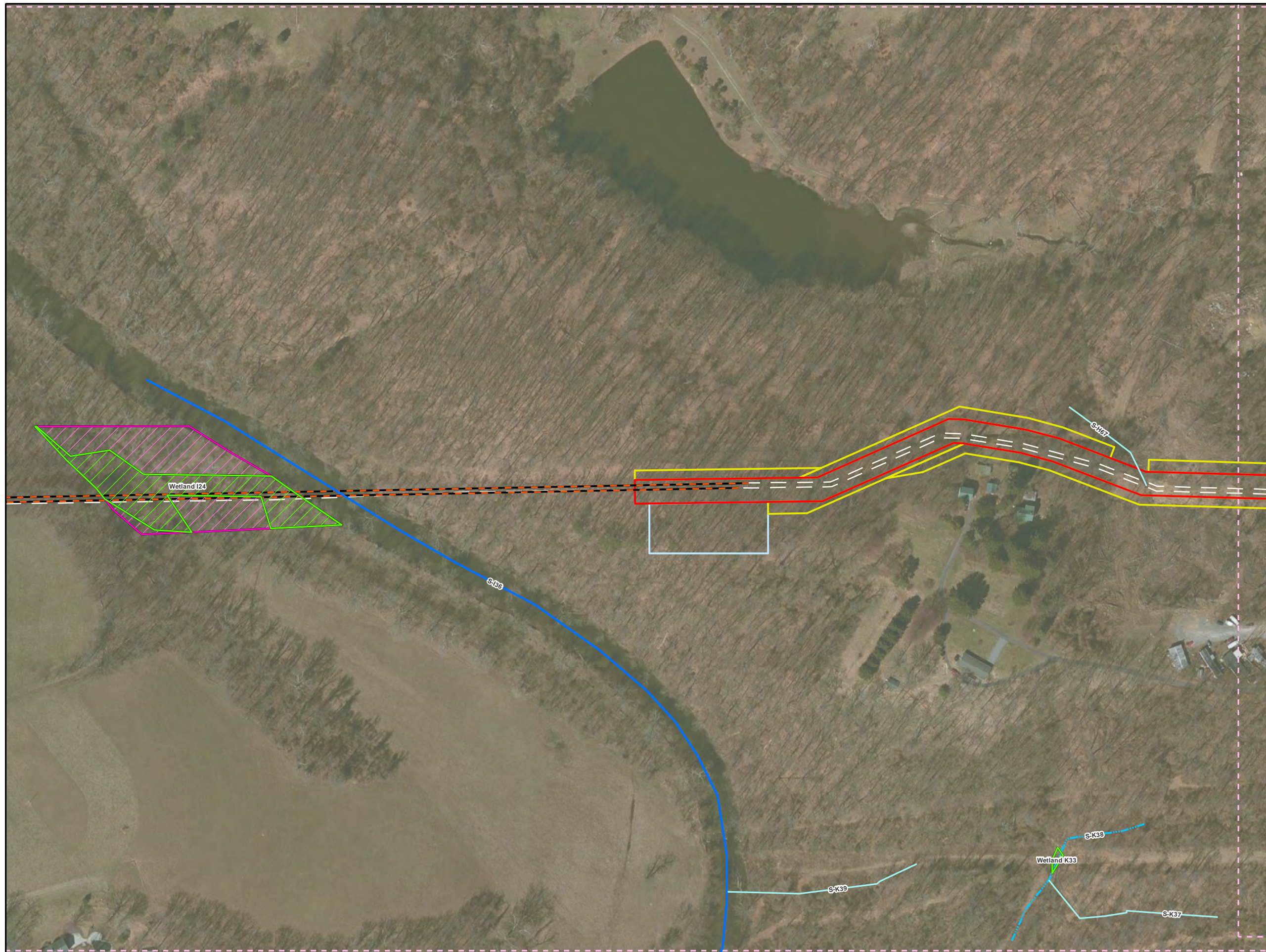
SPLP has made revisions to the proposed workspaces in York County since submittal of the original application. These revisions have been the result of landowner requests, agency requests, the avoidance of sensitive species or their habitats, and/or to further reduce impacts to aquatic resources. The additions and subtractions to the workspaces are listed and quantified within Table 1. In addition, this attachment highlights the location and extent of these additions and subtractions to the workspaces on a set of site plans. Each addition/subtraction has been assigned an identification code and that code is reflected below and on the set of site plans. The additions and subtractions are listed from west to east. A total of approximately 1.59 acres was added and 0.71 acres subtracted for a net increase of 0.88 acres of earth disturbance.

Table 1. Pennsylvania Pipeline Project LOD Additions and Subtractions.

CHANGE ID	COUNTY	REASON FOR CHANGE	ACREAGE	LOD ADDITION OR SUBTRACTION	WETLAND DELINEATION ¹	PNDI EVALUATION ²	SHEET NUMBER	E&S SHEET NUMBER
Add-113	YORK	Minor deviation to accommodate landowner request. No additional aquatic resource impacts	0.42	Addition	Yes	Yes ^A	7	4.10
Sub-136	YORK	Minor reroute in this are at landowners request	0.38	Subtraction	NA	NA	7	4.10
Sub-137	YORK	Minor LOD adjustment needed to facilitate safe installation	0.04	Subtraction	NA	NA	7	4.10
Add-114	YORK	Minor LOD adjustment needed to facilitate safe installation	0.15	Addition	Yes	Yes ^A	7	4.11
Add-115	YORK	Tree clearing only LOD added to maximize aerial DOT inspections	0.29	Addition	Yes	Yes ^A	7	4.11
Sub-138	YORK	Temporary access no longer needed, reducing impacts to wetlands	0.29	Subtraction	NA	NA	11	4.17
Add-116	YORK	Minor LOD adjustment needed to facilitate safe installation	0.07	Addition	Yes	Yes ^A	13	4.20
Add-117	YORK	Additional workspace determined to be available and helpful to allow safe installation. Additional floodway impacts.	0.66	Addition	Yes	Yes ^A	13	4.20

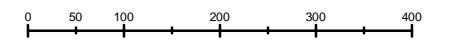
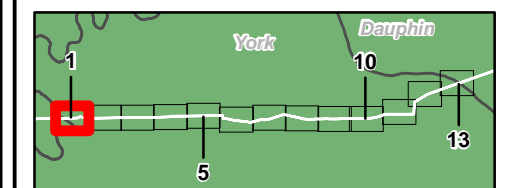
1 – The added area was field investigated for aquatic resources. Not applicable is listed for LOD subtractions.

2 – The added area was originally evaluated for PNDI^A or PNDI was revisited through interim correspondence and analysis^B. Not applicable is listed for LOD subtractions.



Legend

- Added Workspace
- Removed Workspace
- Sheet Boundary
- Centerline 1
- Centerline 2
- Centerline 1 HDD
- Centerline 2 HDD
- Ephemeral Stream
- Intermittent Stream
- Perennial Stream
- Pond
- PEM Wetland
- PFO Wetland
- PSS Wetland
- Permanent ROW
- Temporary ROW
- ATWS
- Block Valve Setting LOD
- Existing Block Valve Setting
- Permanent Access Road
- Temporary Access Road
- Clearing Only
- Travel Only
- Road



1 inch = 200 feet

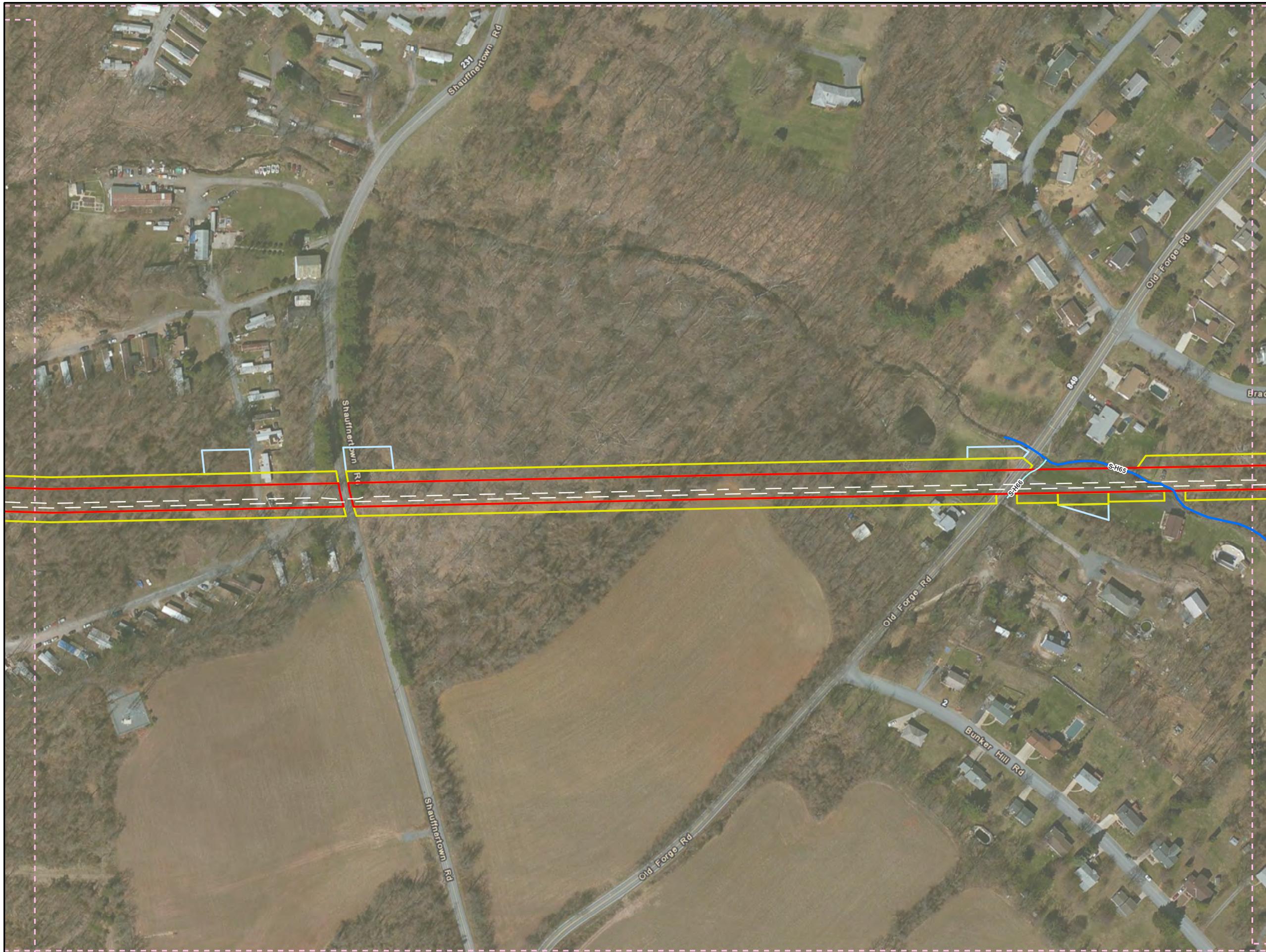
**Workspace Changes for the Sunoco
Pennsylvania Pipeline Project,
York County, PA.
Sheet 1 of 13**

Prepared By: 	Date: 03/2016
-------------------------	--------------------------------

Base Map; ESRI ArcGIS Online, Roads from NRCS Geospatial Data Giveaway.

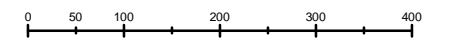
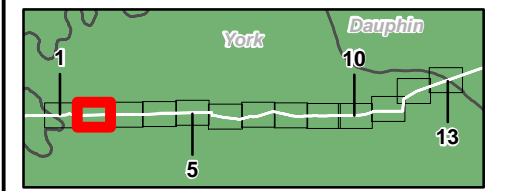
Coordinate System: NAD 83 Stateplane, PA South, Feet

P:\GIS\Projects\1121C5958-PPP\10\XDF\Permits\Addition_Subtraction\PerCountyAddition_Subtraction.mxd



Legend

- Added Workspace
- Removed Workspace
- Sheet Boundary
- Centerline 1
- Centerline 2
- Centerline 1 HDD
- Centerline 2 HDD
- Ephemeral Stream
- Intermittent Stream
- Perennial Stream
- Pond
- PEM Wetland
- PFO Wetland
- PSS Wetland
- Permanent ROW
- Temporary ROW
- ATWS
- Block Valve Setting LOD
- Existing Block Valve Setting
- Permanent Access Road
- Temporary Access Road
- Clearing Only
- Travel Only
- Road



1 inch = 200 feet

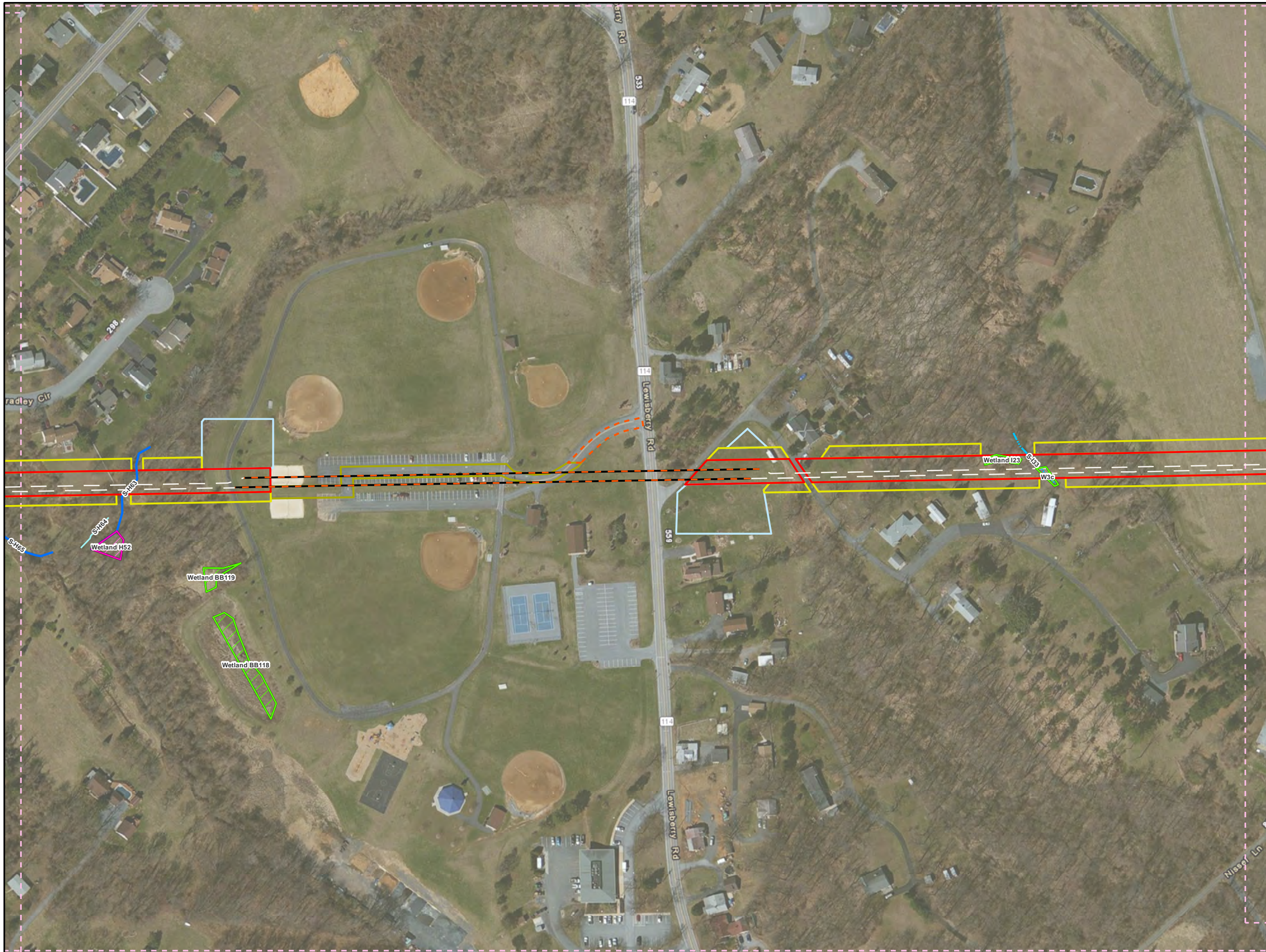
**Workspace Changes for the Sunoco
Pennsylvania Pipeline Project,
York County, PA.
Sheet 2 of 13**

Prepared By: 	Date: 03/2016
-------------------------	--------------------------------

Base Map; ESRI ArcGIS Online, Roads from NRCS Geospatial Data Giveaway.

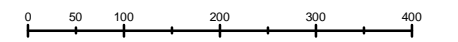
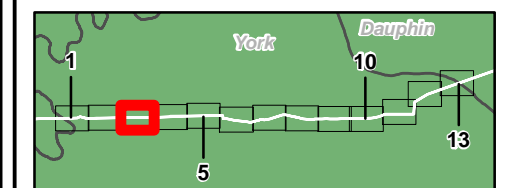
Coordinate System: NAD 83 Stateplane, PA South, Feet

P:\GIS\Projects\1121C5958-PPP\7\XDF\Permits\Addition_Subtraction\Addition_Subtraction.mxd



Legend

- Added Workspace
- Removed Workspace
- Sheet Boundary
- Centerline 1
- Centerline 2
- Centerline 1 HDD
- Centerline 2 HDD
- Ephemeral Stream
- Intermittent Stream
- Perennial Stream
- Pond
- PEM Wetland
- PFO Wetland
- PSS Wetland
- Permanent ROW
- Temporary ROW
- ATWS
- Block Valve Setting LOD
- Existing Block Valve Setting
- Permanent Access Road
- Temporary Access Road
- Clearing Only
- Travel Only
- Road



1 inch = 200 feet

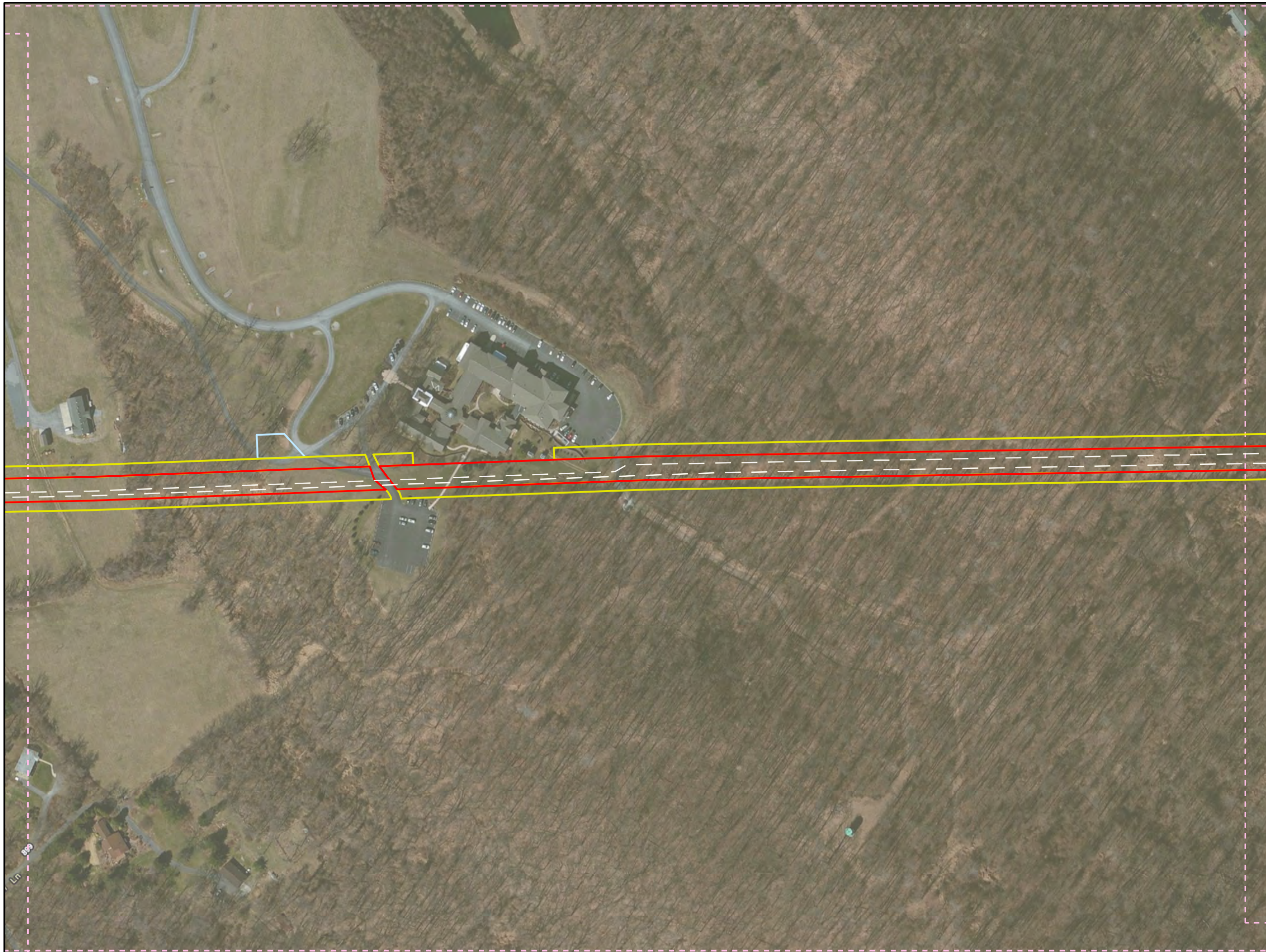
**Workspace Changes for the Sunoco
Pennsylvania Pipeline Project,
York County, PA.
Sheet 3 of 13**

Prepared By: 	Date: 03/2016
-------------------------	--------------------------------

Base Map; ESRI ArcGIS Online, Roads from NRCS Geospatial Data Giveaway.

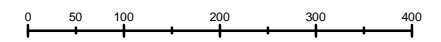
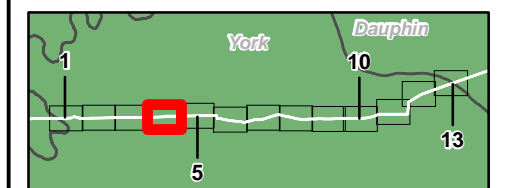
Coordinate System: NAD 83 Stateplane, PA South, Feet

P:\GIS\Projects\1121C55558-PPP\10\XDF\Permits\Addition - Subtraction.mxd



Legend

- Added Workspace
- Removed Workspace
- Sheet Boundary
- Centerline 1
- Centerline 2
- Centerline 1 HDD
- Centerline 2 HDD
- Ephemeral Stream
- Intermittent Stream
- Perennial Stream
- Pond
- PEM Wetland
- PFO Wetland
- PSS Wetland
- Permanent ROW
- Temporary ROW
- ATWS
- Block Valve Setting LOD
- Existing Block Valve Setting
- Permanent Access Road
- Temporary Access Road
- Clearing Only
- Travel Only
- Road



1 inch = 200 feet

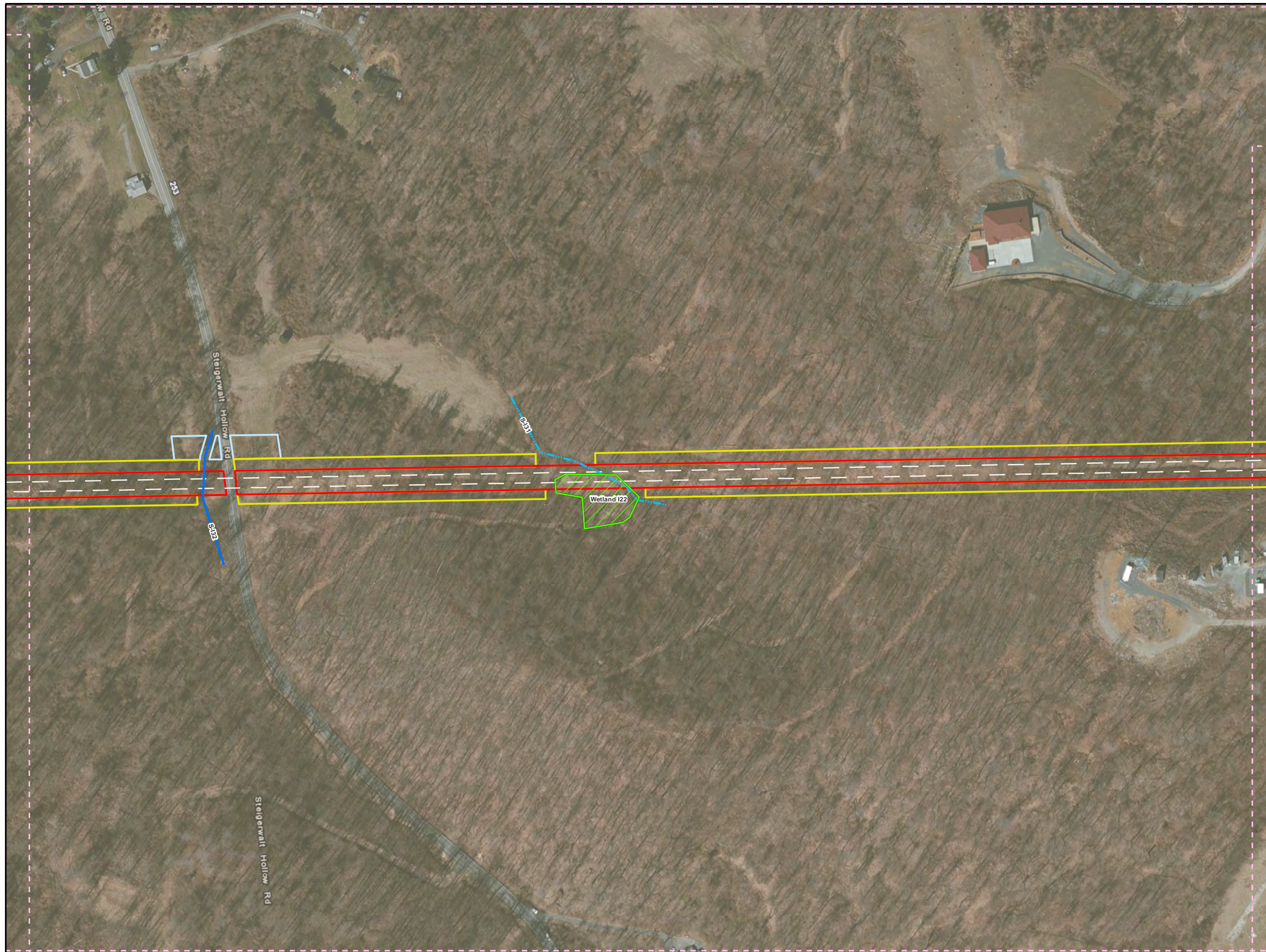
**Workspace Changes for the Sunoco
Pennsylvania Pipeline Project,
York County, PA.
Sheet 4 of 13**

Prepared By: 	Date: 03/2016
-------------------------	--------------------------------

Base Map; ESRI ArcGIS Online, Roads from NRCS Geospatial Data Giveaway.

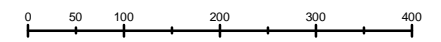
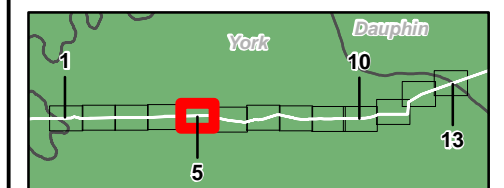
Coordinate System: NAD 83 Stateplane, PA South, Feet

P:\GIS\Projects\1121C5958-PPP\10\XD\Fermitis\Addition_Subtraction\PerCountyAddition_Subtraction.mxd



Legend

- Added Workspace
- Removed Workspace
- Sheet Boundary
- Centerline 1
- Centerline 2
- Centerline 1 HDD
- Centerline 2 HDD
- Ephemeral Stream
- Intermittent Stream
- Perennial Stream
- Pond
- PEM Wetland
- PFO Wetland
- PSS Wetland
- Permanent ROW
- Temporary ROW
- ATWS
- Block Valve Setting LOD
- Existing Block Valve Setting
- Permanent Access Road
- Temporary Access Road
- Clearing Only
- Travel Only
- Road



1 inch = 200 feet

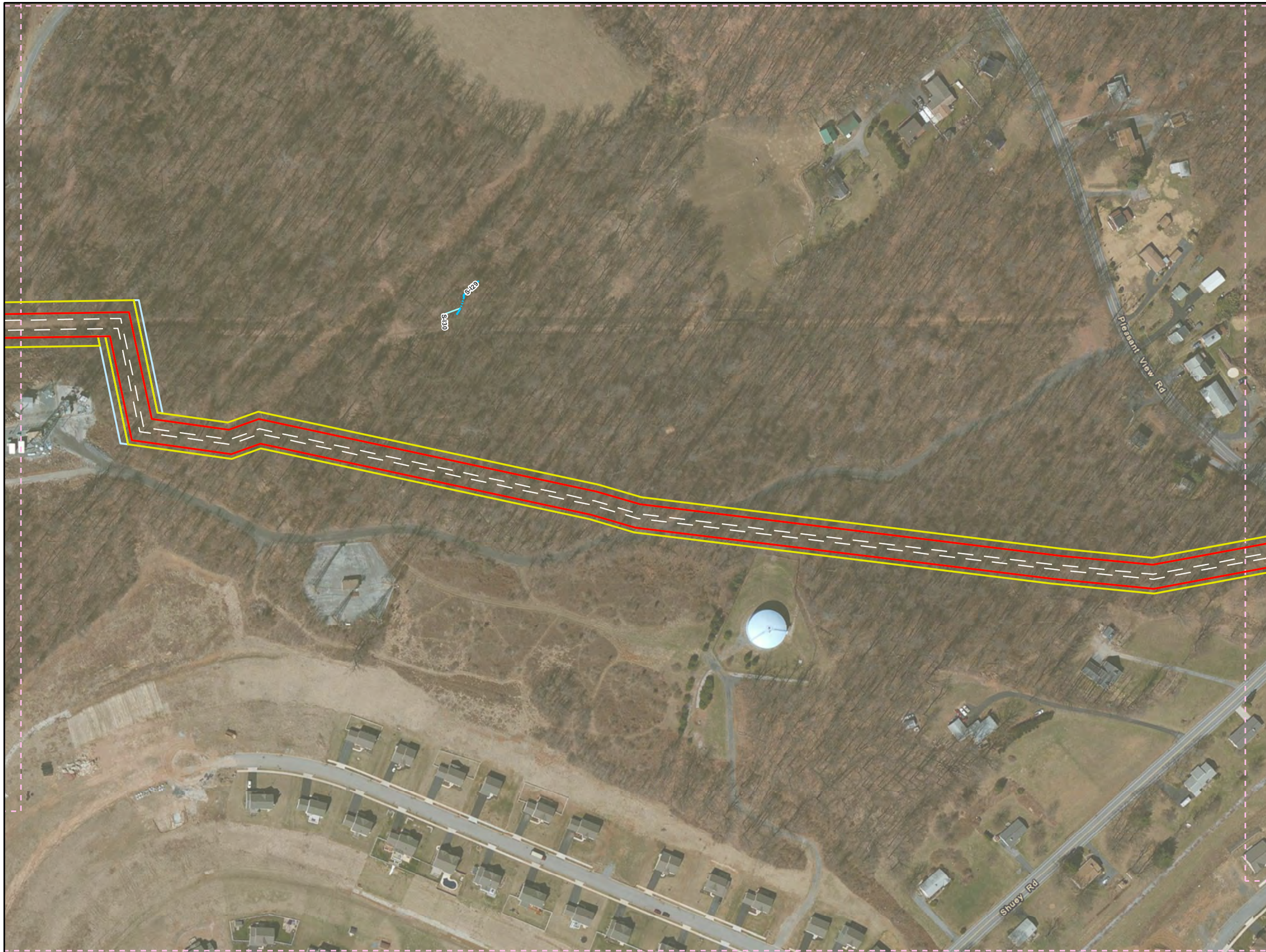
**Workspace Changes for the Sunoco
Pennsylvania Pipeline Project,
York County, PA.
Sheet 5 of 13**

Prepared By: 	Date: 03/2016
-------------------------	--------------------------------

Base Map; ESRI ArcGIS Online, Roads from NRCS Geospatial Data Giveaway.

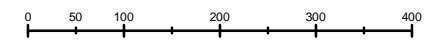
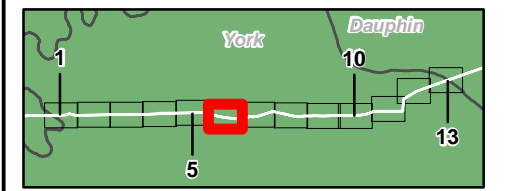
Coordinate System: NAD 83 Stateplane, PA South, Feet

P:\GIS\Projects\1121C5958-PPP\10\XDF\Permits\Addition - Subtraction\PerCountyAddition_Subtraction.mxd



Legend

- Added Workspace
- Removed Workspace
- Sheet Boundary
- Centerline 1
- Centerline 2
- Centerline 1 HDD
- Centerline 2 HDD
- Ephemeral Stream
- Intermittent Stream
- Perennial Stream
- Pond
- PEM Wetland
- PFO Wetland
- PSS Wetland
- Permanent ROW
- Temporary ROW
- ATWS
- Block Valve Setting LOD
- Existing Block Valve Setting
- Permanent Access Road
- Temporary Access Road
- Clearing Only
- Travel Only
- Road



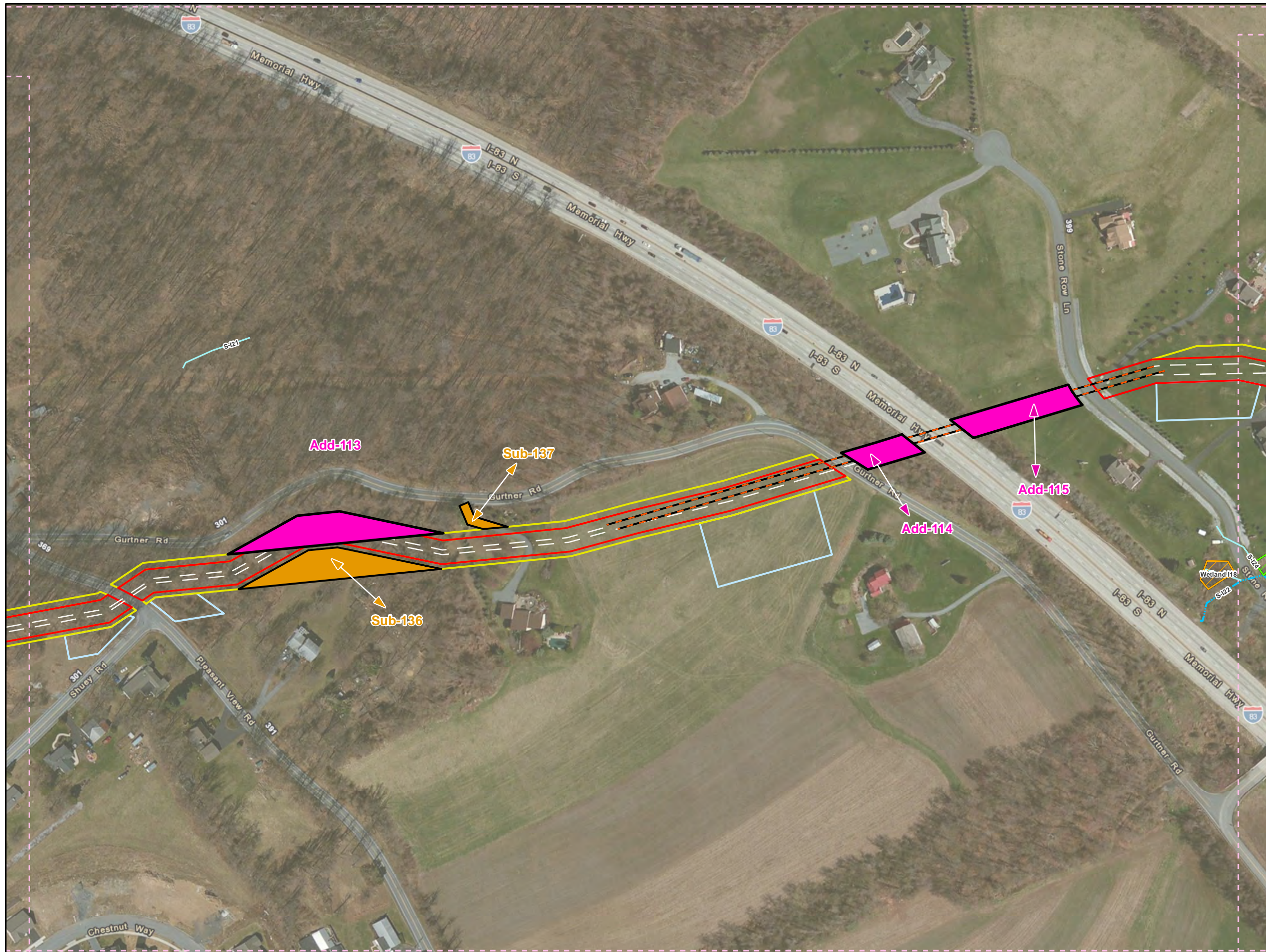
1 inch = 200 feet

**Workspace Changes for the Sunoco
Pennsylvania Pipeline Project,
York County, PA.
Sheet 6 of 13**

Prepared By: 	Date: 03/2016
------------------	-------------------------

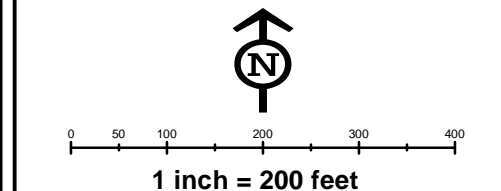
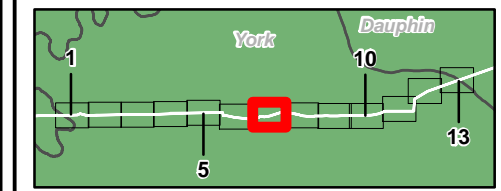
Base Map; ESRI ArcGIS Online, Roads from NRCS Geospatial Data Giveaway.
 Coordinate System: NAD 83 Stateplane, PA South, Feet

P:\GIS\Projects\1121C5958-PPP\7\XDF\Permits\Addition_Subtraction\PerCounty\Addition_Subtraction.mxd



Legend

- Added Workspace
- Removed Workspace
- Sheet Boundary
- Centerline 1
- Centerline 2
- Centerline 1 HDD
- Centerline 2 HDD
- Ephemeral Stream
- Intermittent Stream
- Perennial Stream
- Pond
- PEM Wetland
- PFO Wetland
- PSS Wetland
- Permanent ROW
- Temporary ROW
- ATWS
- Block Valve Setting LOD
- Existing Block Valve Setting
- Permanent Access Road
- Temporary Access Road
- Clearing Only
- Travel Only
- Road

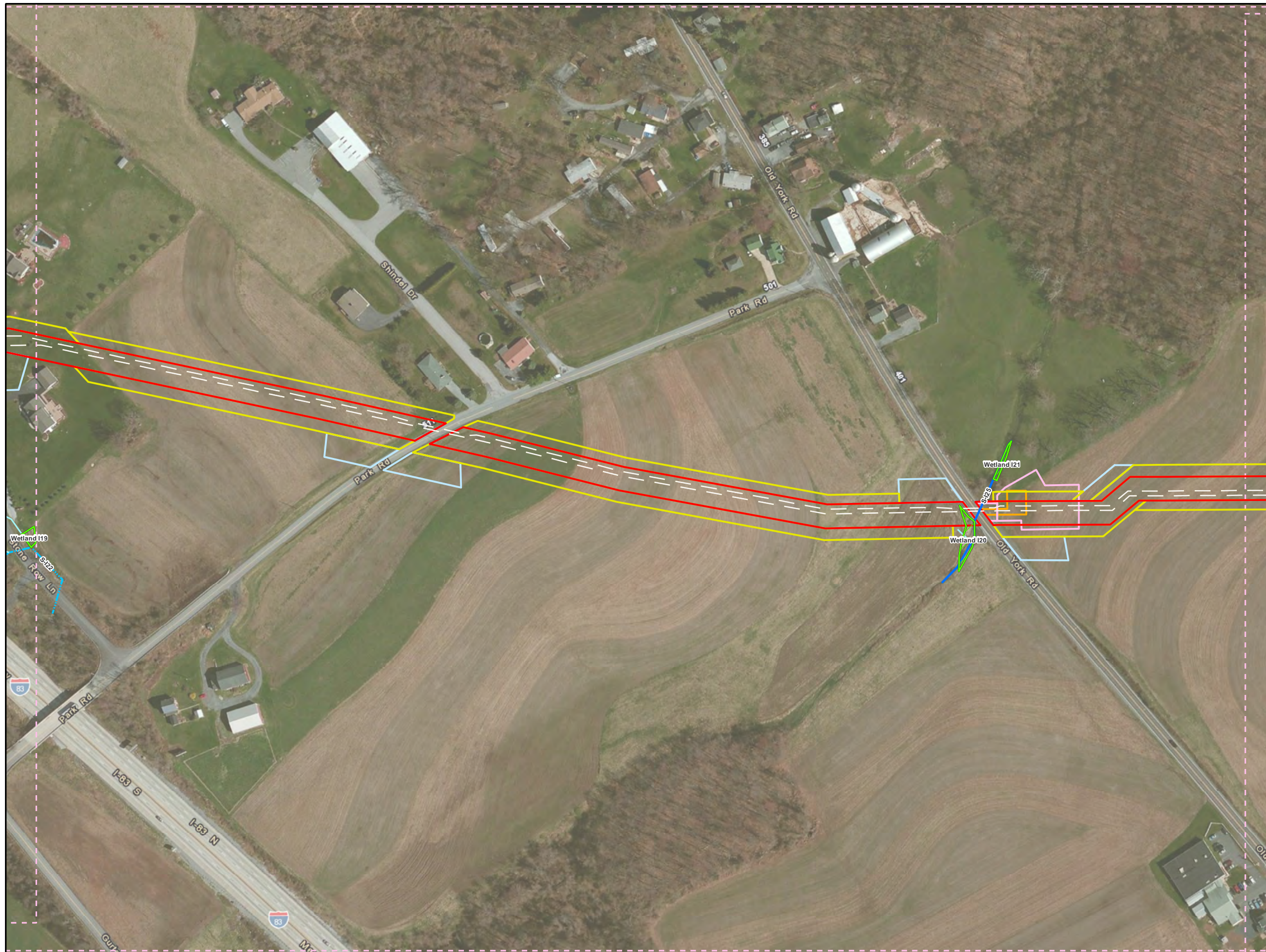


**Workspace Changes for the Sunoco
Pennsylvania Pipeline Project,
York County, PA.
Sheet 7 of 13**

Prepared By: 	Date: 03/2016
-------------------------	--------------------------------

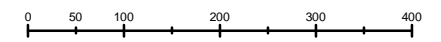
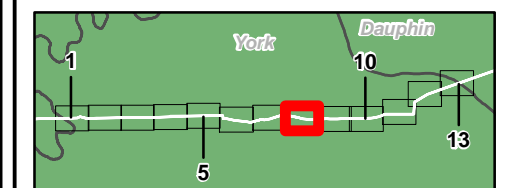
Base Map; ESRI ArcGIS Online, Roads from NRCS Geospatial Data Giveaway.
 Coordinate System: NAD 83 Stateplane, PA South, Feet

P:\GIS\Projects\1121C55558-PPP\7\XDF\Permits\Addition_Subtraction\PerCounty\Addition_Subtraction.mxd



Legend

- Added Workspace
- Removed Workspace
- Sheet Boundary
- Centerline 1
- Centerline 2
- Centerline 1 HDD
- Centerline 2 HDD
- Ephemeral Stream
- Intermittent Stream
- Perennial Stream
- Pond
- PEM Wetland
- PFO Wetland
- PSS Wetland
- Permanent ROW
- Temporary ROW
- ATWS
- Block Valve Setting LOD
- Existing Block Valve Setting
- Permanent Access Road
- Temporary Access Road
- Clearing Only
- Travel Only
- Road



1 inch = 200 feet

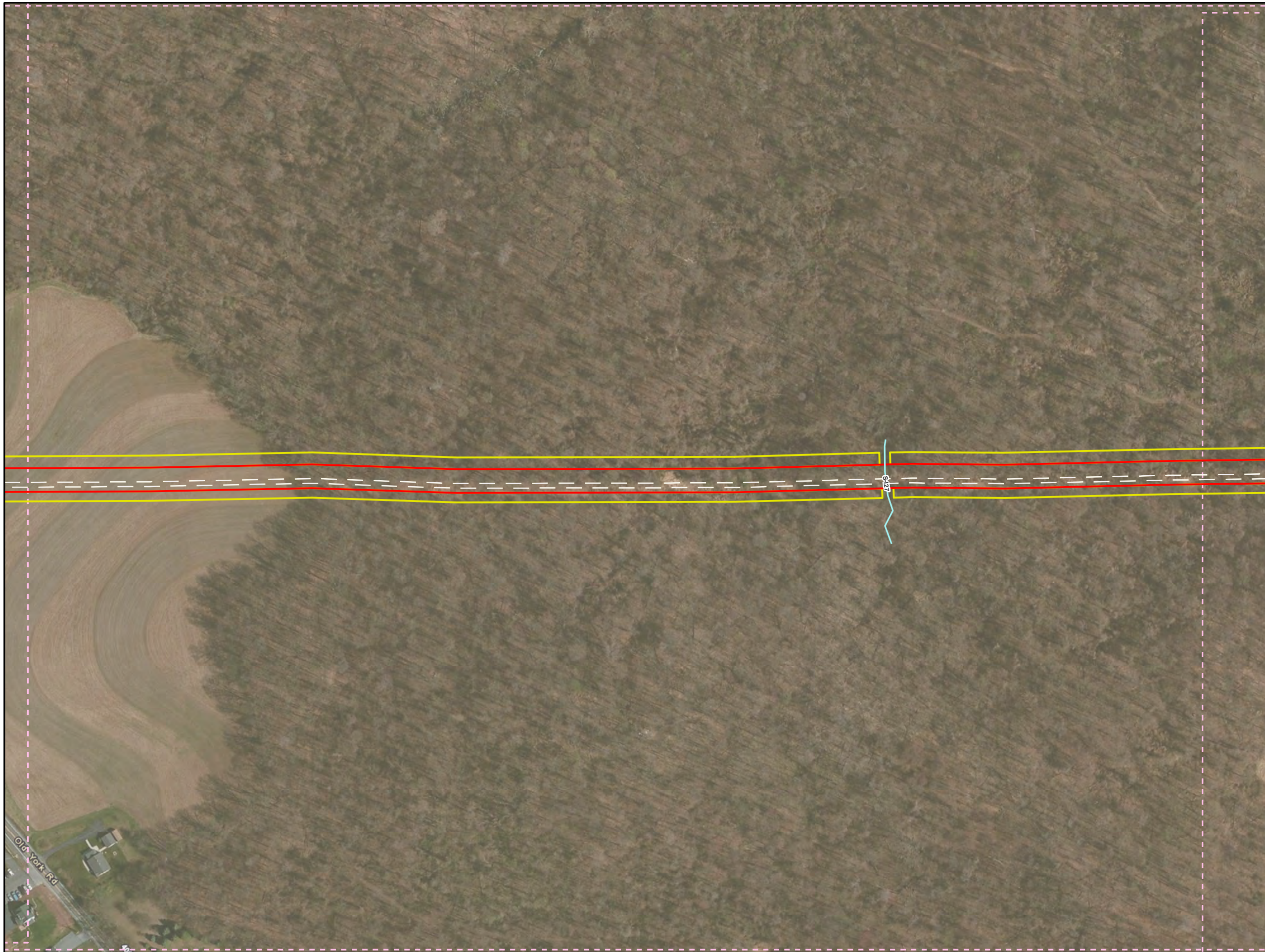
**Workspace Changes for the Sunoco
Pennsylvania Pipeline Project,
York County, PA.
Sheet 8 of 13**

Prepared By: 	Date: 03/2016
-------------------------	--------------------------------

Base Map; ESRI ArcGIS Online, Roads from NRCS Geospatial Data Giveaway.

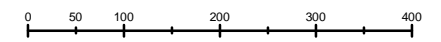
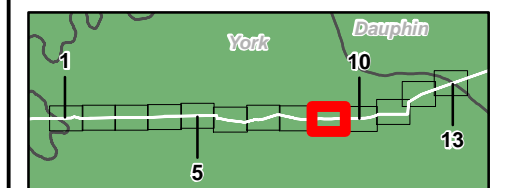
Coordinate System: NAD 83 Stateplane, PA South, Feet

P:\GIS\Projects\1121C59586-PPP\10\XDF\Permits\Addition - Subtraction\PerCountyAddition_Subtraction.mxd



Legend

- Added Workspace
- Removed Workspace
- Sheet Boundary
- Centerline 1
- Centerline 2
- Centerline 1 HDD
- Centerline 2 HDD
- Ephemeral Stream
- Intermittent Stream
- Perennial Stream
- Pond
- PEM Wetland
- PFO Wetland
- PSS Wetland
- Permanent ROW
- Temporary ROW
- ATWS
- Block Valve Setting LOD
- Existing Block Valve Setting
- Permanent Access Road
- Temporary Access Road
- Clearing Only
- Travel Only
- Road



1 inch = 200 feet

**Workspace Changes for the Sunoco
Pennsylvania Pipeline Project,
York County, PA.
Sheet 9 of 13**

Prepared By: 	Date: 03/2016
-------------------------	--------------------------------

Base Map; ESRI ArcGIS Online, Roads from NRCS Geospatial Data Giveaway.

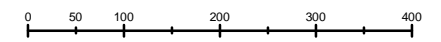
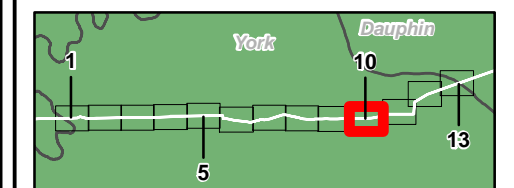
Coordinate System: NAD 83 Stateplane, PA South, Feet

P:\GIS\Projects\1121C59586-PPP\7\10\XDF\Permits\Addition - Subtraction\PerCountyAddition_Subtraction.mxd



Legend

- Added Workspace
- Removed Workspace
- Sheet Boundary
- Centerline 1
- Centerline 2
- Centerline 1 HDD
- Centerline 2 HDD
- Ephemeral Stream
- Intermittent Stream
- Perennial Stream
- Pond
- PEM Wetland
- PFO Wetland
- PSS Wetland
- Permanent ROW
- Temporary ROW
- ATWS
- Block Valve Setting LOD
- Existing Block Valve Setting
- Permanent Access Road
- Temporary Access Road
- Clearing Only
- Travel Only
- Road



1 inch = 200 feet

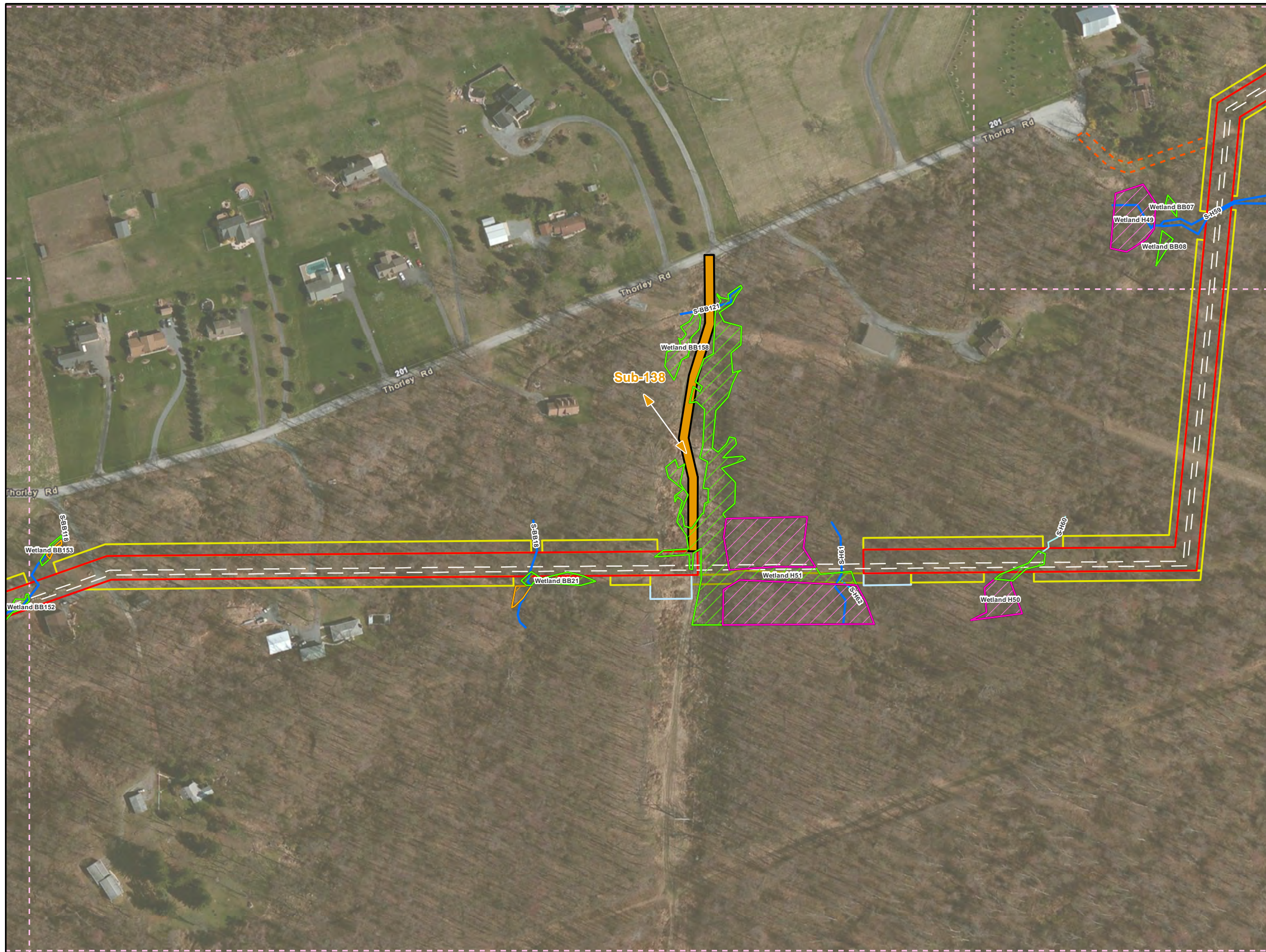
**Workspace Changes for the Sunoco
Pennsylvania Pipeline Project,
York County, PA.
Sheet 10 of 13**

Prepared By: 	Date: 03/2016
-------------------------	--------------------------------

Base Map: ESRI ArcGIS Online, Roads from NRCS Geospatial Data Giveaway.

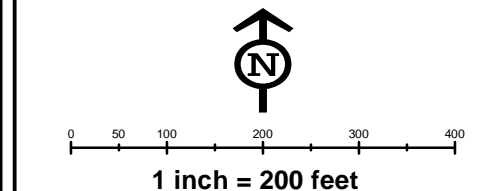
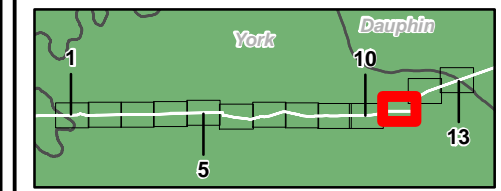
Coordinate System: NAD 83 Stateplane, PA South, Feet

P:\GIS\Projects\1121C5958-PPP\7\XDF\Permits\Addition - Subtraction\PerCounty\Addition_Subtraction.mxd



Legend

- Added Workspace
- Removed Workspace
- Sheet Boundary
- Centerline 1
- Centerline 2
- Centerline 1 HDD
- Centerline 2 HDD
- Ephemeral Stream
- Intermittent Stream
- Perennial Stream
- Pond
- PEM Wetland
- PFO Wetland
- PSS Wetland
- Permanent ROW
- Temporary ROW
- ATWS
- Block Valve Setting LOD
- Existing Block Valve Setting
- Permanent Access Road
- Temporary Access Road
- Clearing Only
- Travel Only
- Road

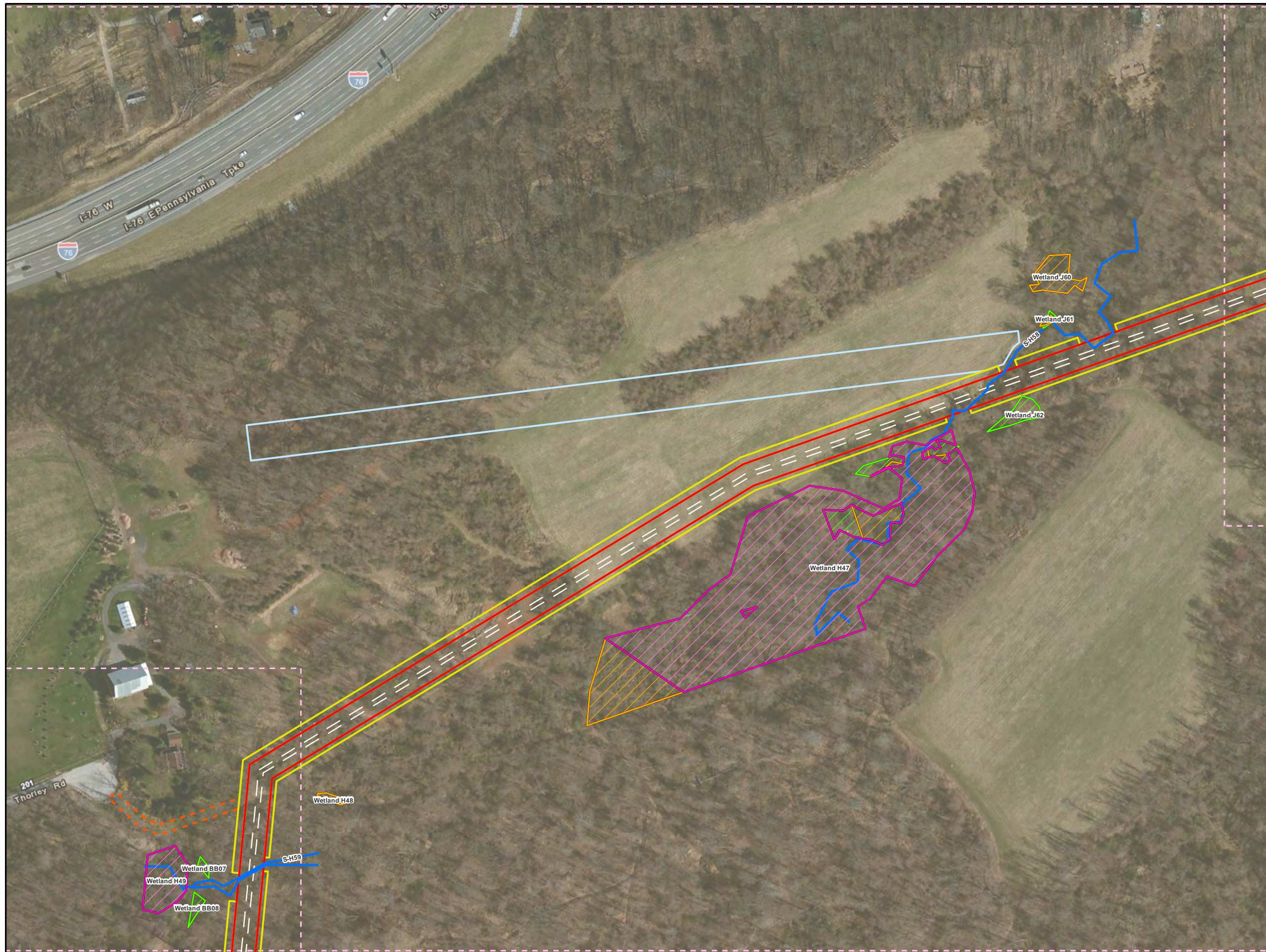


**Workspace Changes for the Sunoco
Pennsylvania Pipeline Project,
York County, PA.
Sheet 11 of 13**

Prepared By: 	Date: 03/2016
-------------------------	--------------------------------

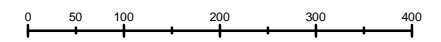
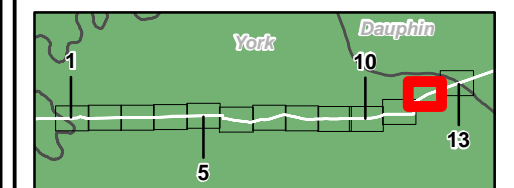
Base Map; ESRI ArcGIS Online, Roads from NRCS Geospatial Data Giveaway.
 Coordinate System: NAD 83 Stateplane, PA South, Feet

P:\GIS\Projects\1121C55558-PPP\7\XDF\Permits\Addition - Subtraction\PerCountyAddition_Subtraction.mxd



Legend

- Added Workspace
- Removed Workspace
- Sheet Boundary
- Centerline 1
- Centerline 2
- Centerline 1 HDD
- Centerline 2 HDD
- Ephemeral Stream
- Intermittent Stream
- Perennial Stream
- Pond
- PEM Wetland
- PFO Wetland
- PSS Wetland
- Permanent ROW
- Temporary ROW
- ATWS
- Block Valve Setting LOD
- Existing Block Valve Setting
- Permanent Access Road
- Temporary Access Road
- Clearing Only
- Travel Only
- Road



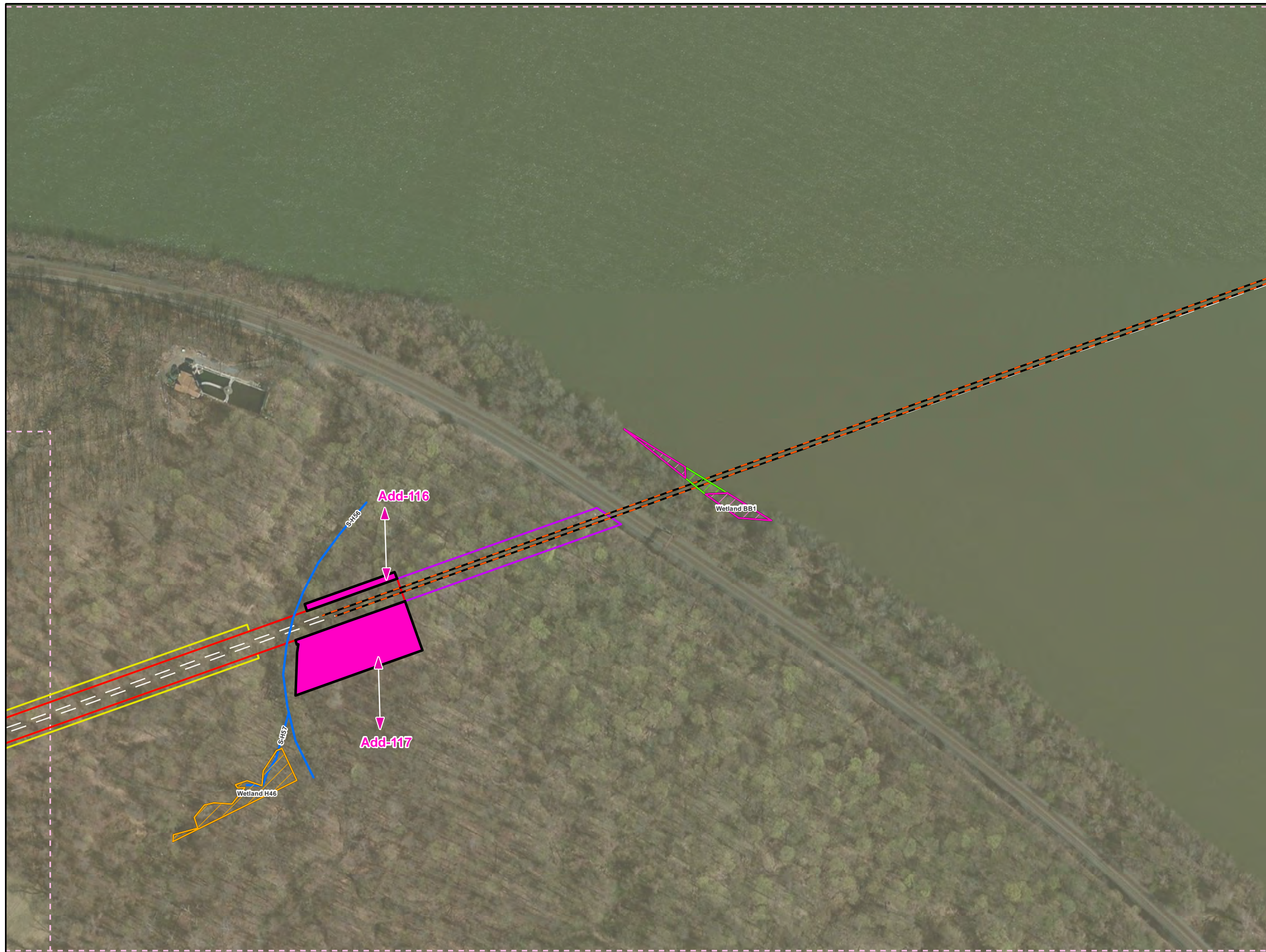
1 inch = 200 feet

Workspace Changes for the Sunoco Pennsylvania Pipeline Project, York County, PA.
Sheet 12 of 13

Prepared By: 	Date: 03/2016
-------------------------	--------------------------------

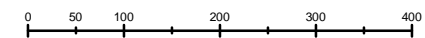
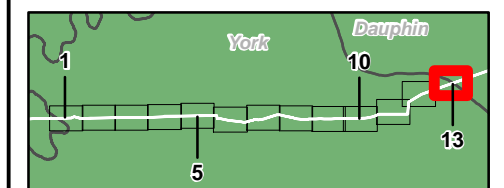
Base Map; ESRI ArcGIS Online, Roads from NRCS Geospatial Data Giveaway.

Coordinate System: NAD 83 Stateplane, PA South, Feet



Legend

- Added Workspace
- Removed Workspace
- Sheet Boundary
- Centerline 1
- Centerline 2
- Centerline 1 HDD
- Centerline 2 HDD
- Ephemeral Stream
- Intermittent Stream
- Perennial Stream
- Pond
- PEM Wetland
- PFO Wetland
- PSS Wetland
- Permanent ROW
- Temporary ROW
- ATWS
- Block Valve Setting LOD
- Existing Block Valve Setting
- Permanent Access Road
- Temporary Access Road
- Clearing Only
- Travel Only
- Road



1 inch = 200 feet

**Workspace Changes for the Sunoco
Pennsylvania Pipeline Project,
York County, PA.
Sheet 13 of 13**

Prepared By:



Date:

03/2016

Base Map; ESRI ArcGIS Online, Roads from NRCS Geospatial Data Giveaway.

Coordinate System: NAD 83 Stateplane, PA South, Feet