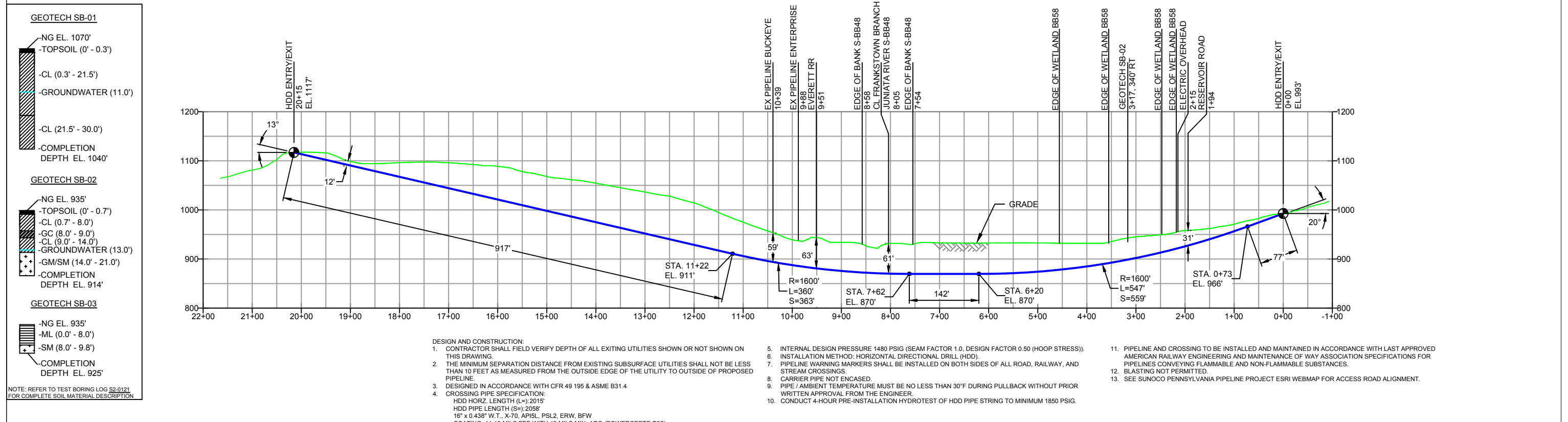


BLAIR COUNTY, PENNSYLVANIA - BLAIR TOWNSHIP
S2-0121-16

PROFILE VIEW



NOTES		REF. DRAWING		REVISIONS		SUNOCO PIPELINE, L.P.	
1. ALL COORDINATES SHOWN ARE IN LATITUDE AND LONGITUDE. ALL MSL ELEVATIONS ARE NAD83	ES-3.32	TO	ES-3.34	EROSION & SEDIMENT PLAN			SUNOCO PIPELINE, L.P.
2. STATIONING IS BASED ON HORIZONTAL DISTANCES	SHEET 20	TO	SHEET 20	AERIAL SITE PLAN			
3. ROONEY ENGINEERING, INC. AND SUNOCO PIPELINE, LP ARE NOT RESPONSIBLE FOR LOCATION OF FOREIGN UTILITIES SHOWN IN PLOT PLAN OR PROFILE. THE INFORMATION SHOWN HEREON IS FURNISHED WITHOUT LIABILITY ON THE PART OF ROONEY ENGINEERING, INC. AND SUNOCO PIPELINE, LP, FOR ANY DAMAGES RESULTING FROM ERRORS OR OMISSIONS THEREIN.				EP1	REVISED PER PADEP COMMENTS	MRS 05/18/16	16-INCH HORIZONTAL DIRECTIONAL DRILL EVERETT RR/ RESERVIOR RD PENNSYLVANIA PIPELINE PROJECT
4. CONTRACTOR IS RESPONSIBLE FOR LOCATING ALL UTILITIES. CONTACT ONE CALL AT 811 PRIOR TO DIGGING.				EP		MRS 11/13/15	
5. SUNOCO EMERGENCY HOTLINE NUMBER IS #1-800-786-7440.				B	ADDED GEOTECH INFO	MRS 09/03/15	
				A	ISSUED FOR BID	MRS 08/14/15	
						MRS 08/14/15	
	DWG NO		DWG NO	DESCRIPTION	NO.	DESCRIPTION	

Sunoco Logistics Partners L.P.

TETRA TECH ROONEY
(303) 792-5911

SCALE: 1"=200' DWG. NO: PA-BL-0001.0048-RR-16