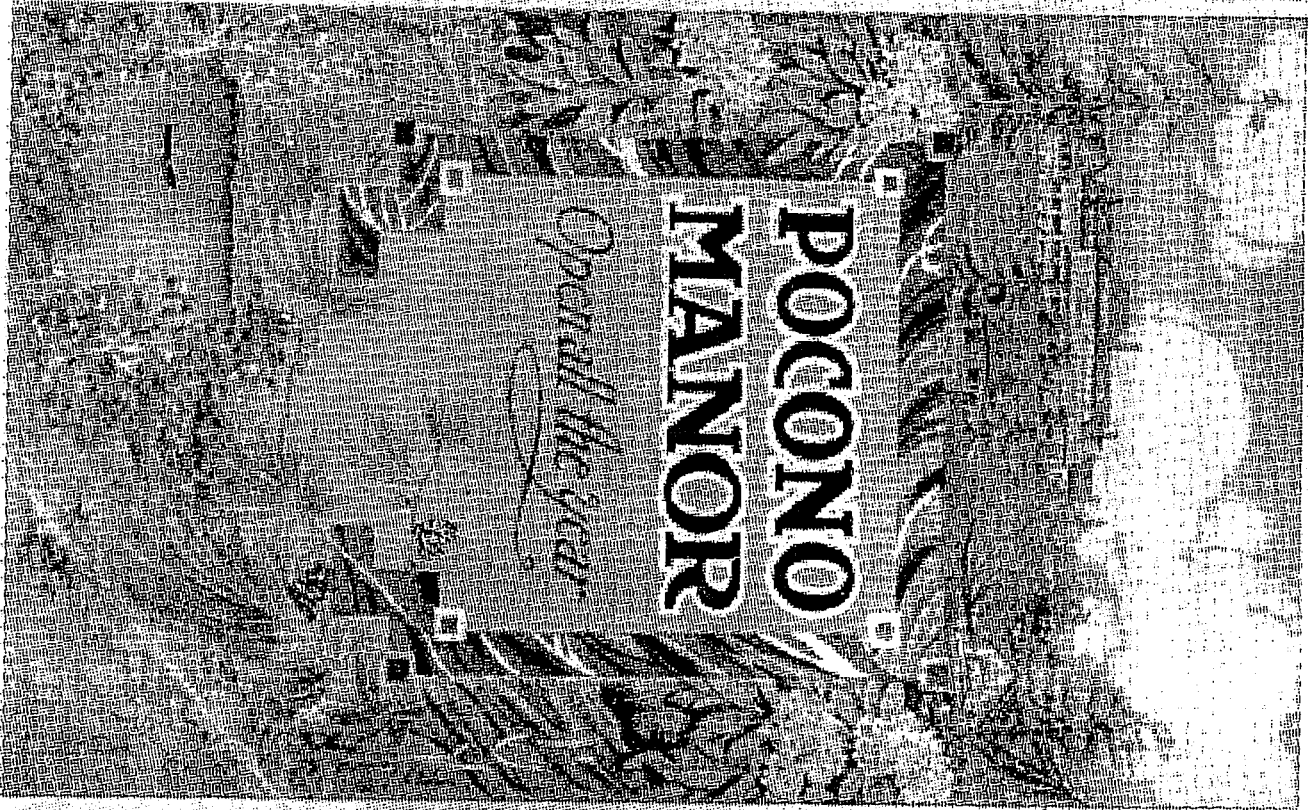
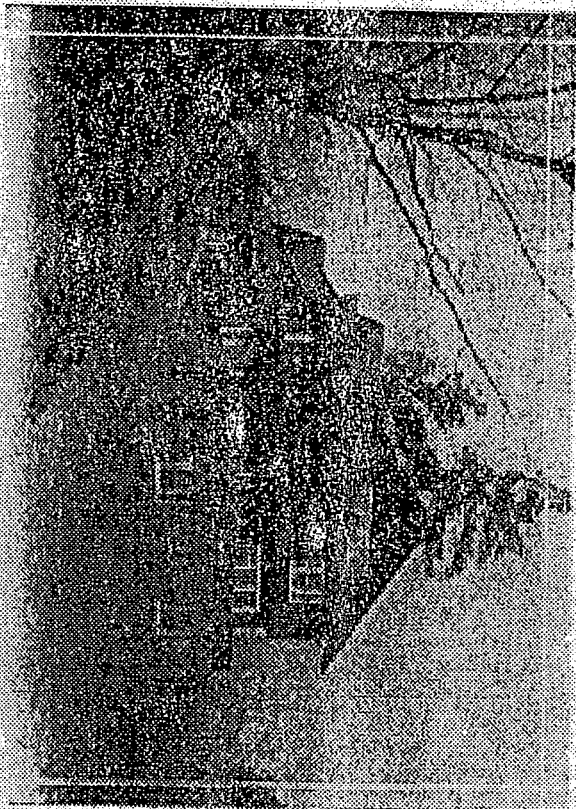


**POCONO
MAJOR**

Original Mixture



X



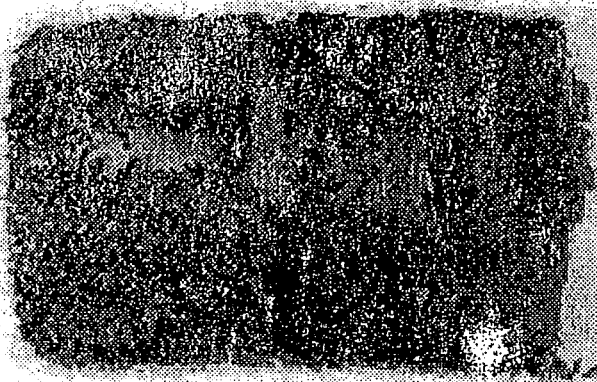
Manor Cottage

POCONO MANOR

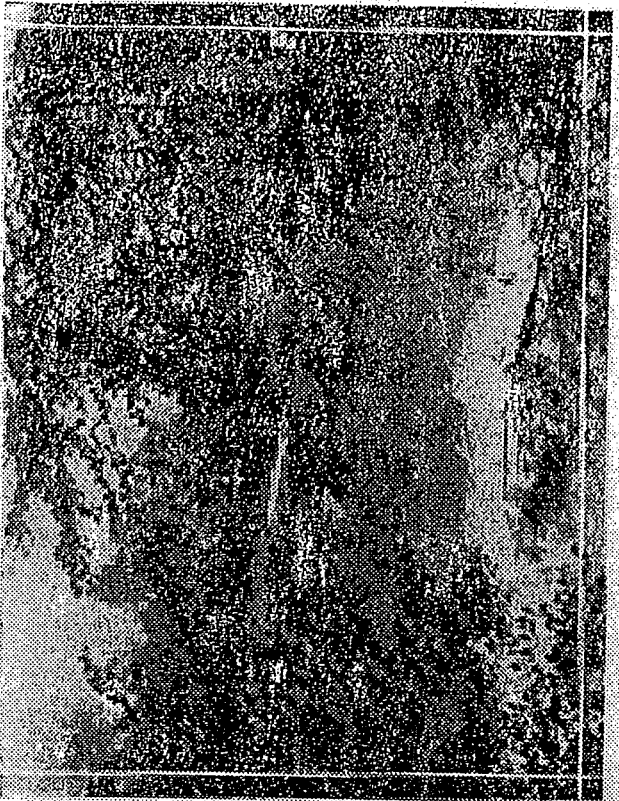
ON the summit of Little Pocomo Mountain, about two miles southeast of Pocomo Summit Station, on the Delaware, Lackawanna & Western Railroad, stands a group of buildings that grows larger every year. It looms up above the surrounding hills, with the round shaft of the water-tower standing out on the mountain's crest, and looking, as a visitor remarked, "like the hub of the universe."

This settlement is POCONO MANOR, a mountain resort which in a few years has come to fill a most important place with a large circle of "Friends and their friends."

POCONO MANOR—which includes Pocomo Manor Inn, the Manor Cottage and surrounding settlement, was established in 1902 as a summer resort for Friends and others of similar tastes, who prefer comfort and refinement to extravagance and ostentation. Its patronage has steadily increased up to the present time.



View of station

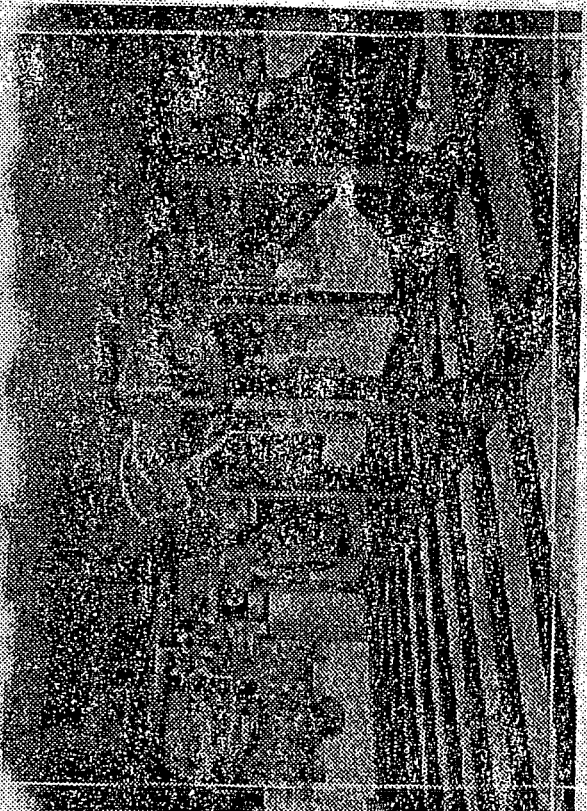


Lake Minnow, near Mountain

POCONO MANOR is in Monroe County, Pennsylvania, one hundred and thirty-six miles by rail from Philadelphia, and one hundred miles from New York City. It is twenty-two miles northwest of the great Delaware Water Gap, and eighteen miles from Stroudsburg.

SURROUNDINGS.—The Inn and cottages are near the center of a tract of seven hundred and fifty acres, acquired for the express purpose of protecting the forest growth, the plants, birds and wild creatures, guarding the purity of the water supply, and preserving all the natural advantages. The large extent of ground belonging to the estate gives unusual opportunities for the enjoyment of nature under peculiarly delightful conditions, and free from the ordinary drawbacks and annoyances of mountain life.

Little Pocono Mountain rises to a height of one thousand eight hundred feet above tide-water. From the Inn the ground falls rapidly to the banks of the Swiftwater,



Exterior view of Inn

three hundred feet below, on which is built Lake Minnow, an artificial lake—one of the features of Pocono Manor.

During its earlier years Pocono Manor was regarded as a summer resort only; but the charms of the region in spring, fall and winter, and its remarkable healthfulness, resulted in a constantly increasing demand for accommodation before the Inn was opened in the spring and after it was closed in the fall. Even in midwinter some guests who were enthusiastic over the delights of Pocono would make up parties for a visit to the Manor. This demand has led to the building of Pocono Manor Cottages, planned especially for use in cold weather; and Pocono Manor is now and henceforth will be open all the year round.

CLIMATE.—The atmosphere of the Pocono region is remarkable for its refreshing coolness and dryness. The records show that the temperature of this locality averages some ten degrees lower than in the city of Philadelphia.

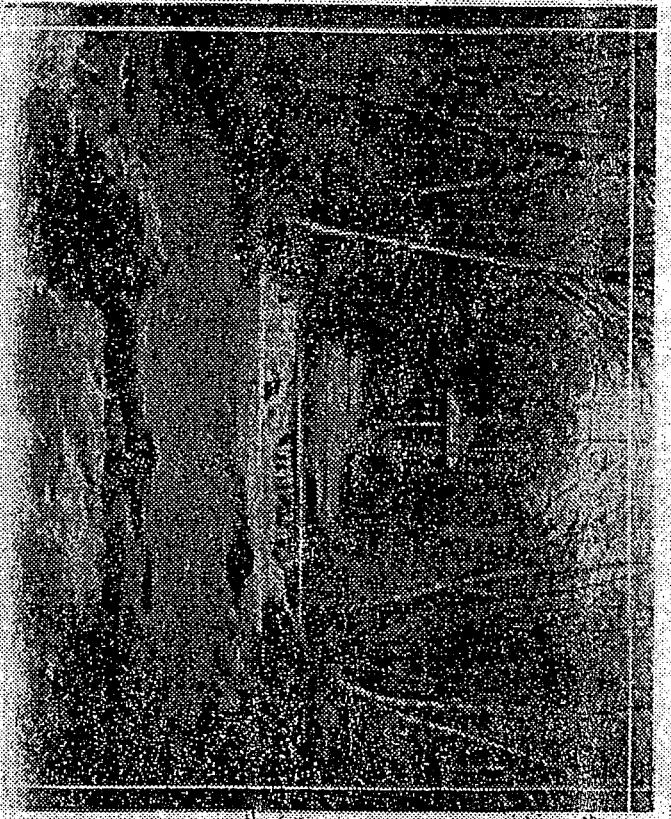


Children's Playground

VIEWS—From the east windows and porch of the Inn there are magnificent views of the beautiful Paradise Valley to the Delaware Water Gap, and on clear days the Shawangunk Mountains, and even the southern peaks of the Catskills, can be dimly seen to the northeast.

HEALTH—The record and reputation of the Pocono Mountains as a health resort are very remarkable. The loose, porous soil and the high altitude together give the air a peculiar dryness and purity, and the breath of the pines and hemlocks add a soft, pungent fragrance that is indescribably refreshing. Its wonderful tonic effect is not transient, but permanently strengthening and health-giving.

HAY-FEVER—One of the great advantages of Pocono is the beneficial effect of the air on persons subject to hay-fever and asthma. Many sufferers from hay-fever find themselves able to walk, ride and exercise with little or no trouble, the peculiar quality of the air apparently having a specific favorable effect on the lungs and air-passages.



Along the Swimming Pool

As the Inn is not run as a sanitarium, persons suffering from tuberculosis are requested not to apply.

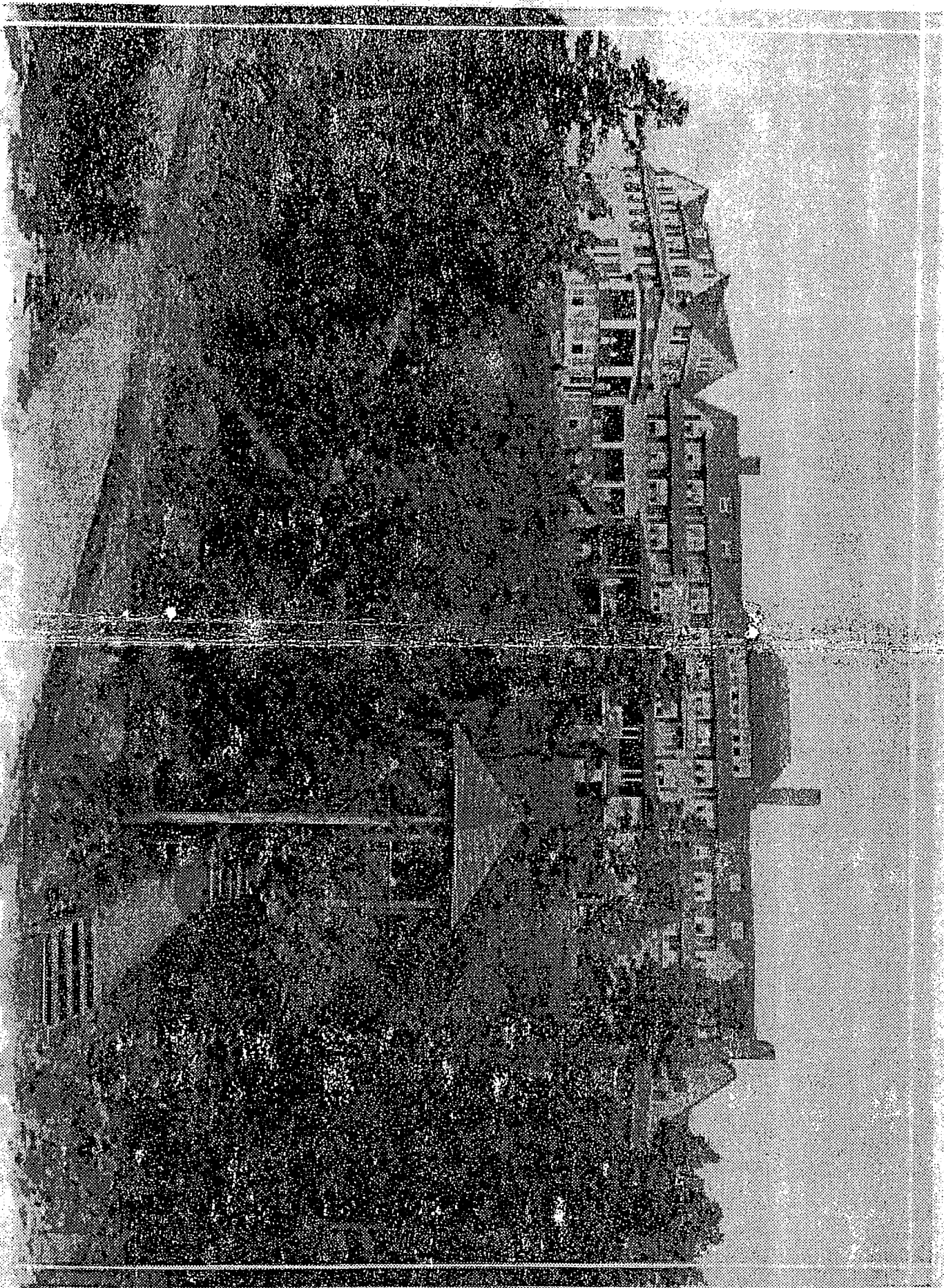
There is a resident physician in the hotel.
CHILDREN—Infants and little children thrive wonderfully in Pocono air, some having gained health and strength here in a short time.

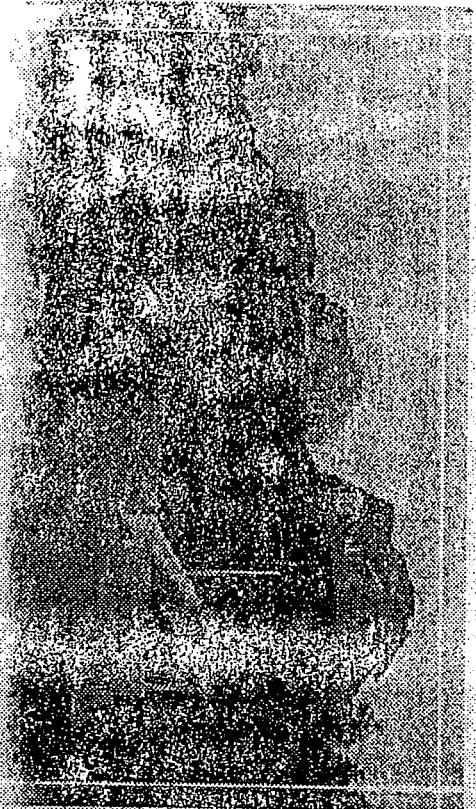
WATER SUPPLY—The water is taken from the Pocono Manor Springs, near Lake Minnowta, and pumped up to the large reservoir above the Inn. Its crystal clearness and remarkable purity have made it widely known.

Doctor Henry Lehmann, of Philadelphia, Pa., having examined the water supply at Pocono Manor, reports as follows:

Total Solids	15 parts in one million
Calcium	1 part in one million
Magnesium as Sulphate	1 part in one million
Iron as Sulphate	Trace only
Fluorine as Fluoride	Trace only

and remarks: "The above figures show that the spring water is of exceptionally high purity. It is especially adapted to liberal use as a drinking water."





Pocono Cottages
All have Comprehensive Views

CAPACITY—Pocono Manor Inn accommodates two hundred guests. In plan and equipment it is new and thoroughly modern. It has steam heat, electric light, passenger elevator, hot and cold water, and thirty private and public bathrooms. The management is in experienced and capable hands, and the table is unusually excellent.

Pocono Manor Cottage stands about two hundred yards east of the Inn, on the sheltered slope leading down to Lake Minnauin. It commands a fine view of the Swiftwater and Paradise Valleys. It is heated throughout, and has complete kitchen and dining-room arrangements, making it suitable for independent use when the Inn is closed.

ROADS AND AUTOMOBILES—Of the forty miles lying between Pocono Inn and Wilkes-Barre, the State Highway Department has recently converted the eastern half into a beautiful parkway. As this passes through Pocono Summit, Naomi Pines, Pocono Pines Assembly, Pocono Lake, Scudderaville and Bear Creek, it offers rare opportunities for automobile driving and riding. The trip from Philadelphia to Pocono Manor by automobile is



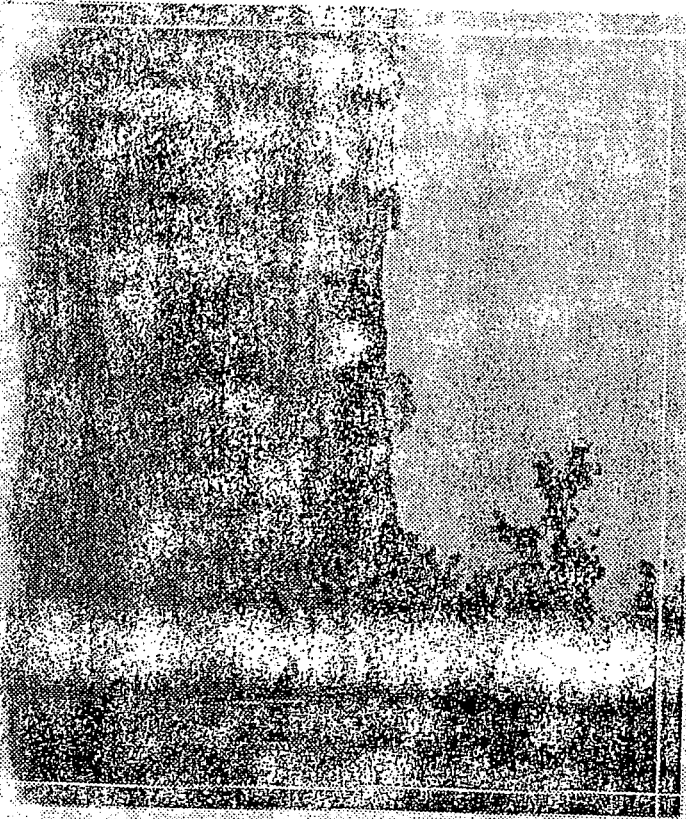
Social Hall—Manor Cottage

one of the most delightful in this part of the country, and is becoming yearly more popular. One of the most charming routes is that by Bethlehem and through the famous Wind Gap, renowned for its beauty of scenery. The route by way of the Delaware Water Gap is also a favorite.

Ample accommodations for automobiles, carriages and horses are provided at the Inn garage and stables at reasonable rates.

AMUSEMENTS—Lake Minnauin and the Swiftwater are well stocked with brook trout, and the fishing in the lake and the pools of the stream above is reserved for guests and cottagers. The other streams of the Pocono region are also famous for trout fishing.

A well-appointed nine-hole golf course, laid out by H. H. Barber, of Garden City, L. I., is maintained on the Manor property. The course, among the highest in the eastern portion of the United States, embodies a pleasing variety through its conformity to the roll mountain sides,

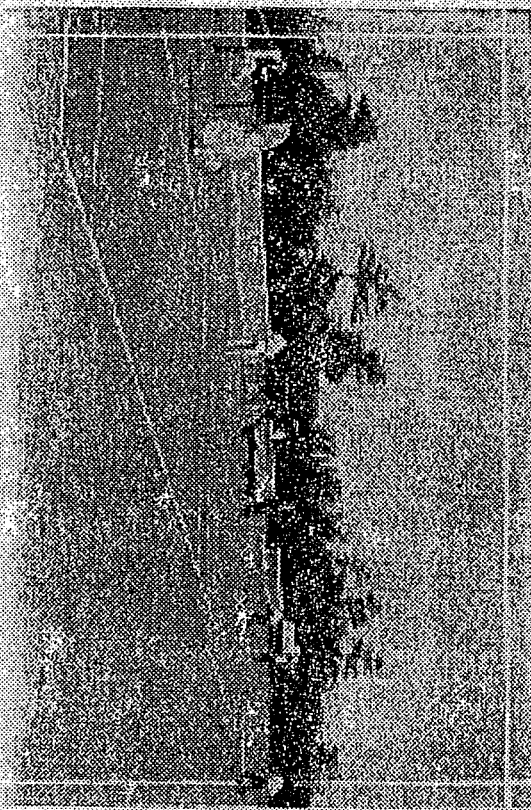


Golf Course - Clubhouse in the distance

at the same time commanding extended views over the adjoining hill ranges and valleys.

An attractive clubhouse has been erected at a point overlooking the first and ninth holes, from the broad verandas of which the game can be enjoyed by those who do not enter the sport.

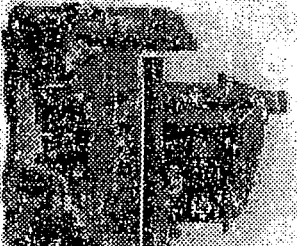
A number of good saddle-horses are provided for those who enjoy riding—in fact, this and lung tramp are the way in which to enjoy the Pesonoy, as many attractive points are inaccessible for the automobile or carriage. A half day's tramp to the observatory on Spruce Mountain will well repay those who do

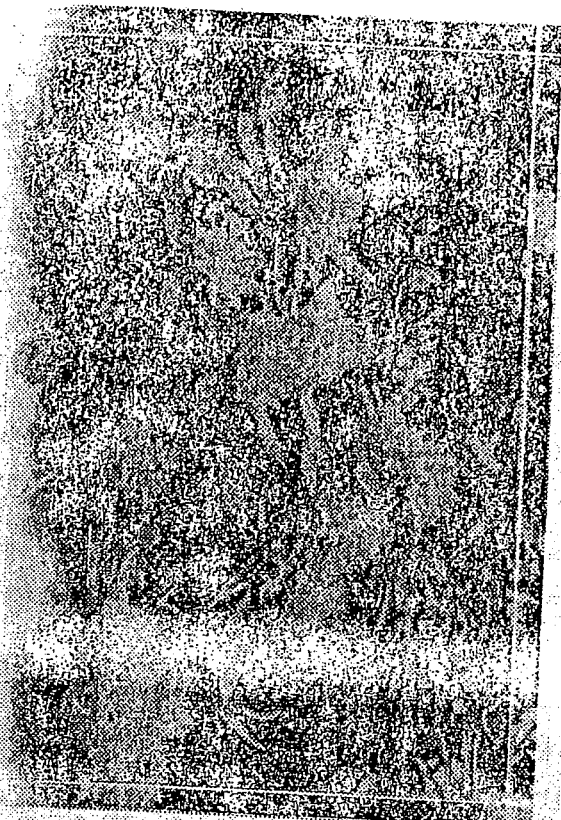


Lake Inn's Corner

not care for a longer tramp, while for the more venturesome there is a nine mile hike to Pecosso Knob, the highest point in Eastern Pennsylvania—two thousand two hundred and fifty feet, where the moonlight or early dawn can be enjoyed as nowhere else in this part of the country. Here the owner has recently built a stone bungalow, and has courteously offered it for the use of the Manor guests; accommodations being provided for all night parties.

A number of rate boats are for hire on the lake. A Water Carnival and other special entertainments given on the lake have been much enjoyed and appreciated. Horses and carriages for driving may be had at the Inn stables. A separate building has been erected for a bowling alley, where this and other similar games of skill afford much enjoyment, especially in rainy weather. There are excellent tennis-courts and a croquet ground. A dark-room is provided for photographers.





There are separate play-rooms for children, with many special resources for their amusement.

Rhododendron bloom is probably unsurpassed in grandeur by any other native flower in the eastern states. As the buds are formed the previous autumn, there promises to be a display of unusual beauty this season, beginning about June twenty-fifth and lasting until the middle of July. To witness this alone is well worth a visit to the Manor.

MEETINGS AND LECTURES.—One of the valuable features of the Inn is a large assembly-room, in which a Friends' meeting for worship is held on first-day mornings at half-past ten, to which all are invited. There are also other places of worship near, and those wishing to attend can procure carriages for that purpose. Otherwise the library is closed on first-days. Frequent lectures and entertainments are also given in the assembly-room.

LIBRARY.—An exceptionally well selected library of two thousand volumes is at the disposal of the guests.

Pocono Manor Inn opens about the middle of Sixth month (June), and remains open until near the middle of Tenth month (October). Many rooms have already been

engaged by regular guests, who have learned by previous experience the advisability of securing rooms at the earliest possible date.

A number of cottages are for rent, and table board may be had at the Inn. Camping parties may hire tents and fixtures.

For further information and rates address Pocono Manor Association, Pocono Manor, Monroe County, Pa. If you write before Sixth month 10th, address Pocono Manor Association, 918 Stephen Girard Building, Philadelphia, Pa.

For accommodations at the Manor Cottage during the autumn, winter and spring, address L. M. Dengler, Pocono Manor, Monroe Co., Pa.

Fall of the year.

APPROACHES TO POCONO MANOR

To reach Pocono Manor from Philadelphia, take the Pennsylvania Railroad from Broad Street Station to Pocono Summit.

From New York City, take Delaware, Lackawanna and Western Railroad from foot of Barclay or Christopher Streets to Pocono Summit. Excursion rate tickets to Pocono Summit can be procured throughout the year. Those issued after Sixth month 1st are good for the season.

Baggage should be plainly tagged to "Pocono Manor Inn, Pocono Summit Station, Delaware, Lackawanna and Western Railroad, Monroe County, Pa."

Guests should advise the manager in advance of the time of their expected arrival to insure being met at the station by the Inn coaches. The summer schedule on the Pennsylvania Railroad takes effect in Sixth month. The time of travel from Philadelphia or New York is about four hours. There are three or four express trains each way daily.

Pocono Manor is the post-office. Mail is received and sent out three times a day. The Inn also has local and long-distance telephone connections, and telegrams are transmitted by telephone to and from Pocono Summit, Delaware, Lackawanna and Western Railroad.

The guide staff at The Rod and Gun Club has the ability to show you more than the Poconos. Our guides currently guide Central, PA and the Lake Ontario Region of New York.

Central, PA

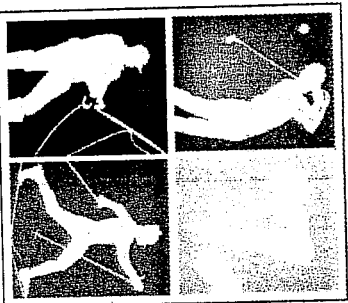


Fly Fish for wild brown and rainbow trout on Spring Creek, Fishing Creek and Penns Creek. These fertile streams provide excellent fishing for healthy wild fish with many possibilities for large fish. Fish your choice of streams for two days and spend the night in a local bed and breakfast.

Lake Ontario Tributaries



Walk / Wade or Drift boat fishing on the Salmon River and Southern Lake Ontario Tributaries for large brown trout and steelhead. Learn traditional fly fishing methods for catching 8-15 lb lake run trout on these scenic waters. Lodging available for 2 day trips.



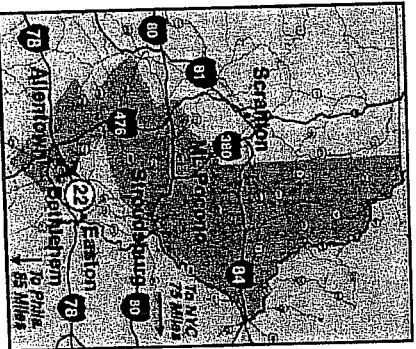
THE INN AT POCONO MANOR

White Fishing or Shooting at The Rod and Gun Club enjoy the benefits of staying at The Inn at Pocono Manor. For package rates and room availability contact the Inn at 570-839-7111 or www.theinnatpoconomanor.com

Special Bed and Breakfast Rates for Anglers

Single Rate \$129.00 mid week \$149.00 weekend

Double Occupancy Rate \$139.00 mid week
\$179.00 weekend



The Rod and Gun Club
at Pocono Manor



Orvis Endorsed Fly Fishing
Lodge and Guide Service

570-839-1688

www.therodandgunclub.com

P.O. Box 1 Route 940 & 314

Pocono Manor, PA 19349



Swiftwater Creek

Fly fish over 2.5 miles of secluded, private water at The Rod & Gun Club at Pocono Manor. The club's crew of experienced Orvis endorsed guides and instructors are eager to share their tricks and techniques for outwitting our wily, wild brookies. Surrounded by 3500 acres of heavily wooded estate land, this crystal clear stream provides technical small stream fishing in a secluded setting.

Whether you are just beginning your fly fishing adventures or are a well-traveled, experienced angler, Pocono Manor offers the perfect setting for a memorable day on the water.

Swiftwater Walk/Wade Trips	
4 hours	\$150.00
8 hours	\$265.00
1 or 2 anglers	



Pocono Streams

The Pocono Mountain Region of Pennsylvania is well known for its many scenic trout streams. From the historic Brodhead Creek water shed to the big waters of the Lehigh River, The Rod and Gun Club guides know them all. These are the rivers on which we work and play on a regular basis. With our local knowledge and many years of experience you are bound to have unique experience on our favorite waters. Year round fishing is available, but the best fishing and hatches occur from mid April to the end of June.

Enjoy walk and wade opportunities on small creeks or large freestone rivers throughout the Poconos. There are over a dozen streams, creeks and rivers within a 45 minute drive from Pocono Manor with good populations of wild and stocked trout.

Pocono Walk/Wade Trips		
4 hours	\$150.00	\$50.00 for each additional angler
8 hours	\$250.00	\$100.00 for each additional angler Lunch is included

Lehigh River

The Lehigh River is one of the up and coming rivers on the east coast. This once polluted river is now filled with good sized stocked and holdover trout. From the Francis Walter Dann near White Haven, down stream to the Delaware River the Lehigh has proven to be a great fishery with a diverse population of insects and forage fish. The trout and small mouth bass in this river grow fast and feed well and provide a great fight in the deep pools and fast runs.

The Lehigh is one of the few rivers where a drift boat can be used and it is sometimes necessary to properly fish the river. Our guides have fished the Lehigh for many years and know its waters well. Drift trips are available from April to October and are available for 1 or 2 anglers. Walk/Wade fishing is available for confident waders.

Drift Boat Trips	
6 hours	\$250.00
8 hours	\$350.00
Boats hold up to 2 anglers	

