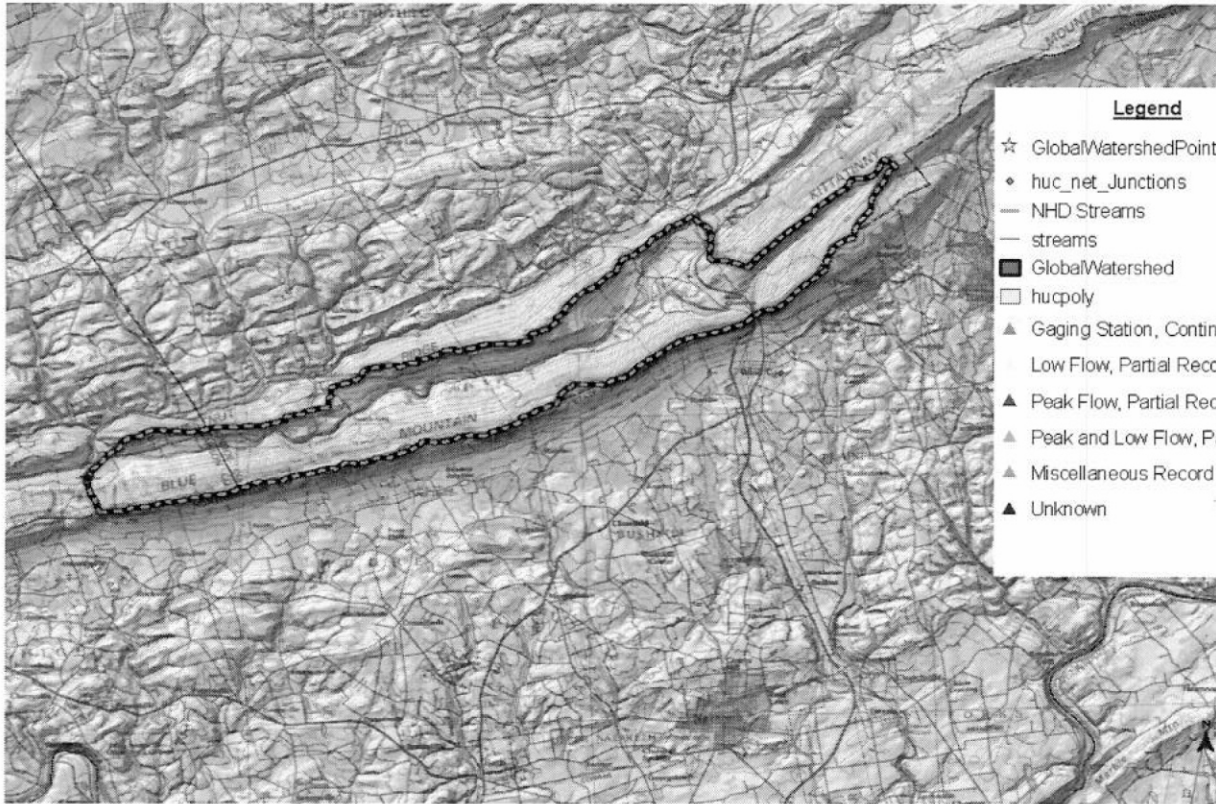


**Pennsylvania StreamStats****Basin Characteristics Report****Date: Mon Aug 2 2010 14:11:35 Mountain Daylight Time****NAD27 Latitude: 40.8183 (40 49 06)****NAD27 Longitude: -75.5276 (-75 31 40)****NAD83 Latitude: 40.8183 (40 49 06)****NAD83 Longitude: -75.5273 (-75 31 38)**

Parameter	Value
Stream density (miles/square mile)	1.06
Depth to rock in feet	4.932
Percent of area covered by forest	87.6693
Total stream length in miles	24.1
Area in square miles	22.807
Unadjusted basin slope, in degrees	10.0364
Mean annual precipitation in inches	46.308
Percent of area covered by lakes, ponds, reservoirs and wetlands	1.9250
Percent of area covered by glacial activity	1.5815
Mean Basin Elevation in feet	934
Percent of area covered by urban	0.8010
Percent of area covered by carbonate bedrock	13.6280
Adjusted basin slope, in degrees	9.8



StreamStats Print Page



- Legend**
- ☆ GlobalWatershedPoint
 - ◆ huc_net_Junctions
 - NHD Streams
 - streams
 - GlobalWatershed
 - hucpoly
 - ▲ Gaging Station, Continuous Record
 - Low Flow, Partial Record
 - ▲ Peak Flow, Partial Record
 - ▲ Peak and Low Flow, Partial Record
 - ▲ Miscellaneous Record
 - ▲ Unknown



8/2/2010 2:39:46 PM