



**pennsylvania**  
DEPARTMENT OF ENVIRONMENTAL  
PROTECTION



Bureau of Clean Water

# Draft 2024 Integrated Report

Water Resources Advisory Committee

September 21, 2023



# Timeline

- **Integrated Report (IR) Public Participation**
  - Begins September 23, 2023
  - 45-day comment period
  - Ends November 7, 2023
- **IR Finalization**
  - Comment/response document will be created after November 7, 2023
  - Final 2024 IR will be submitted to EPA for approval by February 2024
  - Meets federal mandate of final submission by April 1, 2024



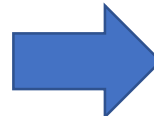
# IR Changes and Enhancements for 2024

- Esri StoryMaps now support tables, so tables were added to the StoryMap in place of the scrolling indicators

◀ 1 of 11 ▶ 

## Atlas of Surface Waters in Pennsylvania

Total Miles of Rivers and Streams  
**85,568**



2024 Atlas of Pennsylvania's Surface Waters 

State Population	12,972,008
State Surface Area (square miles)	45,333
Number of Major Surface Water Basins	6
Total Miles of Rivers and Streams	85,568
Number of Publicly Owned Lakes	310
Acres of Publicly Owned Lakes	105,135
Square Miles of Delaware Estuary	17
Square Miles of Presque Isle Bay	6
Miles of Great Lakes Shore	63
Acres of Freshwater Wetlands	1,591,012
Acres of Tidal Wetlands	1,377

# IR Changes and Enhancements for 2024

- **Several new program descriptions have been added for 2024**
  - Conservation District Support
  - Coastal Resources Management
  - Interstate Basin Waters
  - PENNVEST
  - Environmental Cleanup





# IR Changes and Enhancements for 2024

- An Environmental Justice section has been added

## Environmental Justice

Environmental Justice (EJ) embodies the principles that communities and populations should not be disproportionately exposed to adverse environmental impacts. Historically, minority and low-income Pennsylvanians have been forced to bear a disproportionate share of adverse environmental impacts. It is DEP's duty to ensure that all Pennsylvanians, especially those that have been disenfranchised, are meaningfully involved in the decisions that affect their environment.


DEP's [Office of Environmental Justice](#) fulfills a critical role in this challenge – ensuring the fair treatment and meaningful involvement of all people with environmental policies, regulation, and laws; as well as with respect to the identification of environmental issues that affect the most vulnerable communities. Additionally, the DEP Secretary appoints 15 individuals to an [Environmental Justice Advisory Board](#), which reviews and makes recommendations to DEP management on existing and proposed regulations and policies that impact the environmental health of communities, in keeping with the mission of the Office of Environmental Justice. The public may also sign up for the [EJ Newsletter](#) to stay current with the work DEP is doing to meet this challenge.

- Pennsylvania is already dealing with the impacts of climate change. These impacts
- are expected to intensify and disproportionately harm vulnerable populations,

### Climate Action for Environmental Justice

### Communities in Pennsylvania: Share Your Views

Introduction Environmental Justice Surveys



Nearly four million Pennsylvania residents live in Environmental Justice communities across the commonwealth. These areas are characterized by:

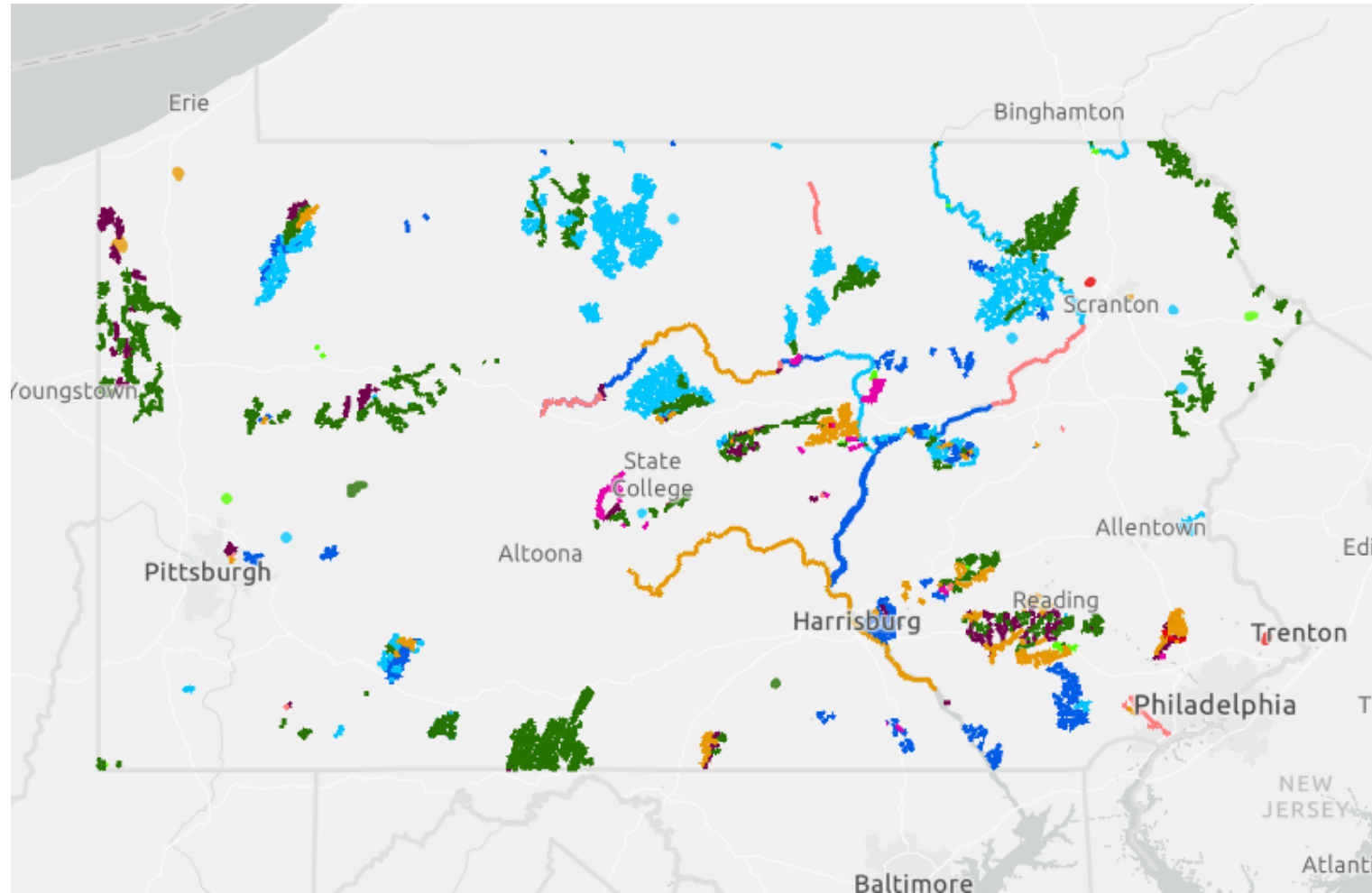
- **Urban, suburban, and rural environments**
- **Significant portion of the population live at or below poverty levels**
- **Significant portion of the population is nonwhite**

*State and national trends indicate that individuals in these areas are more vulnerable to the effects of climate change such as increasing heat and flooding in part because of systemic challenges and historic injustices which have also often led to these*

The Pennsylvania Department of Environmental Protection (DEP) is responsible for producing a Climate Action Plan to address the impacts of climate change. The most recent Climate Action Plan was

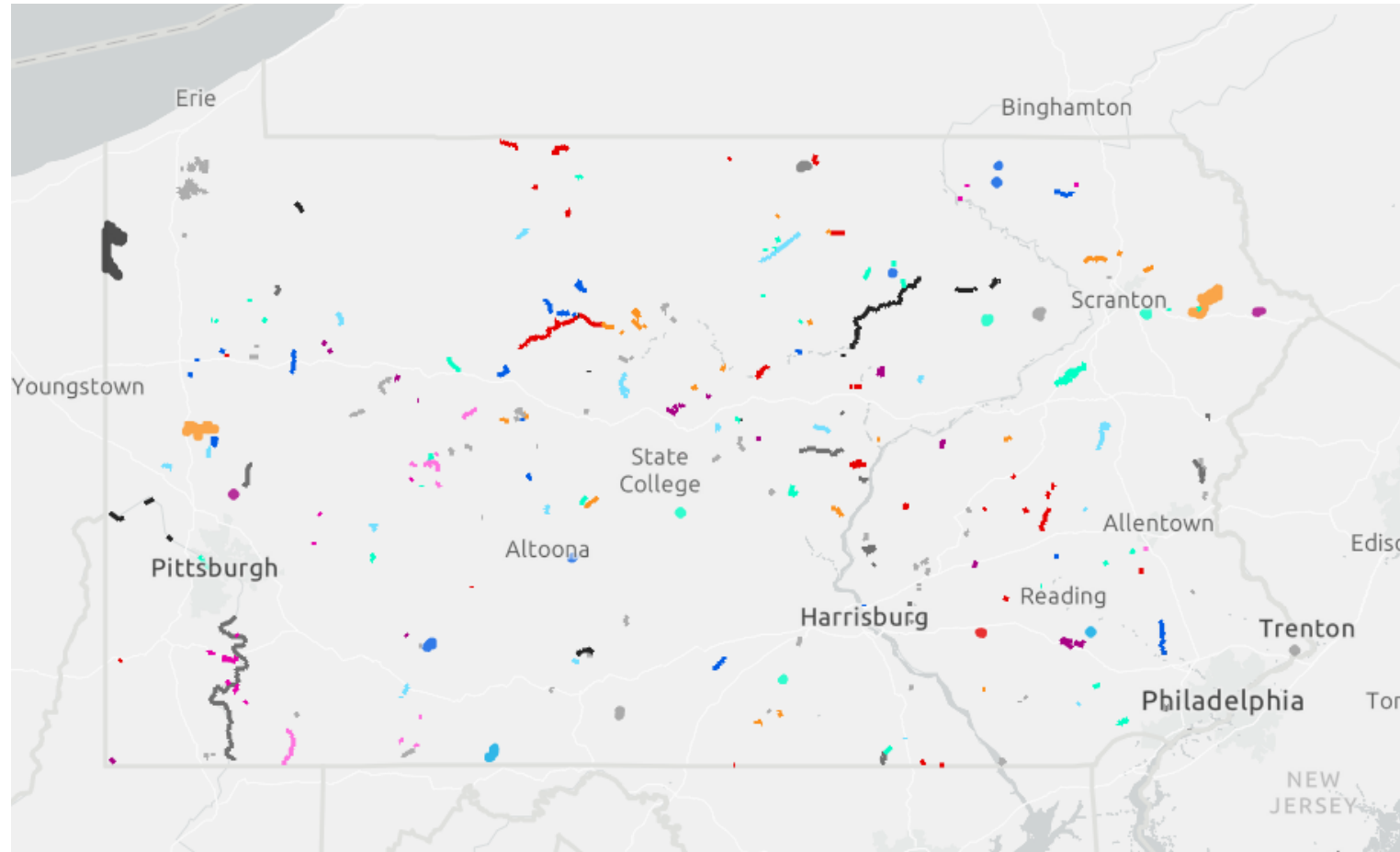
# Data Highlights

- Major portions of the West Branch Susquehanna River and Susquehanna River have been assessed/reassessed for Aquatic Life use in 2024
- Approximately 3,200 stream miles have been assessed for recreation. Many of these streams were not previously assessed for recreation



# Data Highlights

- Approximately 47 stream miles and 727 lake acres have been restored for at least one protected water use since 2022
- A total of 967 stream miles and 28,727 lake acres have been restored for at least one protected water use since 2004







**pennsylvania**  
DEPARTMENT OF ENVIRONMENTAL  
PROTECTION



Bureau of Clean Water

Questions?

Dustin Shull  
[dushull@pa.gov](mailto:dushull@pa.gov)