



**pennsylvania**

DEPARTMENT OF ENVIRONMENTAL PROTECTION



Bureau of Waste Management

# Overview of the Bureau of Waste Management

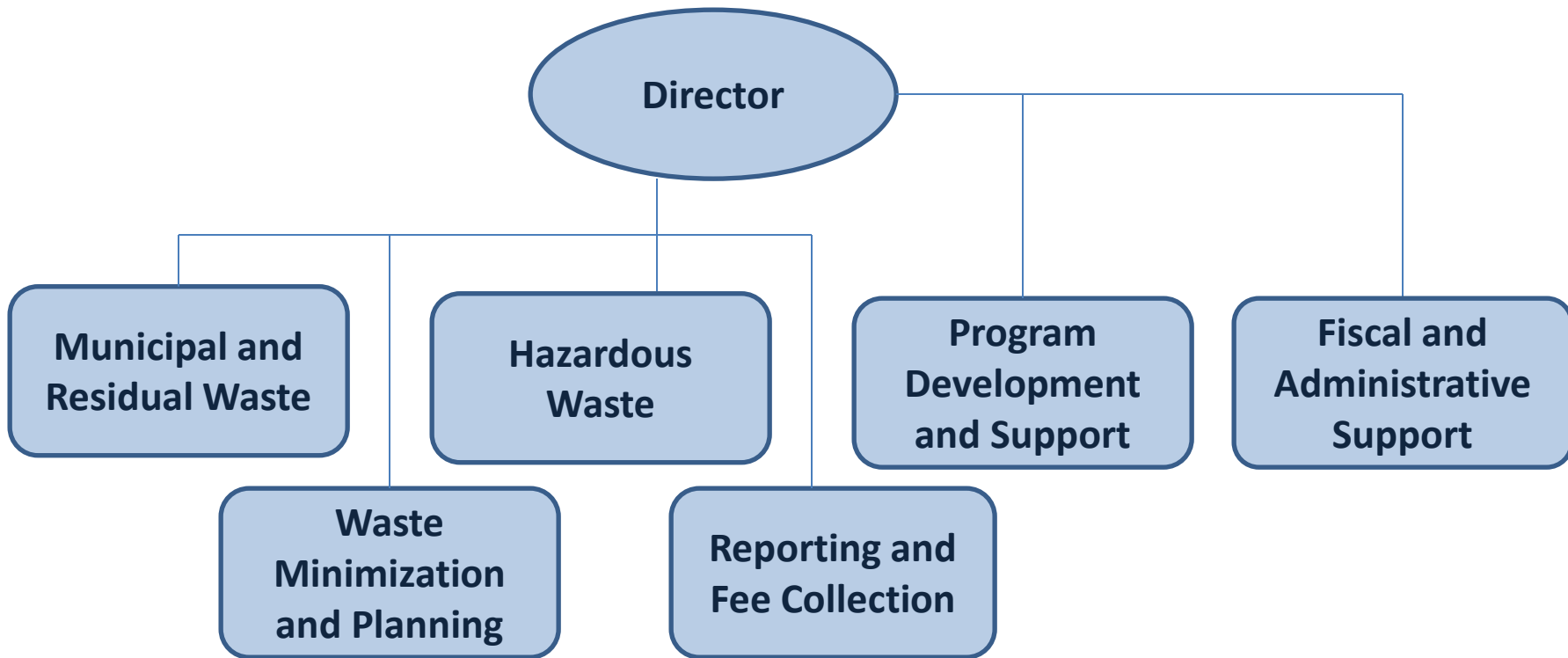
Solid Waste & Recycling Fund Advisory  
Committees

March 18, 2021

Tom Wolf, Governor

Patrick McDonnell, Secretary

# Organizational Chart



# Staffing

- **49 total positions, including:**
  - 8 vacancies
  - 1 contractor
- **Out of 41 positions currently filled:**
  - 5 eligible to retire now (12%)
  - 5 eligible to retire in 4 years or less (12%)
  - **24% of workforce eligible to retire in next 4 years**

# Waste Facilities



- Municipal Waste Landfills
- Construction and Demolition Waste Landfills
- Resource Recovery (Waste-to-Energy) Facilities

# Waste Facilities

- **Municipal Waste (MW)**
  - Landfills (LFs), including Construction/Demolition
  - Transfer Stations
  - Incinerators/Resource Recovery Facilities (RRFs)
  - Regulated Medical & Chemotherapeutic (RMCW)
- **Residual Waste (RW)**
  - LFs (captive and noncaptive)
  - Disposal Impoundments
  - Incinerators
  - Other processing/disposal

# Waste Facilities

- **Hazardous Waste (HW)**
  - Treatment/Storage/Disposal Facilities (TSDFs)
  - LFs (captive and noncaptive)
  - HW Transporters
  - Historic Facilities
- **Other**
  - MW Transporters
  - Waste Tire Facilities
  - Waste Tire Transporters

# Landfill Tipping Fees

- **Recycling Fee**

- \$2/ton on waste managed at MW landfills and resource recovery facilities
- Deposited into the Recycling Fund
- Sunset date extended indefinitely October 2017 by Act 40, which amended the Administrative Code

- **Environmental Stewardship Fee**

- \$0.25/ton on waste disposed at MW landfills
- Deposited into the Environmental Stewardship Fund

# Landfill Fees

- **Disposal Fee for Municipal Waste Landfills**
  - \$4/ton on waste disposed at MW landfills
  - Deposited into the Environmental Stewardship Fund
- **Host Municipality Benefit Fee**
  - \$1/ton on waste managed at MW landfills or other waste processing/disposal facilities
  - Negotiated with and paid to the host municipality



# Waste Disposal Trends (2013-2019)

- **Overall amount being disposed has increased 13.7%**
  - 21.2 M tons in 2013
  - 24.1 M tons in 2019
- **Waste disposed that was generated in PA has increased 9.7%**
  - 14.2 M tons in 2013
  - 15.6 M tons in 2019

# Waste Disposal Trends (2013-2019)

- **MW generated in PA has increased 13.5%**
  - 5.29 million tons in 2013
  - 6.00 million tons in 2019
- **RW generated and disposed in PA has increased 84.4%**
  - Primarily drill cuttings from unconventional gas well drilling
  - .622 million tons in 2013
  - 1.15 million tons in 2019

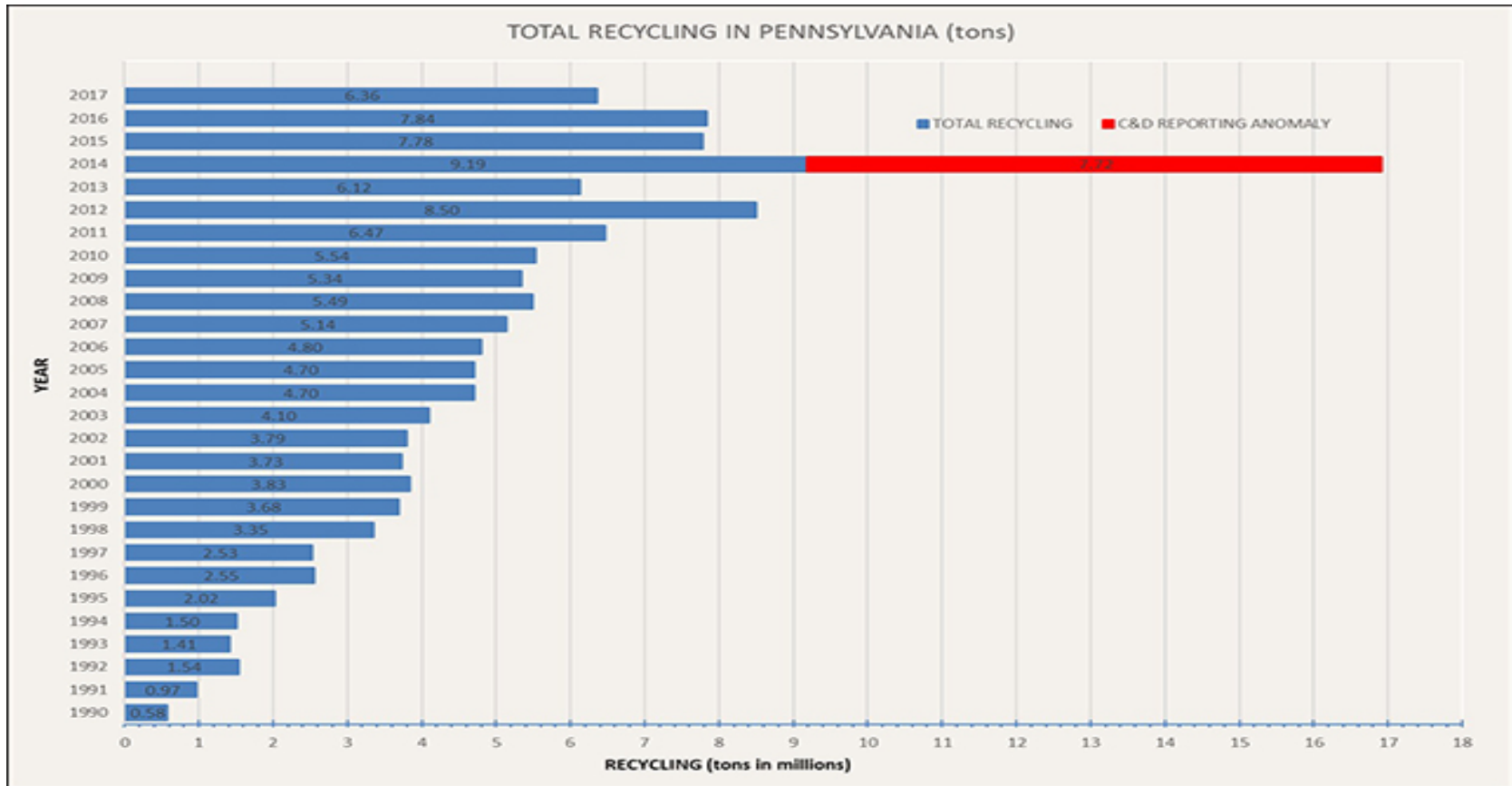
# Waste Disposal Trends (2013-2019)

- **Waste disposed that was generated outside PA has increased 22%**
  - 7.0 million tons in 2013
  - 8.5 million tons in 2019
- **Waste disposed at Resource Recovery Facilities (RRFs) has increased 10%**
  - 3.0 M tons in 2013
  - 3.3 M tons in 2019

# Waste Disposal Trends (2013-2019)

- **BWM will continue to monitor waste disposal and recycling trends**
  - Accurate measure of how programs are performing
  - Provide information to interested parties and the public

# Recycling Trends





**pennsylvania**  
DEPARTMENT OF ENVIRONMENTAL PROTECTION



Bureau of Waste Management

# Division of Municipal & Residual Waste

# Municipal & Residual Waste

- **Oversees the statewide permitting and regulation of municipal and residual waste disposal and waste processing facilities**
  - 43 landfills
  - 6 resource recovery facilities
  - 93 transfer facilities
- **Manages and implements DEP's TENORM disposal protocol**

# Municipal & Residual Waste

- **Manages and implements Pennsylvania's beneficial use program**
  - Develops new and maintains existing general permits for the processing and beneficial use of municipal and residual waste
  - Approximately 103 beneficial use permits
  - Approximately 481 beneficial use facilities



# Municipal & Residual Waste

- **Oversees the statewide Waste Tire Program**
  - Manages and facilitates the cleanup of priority tire piles
    - Since the program's inception, 20 tire piles have been remediated and DEP has successfully recycled or disposed of over 40 million waste tires.
    - After FY 2020-21, two sites remain on the priority waste tire pile list. Approximately 700,000 tires are estimated at these two remaining sites.

# Municipal & Residual Waste

- **Oversees the statewide Waste Tire Program**
  - Tire hauler authorizations
    - Issued approximately 600 waste tire transporter authorizations in 2020
    - Performs compliance checks on applicants and existing haulers
    - Provides compliance assistance to tire haulers and DEP regional offices
    - Liaison with other state tire programs

# Municipal & Residual Waste

- **Develops and interprets DEP waste regulations**
  - Liaison with Regional offices
  - Promotes statewide consistency
  - Updates technical guidance documents, policies, procedures, and fact sheets
- **Evaluates coproduct determinations, de-wasting requests & Form U waiver requests**

# Municipal & Residual Waste

- **Coordinates with other DEP programs:**
  - *Oil and Gas Program*: permitting and regulation of wastes generated by drilling operations.
  - *Clean Water Program*: permitting and regulation of industrial wastewater treatment/storage facilities and biosolids operations.
  - *Mining Program*: beneficial use of wastes in mine reclamation and permitted mine sites.

# Upcoming Priorities

- Revise General Permit No. WMGR096, which authorizes the use of regulated fill
- Evaluate proposed revisions to EPA's 2015 CCR Rule and obtain EPA approval for PA's program
- Evaluate disposal options for PFAS-containing waste streams
- Finalize revisions to DEP's Solid Waste Radiation Monitoring TGD
- Propose Rulemaking for Rural Transfer Facility Permit-By-Rule



**pennsylvania**  
DEPARTMENT OF ENVIRONMENTAL PROTECTION



Bureau of Waste Management

# Division of Waste Minimization & Planning

# Waste Minimization & Planning

- **Municipal Recycling**

- 472 local governments overall required to recycle under Act 101
- New census data will be finalized in late 2021 or early 2022
- 650 communities voluntarily recycle for a total of 1,122 municipalities who are currently recycling
- Nearly 11.5 million Pennsylvanians participate in some type of recycling
- These numbers are changing daily

# Act 101 Recycling Grants

- **Act 101 Grants**

- Section 901, County Planning Grants
- Section 902, Recycling Program Development and Implementation Grants
- Section 903, County Recycling Coordinator Grants
- Section 904, Recycling Performance Grants
- Section 1102, Host Inspectors Grants
- Section 1110, Independent Evaluation of Permit Grants



# Act 101 Recycling Grants

- **Section 902 Grants**

- \$26.8 Offering in CY 2020 to support local government Municipal Recycling Implementation Grants
- Contracts to be emailed in May
- New solicitation in May 2021
- Reimbursement, competitive grant program
- Primarily funds equipment-related costs
- Reduction in available grant funds due to decrease in fees collected

# Act 101 Recycling Grants

- **Section 904 Grants**

- Recycling Performance Grants available to all local governments with recycling programs
- Grant rewards communities based on materials recycled each year
- \$21.5 million budgeted for FY 21/22
- Applications due December 29, 2021, for materials collected in calendar year 2020

# Recycling Fund

- **Recycling Fund Budget**

- Projected Fund income approximately \$41 million
- Increase Public Education efforts
- Prioritize those communities that collect materials in manner that will focus on source separated commingled or dual stream and a demonstrated market for those materials
- High priority for the collection of organic materials

# Covered Device Recycling Act (CDRA)

- **“Producer Responsibility Model:”**
  - Requires manufacturers of covered electronic devices to recycle an amount of electronic waste material proportionate to the total weight of new devices sold annually in Pennsylvania
- **Manufacturers offering sale of a covered electronic device in Pennsylvania must:**
  - Complete and submit an annual CDRA Registration Form
  - Remit a \$5,000 Registration Fee

# Covered Device Recycling Act (CDRA)

- **Annual Responsibilities of the Manufacturer**
  - By August 31 prior to the program year, submit:
    - Completed Registration Form, citing the total weight of annual sales in Pennsylvania from two years prior
    - Registration Fee of \$5,000
    - Recycling Plan, outlining the collection points, recyclers and end processors contracted to collect, transport and recycle material on the manufacturer's behalf for the associated program year
  - By January 31 following the close of program year, submit:
    - An Annual Report, confirming the manufacturer's adherence to the CDRA Recycling Plan as approved

# Covered Device Recycling Act (CDRA)

## Total Registered Manufacturers (by Program Year)

2014: **75** Manufacturers

2015: **61** Manufacturers

2016: **55** Manufacturers

2017: **61** Manufacturers

2018: **63** Manufacturers

2019: **63** Manufacturers

# Covered Device Recycling Act (CDRA)

## Obligation Percentage & Total Pounds Recycled (by Program Year)

2015: **100%** of 2013 Sales, **62.4M** Pounds Recycled

2016: **100%** of 2014 Sales, **62.7M** Pounds Recycled

2017: **100%** of 2015 Sales, **58.1M** Pounds Recycled

2018: **100%** of 2016 Sales, **56.5M** Pounds Recycled

2019: **100%** of 2017 Sales, **56.4M** Pounds Recycled

# Waste Composition Study

- **Preliminary results on the content of the waste stream from a small number of facilities**
  - Organics (food, yard waste, wood): 40%
  - Paper (cardboard, newsprint, office paper, magazines, etc.): ~25%
  - Plastics: ~21%
  - Inorganic waste (e-waste, drywall, concrete, HHW, etc.): ~7.7%
  - Metals: 3.9%
  - Glass: 2.7%





**pennsylvania**  
DEPARTMENT OF ENVIRONMENTAL PROTECTION



Bureau of Waste Management

# Division of Hazardous Waste Management

# Hazardous Waste Management

- **Oversees implementation of PA's Hazardous Waste Program**
  - Facility permit program conducted by Regional Offices
  - Inspections and enforcement activities conducted by Regional Offices
  - PA's Hazardous Waste Program is authorized by U.S. EPA to be implemented in lieu of the federal program

# Hazardous Waste Management

- **Provides regulatory assistance and interpretation to regulated entities, regional office staff, and the public**
  - Hazardous waste determination issues
  - Hazardous waste recycling exclusions & exemptions
  - Interfaces with the federal hazardous waste program and PA's residual waste program
  - Assures statewide consistency to the maximum extent possible

# Hazardous Waste Management

- **Ensures that the obligations and commitments of PA's U.S. EPA hazardous waste agreement are fulfilled**
  - Permit obligations for hazardous waste storage, treatment & disposal facilities (issuances, re-issuances, modifications)
  - Compliance assistance, monitoring & enforcement
  - Waste minimization and sustainability efforts
  - Corrective action work-sharing efforts in conjunction with EPA Region 3

# Hazardous Waste Management

- **Supported by the Hazardous Sites Cleanup Fund**
- **Further supported through a Federal Resource Conservation and Recovery Act (RCRA) Grant from EPA**
  - Runs on 3-year cycle (current FFY20-22)
  - 75/25 match (EPA/DEP)
  - Current funding
    - EPA: \$4,740,000/year
    - DEP: \$1,580,000/year

# Hazardous Waste Management

- **Under the RCRA Grant, DEP develops/implements annual Work Plan**
  - Administrative & Program Planning
  - Authorization
  - Corrective Action
  - Data Management
  - Enforcement
  - Permitting
  - Sustainable Materials Management

# Permitting & Technical Support

- Oversight of the Pennsylvania Hazardous Waste Permit Program (TSD facilities)
- New commercial hazardous waste permits (Siting Team)
- Solid waste variances and petitions to delist hazardous waste
- Corrective Action Site workshare with EPA

# Permitting & Technical Support

- **Regulatory compliance assistance**
  - Hazardous waste determination issues
  - Hazardous waste exclusions and exemptions
  - Permit requirements
  - Regulatory interpretation
- **Hazardous waste minimization and sustainable materials management**
  - Mercury Thermostat Program
  - School Chemical Cleanout Campaign (SC3)



# Compliance & Information Mgmt

- Maintenance of hazardous waste compliance & enforcement data in eFACTS and translation to RCRAInfo
- Compliance assistance for Regional staff and the regulated community
- Management of Notifications of RCRA Subtitle C Activities (Site Identification Form/8700-12)
- Hazardous waste and regulated medical/chemotherapeutic waste transporter licensing

# Generator Improvements Rule (cont.)

- **DEP proposed a Final-Omitted Rulemaking to incorporate the federal changes into Pennsylvania's hazardous waste regulations**
  - SWAC: Sept 12, 2019
  - EQB: January 21, 2020
  - IRRC: June 18, 2020
  - *Pa. Bulletin* publication: July 18, 2020

# Ongoing & Upcoming Priorities

- **Delisting petitions**
- **Hazardous Waste Facility Siting Team**
- **Program Authorization**



**pennsylvania**

DEPARTMENT OF ENVIRONMENTAL PROTECTION



Bureau of Waste Management

# Division of Reporting & Fee Collection

# Reporting & Fee Collection

- **Processes Quarterly Operations and Fee Reports**
  - Hazardous Waste Transportation Reports
    - 210/quarter
    - Approximately 85% submitted electronically
    - \$1,255,400 – HSCA Fund (2019)
    - Cross reference with Hazardous Waste Manifest Information

# Reporting & Fee Collection

- **Processes Quarterly Operations and Fee Reports**
  - Hazardous Waste Treatment, Storage and Disposal Reports
    - 15/quarter
    - Approximately 85% submitted electronically
    - \$284,400 (2019) – HSCA Fund

# Reporting & Fee Collection

- **Processes Quarterly Operations and Fee Reports**
  - Municipal Waste Landfill and Resource Recovery Reports
    - 48/quarter
    - 48 submitted electronically
    - \$42 million/yr. Recycling Fund
    - \$78 million/yr. Environmental Stewardship Fund
    - 24.1 million tons in 2019

# Reporting & Fee Collection

- **Processes Residual Waste Biennial Reports**
  - Over 2,500 generator reports
  - Approximately 40% submitted electronically
  - 15,500,00 tons/yr. generated (2018 – non-wastewater)



# Reporting & Fee Collection

- **Processes Hazardous Waste Biennial Reports**
  - Over 1,050 reports (2019)
  - 256,845 tons/yr. generated
  - 221,342 tons/yr. shipped
  - 311,775 tons/yr. received
    - 68,114 In-state
    - 243,661 Out-of-State

# Waste Transportation Safety Program



- Established by the [Waste Transportation Safety Act \(Act 90\)](#) to protect public health, safety & the environment.
- Ensures the responsible and safe transportation of municipal or residual waste to processing and disposal facilities by requiring written authorization from the Department.

# Waste Transportation Safety Program

- **Waste Transportation Safety Act (Act 90)**
  - Prohibits waste processing or disposal facilities from accepting municipal or residual waste from a transportation vehicle engaged in commerce without a valid authorization sticker issued by DEP.
  - Provides DEP the authority to deny or revoke written authorization where the agency finds that the transporter has failed or continues to fail to comply with applicable laws and regulations.

# Waste Transportation Safety Program

- **Authorization/Sticker Requirements**
  - Trucks and truck-tractors >17,000 lbs. and trailers >10,000 lbs. Gross Vehicle Weight (GVW) as indicated on the vehicle registration
  - Exemptions
    - Clean Fill, Residential Septage, Tires, etc.
    - One-time (administered by Central Office)
    - [Transportation Exemptions](#)

# Waste Transportation Safety Program

- **Current Fees**

- Truck (TK): \$100
- Tractor Truck (TT): \$50
- Waste Trailer (WT): \$50



# Waste Transportation Safety Program

- **Authorization Process**

- Two ways to apply

- Paper application by mail
- Online Application through DEP GreenPort system

- New Haulers

- If business, will need to provide IRS Form 147C or SS-4
- Apply for PIN # for access to DEP GreenPort system
- Application process time approximately 2-3 weeks

# Waste Transportation Safety Program

- **Authorization Process (cont.)**
  - Existing Haulers
    - Apply 120 days prior to expiration
    - Annual renewal notices may be sent 90 to 120-days prior to expiration
    - Compliance history reviewed annually
    - If application complete, process time ~5 days
    - Add/delete vehicles from authorization
    - Order replacement stickers (Fees are the same)

# Waste Transportation Safety Program

- **Authorization Process (cont.)**

- 2 stickers & 1 cab card issued for each vehicle VIN





# Waste Transportation Safety Program

- **Program Statistics**

- 4,982 Active waste transporters (2021)
- \$3.5 million in revenue (2020)
- 77% of renewals, 87% of addendums, and 16% of new applications are submitted electronically (2019)
- Average processing time < 8 days



**pennsylvania**  
DEPARTMENT OF ENVIRONMENTAL PROTECTION



Bureau of Waste Management

# Program Development & Support Section

# Program Development & Support

- **Assists the Bureau**
  - Legislation tracking
  - RTK Liaison
  - IT Liaison
    - Application development
    - Web postings
    - Website development (internal/external)
    - Electronic file management system (OnBase)
  - Solicit/compile information for Executive Staff

# Program Development & Support

- **Assists the Divisions with Special Projects**
  - Regulatory revisions
  - Updates to documents
    - Technical Guidance
    - Policies
    - Fact Sheets
  - Promote program consistency

# Program Development & Support

- **Works with Keep Pennsylvania Beautiful (KPB)**
  - Grant management
  - Pick Up Pennsylvania events (Spring and Fall)
  - Adoption Programs
  - Littering/Illegal Dumping
- **Anti-Litter Initiatives**
  - DEP/PennDOT/KPB partnership
  - Litter Study (2019)
  - Statewide Litter Action Plan development

# Program Development & Support

- **Host Municipal Inspector Program**
  - Provide certification training
  - Oversee grant program
- **SWAC/RFAC Liaison**
  - Coordinate and organize meetings
  - Develop meeting agendas and materials
  - Approve travel-related expenses
  - Administration of Bylaws

# Priority Projects

- **Lean Management**
  - Municipal Waste LF Annual Operations Reporting
  - Municipal Waste RRF Annual Operations Reporting
- **eInspection for Waste Management**
  - New mobile inspection platform
  - iOS application
  - Application development/testing
  - Anticipate launch Summer 2021

# Contact Information

- **Director's Office:** (717) 783-2388
  - Ali Tarquino Morris: [altarquino@pa.gov](mailto:altarquino@pa.gov)
- **Municipal & Residual Waste:** (717) 787-7381
  - Ali Tarquino Morris: [altarquino@pa.gov](mailto:altarquino@pa.gov)
- **Waste Minimization & Planning:** (717) 787-7382
  - Larry Holley: [lholley@pa.gov](mailto:lholley@pa.gov)
- **Hazardous Waste:** (717) 787-6239
  - Tom Mellott: [mtmellot@pa.gov](mailto:mtmellot@pa.gov)
- **Reporting & Fee Collection:** (717) 783-5914
  - Rick Miklos: [rmiklos@pa.gov](mailto:rmiklos@pa.gov)
- **Program Development & Support:** (717) 783-2388
  - Laura Henry: [lahenry@pa.gov](mailto:lahenry@pa.gov)





**pennsylvania**  
DEPARTMENT OF ENVIRONMENTAL PROTECTION



Bureau of Waste Management

# Questions?

## Bureau of Waste Management

### (717) 787-9870