

# **2018 Integrated Water Quality Monitoring and Assessment Report**

Agriculture Advisory Board

December 21, 2017

Gary Walters

Chief, Assessment Section

Water Quality Division

Tom Wolf, Governor

Patrick McDonnell, Secretary

# New Format

- For 2018 the Integrated Report narrative will be in a new format
  - This format will make the report more user friendly and accessible
- Will use the ESRI story map format
  - The Susquehanna River Story uses this format
    - [www.dep.pa.gov/Susquehanna](http://www.dep.pa.gov/Susquehanna)
- What follows will be an overview of the look and content





HOME



INTRODUCTION

SECTION 303(d)

SECTION 305(b)

MEASURING PROGRESS

CONTACT US

ADDITIONAL RESOURCES

HOME

# 2018 PENNSYLVANIA INTEGRATED WATER QUALITY MONITORING AND ASSESSMENT REPORT

Clean Water Act

Section 303(d) List and 305(b) Report













Just like Pennsylvania's waters, the datasets used to create this report are extensive. DEP has many data collection protocols designed to measure water quality. From those data collection protocols, DEP builds various assessment methods designed for Use determinations. Click the links below to see these collection protocols and assessment methods.

[DEP DATA COLLECTION PROTOCOLS](#)

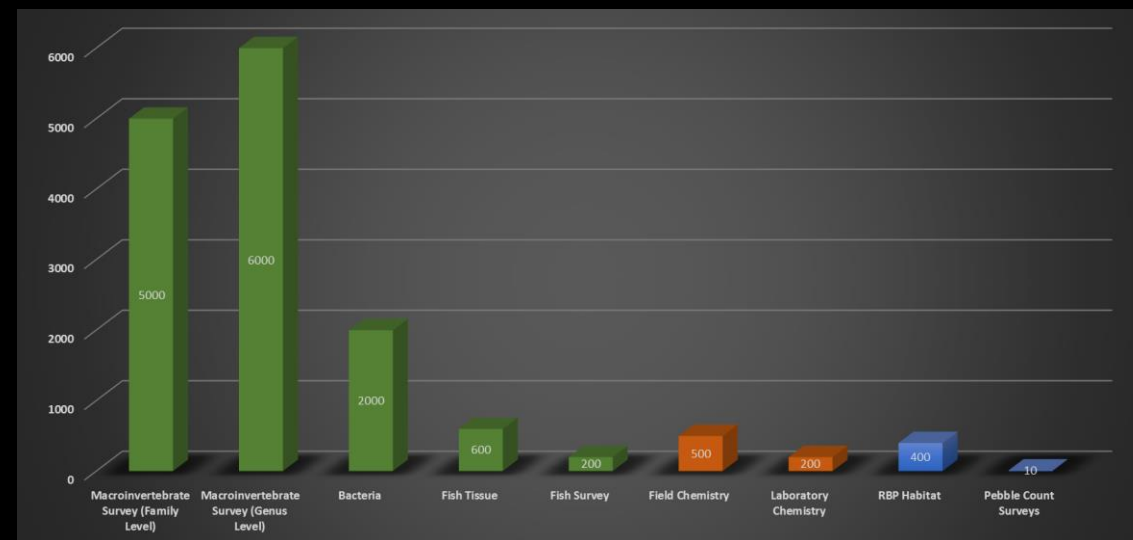
[DEP USE ASSESSMENT METHODS](#)

DEP readily accepts all outside datasets. By using a set of acceptance tiers, DEP ensures that all data are used according to their purpose and quality assurance. Click below to view DEP's data solicitation report.

[DEP'S TIERED DATA ACCEPTANCE POLICY](#)

[DEP'S DATA SOLICITATION REPORT](#)

## DEP DATA OVERVIEW



[Print Chart](#)

[Email Chart](#)

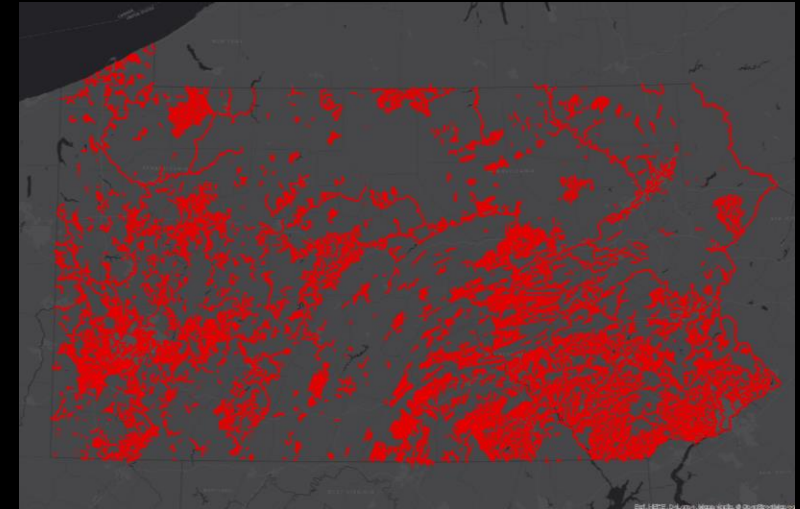
○ LISTING DATA

Section 303(d), also is the list of impaired waters that require the development of a TMDL (Category 5) or alternative restoration plan (Category 5alt).

Starting in 2016, DEP created an [Integrated Report Viewer](#) that allows users to view the status of waters under all categories. This has significantly increased the usability and transparency of this report. As in the past, users may also download the [Integrated Report as a PDF](#).

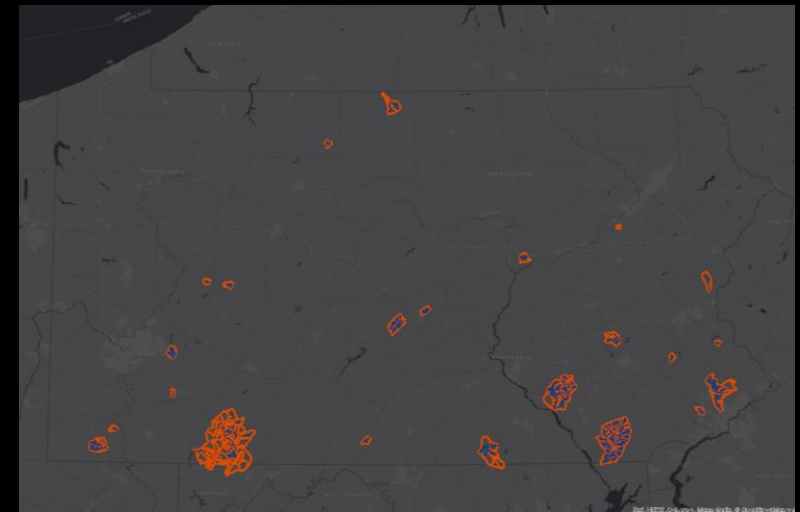
Category 5alt is a list of priority waters across Pennsylvania where the implementation of restoration activities will begin immediately without needed a TMDL. The list of waters under category 5alt may also be downloaded [as a PDF](#).

303(d) LIST



View Streams and Lakes in Category 5

[Print Map](#) [Email Map](#)



View Streams and Lakes in Category 5alt

[Print Map](#) [Email Map](#)





SECTION 305(b) OF THE CWA REQUIRES STATES TO REPORT THE STATUS OF WATERS AND DESCRIBE THE PROGRAMS IN PLACE TO CONTROL AND IMPROVE WATER QUALITY

WATERFALL AT LEONARD HARRISON STATE PARK

305(b)

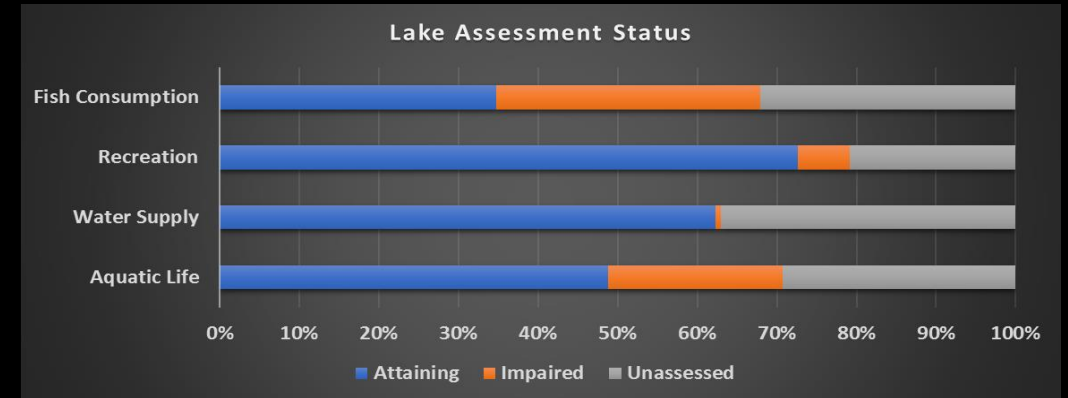


As part of Section 305(b), Section 314 of the CWA requires states to report on the status of significant publicly owned lakes.

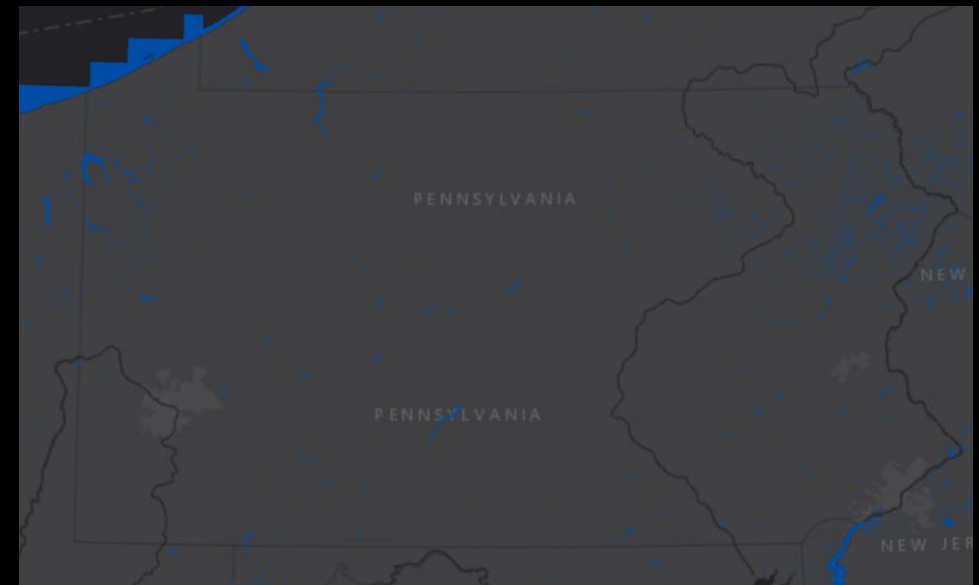
DEP employs both the [WQN sampling method](#) and the [TSI sampling method](#) to collect data. The TSI provides information on a lakes trophic status, which is required for Section 314 reporting. Click on the map to the right to see trophic status of Pennsylvania's significant publicly owned lakes.

Currently, most of these lakes have been assessment for all Uses. [Sources](#) and [causes](#) of lake impairments are available in tabular format.

### ASSESSMENT STATUS OF SIGNIFICANT PUBLICALLY OWED LAKES

[Print Chart](#)[Email Chart](#)

### TROPIC STATUS OF SIGNIFICANT PUBLICALLY OWED LAKES

[Print Map](#)[Email Map](#)



DEP has a series of programs in place to control sources of water quality impacts. Click on each program to see an overview of how the program protects water quality, how much the program invests in protecting water, and to visit that program's website.

NATIONAL POLLUTION DISCHARGE ELIMINATION SYSTEM (NPDES)

MINING

OIL AND GAS

SAFE DRINKING WATER

RADIATION PROTECTION

WASTE MANAGEMENT

SEWAGE PLANNING

WETLANDS PROTECTION

NONPOINT SOURCE CONTROL

CONTROL PROGRAMS





DEP also has a series of programs in place to restore water quality. Primary funding sources come from the 319 grant (\$1,000,000 annually) and Pennsylvania's Growing Greener funds (\$3,000,000 annually). Click on each program to see an overview of how the program restores water quality and to visit that program's website.

[TMDLS](#)[RESTORATION ALTERNATIVES](#)[SECTION 319 PROGRAM/GROWING GREENER](#)[LAND RECYCLING REMEDIATION PROGRAM \(ACT 2\)](#)[ABANDONED MINE RECLAMATION](#)

# Summary

- Format changes will make the process more transparent
- Gives the DEP the opportunity to highlight progress
- Document the numerous positive collaborations with other agencies, organizations and private citizens
- Provide information and data in useable and readily available format



**pennsylvania**  
DEPARTMENT OF ENVIRONMENTAL  
PROTECTION



Bureau of Clean Water

# Contact Information

**Gary Walters**

**Phone: 717-783-7964**

**Email: [gawalters@pa.gov](mailto:gawalters@pa.gov)**