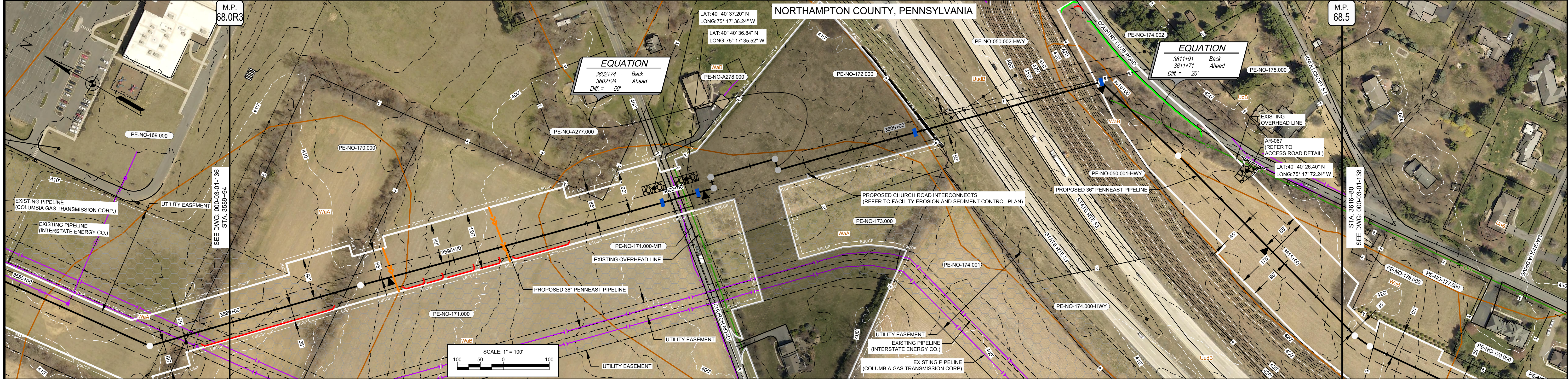
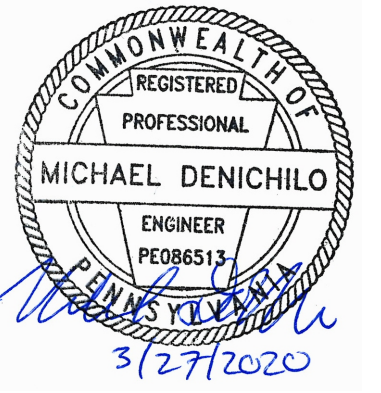
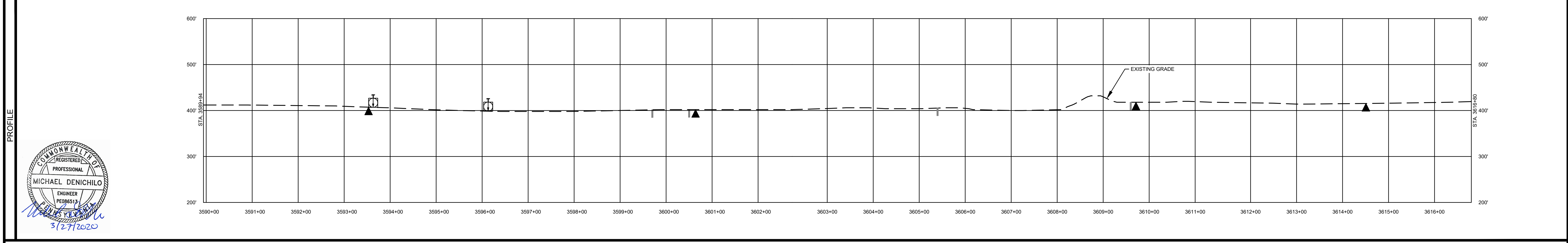


OWNERSHIP / FOOTAGE	PE-NO-170.000 266'	PE-NO-171.000 739'	PE-NO-171.000-MR 30'	PE-NO-172.000 584'	PE-NO-350.001-HWY 1137'
STATIONING	3599+94	3599+200	3599+300	3599+200	3599+683



LAND USE	AG	UF	AG	RD	AG	RD	OL/ROW	RD	OL/ROW	
WATERSHED NAME	BUSHKILL CREEK			NANCY RUN						
WATERSHED CLASSIFICATION	HQ-CWF, MF			CWF, MF						
SOILS	Waa		Wab		Waa	Wab	UudB	Wab	Uob	Wab
WATERBODY CROSSING METHOD	CLASS III									
CLASS LOCATION	0.50									
DESIGN FACTOR	1480 PSIG									
MAOP										



	LAND USE	MATERIAL	REFERENCE DRAWINGS	REVISIONS	APPROVALS	SCALE PLAN: 1" = 100' SCALE PROFILE H: 1" = 100' SCALE PROFILE V: 1" = 100' PREPARED FOR: PennEast PIPELINE PENNEAST PIPELINE PROJECT SOIL EROSION AND SEDIMENT CONTROL PLAN ALIGNMENT SHEET PENNEAST MAINLINE NORTHAMPTON COUNTY, PENNSYLVANIA 36" PENNEAST PIPELINE STA. 3589+94 TO STA. 3616+80 SCALE: 1" = 100' DRAWING NO.: 000-03-01-137 REVISION: C
	1. AGRICULTURAL (AG) 2. COMMERCIAL / INDUSTRIAL (CI) 3. UPLAND FOREST (UF) 4. INSTITUTIONAL (IN) 5. URBAN (UR) 6. OPEN LAND (EXISTING ROW, OPEN FIELDS, NON-AGRICULTURAL) (OL) 7. RESIDENTIAL (RE) 8. ROADWAYS / RAILROADS (RD) 9. SPECIAL LAND USE (CHURCHES, PARKS, ETC) (SP)	TAG QUANTITY DESCRIPTION 10. OPEN WATERBODIES (WB / OW)	DWG. NO. TITLE 000-01-01-001B TABLE OF CONTENTS AND LEGEND 000-03-03-048.01 ACCRSS ROAD DETAIL	NO. REVISIONS A ISSUED FOR PADEP B REVISED FOR PADEP C REVISED FOR PADEP	DATE DRAWN CK APPR 10/2018 A.J.D (MM) M.W.F (MM) M.J.D (MM) 10/2019 A.J.D (MM) H.N.B (MM) M.J.D (MM) 02/2020 A.J.D (MM) K.E.K (MM) M.J.D (MM)	

G:\PENNEAST\353754_PENNEAST_PIPELINE_EPC\MIDAT\PRODDL_STATE_PERMIT\WORK\PA\DRAWING\EROSION_SEDIMENT_CONTROL_PLAN-2019_12_18_CHURCH_RD_INTERCONNECT\000-03-01-137.DWG\2020\02\28 DUM64749