

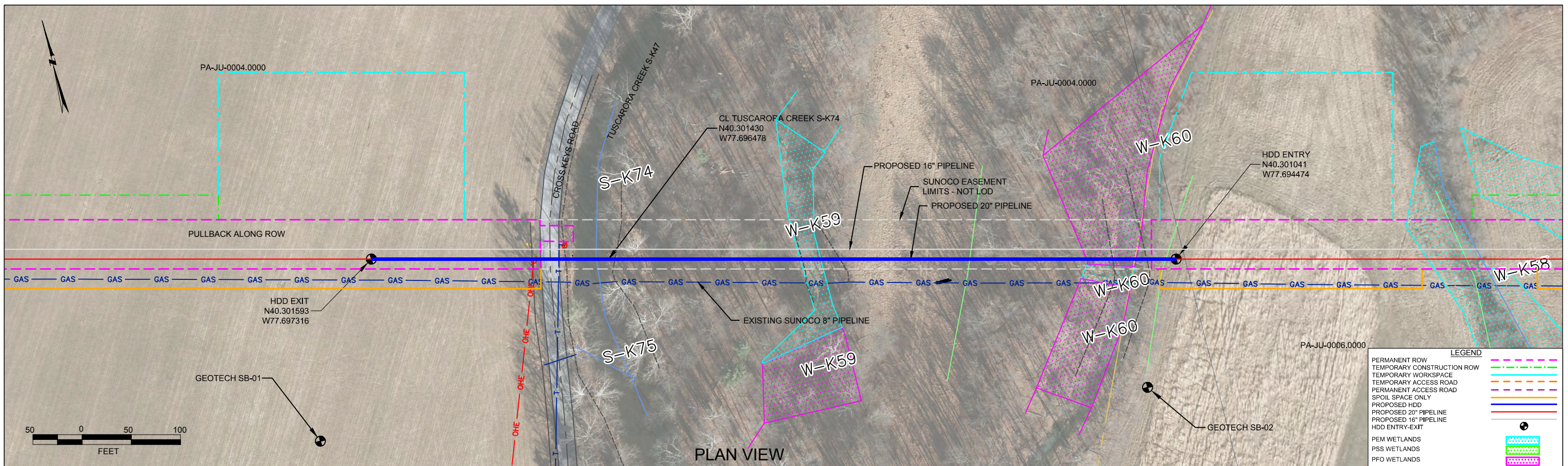
**Attachment A
HDD Table
Juniata County**

Drawing Name	Drill Name	County	Township	Drill Location	Risk Assessment Level (Low / Medium / High)
PA-JU-0004.0000-WX.pdf	Cross Keys Road	Juniata	Lack	N: 40.301593 W: 77.697316	low

HDD PA-JU-0004.0000-WX (S-K74) (W-K59) (W-K60)

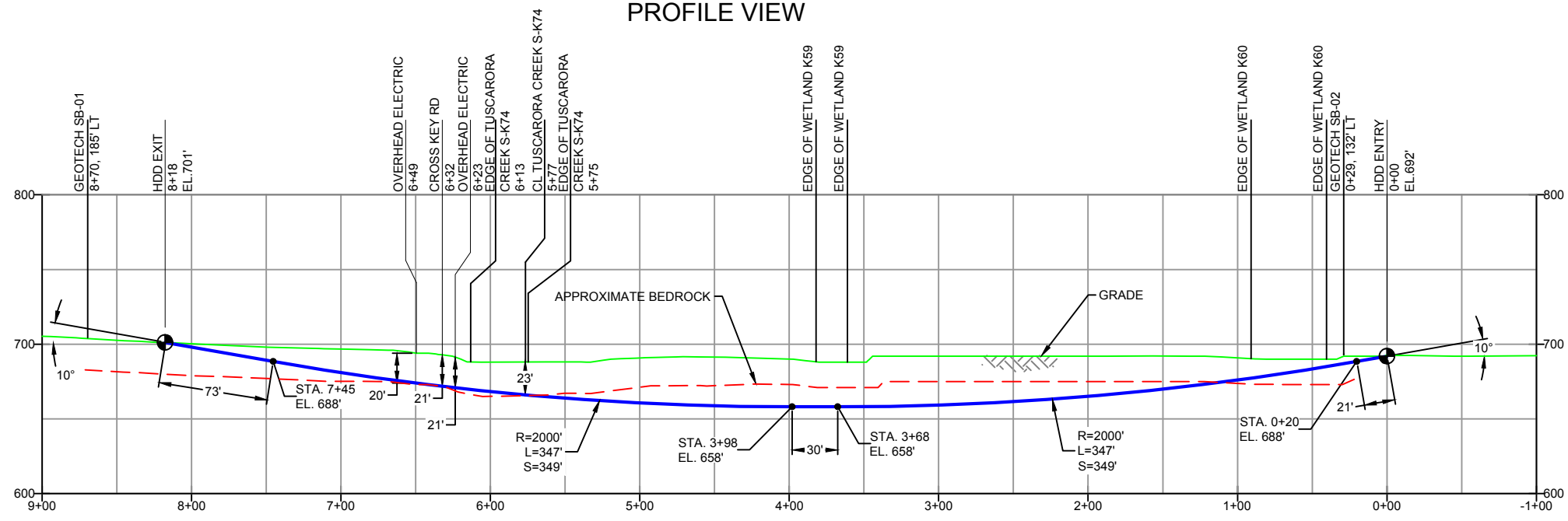
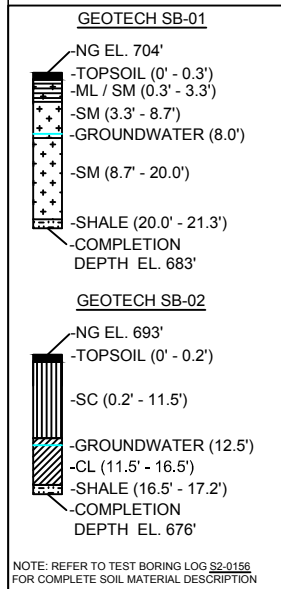
Given the design, the threat of inadvertent return has been reduced to the maximum extent practicable and in this case that threat is considered to be *low*. Implementing this design, along with adherence to the Pennsylvania Pipeline Project Inadvertent Return Contingency Plan will ensure inadvertent impacts, if they were to occur, are also minimized to the maximum extent.

The drill will enter/exit 225 feet from the edge of the western most boundary of the stream S-K74. The drill will travel beneath stream S-K74 for 33 feet. Using the results of the geotechnical investigation, as well as several other data points, the entry/exit, angles, and depths have been configured to pass through the best substrates while maintaining pipe integrity (e.g., no large bends). The majority of the substrate that will be passed through is estimated to be weathered grey shale. The drill will continue beneath the eastern most boundary of the stream S-K74 and will travel 200 feet from the eastern most edge of stream S-K74 to the western most edge of wetland W-K59. The drill will pass 20 feet under the wetland W-K59 starting at the western most boundary. The majority of the substrate that will be passed through is estimated to be weathered grey shale. The drill will pass 265 feet under the wetland W-K59 to the western most edge of wetland W-K60. The drill will pass 55 feet under the wetland W-K60 starting at the western most boundary. The majority of the substrate that will be passed through is estimated to be weathered grey shale. The drill will pass the eastern most boundary of wetland W-K60 and will enter/exit 60 feet from the eastern most edge of wetland W-K60.



PROFILE VIEW

JUNIATA COUNTY PENNSYLVANIA, LACK TOWNSHIP
S2-0156



DESIGN AND CONSTRUCTION:

- CONTRACTOR SHALL FIELD VERIFY DEPTH OF ALL EXISTING UTILITIES SHOWN OR NOT SHOWN ON THIS DRAWING.
- THE MINIMUM SEPARATION DISTANCE FROM EXISTING SUBSURFACE UTILITIES SHALL NOT BE LESS THAN 10 FEET AS MEASURED FROM THE OUTSIDE EDGE OF THE UTILITY TO OUTSIDE OF PROPOSED PIPELINE.
- DESIGNED IN ACCORDANCE WITH CFR 49 195 & ASME B31.4
- CROSSING PIPE SPECIFICATION:
HDD HORZ. LENGTH (L)=818'
HDD PIPE LENGTH (S)=823'
20" x 0.456" W.T., X-65, API5L, PSL2, ERW, BFW
COATING: 14-16 MILS FBE WITH 30-35 MIL ARO (POWERCRETE R95)
- INTERNAL DESIGN PRESSURE 1480 PSIG (SEAM FACTOR 1.0, DESIGN FACTOR 0.50).
- INSTALLATION METHOD: HORIZONTAL DIRECTIONAL DRILL (HDD).
- PIPELINE WARNING MARKERS SHALL BE INSTALLED ON BOTH SIDES OF ALL ROAD, RAILWAY, AND STREAM CROSSINGS.
- CARRIER PIPE NOT ENCASED.
- PIPE / AMBIENT TEMPERATURE MUST BE NO LESS THAN 30°F DURING PULLBACK WITHOUT PRIOR WRITTEN APPROVAL FROM THE ENGINEER.
- CONDUCT 4-HOUR PRE-INSTALLATION HYDROTEST OF HDD PIPE STRING TO MINIMUM 1850 PSIG.
- SEE SUNOCO PENNSYLVANIA PIPELINE PROJECT ESRI WEBMAP FOR ACCESS ROAD ALIGNMENT.
- SUNOCO PIPELINE, L.P.'S HORIZONTAL DIRECTIONAL DRILL INADVERTENT RETURN CONTINGENCY PLAN WILL BE IMPLEMENTED AT ALL TIMES.
- SUNOCO PIPELINE, L.P.'S EROSION AND SEDIMENTATION CONTROL PLAN WILL BE IMPLEMENTED AT ALL TIMES.

NOTES

- ALL COORDINATES SHOWN ARE IN LATITUDE AND LONGITUDE. ALL MSL ELEVATIONS ARE NAD83
- STATIONING IS BASED ON HORIZONTAL DISTANCES.
- ROONEY ENGINEERING, INC. AND SUNOCO PIPELINE, LP ARE NOT RESPONSIBLE FOR LOCATION OF FOREIGN UTILITIES SHOWN IN PLOT PLAN OR PROFILE. THE INFORMATION SHOWN HEREON IS FURNISHED WITHOUT LIABILITY ON THE PART OF ROONEY ENGINEERING, INC. AND SUNOCO PIPELINE, LP. FOR ANY DAMAGES RESULTING FROM ERRORS OR OMISSIONS THEREIN.
- CONTRACTOR IS RESPONSIBLE FOR LOCATING ALL UTILITIES. CONTACT ONE CALL AT 811 PRIOR TO DIGGING.
- SUNOCO EMERGENCY HOTLINE NUMBER IS #1-800-786-7440.

REF. DRAWING		REVISIONS	
ES-3.05	TO ES-3.05	EROSION & SEDIMENT PLAN	EP2 REVISED PER PADEP COMMENTS RECEIVED 09-06-16
SHEET 3	TO SHEET 3	AERIAL SITE PLAN	EP1 REVISED PER PADEP COMMENTS
			EP
			C ADDED GEOTECH INFO
			B ISSUED FOR BID
			A ISSUED FOR REVIEW
DWG NO	DWG NO	DESCRIPTION	NO.

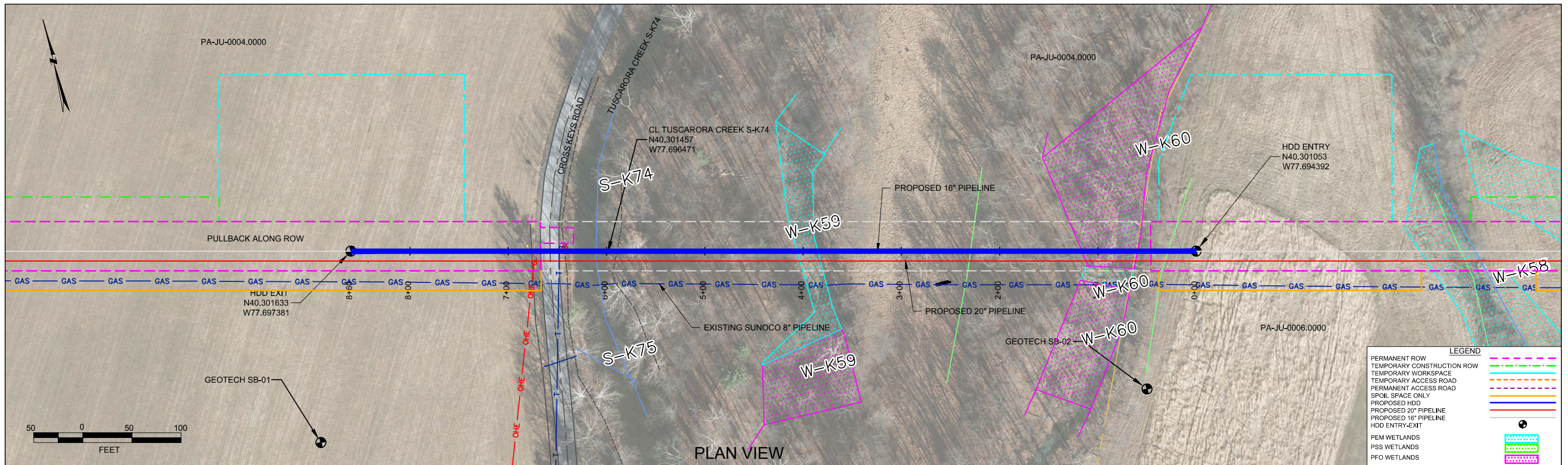
Sunoco Logistics Partners L.P.

TETRA TECH ROONEY
(303) 792-5911

SUNOCO PIPELINE, L.P.

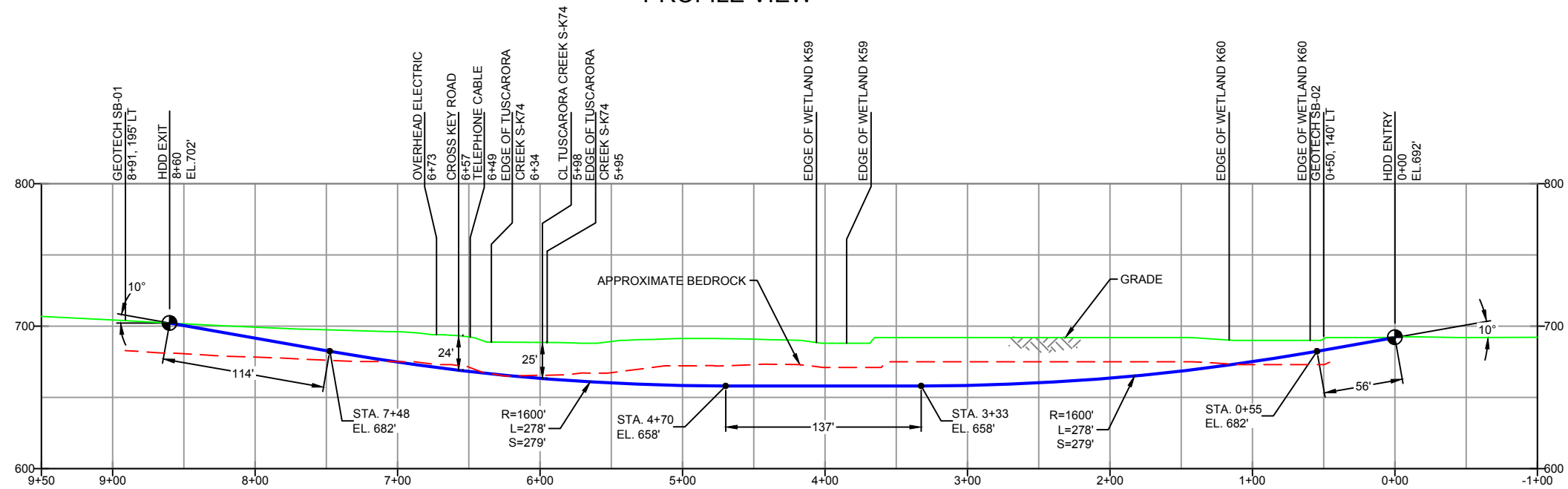
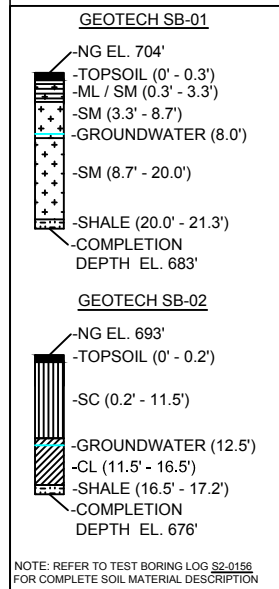
20-INCH HORIZONTAL DIRECTIONAL DRILL
CROSS KEYS RD
PENNSYLVANIA PIPELINE PROJECT

SCALE: 1"=100' DWG. NO: PA-JU-0004.0000-WX



JUNIATA COUNTY PENNSYLVANIA, LACK TOWNSHIP
S2-0156-16

PROFILE VIEW



DESIGN AND CONSTRUCTION:

- CONTRACTOR SHALL FIELD VERIFY DEPTH OF ALL EXISTING UTILITIES SHOWN OR NOT SHOWN ON THIS DRAWING.
- THE MINIMUM SEPARATION DISTANCE FROM EXISTING SUBSURFACE UTILITIES SHALL NOT BE LESS THAN 10 FEET AS MEASURED FROM THE OUTSIDE EDGE OF THE UTILITY TO OUTSIDE OF PROPOSED PIPELINE.
- DESIGNED IN ACCORDANCE WITH CFR 49 195 & ASME B31.4
- CROSSING PIPE SPECIFICATION:
HDD HORZ. LENGTH (L)=860'
HDD PIPE LENGTH (S)=865'
16" x 0.438" W.T., X-70, API5L, PSL2, ERW, BFW
COATING: 14-16 MILS FBE WITH 30-35 MIL ARO (POWERCRETE R95)
- INTERNAL DESIGN PRESSURE 1480 PSIG (SEAM FACTOR 1.0, DESIGN FACTOR 0.50).
- INSTALLATION METHOD: HORIZONTAL DIRECTIONAL DRILL (HDD).
- PIPELINE WARNING MARKERS SHALL BE INSTALLED ON BOTH SIDES OF ALL ROAD, RAILWAY, AND STREAM CROSSINGS.
- CARRIER PIPE NOT ENCASED
- PIPE / AMBIENT TEMPERATURE MUST BE NO LESS THAN 30°F DURING PULLBACK WITHOUT PRIOR WRITTEN APPROVAL FROM THE ENGINEER
- CONDUCT 4-HOUR PRE-INSTALLATION HYDROTEST OF HDD PIPE STRING TO MINIMUM 1850 PSIG.
- SEE SUNOCO PENNSYLVANIA PIPELINE PROJECT ESRI WEBMAP FOR ACCESS ROAD ALIGNMENT.
- SUNOCO PIPELINE, L.P.'S HORIZONTAL DIRECTIONAL DRILL INADVERTENT RETURN CONTINGENCY PLAN WILL BE IMPLEMENTED AT ALL TIMES.
- SUNOCO PIPELINE, L.P.'S EROSION AND SEDIMENTATION CONTROL PLAN WILL BE IMPLEMENTED AT ALL TIMES.

NOTES

- ALL COORDINATES SHOWN ARE IN LATITUDE AND LONGITUDE. ALL MSL ELEVATIONS ARE NAD83
- STATIONING IS BASED ON HORIZONTAL DISTANCES
- ROONEY ENGINEERING, INC. AND SUNOCO PIPELINE, LP ARE NOT RESPONSIBLE FOR LOCATION OF FOREIGN UTILITIES SHOWN IN PLOT PLAN OR PROFILE. THE INFORMATION SHOWN HEREON IS FURNISHED WITHOUT LIABILITY ON THE PART OF ROONEY ENGINEERING, INC. AND SUNOCO PIPELINE, LP. FOR ANY DAMAGES RESULTING FROM ERRORS OR OMISSIONS THEREIN.
- CONTRACTOR IS RESPONSIBLE FOR LOCATING ALL UTILITIES. CONTACT ONE CALL AT 811 PRIOR TO DIGGING.
- SUNOCO EMERGENCY HOTLINE NUMBER IS #1-800-786-7440.

REF. DRAWING		REVISIONS	
ES-3.05	TO	ES-3.05	DESCRIPTION
SHEET 3	TO	SHEET 3	AERIAL SITE PLAN
		EP2	REVISED PER PADEP COMMENTS RECEIVED 09-06-16
		EP1	REVISED PER PADEP COMMENTS
		EP	
		B	ADDED GEOTECH INFO
		A	ISSUED FOR BID
DWG NO	DWG NO	NO.	DESCRIPTION

Sunoco Logistics Partners L.P.

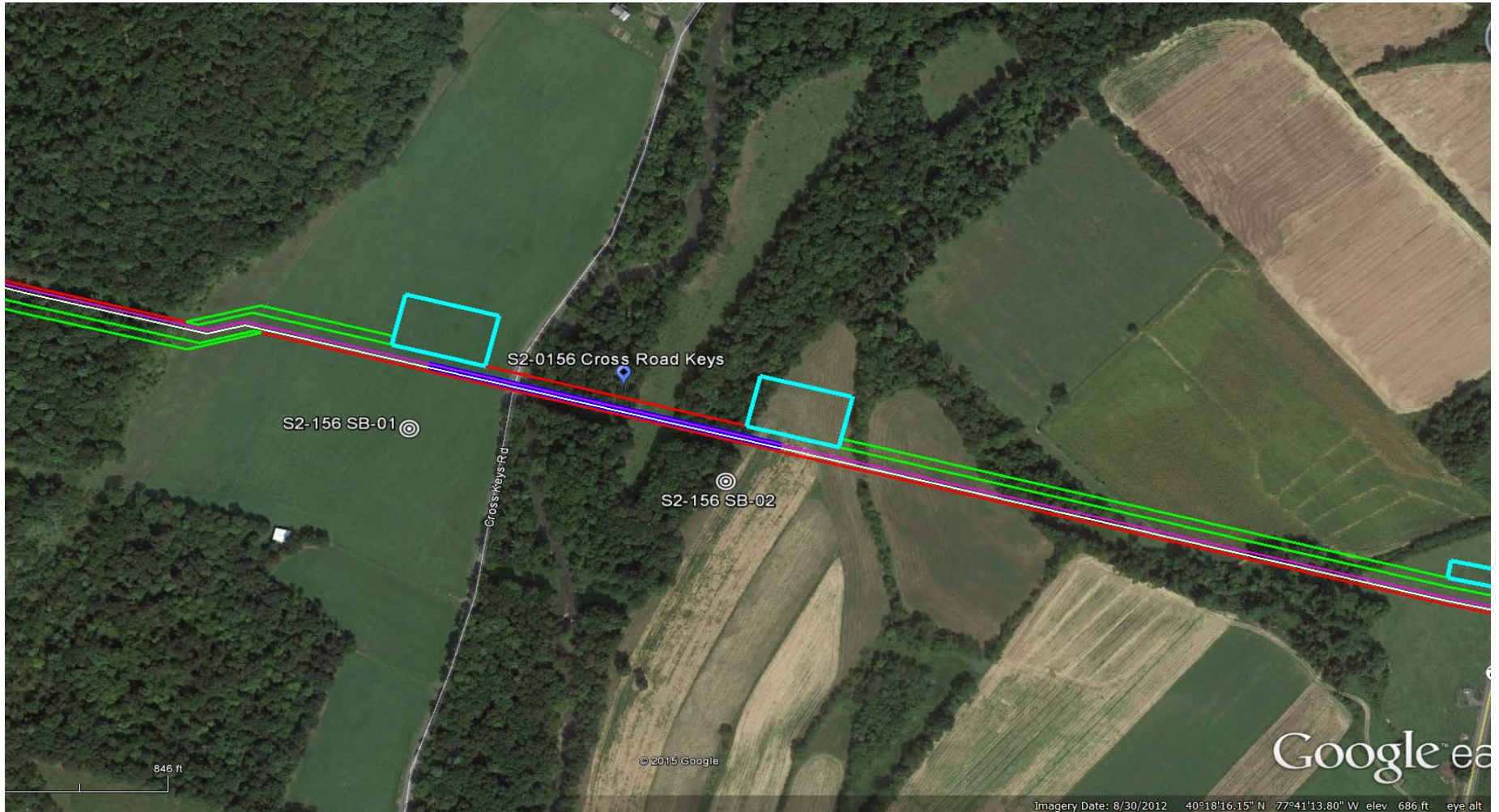
TETRA TECH ROONEY
(303) 792-5911

BY	DATE	CHK	DATE	APP	DATE
DLM	10/07/16	RMB	10/07/16	AAW	10/07/16
JTW	05/18/16	RMB	05/18/16	AAW	05/18/16
MRS	03/15/16	RMB	03/15/16	AAW	03/15/16
MRS	09/14/15	RMB	09/14/15	AAW	09/14/15
MRS	08/31/15	RMB	08/31/15	AAW	08/31/15

SUNOCO PIPELINE, L.P.

16-INCH HORIZONTAL DIRECTIONAL DRILL
CROSS KEYS RD
PENNSYLVANIA PIPELINE PROJECT

SCALE: 1"=100' DWG. NO: PA-JU-0004.0000-WX-16



LEGEND:

⊙ Geotechnical Soil Boring (SB) Locations



TETRA TECH

GEOTECHNICAL BORING LOCATIONS
HDD S2-0156
JUNIATA COUNTY, LACK TOWNSHIP, PA
SUNOCO PENNSYLVANIA PIPELINE PROJECT



TETRA TECH

240 Continental Drive, Suite 200
 Newark, Delaware 19713
 302.738.7551
 fax: 302.454.5988

TEST BORING LOG

Project Name:	SUNOCO PENNSYLVANIA PIPELINE PROJECT	Project No.:	103IP3406
Project Location:	CROSS KEYS ROAD, EAST WATERFORD, PA	Page 1 of 1	
HDD No.:	S2-0156	Dates(s) Drilled:	10-14-14
Boring No.:	SB-01	Inspector:	E. WATT
Drilling Contractor:	HAD DRILLING	Drilling Method:	SPT - ASTM D1586
		Driller:	S. HOFFER
		Groundwater Depth (ft):	8
		Total Depth (ft):	21.3

Sample No.	Sample Depth (ft)		Strata Depth (ft)		Recov. (ft)	Strata (USCS)	Description of Materials	6" Increment Blows *				N	
	From	To	From	To									
			0.0	0.3			TOPSOIL (3").						
1	3.0	5.0	0.3	3.3	14	ML/SM	MOTTLED (BROWN, ORANGE BROWN, GRAY) SILT AND FINE SAND.	2	10	10	22	20	
			3.3			SM	DR WEATHERED TO MOTTLED (LIGHT GRAY, OR. BROWN, REDDISH BROWN) FINE SAND AND SILT. QUARTZ LENSE 8.6 TO 8.7'.						
				8.7									
2	8.0	9.1	8.7		10	SM	DR WEATHERED TO A DARK GRAY FINE SAND WITH SOME SILT AND SOME FINE SHALE GRAVEL.	9	50	50/1"		>50	
3	13.0	13.9			10	SM	DR WEATHERED TO A GRAY TO ORANGE BROWN FINE TO COARSE SAND, SOME SILT, WITH A LITTLE FINE SHALE GRAVEL.	2	50/5"			>50	
4	18.0	18.9			9	SM	DR WEATHERED TO A DARK GRAY FINE SAND WITH A LITTLE SILT, AND SOME FINE TO COARSE SHALE GRAVEL.	5	50/3"			>50	
				20.0									
5	21.0	21.3	20.0		3		PARTIALLY WEATHERED DARK GRAY SHALE, MIXED WITH FINE SAND AND LITTLE SILT.	50/3"				>50	
				21.3									
							AUGER REFUSAL AT 21'.						
							CAVED AT 21', WATER LEVEL ON CAVE AT 8'.						

Notes/Comments:
Pocket Pentrometer Testing DR: DECOMPOSED ROCK

Strata (USCS) Designations are approximated based on visual review, except where indicated in Description of Materials.

* Number of blows of 140 lb. Hammer dropped 30 in. required to drive 2 in. split-spoon sampler in 6 in. increments.
 N: Number of blows to drive spoon from 6" to 18" interval.



TETRA TECH
 240 Continental Drive, Suite 200
 Newark, Delaware 19713
 302.738.7551
 fax: 302.454.5988

TEST BORING LOG

Project Name: SUNOCO PENNSYLVANIA PIPELINE PROJECT			Project No.: 103IP3406		
Project Location: CROSS KEYS ROAD, EAST WATERFORD, PA			Page 1 of 1		
HDD No.:	S2-0156	Dates(s) Drilled:	10-14-14	Inspector:	E. WATT
Boring No.:	SB-02	Drilling Method:	SPT - ASTM D1586	Driller:	S. HOFFER
Drilling Contractor:	HAD DRILLING	Groundwater Depth (ft):	12.5	Total Depth (ft):	17.2

Sample No.	Sample Depth (ft)		Strata Depth (ft)		Recov. (ft)	Strata (USCS)	Description of Materials	6" Increment Blows *				N	
	From	To	From	To									
			0.0	0.2			TOPSOIL (2").						
1	3.0	5.0	0.2		11	SC	DR WEATHERED TO A REDDISH BROWN FINE TO MEDIUM SAND WITH SOME FINE TO COARSE GRAVEL AND SOME SILTY CLAY.	4	25	28	38	53	
2	8.0	10.0			13		DR WEATHERED TO A BROWN, GRAY TO DARK GRAY FINE SAND, SOME SILTY CLAY, TRACE FINE GRAVEL. QUARTZ LENSE 8.6-8.8'.	13	35	24	20	59	
				11.5		CL	DR WEATHERED TO A BROWN AND ORANGE BROWN SILTY CLAY WITH A LITTLE FINE SHALE GRAVEL. (USCS: CL).						
3	13.0	15.0	11.5		17		DR WEATHERED TO A BROWN AND ORANGE BROWN SILTY CLAY WITH A LITTLE FINE SHALE GRAVEL. (USCS: CL).	2	2	4	5	6	
4	17.0	17.2	16.5	17.2	1		PARTIALLY WEATHERED GRAY TO DARK GRAY SHALE.	50/2"				>50	
							AUGER REFUSAL AT 17'. SUBSEQUENTLY OFF-SET BORING AND CONTINUOUSLY AUGERED TO REFUSAL AT 16.2'.						
							WET ON SPOON AT 9'						
							WATER LEVEL THROUGH AUGERS AT 12.5'						
							CAVED AT 16'						
							WATER LEVEL ON CAVE AT 15'.						

Notes/Comments:
Pocket Pentrometer Testing DR: DECOMPOSED ROCK

Strata (USCS) Designations are approximated based on visual review, except where indicated in Description of Materials.

* Number of blows of 140 lb. Hammer dropped 30 in. required to drive 2 in. split-spoon sampler in 6 in. increments.
 N: Number of blows to drive spoon from 6" to 18" interval.

**GEOTECHNICAL LABORATORY TESTING SUMMARY
SUNOCO PENNSYLVANIA PIPELINE PROJECT
HDD S2-0156**

HDD No.	Test Boring No.	Sample No.	Depth of Sample (ft.)		Water Content, % (ASTM D2216)	Percent Silts/Clays, % (ASTM D1140)	Atterburg Limits (ASTM D4318)			USCS Classif. (ASTM D2487)
			From	To			Liquid Limit, %	Plastic Limit, %	Plasticity Index, %	
S2-0156	SB-01	1	3.0	5.0	14.9	44.4	-	-	-	-
		2	8.0	9.1	6.7	23.2	-	-	-	-
		3	13.0	13.9	11.8	24.4	-	-	-	-
		4	18.0	18.9	13.3	20.5	-	-	-	-
		5	21.0	21.3	10.7	28.6	-	-	-	-
	SB-02	1	3.0	5.0	5.4	21.6	-	-	-	-
		2	8.0	10.0	10.2	30.5	-	-	-	-
		3	13.0	15.0	72.9	98.5	37	22	15	CL

Notes:

- 1) Sample depths based on feet below grade at time of exploration.

REGIONAL GEOLOGY SUMMARY
SUNOCO PENNSYLVANIA PIPELINE PROJECT
HDD S2-0156

HDD No.	NAME	BORING NO.	REGIONAL GEOLOGY DESCRIPTION	GENERAL TOPOGRAPHIC SETTING	BEDROCK FORMATION	GENERAL ROCK TYPE	APPROX MAX FM THICKNESS (FT)	DEPTH TO ROCK (Ft bgs) based on nearby well drilling logs	NOTES / COMMENTS
S2-0156	Cross Keys	SB-01	Mahantango Fm - gray, dark gray, brown, and olive laminated shale; siltstone; and very fine-grained sandstone or claystone containing marine fossils	Valley	Mahatango (aka Hamilton Group)	Shale-siltstone, laminated, fossiliferous		14-38	
		SB-02	Keyser/Tonoloway Fm -dark-gray, highly fossiliferous, crystalline to nodular limestone with shaly limestone near its top. Wills Creek Fm -variegated gray, grayish-red, yellowish-gray and greenish-gray calcareous shale with interbedded limestone, dolomite, and sandstone zones		Keyser/Tonoloway Fm	See notes			Keyser and Tonoloway Formations, undivided - In descending order: Keyser Formation--medium-gray, crystalline to nodular, fossiliferous limestone; upper part laminated and mud-cracked; not present east of Harrisburg; Tonoloway Formation--medium-gray, laminated, mud-cracked limestone containing some medium-dark- or olive-gray shale interbeds; lower part passes into Wills Creek Formation east and south

Note : Source of well log data - <http://www.dcnr.state.pa.us/topogeo/groundwater/pagwis/records/index.htm>. All other sources as referenced in comments section.

FIELD DESCRIPTION AND LOGGING SYSTEM FOR SOIL EXPLORATION

GRANULAR SOILS

(Sand, Gravel & Combinations)

<u>Density</u>	<u>N (blows)*</u>
Very Loose	5 or less
Loose	6 to 10
Medium Dense	11 to 30
Dense	31 to 50
Very Dense	51 or more

Particle Size Identification

Boulders	8 in. diameter or more
Cobbles	3 to 8 in. diameter
Gravel	Coarse (C) 3 in. to ¾ in. sieve Fine (F) ¾ in. to No. 4 sieve
Sand	Coarse (C) No. 4 to No. 10 sieve (4.75mm-2.00mm) Medium (M) No. 10 to No. 40 sieve (2.00mm – 0.425mm) Fine (F) No. 40 to No. 200 sieve (0.425 – 0.074mm)
Silt/Clay	Less Than a No. 200 sieve (<0.074mm)

Relative Proportions

<u>Description Term</u>	<u>Percent</u>
Trace	1 - 10
Little	11 - 20
Some	21 - 35
And	36 - 50

COHESIVE SOILS

(Silt, Clay & Combinations)

<u>Consistency</u>	<u>N (blows)*</u>
Very Soft	3 or less
Soft	4 to 5
Medium Stiff	6 to 10
Stiff	11 to 15
Very Stiff	16 to 30
Hard	31 or more

Plasticity

<u>Degree of Plasticity</u>	<u>Plasticity Index</u>
None to Slight	0 - 4
Slight	5 - 7
Medium	8 - 22
High to Very High	> 22

ROCK

(Rock Cores)

<u>Rock Quality Designation (RQD), %</u>	<u>Rock Quality Description</u>
0-25	Very Poor
25-50	Poor
50-75	Fair
75-90	Good
90-100	Excellent

***N - Standard Penetration Resistance.** Driving a 2.0" O.D., 1-3/8" I.D. sampler a distance of 18 inches into undisturbed soil with a 140 pound hammer free falling a distance of 30.0 inches. The number of hammer blows to drive the sampler through each 6 inch interval is recorded; the number of blows required to drive the sampler through the final 12 inch interval is termed the Standard Penetration Resistance (SPR) N-value. For example, blow counts of 6/8/9 (through three 6-inch intervals) results in an SPR N-value of 17 (8+9).

Groundwater observations were made at the times indicated. Groundwater elevations fluctuate throughout a given year, depending on actual field porosity and variations in seasonal and annual precipitation.

UNIFIED SOIL CLASSIFICATION SYSTEM [Casagrande (1948)]

Major Divisions		Group Symbols	Typical Descriptions	Laboratory Classifications				
Coarse Grained Soils (More than half of material is larger than No. 200 sieve)	Gravels (More than half of coarse fraction is larger than No. 4 sieve size)	Clean gravel (Little or no fines)	GW Well-graded gravels, gravel-sand mixtures, little or no fines	Determine Percentage of sand and gravel from grain size curve. Depending on Percentage of fines (fraction smaller than No. 200 sieve), coarse-grained soils are classified as follows: Less than 5 percent GW, GP, SW, SP More than 12 percent GM, GC, SM, SC 5 to 12 percent Borderline cases requiring dual symbols ⁽¹⁾	$C_u = \frac{D_{60}}{D_{10}}$ greater than 4: $C_c = \frac{(D_{30})^2}{D_{10} \times D_{60}}$ between 1 and 3			
		GP Poorly graded gravels, gravel-sand mixtures, little or no fines	Not meeting C_u or C_c requirements for GW					
		Gravel with fines (Appreciable amount of fines)	GM Silty gravels, gravel-sand-silt mixtures		Atterberg limits below A Line or I_p less than 4	Limits plotting in hatched zone with I_p between 4 and 7 are borderline cases requiring use of dual symbols		
			GC Clayey gravels, gravel-sand-clay mixtures		Atterberg limits above A line with I_p greater than 7			
	Sands (More than half of coarse fraction is smaller than No. 4 Sieve)	Clean sands (Little or no fines)	SW Well graded sands, gravelly sands, little or no fines		$C_u = \frac{D_{60}}{D_{10}}$ greater than 6: $C_c = \frac{(D_{30})^2}{D_{10} \times D_{60}}$ between 1 and 3			
			SP Poorly graded sands, gravelly sands, little or no fines		Not meeting C_u or C_c requirements for SW			
		Sands with fines (Appreciable amount of fines)	SM Silty sands, sand-silt mixtures		Atterberg limits below A Line or I_p less than 4	Limits Plotting in hatched zone with I_p between 4 and 7 are borderline cases requiring use of dual symbols		
			SC Clayey sands, sand-clay mixtures		Atterberg limits above A line with I_p greater than 7			
						For soils plotting nearly on A line use dual symbols i.e., $I_p = 29.5$, $w_L = 60$ gives CH-MH. When w_L is near 50 use CL-CH or ML-MH. Take near as ± 2 percent.		
		Fine-grained soils (More than half of material is smaller than No. 200 sieve)	Silt and clays (Liquid limit less than 50)		ML Inorganic silts and very fine sands, rock flour, silty or clayey fine sands, or clayey silts with slight plasticity			
CL Inorganic clays of low to medium plasticity, gravelly clays, sandy clays, silty clays, lean clays								
OL Organic silts and organic silty clays of low plasticity								
Silt and Clays (Liquid limit greater than 50)	MH Inorganic silts, micaceous or diatomaceous fine sandy or silty soils, elastic silts							
	CH Inorganic clays of high plasticity, fat clays							
	OH Organic clays of medium to high plasticity, organic silts							
Highly organic soils	Pt Peat and other highly organic soils							

(1) Borderline classifications, used for soils possessing characteristics of two groups, are designated by combinations of group symbols. For example: GW-GC. well-graded gravel-sand mixture with clay binder.