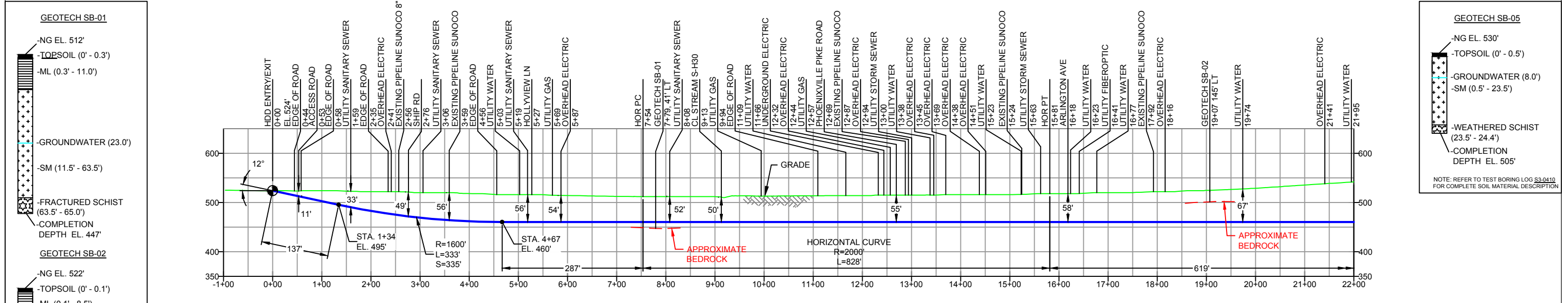


PLAN VIEW

WEST WHITELAND COUNTY, PENNSYLVANIA - CHESTER TOWNSHIP
 WEST GOSHEN COUNTY, PENNSYLVANIA - CHESTER
 S3-0421-16



PROFILE VIEW

GEOTECH SB-01
 -NG EL. 512'
 -TOPSOIL (0' - 0.3')
 -ML (0.3' - 11.0')
 -GROUNDWATER (23.0')
 -SM (11.5' - 63.5')
 -FRACTURED SCHIST (63.5' - 65.0')
 -COMPLETION DEPTH EL. 447'

GEOTECH SB-02
 -NG EL. 522'
 -TOPSOIL (0' - 0.1')
 -ML (0.1' - 8.5')
 -MICA SCHIST (8.5' - 14.0')
 -WEATHERED SCHIST (14.0' - 22.0')
 -COMPLETION DEPTH EL. 500'

GEOTECH SB-05
 -NG EL. 530'
 -TOPSOIL (0' - 0.5')
 -GROUNDWATER (8.0')
 -SM (0.5' - 23.5')
 -WEATHERED SCHIST (23.5' - 24.4')
 -COMPLETION DEPTH EL. 505'

NOTE: REFER TO TEST BORING LOG S3-0410 FOR COMPLETE SOIL MATERIAL DESCRIPTION

- DESIGN AND CONSTRUCTION:
- CONTRACTOR SHALL FIELD VERIFY DEPTH OF ALL EXISTING UTILITIES SHOWN OR NOT SHOWN ON THIS DRAWING.
 - THE MINIMUM SEPARATION DISTANCE FROM EXISTING SUBSURFACE UTILITIES SHALL NOT BE LESS THAN 10 FEET AS MEASURED FROM THE OUTSIDE EDGE OF THE UTILITY TO OUTSIDE OF PROPOSED PIPELINE.
 - DESIGNED IN ACCORDANCE WITH CFR 49 195 & ASME B31.4
 - CROSSING PIPE SPECIFICATION:
 HDD HORIZ. LENGTH (L)=4312'
 HDD PIPE LENGTH (S)=4324'
 16" x 0.438" W.T., X-70, API5L, PSL2, ERW, BFW
 COATING: 14-16 MILS FBE WITH 30-35 MIL ARO (POWERCRETE R95)
 - INTERNAL DESIGN PRESSURE 1480 PSIG (SEAM FACTOR 1.0, DESIGN FACTOR 0.50).
 - INSTALLATION METHOD: HORIZONTAL DIRECTIONAL DRILL (HDD).
 - PIPELINE WARNING MARKERS SHALL BE INSTALLED ON BOTH SIDES OF ALL ROAD, RAILWAY, AND STREAM CROSSINGS.
 - CARRIER PIPE NOT ENCASED.
 - PIPE / AMBIENT TEMPERATURE MUST BE NO LESS THAN 30°F DURING PULLBACK WITHOUT PRIOR WRITTEN APPROVAL FROM THE ENGINEER.
 - CONDUCT 4-HOUR PRE-INSTALLATION HYDROTEST OF HDD PIPE STRING TO MINIMUM 1850 PSIG.
 - SEE SUNOCO PENNSYLVANIA PIPELINE PROJECT ESRI WEBMAP FOR ACCESS ROAD ALIGNMENT.
 - SUNOCO PIPELINE, L.P.'S HORIZONTAL DIRECTIONAL DRILL INADVERTENT RETURN CONTINGENCY PLAN WILL BE IMPLEMENTED AT ALL TIMES.
 - SUNOCO PIPELINE, L.P.'S EROSION AND SEDIMENTATION CONTROL PLAN WILL BE IMPLEMENTED AT ALL TIMES.

NOTES

- ALL COORDINATES SHOWN ARE IN LATITUDE AND LONGITUDE. ALL MSL ELEVATIONS ARE NAD83
- STATIONING IS BASED ON HORIZONTAL DISTANCES
- ROONEY ENGINEERING, INC. AND SUNOCO PIPELINE, LP ARE NOT RESPONSIBLE FOR LOCATION OF FOREIGN UTILITIES SHOWN IN PLOT PLAN OR PROFILE. THE INFORMATION SHOWN HEREON IS FURNISHED WITHOUT LIABILITY ON THE PART OF ROONEY ENGINEERING, INC. AND SUNOCO PIPELINE, LP. FOR ANY DAMAGES RESULTING FROM ERRORS OR OMISSIONS THEREIN.
- CONTRACTOR IS RESPONSIBLE FOR LOCATING ALL UTILITIES. CONTACT ONE CALL AT 811 PRIOR TO DIGGING.
- SUNOCO EMERGENCY HOTLINE NUMBER IS #1-800-786-7440.

| REF. DRAWING | NO. | DESCRIPTION | NO. | DESCRIPTION |
|--------------|-----|-------------|-----|----------------------------------------------|
| ES-6.54 | TO | ES-6.56 | | EROSION & SEDIMENT PLAN |
| SHEET 36 | TO | SHEET 38 | | AERIAL SITE PLAN |
| | | EP2 | | REVISED PER PADEP COMMENTS RECEIVED 09-06-16 |
| | | EP1 | | REVISED PER PADEP COMMENTS |
| | | EP | | |
| | | A | | ISSUED FOR BID |

REVISIONS

| BY | DATE | CHK | DATE | APP | DATE |
|-----|----------|-----|----------|-----|----------|
| MRS | 10/07/16 | RMB | 10/07/16 | AAW | 10/07/16 |
| MRS | 05/18/16 | RMB | 05/18/16 | AAW | 05/18/16 |
| MRS | 03/15/16 | RMB | 03/15/16 | AAW | 03/15/16 |
| MRS | 08/31/15 | RMB | 08/31/15 | AAW | 08/31/15 |



SUNOCO PIPELINE, L.P.

16-INCH HORIZONTAL DIRECTIONAL DRILL
 PHOENIXVILLE PIKE ROAD
 PENNSYLVANIA PIPELINE PROJECT

SCALE: 1"=200' DWG. NO. PA-CH-0290.0000-RDa-16