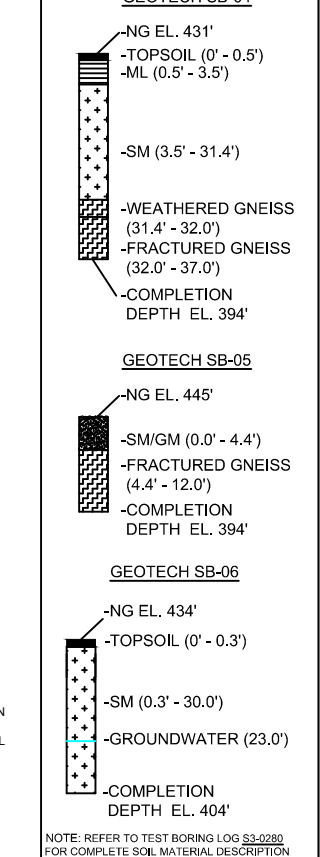
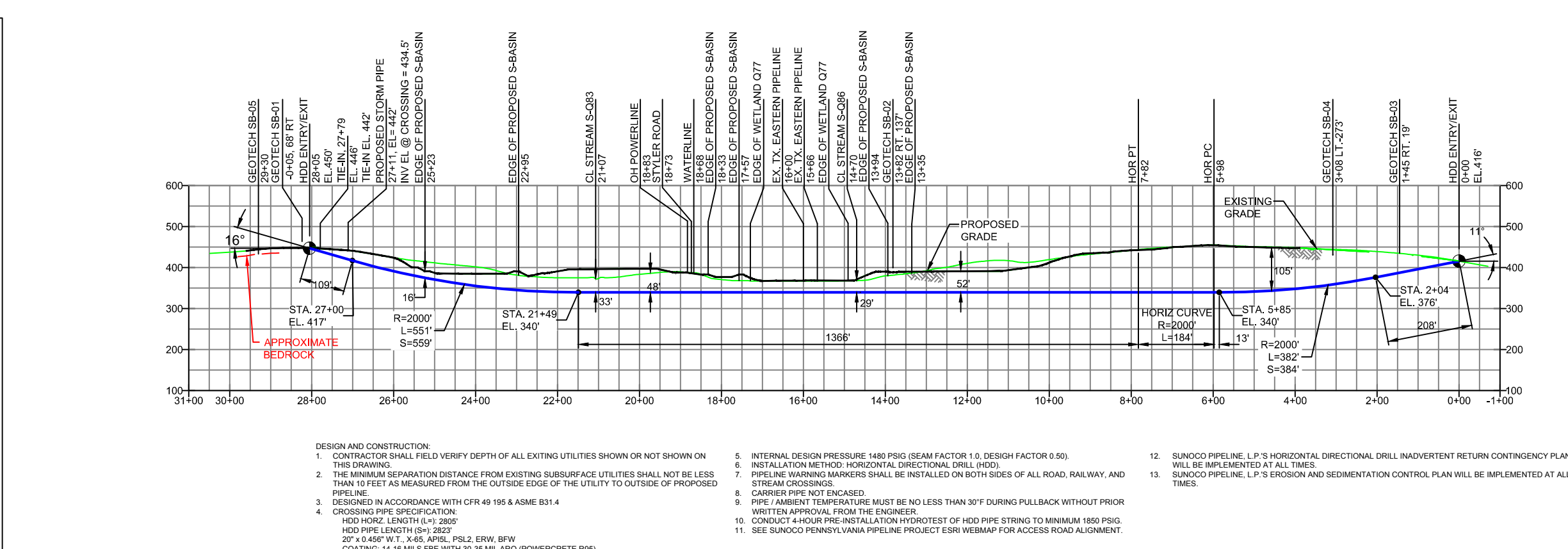
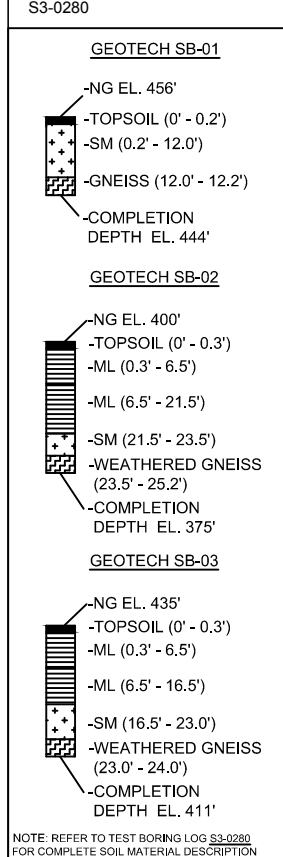


CHASTER COUNTY, PA - UPPER UWCHLAN TOWNSHIP S3-0280



NOTE: REFER TO TEST BORING LOG S3-0280 FOR COMPLETE SOIL MATERIAL DESCRIPTION

NOTES

- ALL COORDINATES SHOWN ARE IN LATITUDE AND LONGITUDE. ALL MSL ELEVATIONS ARE NAD83
- STATIONING IS BASED ON HORIZONTAL DISTANCES.
- ROONEY ENGINEERING, INC. AND SUNOCO PIPELINE, LP ARE NOT RESPONSIBLE FOR LOCATION OF FOREIGN UTILITIES SHOWN IN PLOT PLAN OR PROFILE. THE INFORMATION SHOWN HEREON IS FURNISHED WITHOUT LIABILITY ON THE PART OF ROONEY ENGINEERING, INC. AND SUNOCO PIPELINE, LP. FOR ANY DAMAGES RESULTING FROM ERRORS OR OMISSIONS THEREIN.
- CONTRACTOR IS RESPONSIBLE FOR LOCATING ALL UTILITIES. CONTACT ONE CALL AT 811 PRIOR TO DIGGING.
- SUNOCO EMERGENCY HOTLINE NUMBER IS 1-800-786-7440.

REF. DRAWING

ES-6.24	TO	ES-6.26	EROSION & SEDIMENT PLAN
SHEET 14	TO	SHEET 15	AERIAL SITE PLAN

REVISIONS

NO.	DESCRIPTION	BY	DATE	CHK	DATE	APP	DATE
EP2	REVISED PER PADEP COMMENTS RECEIVED 09-06-16	MRS	09/30/16	RMB	09/30/16	AAW	09/30/16
EP1	REVISED FOR PADEP COMMENTS	JTW	05/05/16	RMB	05/05/16	AAW	05/05/16
EP		MRS	02/26/16	RMB	02/26/16	AAW	02/26/16
0	ISSUED FOR CONSTRUCTION	MRS	02/19/16	RMB	02/19/16	AAW	02/19/16

Sunoco Logistics Partners L.P.

TETRA TECH ROONEY
(303) 792-5911

SUNOCO PIPELINE, L.P.

20-INCH HORIZONTAL DIRECTIONAL DRILL PENNSYLVANIA TURNPIKE 76 PENNSYLVANIA PIPELINE PROJECT

SCALE: 1"=300' DWG. NO: PA-CH-0088.0000-RD