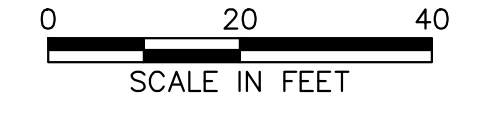
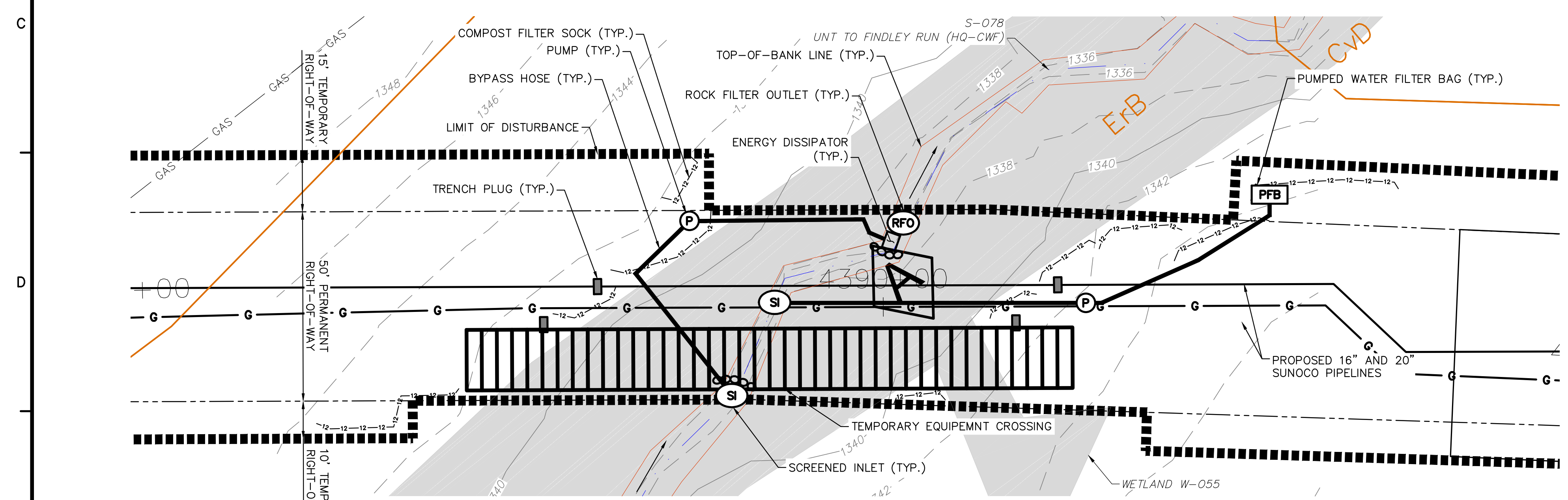


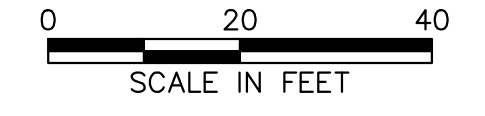
EXISTING CONDITIONS PLAN



- GENERAL NOTES:**
1. REFERENCE E&S PLAN AND SITE RESTORATION NOTES AND DETAILS FOR ADDITIONAL CONSTRUCTION SEQUENCING, TYPICAL DETAILS AND NOTES; AND PLAN SHEETS FOR ADDITIONAL PLANS AND TOPOGRAPHY.
 2. ALL EXISTING UTILITY INFORMATION IS APPROXIMATE. THE CONTRACTOR IS RESPONSIBLE FOR VERIFYING ALL EXISTING UTILITIES PRIOR TO CONSTRUCTION.
 3. MAINTAIN 2'-0" MINIMUM VERTICAL SEPARATION BETWEEN THE PROPOSED PIPELINE AND OTHER UTILITIES.
 4. THE BACKGROUND TOPOGRAPHY WAS OBTAINED FROM TOPOGRAPHIC SURVEYS PERFORMED IN SEPTEMBER 2016.
 5. THE PROJECT IS LOCATED IN NAD83 PENNSYLVANIA STATE PLANE COORDINATE SYSTEM (SOUTH ZONE), NAVD88.
- WETLAND CROSSING NOTES:**
1. REFERENCE E&S PLAN AND SITE RESTORATION NOTES AND DETAILS FOR WETLAND CONSTRUCTION SEQUENCING AND RESTORATION.
 2. A MINIMUM OF 4 FEET COVER UNDER WETLANDS AND UPLANDS IS REQUIRED.
 3. EROSION CONTROL BLANKET SHALL BE PLACED A MINIMUM OF 50 FEET EDGE OF WETLAND OR 100 FEET FROM EDGE OF WETLAND FOR SPECIAL PROTECTION WATERS (HQ OR EV).
- STREAM CROSSING NOTES:**
1. REFERENCE E&S PLAN AND SITE RESTORATION NOTES AND DETAILS FOR STREAM CONSTRUCTION SEQUENCING AND RESTORATION.
 2. TEMPORARY EQUIPMENT BRIDGE CROSSINGS ARE TO BE IMPLEMENTED IN ACCORDANCE WITH THE NOTES AND DETAILS FOR THE IMPLEMENTED METHOD.
 3. SITE CONDITIONS MAY ALLOW FOR IMPLEMENTATION OF OTHER APPROVED PIPELINE INSTALLATION METHODS REFERENCED WITH THE NOTES AND DETAILS.
 4. THE PIPELINES SHALL MAINTAIN A MINIMUM OF 5 FEET OF COVER UNDER STREAMS FROM THE TOP OF PIPE TO THE STREAM BED. THIS COVER WILL BE MAINTAINED AT A MINIMUM FROM TOP OF BANK TO TOP OF BANK.
 5. REFERENCE THE STREAM BANK STABILIZATION DETAIL AND STREAM RESTORATION TABLE IN THE NOTES AND DETAILS WHERE RIP-RAP IS PROPOSED.
 6. EROSION CONTROL BLANKET SHALL BE PLACED A MINIMUM OF 50 FEET FROM TOP OF BANK OR 100 FEET FROM TOP OF BANK FOR SPECIAL PROTECTION WATERS (HQ OR EV).
 7. TIMBERMATS SHALL EXTEND A MINIMUM OF 20- FEET BEYOND TOP OF BANK.
 8. COMPOST FILTER SOCK SHALL BE INSTALLED ALONG THE TOP OF BANK ACROSS THE RIGHT-OF-WAY WHEN PUMP BYPASS IS NOT IN PLACE.



EROSION AND SEDIMENT CONTROL PLAN

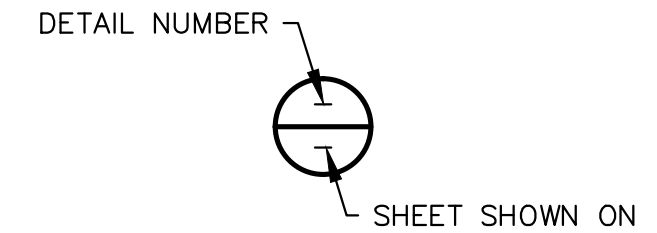


NOTE:
THE PUMPED WATER FILTER BAG LOCATION IS APPROXIMATE. THE LOCATION IN FIELD MAY BE ADJUSTED AS NEEDED TO PERFORM THE WORK.

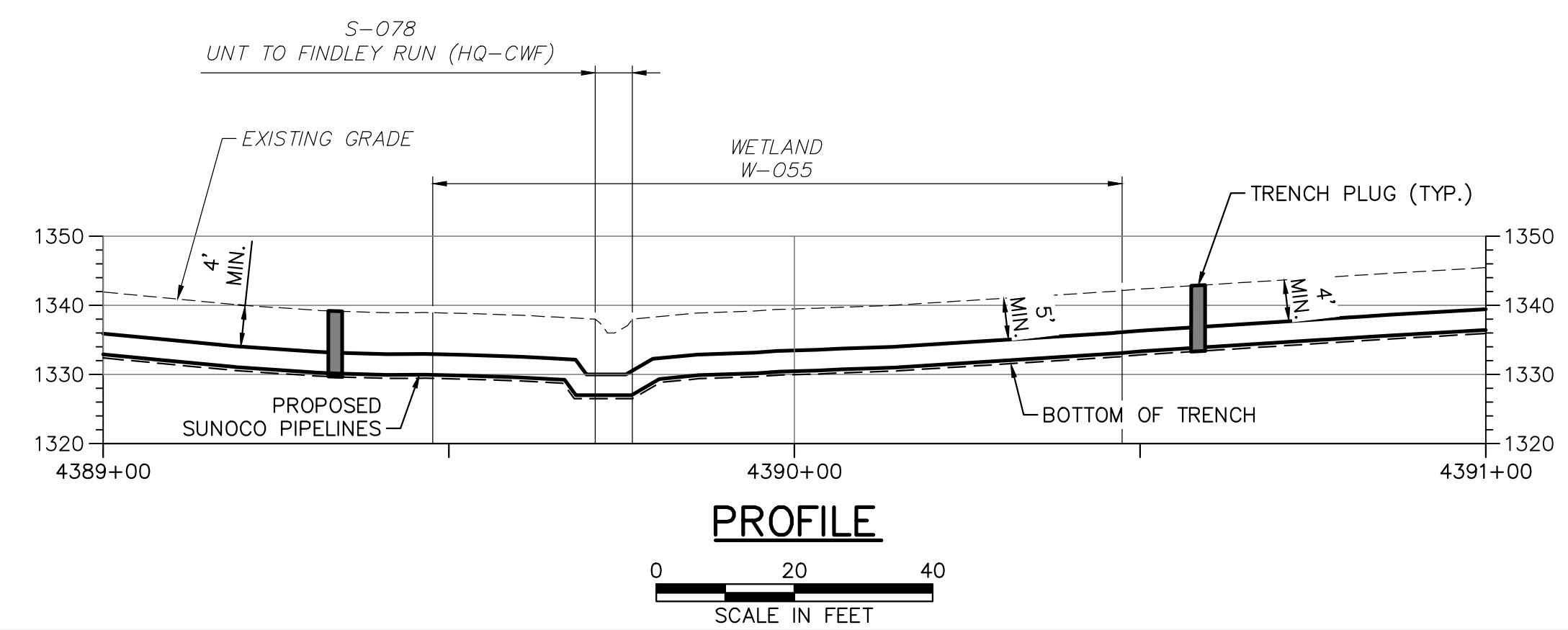
LEGEND

— 1320 —	EXISTING 10' CONTOUR	-----	LIMIT OF DISTURBANCE / AREA TO BE RESTORED
— 1340 —	EXISTING 2' CONTOUR	[Pattern]	AASHTO #1 ROCK CONSTRUCTION ENTRANCE
— x x x —	EXISTING TREE LINE	[Pattern]	AASHTO #1 ROCK CONSTRUCTION ENTRANCE WITH WASH RACKS
— x x x —	EXISTING FENCELINE	[Pattern]	AGGREGATE STOCKPILE
— x x x —	EXISTING STREAMLINE WITH FLOW DIRECTION	— — — —	WATER BAR
— x x x —	EXISTING WATERSHED BOUNDARY	— — — —	EROSION CONTROL BLANKET
— OVH —	EXISTING ELECTRIC OVERHEAD	— 12 — 12 — 12 — 12 —	12" COMPOST FILTER SOCK
— UE —	EXISTING ELECTRIC UNDERGROUND	— 18 — 18 — 18 — 18 —	18" COMPOST FILTER SOCK
— W —	EXISTING WATER LINE	— 24 — 24 — 24 — 24 —	24" COMPOST FILTER SOCK
— GAS —	EXISTING GAS LINE	— CT — CT —	COMPOST SOCK SEDIMENT TRAP
— DOWN —	EXISTING DOMINION GAS LINE	— 12 — 12 — 12 — 12 —	SILT FENCE
— SAN —	EXISTING SANITARY SEWER LINE	— 18 — 18 — 18 — 18 —	SUPER SILT FENCE
[Symbol]	EXISTING BUILDING	— 24 — 24 — 24 — 24 —	REINFORCED SILT FENCE
— — — —	PROPERTY LINE	[Symbol]	TIMBER MATS / TEMPORARY EQUIPMENT BRIDGE
— — — —	COUNTY BOUNDARY	[Symbol]	TRENCH PLUGS
— — — —	TOWNSHIP BOUNDARY	[Symbol]	WATER DEFLECTOR
— — — —	100-YEAR FLOODWAY	[Symbol]	SOIL STOCKPILE
— — — —	100-YEAR FEMA FLOODPLAIN	[Symbol]	HORIZONTAL DIRECTIONAL DRILL
— — — —	WATERSHED BOUNDARY	[Symbol]	AREA TO BE BORED
— — — —	ORANGE CONSTRUCTION FENCE	[Symbol]	AREA TO BE BORED
[Symbol]	EXISTING PEM WETLAND	[Symbol]	CONVENTIONAL BORE
[Symbol]	EXISTING PFO WETLAND	[Symbol]	SCREENED INLET
[Symbol]	EXISTING PSS WETLAND	[Symbol]	PUMP
— G —	PROPOSED PIPE LOCATION	[Symbol]	ENERGY DISSIPATOR
— — — —	PROPOSED RIGHT-OF-WAY	[Symbol]	ROCK FILTER OUTLET
[Symbol]	RIPARIAN FOREST BUFFER	[Symbol]	SANDBAG DAM
		[Symbol]	PUMPED WATER FILTER BAG

DETAIL INDICATOR



- NOTES:**
1. REFER TO CONSTRUCTION SEQUENCE PROVIDED ON ES-0.06 FOR STREAM CROSSINGS.
 2. DETAILS PROVIDED IN UP FRONT SHEETS.
 3. SOIL TYPE DESCRIPTIONS PROVIDED IN ATTACHMENT 5 OF THE EROSION AND SEDIMENT CONTROL PLAN.



PROFILE



661 ANDERSEN DRIVE - FOSTER PLAZA 7
PITTSBURGH, PA 15220
T: (412) 921-7090 | F: (412) 921-4040

REVISIONS			
NO.	BY	DATE	REMARKS

SUNOCO PIPELINE L.P.
SINKING SPRING, PENNSYLVANIA
PENNSYLVANIA PIPELINE PROJECT
CONSTRUCTION SPREAD 2

PROPOSED WELDED STEEL NATURAL GAS LIQUIDS PIPELINES
PADEP-SOUTHWEST REGION
INDIANA COUNTY CONSERVATION DISTRICT
CROSSING WL-055 & S-078
EROSION AND SEDIMENT CONTROL PLAN & PROFILE

DATE:	11/04/16
PROJECT NO.:	112C05958
DESIGNED BY:	BH
DRAWN BY:	BH
CHECKED BY:	RS
COPYRIGHT TETRA TECH INC.	
WL-055-A	
SHEET	1 OF 1