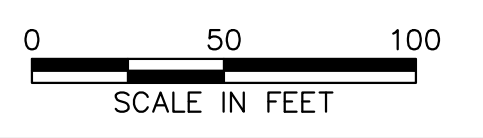
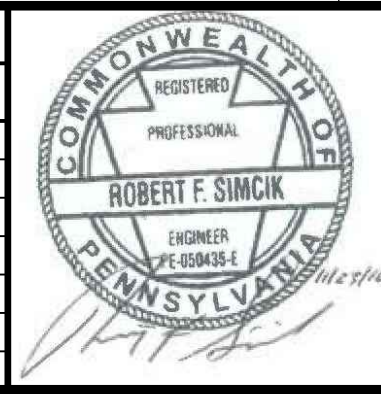




- NOTES:**
- SEE ES-0.01 & ES-0.02 FOR GENERAL NOTES & LEGEND.
 - SEE ES-0.03 FOR STREAM & WETLAND CROSSING TABLES.
 - BMP INSTALLATION TO BE ADJUSTED AS NEEDED TO ACCOMMODATE ACTUAL CONTOURS IDENTIFIED IN FIELD DURING VARIOUS PHASES OF THE PROJECT.



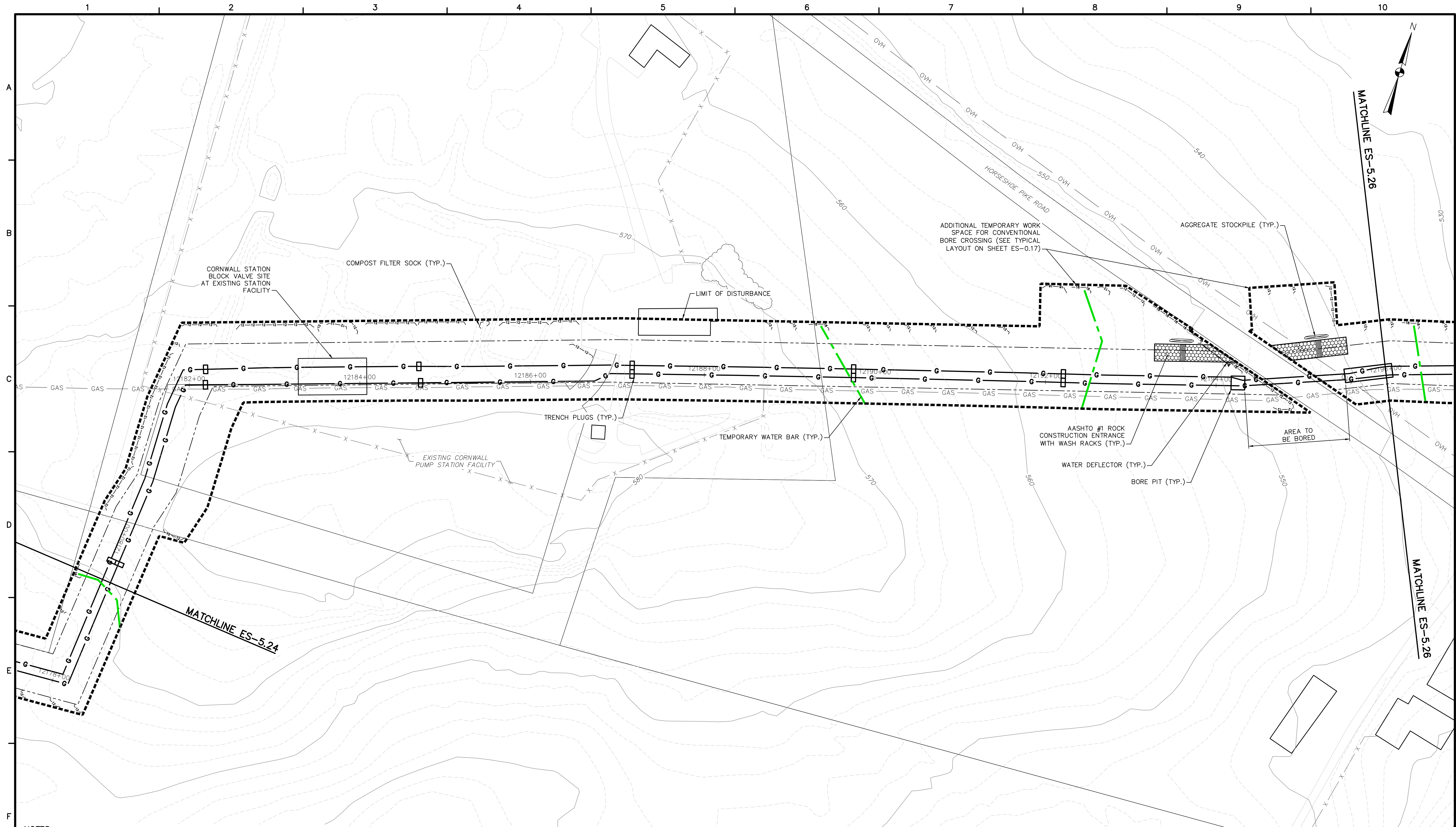
 TETRA TECH <small>www.tetrattech.com</small> <small>661 ANDERSEN DRIVE - FOSTER PLAZA 7 PITTSBURGH, PA 15220 T: (412) 921-7090 F: (412) 921-4040</small>	REVISIONS		REMARKS
	NO.	BY	DATE



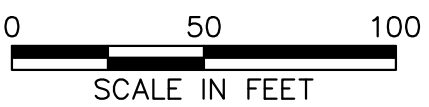
SUNOCO PIPELINE L.P.
 PHILADELPHIA, PENNSYLVANIA
PENNSYLVANIA PIPELINE PROJECT
CONSTRUCTION SPREAD 5

1-20" & 1-16" PROPOSED WELDED STEEL NATURAL GAS LIQUIDS PIPELINES
LEBANON COUNTY CONSERVATION DISTRICT
EROSION & SEDIMENT CONTROL &
SITE RESTORATION PLAN
SHEET 24 OF 69

DATE:	NOVEMBER 2016
PROJECT NO.:	112C05958
DESIGNED BY:	JB
DRAWN BY:	GR
CHECKED BY:	RS
COPYRIGHT TETRA TECH INC.	
ES-5.24	
SHEET 5.24 OF 95	

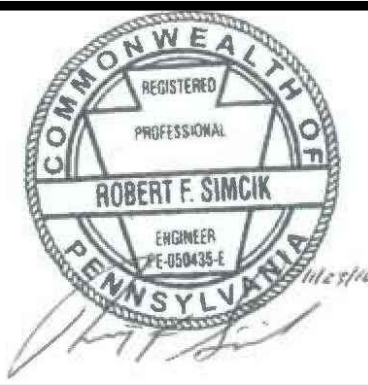


- NOTES:
- SEE ES-0.01 & ES-0.02 FOR GENERAL NOTES & LEGEND.
 - SEE ES-0.03 FOR STREAM & WETLAND CROSSING TABLES.
 - BMP INSTALLATION TO BE ADJUSTED AS NEEDED TO ACCOMMODATE ACTUAL CONTOURS IDENTIFIED IN FIELD DURING VARIOUS PHASES OF THE PROJECT.



TETRA TECH
 www.tetrattech.com
 661 ANDERSEN DRIVE - FOSTER PLAZA 7
 PITTSBURGH, PA 15220
 T: (412) 921-7090 | F: (412) 921-4040

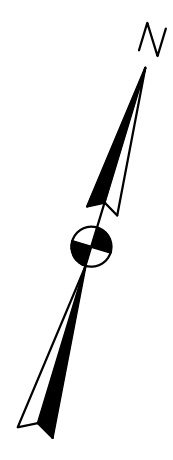
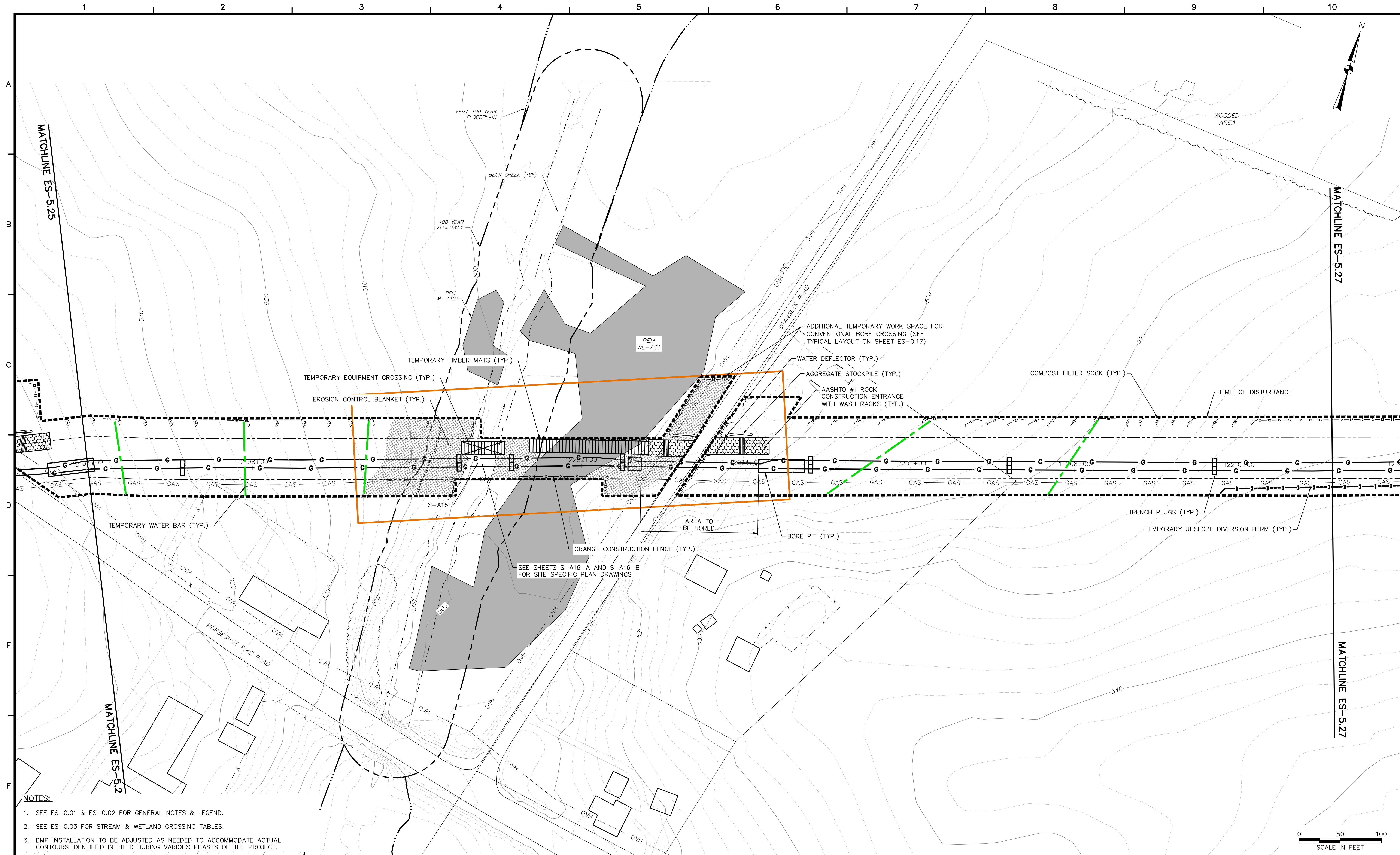
REVISIONS			
NO.	BY	DATE	REMARKS



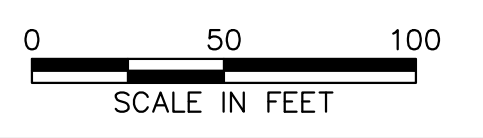
SUNOCO PIPELINE L.P.
 PHILADELPHIA, PENNSYLVANIA
**PENNSYLVANIA PIPELINE PROJECT
 CONSTRUCTION SPREAD 5**

1-20" & 1-16" PROPOSED WELDED STEEL NATURAL GAS LIQUIDS PIPELINES
 LEBANON COUNTY CONSERVATION DISTRICT
**EROSION & SEDIMENT CONTROL &
 SITE RESTORATION PLAN
 SHEET 25 OF 69**

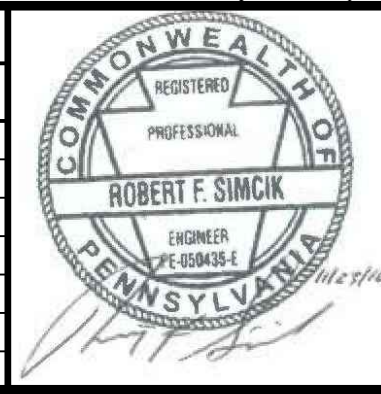
DATE:	NOVEMBER 2016
PROJECT NO.:	112C05958
DESIGNED BY:	JB
DRAWN BY:	GR
CHECKED BY:	RS
COPYRIGHT TETRA TECH INC.	
ES-5.25	
SHEET 25 OF 69	



- NOTES:**
- SEE ES-0.01 & ES-0.02 FOR GENERAL NOTES & LEGEND.
 - SEE ES-0.03 FOR STREAM & WETLAND CROSSING TABLES.
 - BMP INSTALLATION TO BE ADJUSTED AS NEEDED TO ACCOMMODATE ACTUAL CONTOURS IDENTIFIED IN FIELD DURING VARIOUS PHASES OF THE PROJECT.



REVISIONS			
NO.	BY	DATE	REMARKS



SUNOCO PIPELINE L.P.
 PHILADELPHIA, PENNSYLVANIA
**PENNSYLVANIA PIPELINE PROJECT
 CONSTRUCTION SPREAD 5**

1-20" & 1-16" PROPOSED WELDED STEEL NATURAL GAS LIQUIDS PIPELINES
 LEBANON COUNTY CONSERVATION DISTRICT
**EROSION & SEDIMENT CONTROL &
 SITE RESTORATION PLAN**
ES-5.26
 SHEET 26 OF 69

DATE:	NOVEMBER 2016
PROJECT NO.:	112C05958
DESIGNED BY:	JB
DRAWN BY:	GR
CHECKED BY:	RS
COPYRIGHT TETRA TECH INC.	

TETRA TECH
 www.tetrattech.com
 661 ANDERSEN DRIVE - FOSTER PLAZA 7
 PITTSBURGH, PA 15220
 T: (412) 921-7090 | F: (412) 921-4040



- NOTES:**
- SEE ES-0.01 & ES-0.02 FOR GENERAL NOTES & LEGEND.
 - SEE ES-0.03 FOR STREAM & WETLAND CROSSING TABLES.
 - BMP INSTALLATION TO BE ADJUSTED AS NEEDED TO ACCOMMODATE ACTUAL CONTOURS IDENTIFIED IN FIELD DURING VARIOUS PHASES OF THE PROJECT.

TETRA TECH
www.tetrattech.com
661 ANDERSEN DRIVE - FOSTER PLAZA 7
PITTSBURGH, PA 15220
T: (412) 921-7090 | F: (412) 921-4040

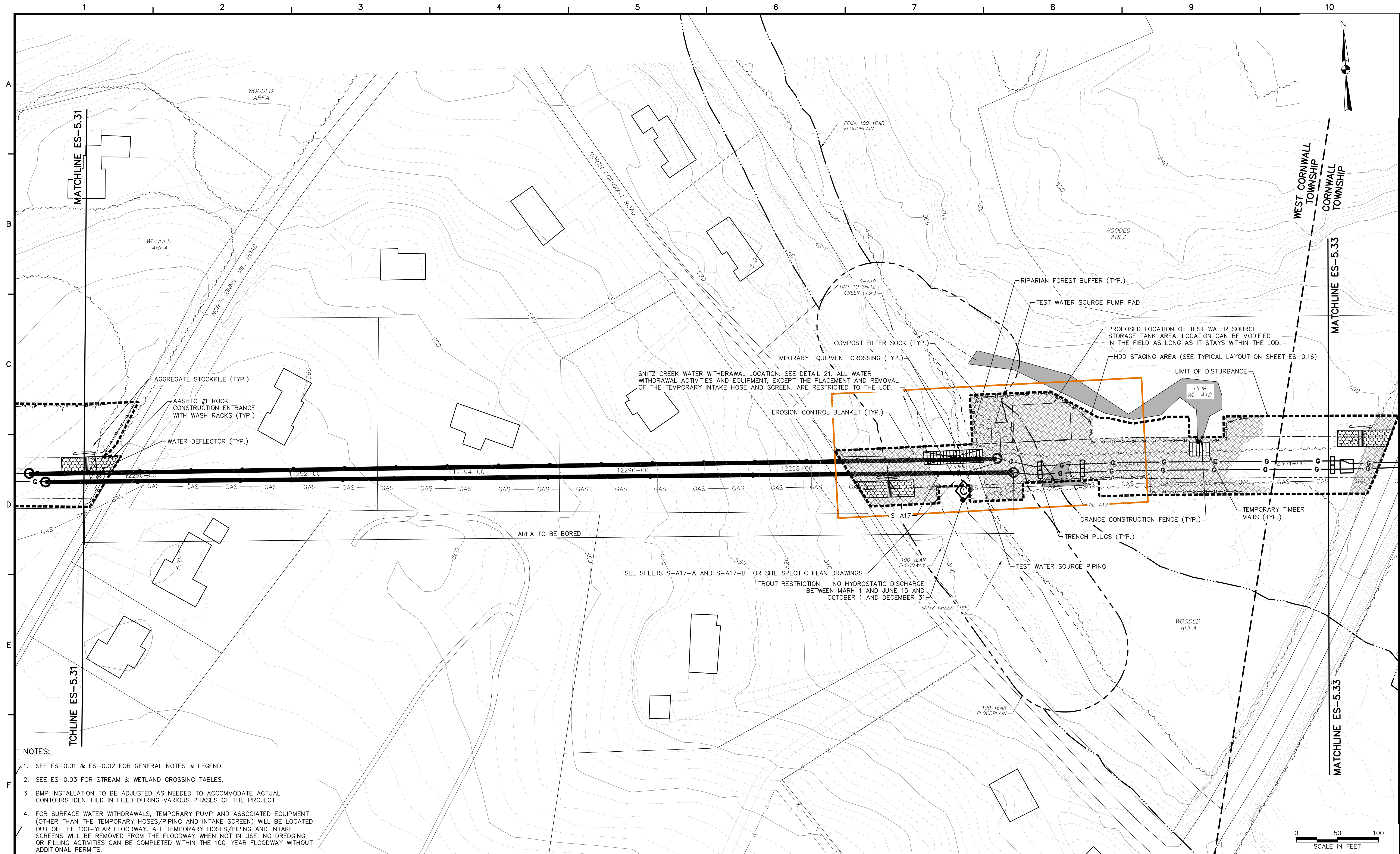
REVISIONS			
NO.	BY	DATE	REMARKS



SUNOCO PIPELINE L.P.
PHILADELPHIA, PENNSYLVANIA
**PENNSYLVANIA PIPELINE PROJECT
CONSTRUCTION SPREAD 5**

1-20" & 1-16" PROPOSED WELDED STEEL NATURAL GAS LIQUIDS PIPELINES
LEBANON COUNTY CONSERVATION DISTRICT
**EROSION & SEDIMENT CONTROL &
SITE RESTORATION PLAN**
SHEET 31 OF 69

DATE:	NOVEMBER 2016
PROJECT NO.:	112C05958
DESIGNED BY:	JB
DRAWN BY:	GR
CHECKED BY:	RS
COPYRIGHT TETRA TECH INC.	
ES-5.31	
SHEET 5.31 OF 95	

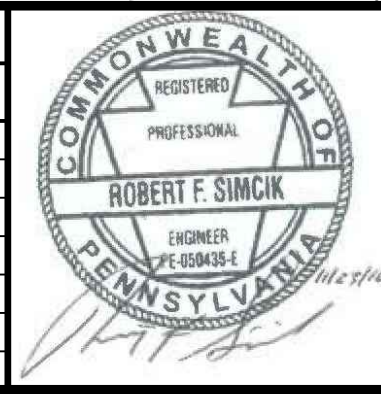


NOTES:

1. SEE ES-0.01 & ES-0.02 FOR GENERAL NOTES & LEGEND.
2. SEE ES-0.03 FOR STREAM & WETLAND CROSSING TABLES.
3. BMP INSTALLATION TO BE ADJUSTED AS NEEDED TO ACCOMMODATE ACTUAL CONTOURS IDENTIFIED IN FIELD DURING VARIOUS PHASES OF THE PROJECT.
4. FOR SURFACE WATER WITHDRAWALS, TEMPORARY PUMP AND ASSOCIATED EQUIPMENT (OTHER THAN THE TEMPORARY HOSES/PIPING AND INTAKE SCREEN) WILL BE LOCATED OUT OF THE 100-YEAR FLOODWAY. ALL TEMPORARY HOSES/PIPING AND INTAKE SCREENS WILL BE REMOVED FROM THE FLOODWAY WHEN NOT IN USE. NO DREDGING OR FILLING ACTIVITIES CAN BE COMPLETED WITHIN THE 100-YEAR FLOODWAY WITHOUT ADDITIONAL PERMITS.

TETRA TECH
www.tetrattech.com
661 ANDERSEN DRIVE - FOSTER PLAZA 7
PITTSBURGH, PA 15220
T: (412) 921-7090 | F: (412) 921-4040

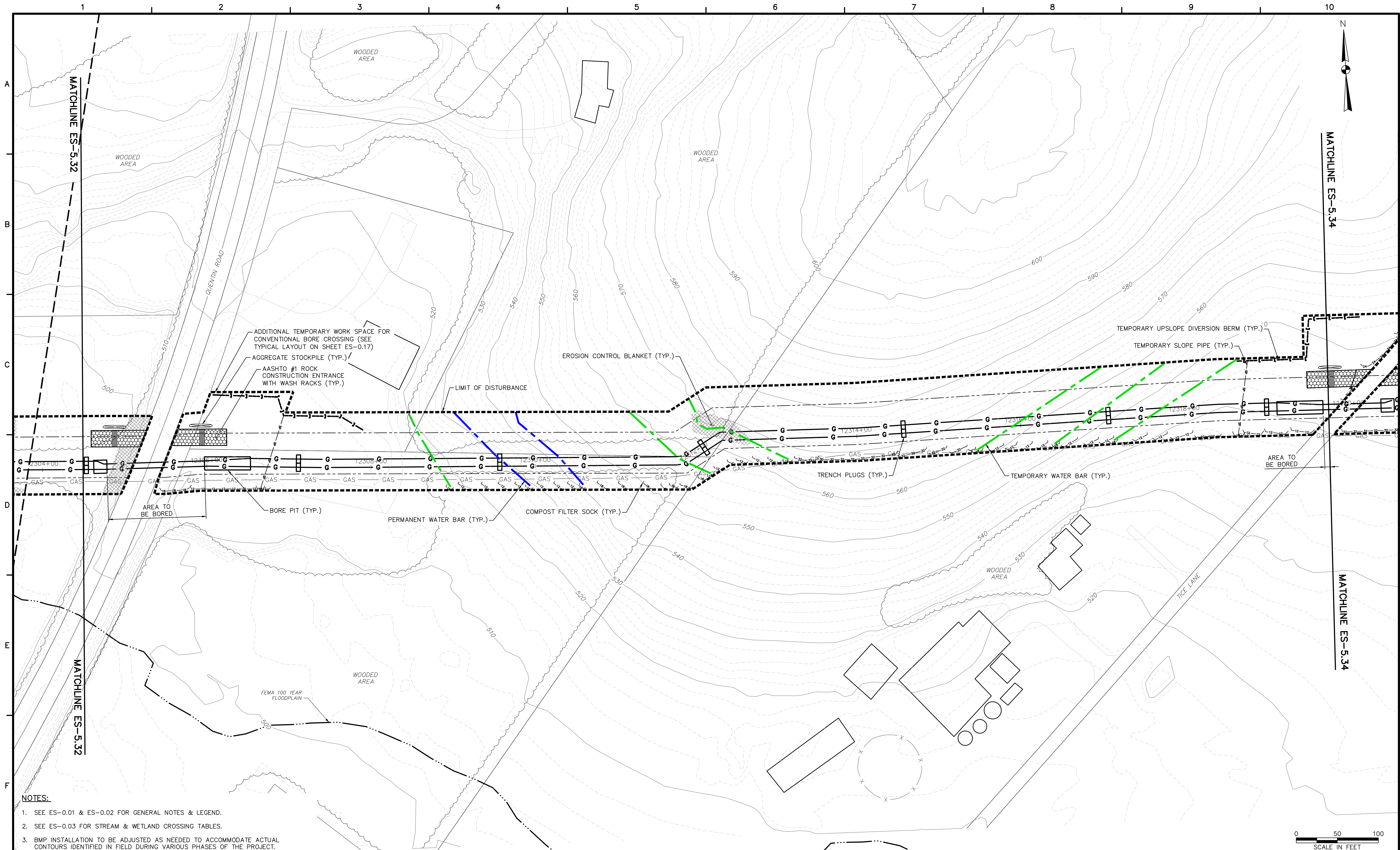
REVISIONS			
NO.	BY	DATE	REMARKS



SUNOCO PIPELINE L.P.
PHILADELPHIA, PENNSYLVANIA
PENNSYLVANIA PIPELINE PROJECT
CONSTRUCTION SPREAD 5

1-20" & 1-16" PROPOSED WELDED STEEL NATURAL GAS LIQUIDS PIPELINES
LEBANON COUNTY CONSERVATION DISTRICT
EROSION & SEDIMENT CONTROL &
SITE RESTORATION PLAN
SHEET 32 OF 69

DATE:	NOVEMBER 2016
PROJECT NO.:	112C05958
DESIGNED BY:	JB
DRAWN BY:	GR
CHECKED BY:	RS
COPYRIGHT TETRA TECH INC.	
ES-5.32	
SHEET 5.32 OF 95	

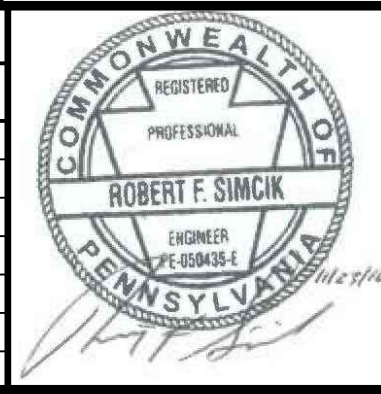


- NOTES:**
1. SEE ES-0.01 & ES-0.02 FOR GENERAL NOTES & LEGEND.
 2. SEE ES-0.03 FOR STREAM & WETLAND CROSSING TABLES.
 3. BMP INSTALLATION TO BE ADJUSTED AS NEEDED TO ACCOMMODATE ACTUAL CONTOURS IDENTIFIED IN FIELD DURING VARIOUS PHASES OF THE PROJECT.



TETRA TECH
www.tetrattech.com
661 ANDERSEN DRIVE - FOSTER PLAZA 7
PITTSBURGH, PA 15220
T: (412) 921-7090 | F: (412) 921-4040

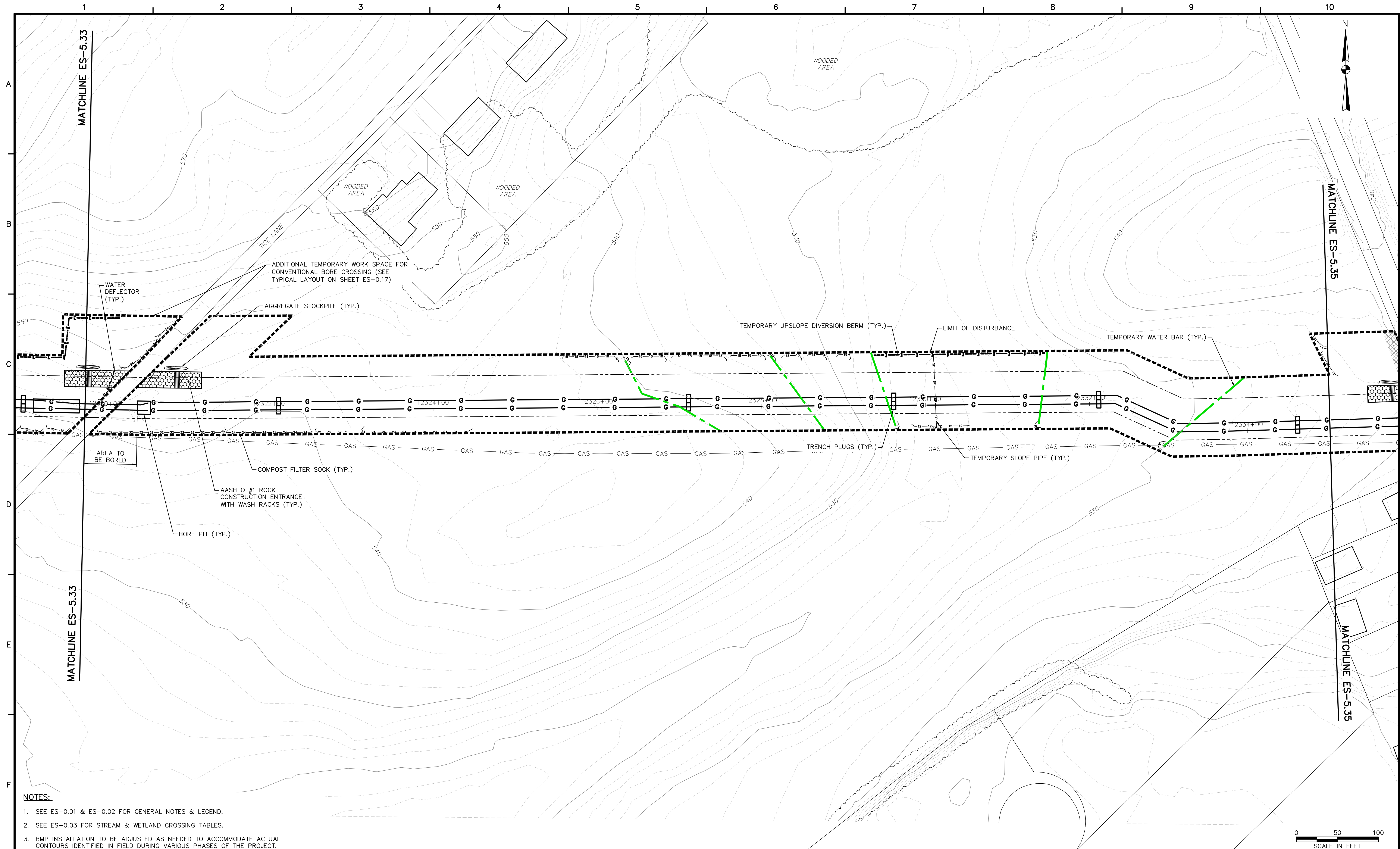
REVISIONS			
NO.	BY	DATE	REMARKS



SUNOCO PIPELINE L.P.
PHILADELPHIA, PENNSYLVANIA
**PENNSYLVANIA PIPELINE PROJECT
CONSTRUCTION SPREAD 5**

1-20" & 1-16" PROPOSED WELDED STEEL NATURAL GAS LIQUIDS PIPELINES
LEBANON COUNTY CONSERVATION DISTRICT
EROSION & SEDIMENT CONTROL &
SITE RESTORATION PLAN
SHEET 33 OF 69

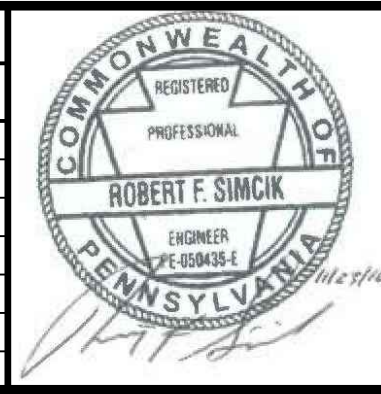
DATE:	NOVEMBER 2016
PROJECT NO.:	112C05958
DESIGNED BY:	JB
DRAWN BY:	GR
CHECKED BY:	RS
COPYRIGHT TETRA TECH INC.	
ES-5.33	
SHEET 5.33 OF 95	



- NOTES:**
1. SEE ES-0.01 & ES-0.02 FOR GENERAL NOTES & LEGEND.
 2. SEE ES-0.03 FOR STREAM & WETLAND CROSSING TABLES.
 3. BMP INSTALLATION TO BE ADJUSTED AS NEEDED TO ACCOMMODATE ACTUAL CONTOURS IDENTIFIED IN FIELD DURING VARIOUS PHASES OF THE PROJECT.

TETRA TECH
www.tetrattech.com
661 ANDERSEN DRIVE - FOSTER PLAZA 7
PITTSBURGH, PA 15220
T: (412) 921-7090 | F: (412) 921-4040

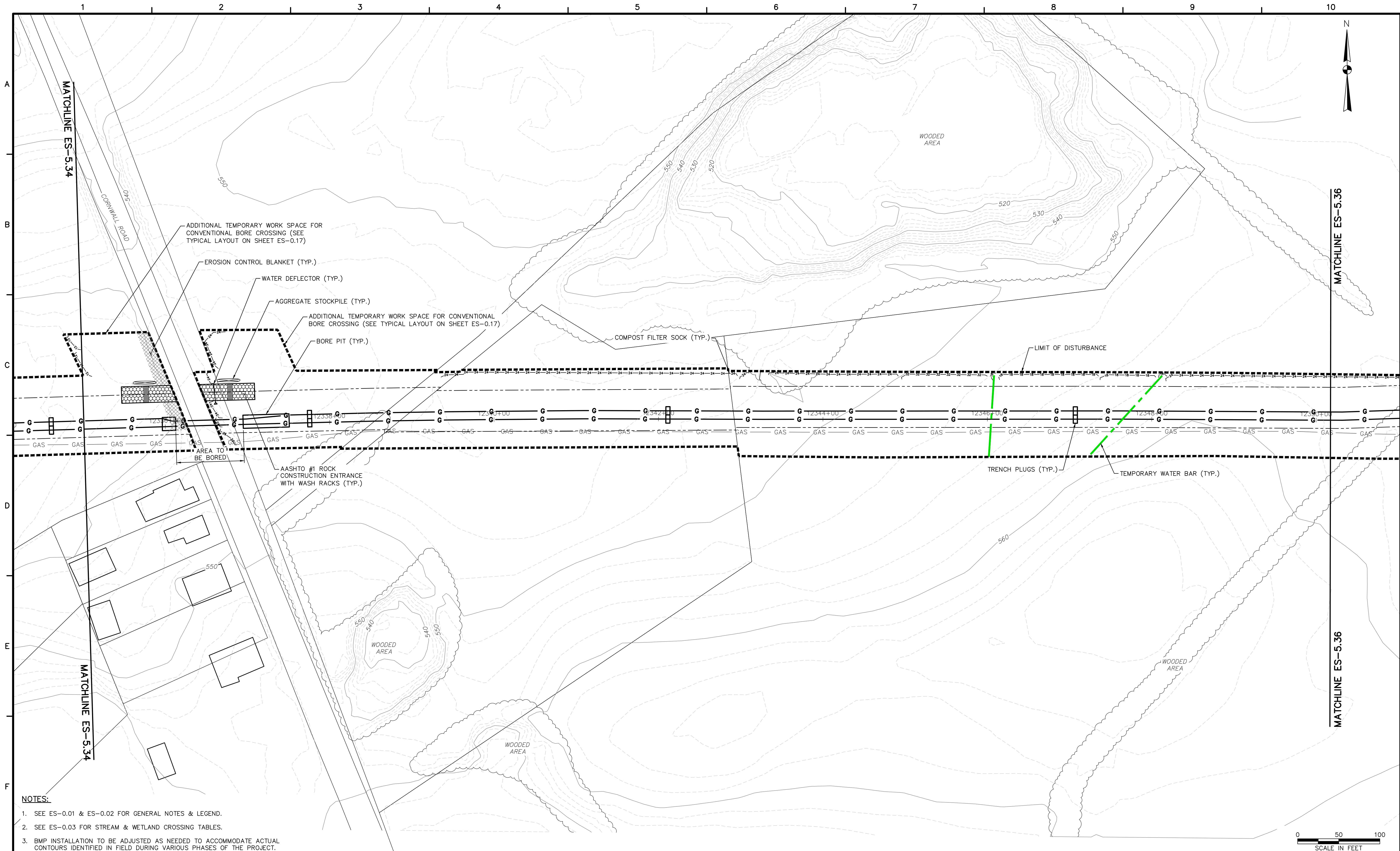
REVISIONS			
NO.	BY	DATE	REMARKS



SUNOCO PIPELINE L.P.
PHILADELPHIA, PENNSYLVANIA
**PENNSYLVANIA PIPELINE PROJECT
CONSTRUCTION SPREAD 5**

1-20" & 1-16" PROPOSED WELDED STEEL NATURAL GAS LIQUIDS PIPELINES
LEBANON COUNTY CONSERVATION DISTRICT
EROSION & SEDIMENT CONTROL &
SITE RESTORATION PLAN
SHEET 34 OF 69

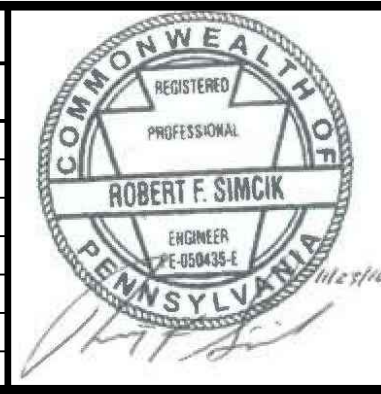
DATE:	NOVEMBER 2016
PROJECT NO.:	112C05958
DESIGNED BY:	JB
DRAWN BY:	GR
CHECKED BY:	RS
COPYRIGHT TETRA TECH INC.	
ES-5.34	
SHEET 5.34 OF 95	



- NOTES:**
- SEE ES-0.01 & ES-0.02 FOR GENERAL NOTES & LEGEND.
 - SEE ES-0.03 FOR STREAM & WETLAND CROSSING TABLES.
 - BMP INSTALLATION TO BE ADJUSTED AS NEEDED TO ACCOMMODATE ACTUAL CONTOURS IDENTIFIED IN FIELD DURING VARIOUS PHASES OF THE PROJECT.

TETRA TECH
www.tetrattech.com
661 ANDERSEN DRIVE - FOSTER PLAZA 7
PITTSBURGH, PA 15220
T: (412) 921-7090 | F: (412) 921-4040

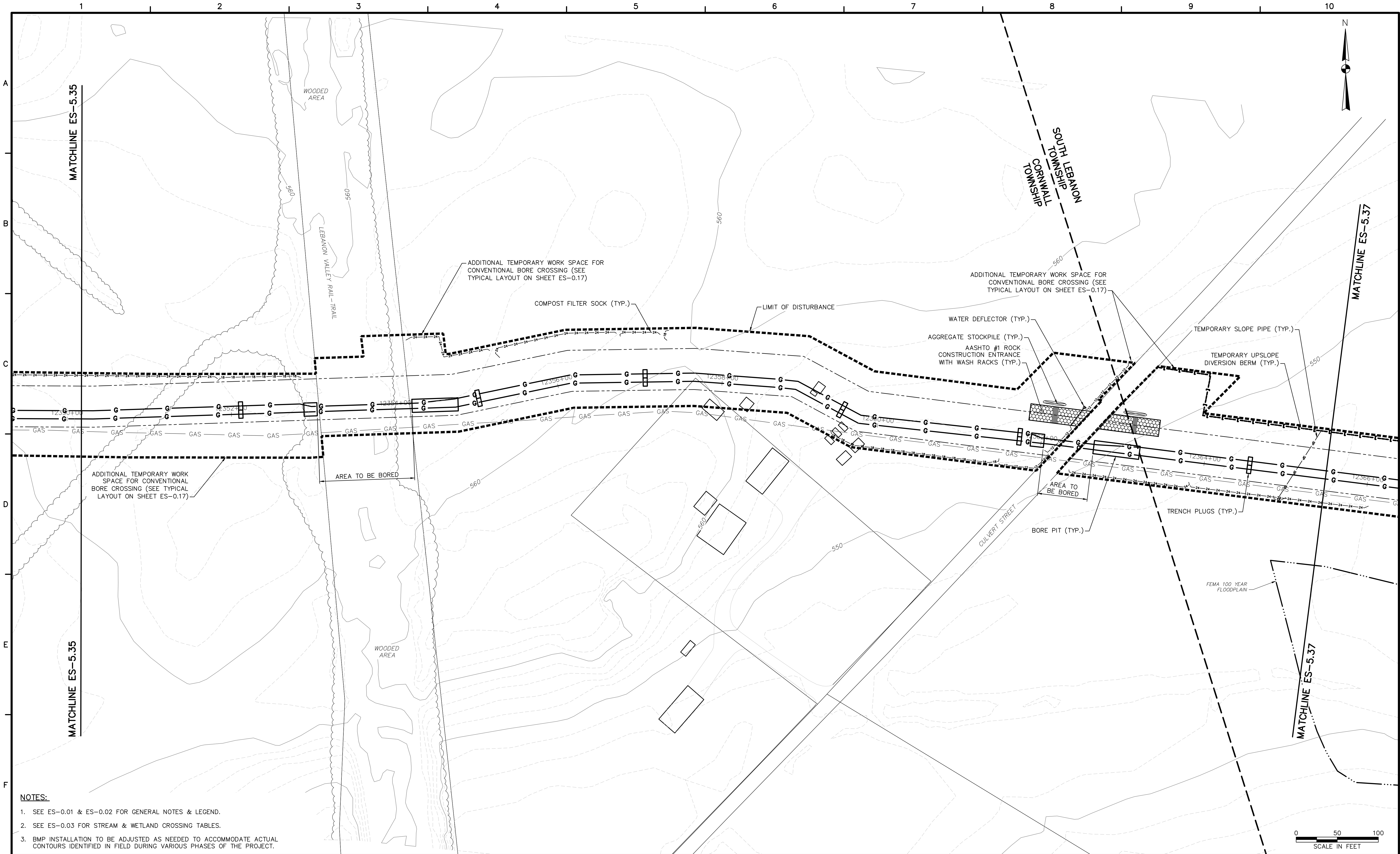
REVISIONS			
NO.	BY	DATE	REMARKS



SUNOCO PIPELINE L.P.
PHILADELPHIA, PENNSYLVANIA
**PENNSYLVANIA PIPELINE PROJECT
CONSTRUCTION SPREAD 5**

1-20" & 1-16" PROPOSED WELDED STEEL NATURAL GAS LIQUIDS PIPELINES
LEBANON COUNTY CONSERVATION DISTRICT
EROSION & SEDIMENT CONTROL &
SITE RESTORATION PLAN
SHEET 35 OF 69

DATE:	NOVEMBER 2016
PROJECT NO.:	112C05958
DESIGNED BY:	JB
DRAWN BY:	GR
CHECKED BY:	RS
COPYRIGHT TETRA TECH INC.	
ES-5.35	
SHEET 35 OF 69	



NOTES:

1. SEE ES-0.01 & ES-0.02 FOR GENERAL NOTES & LEGEND.
2. SEE ES-0.03 FOR STREAM & WETLAND CROSSING TABLES.
3. BMP INSTALLATION TO BE ADJUSTED AS NEEDED TO ACCOMMODATE ACTUAL CONTOURS IDENTIFIED IN FIELD DURING VARIOUS PHASES OF THE PROJECT.

0 50 100
SCALE IN FEET



661 ANDERSEN DRIVE - FOSTER PLAZA 7
PITTSBURGH, PA 15220
T: (412) 921-7090 | F: (412) 921-4040

www.tetratotech.com

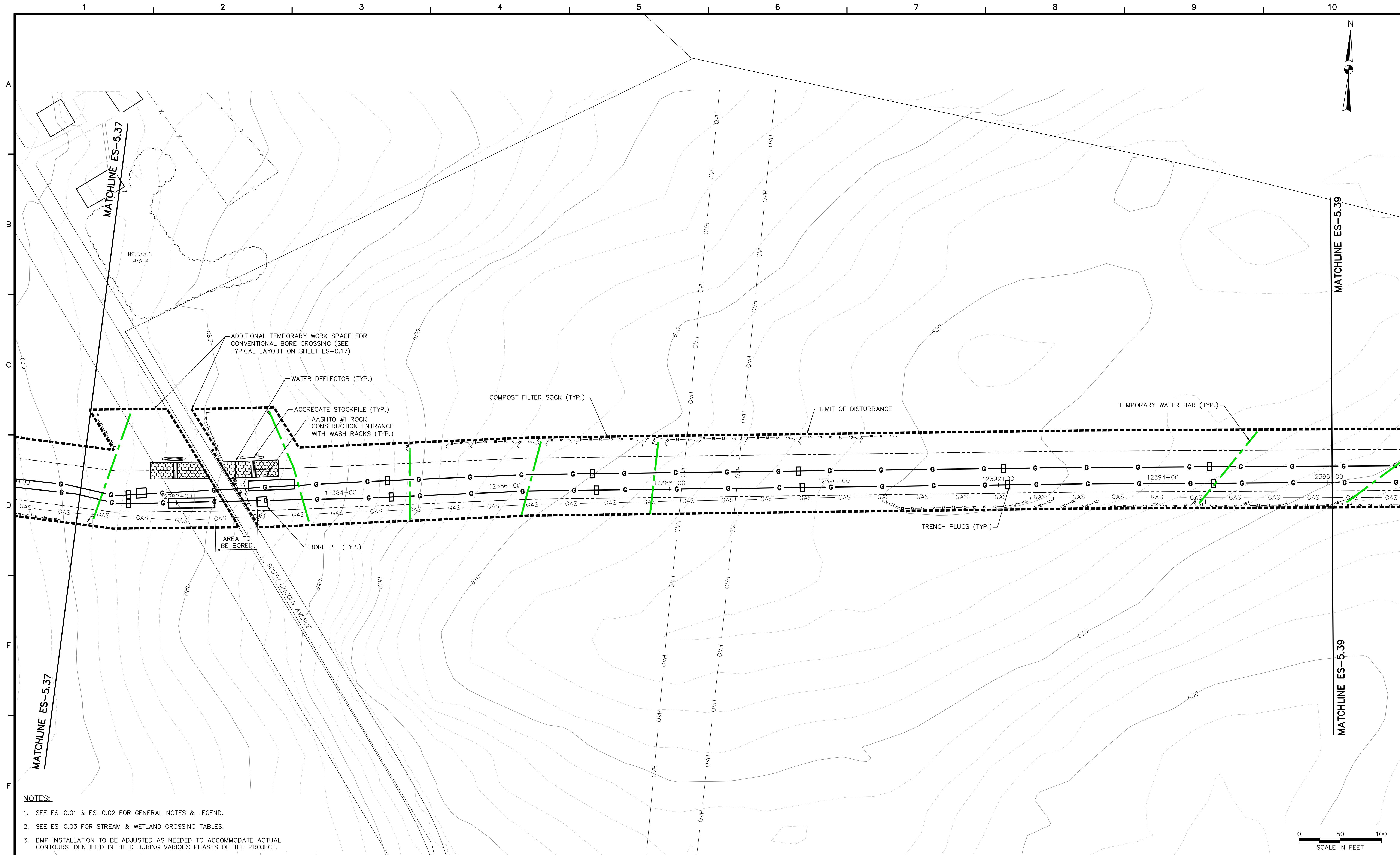
REVISIONS			
NO.	BY	DATE	REMARKS



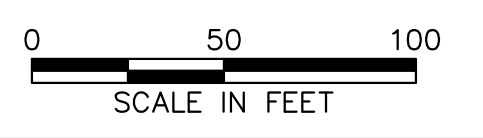
SUNOCO PIPELINE L.P.
PHILADELPHIA, PENNSYLVANIA
**PENNSYLVANIA PIPELINE PROJECT
CONSTRUCTION SPREAD 5**

1-20" & 1-16" PROPOSED WELDED STEEL NATURAL GAS LIQUIDS PIPELINES
LEBANON COUNTY CONSERVATION DISTRICT
**EROSION & SEDIMENT CONTROL &
SITE RESTORATION PLAN**
SHEET 36 OF 69

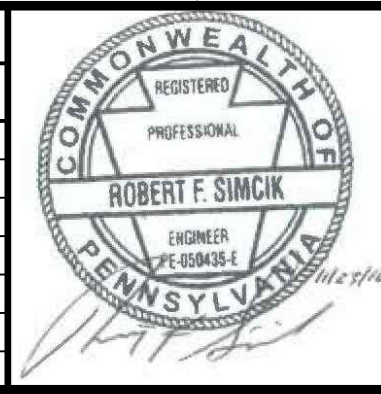
DATE:	NOVEMBER 2016
PROJECT NO.:	112C05958
DESIGNED BY:	JB
DRAWN BY:	GR
CHECKED BY:	RS
COPYRIGHT:	TETRA TECH INC.
ES-5.36	
SHEET 36 OF 69	



- NOTES:**
- SEE ES-0.01 & ES-0.02 FOR GENERAL NOTES & LEGEND.
 - SEE ES-0.03 FOR STREAM & WETLAND CROSSING TABLES.
 - BMP INSTALLATION TO BE ADJUSTED AS NEEDED TO ACCOMMODATE ACTUAL CONTOURS IDENTIFIED IN FIELD DURING VARIOUS PHASES OF THE PROJECT.



REVISIONS			
NO.	BY	DATE	REMARKS

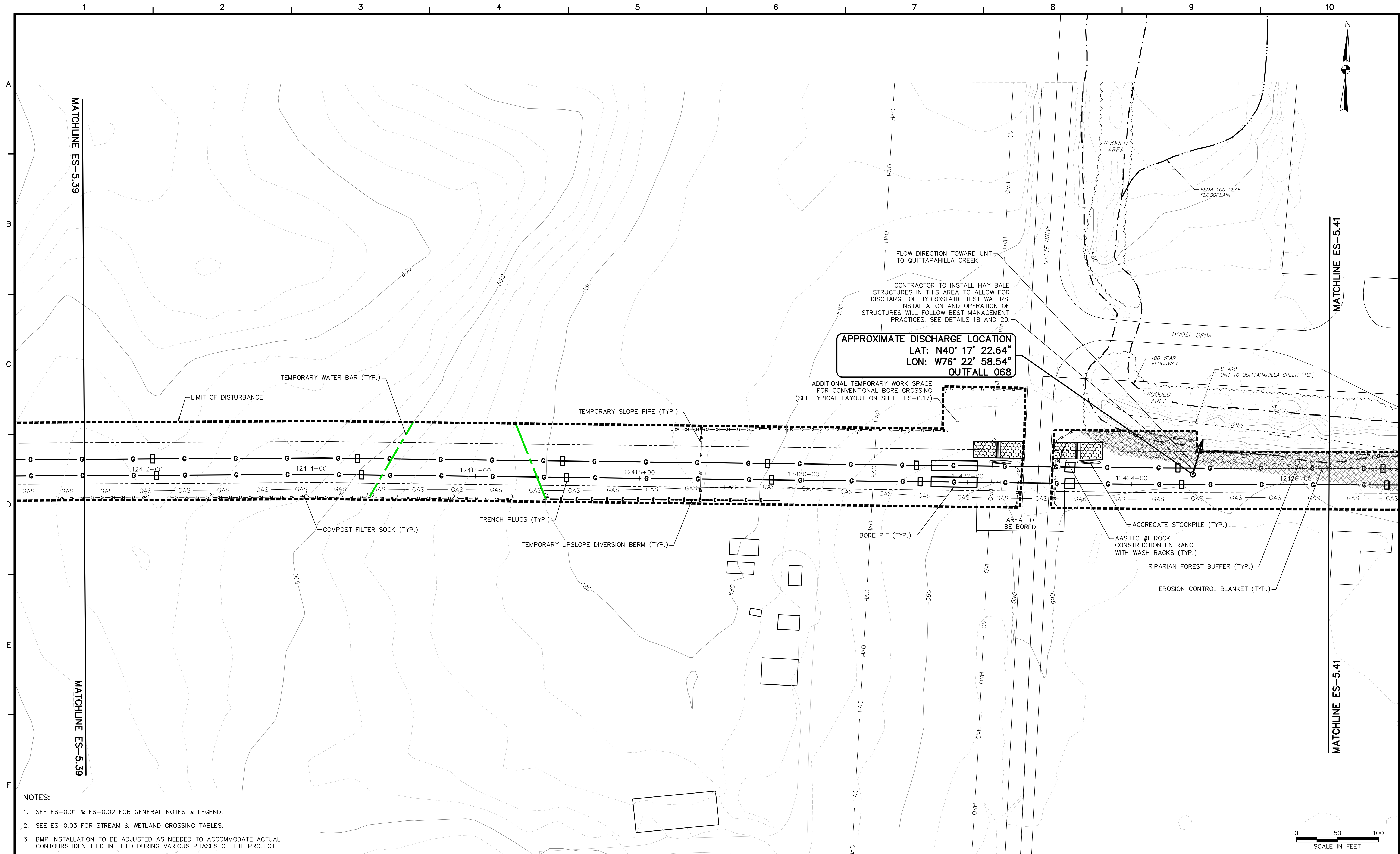


SUNOCO PIPELINE L.P.
 PHILADELPHIA, PENNSYLVANIA
PENNSYLVANIA PIPELINE PROJECT
 CONSTRUCTION SPREAD 5

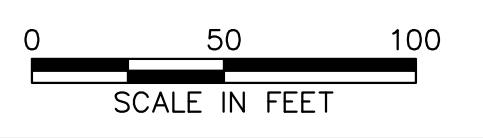
1-20" & 1-16" PROPOSED WELDED STEEL NATURAL GAS LIQUIDS PIPELINES
LEBANON COUNTY CONSERVATION DISTRICT
 EROSION & SEDIMENT CONTROL &
 SITE RESTORATION PLAN
SHEET 38 OF 69

DATE:	NOVEMBER 2016
PROJECT NO.:	112C05958
DESIGNED BY:	JB
DRAWN BY:	GR
CHECKED BY:	RS
COPYRIGHT TETRA TECH INC.	
ES-5.38	
SHEET 38 OF 69	

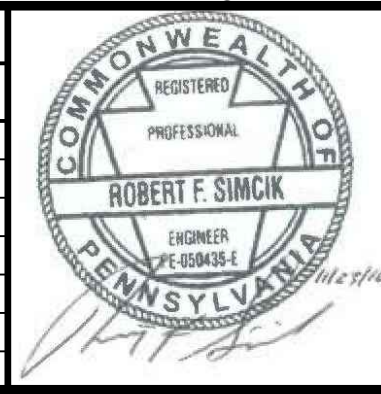
TETRA TECH
www.tetrattech.com
661 ANDERSEN DRIVE - FOSTER PLAZA 7
PITTSBURGH, PA 15220
T: (412) 921-7090 | F: (412) 921-4040



- NOTES:**
- SEE ES-0.01 & ES-0.02 FOR GENERAL NOTES & LEGEND.
 - SEE ES-0.03 FOR STREAM & WETLAND CROSSING TABLES.
 - BMP INSTALLATION TO BE ADJUSTED AS NEEDED TO ACCOMMODATE ACTUAL CONTOURS IDENTIFIED IN FIELD DURING VARIOUS PHASES OF THE PROJECT.



REVISIONS			
NO.	BY	DATE	REMARKS

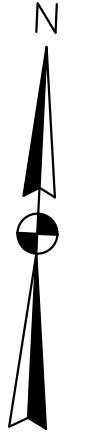
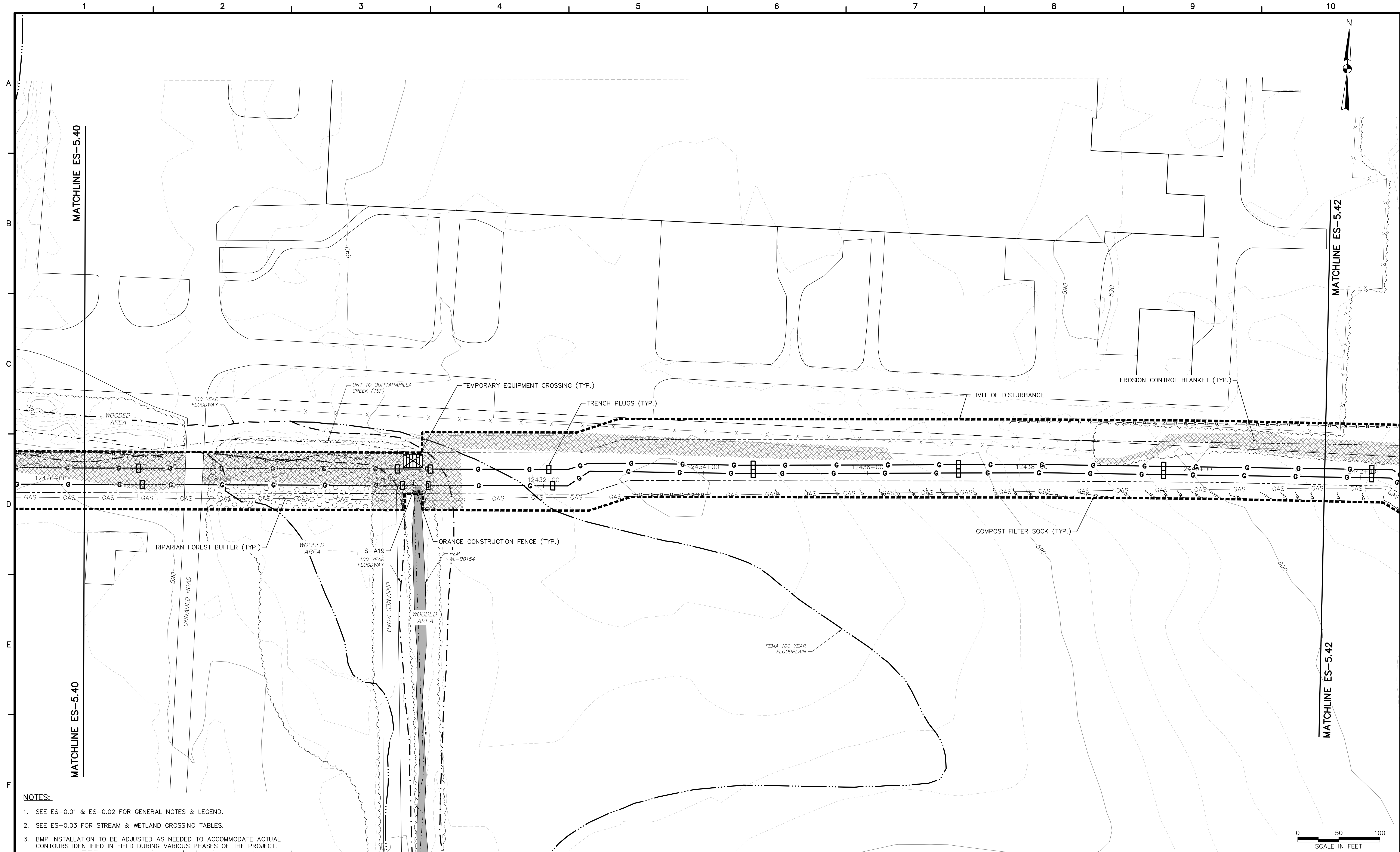


SUNOCO PIPELINE L.P.
 PHILADELPHIA, PENNSYLVANIA
**PENNSYLVANIA PIPELINE PROJECT
 CONSTRUCTION SPREAD 5**

1-20" & 1-16" PROPOSED WELDED STEEL NATURAL GAS LIQUIDS PIPELINES
 LEBANON COUNTY CONSERVATION DISTRICT
**EROSION & SEDIMENT CONTROL &
 SITE RESTORATION PLAN**
 SHEET 40 OF 69

DATE:	NOVEMBER 2016
PROJECT NO.:	112C05958
DESIGNED BY:	JB
DRAWN BY:	GR
CHECKED BY:	RS
COPYRIGHT:	TETRA TECH INC.
ES-5.40	
SHEET 40 OF 69	

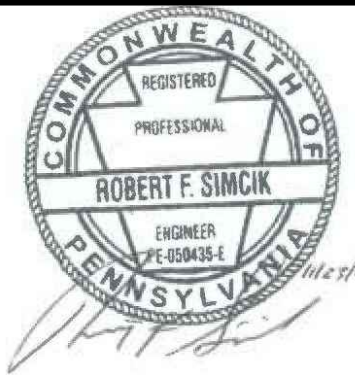




- NOTES:**
1. SEE ES-0.01 & ES-0.02 FOR GENERAL NOTES & LEGEND.
 2. SEE ES-0.03 FOR STREAM & WETLAND CROSSING TABLES.
 3. BMP INSTALLATION TO BE ADJUSTED AS NEEDED TO ACCOMMODATE ACTUAL CONTOURS IDENTIFIED IN FIELD DURING VARIOUS PHASES OF THE PROJECT.

REVISIONS

NO.	BY	DATE	REMARKS



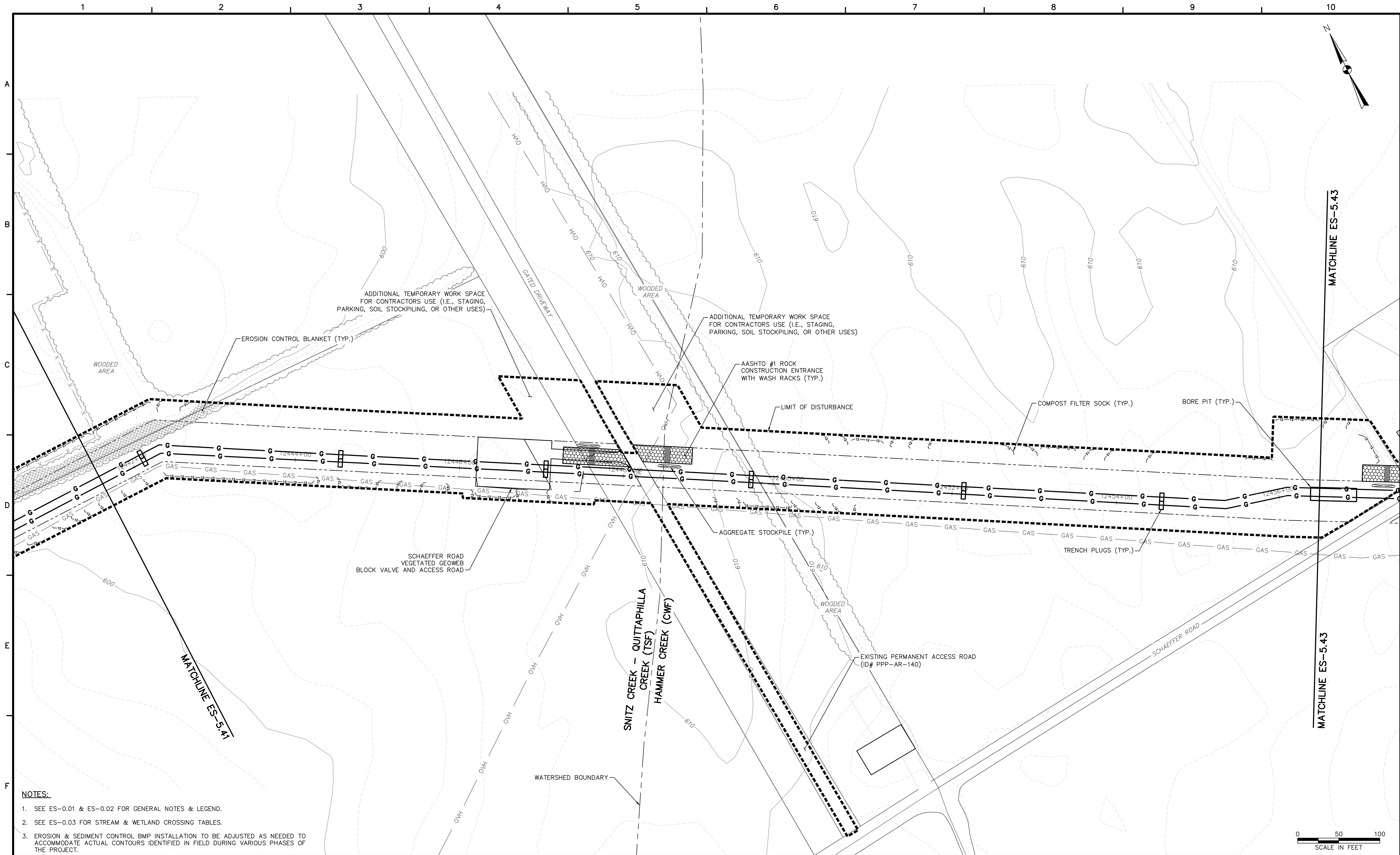
**SUNOCO PIPELINE L.P.
PHILADELPHIA, PENNSYLVANIA
PENNSYLVANIA PIPELINE PROJECT
CONSTRUCTION SPREAD 5**

**1-20" & 1-16" PROPOSED WELDED STEEL NATURAL GAS LIQUIDS PIPELINES
LEBANON COUNTY CONSERVATION DISTRICT
EROSION & SEDIMENT CONTROL &
SITE RESTORATION PLAN
SHEET 41 OF 69**

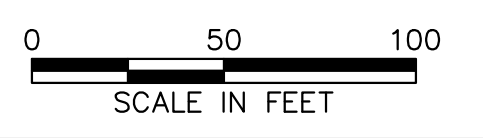
DATE:	NOVEMBER 2016
PROJECT NO.:	112C05958
DESIGNED BY:	JB
DRAWN BY:	GR
CHECKED BY:	RS
COPYRIGHT:	TETRA TECH INC.
ES-5.41	
SHEET 5.41 OF 95	



www.tetratech.com
661 ANDERSEN DRIVE - FOSTER PLAZA 7
PITTSBURGH, PA 15220
T: (412) 921-7090 | F: (412) 921-4040

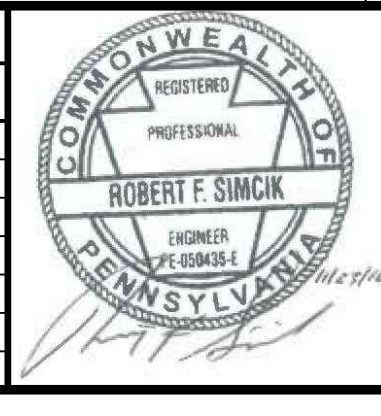


- NOTES:**
- SEE ES-0.01 & ES-0.02 FOR GENERAL NOTES & LEGEND.
 - SEE ES-0.03 FOR STREAM & WETLAND CROSSING TABLES.
 - EROSION & SEDIMENT CONTROL BMP INSTALLATION TO BE ADJUSTED AS NEEDED TO ACCOMMODATE ACTUAL CONTOURS IDENTIFIED IN FIELD DURING VARIOUS PHASES OF THE PROJECT.



TETRA TECH
www.tetrattech.com
661 ANDERSEN DRIVE - FOSTER PLAZA 7
PITTSBURGH, PA 15220
T: (412) 921-7090 | F: (412) 921-4040

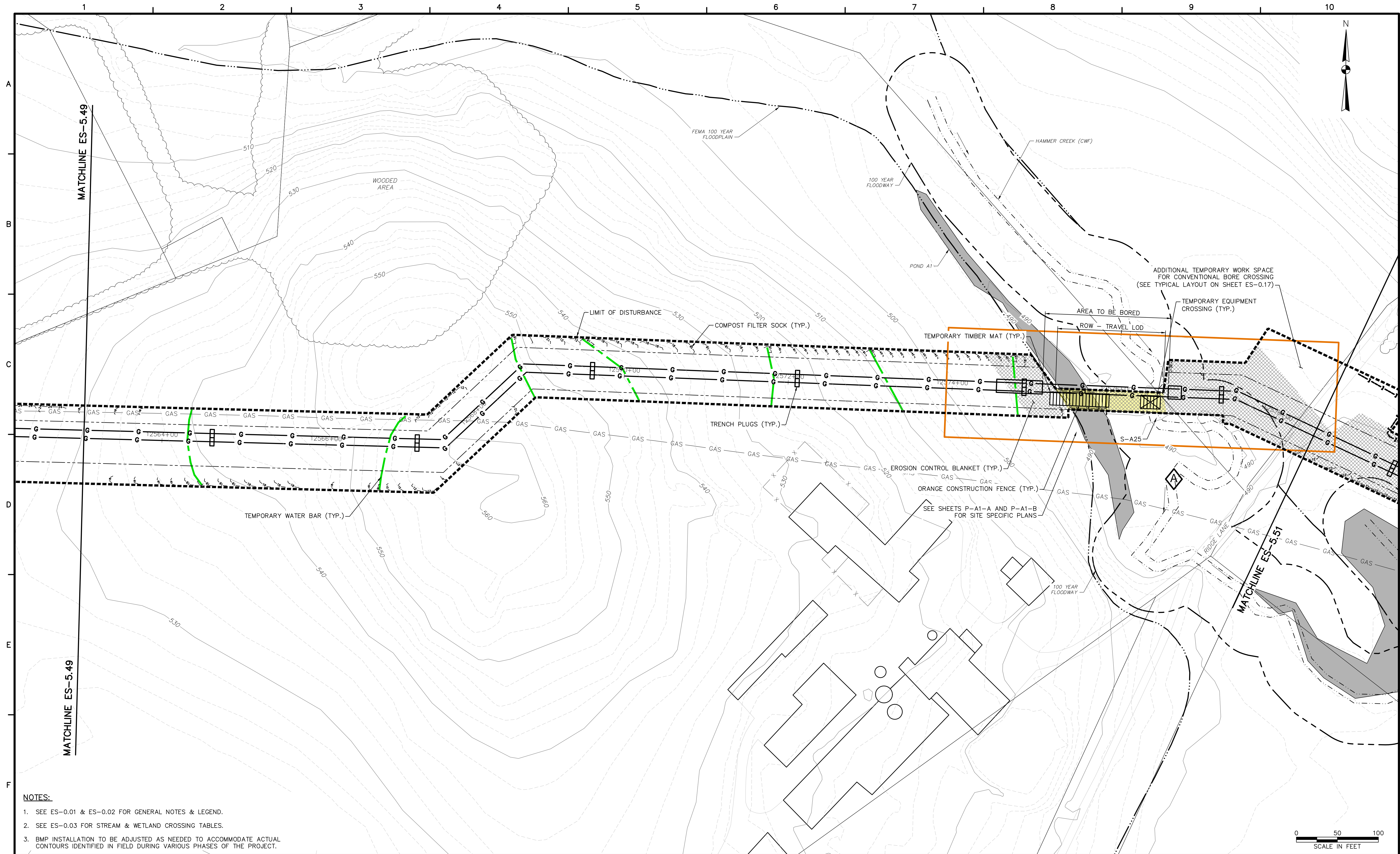
REVISIONS			
NO.	BY	DATE	REMARKS



SUNOCO PIPELINE L.P.
PHILADELPHIA, PENNSYLVANIA
**PENNSYLVANIA PIPELINE PROJECT
CONSTRUCTION SPREAD 5**

1-20" & 1-16" PROPOSED WELDED STEEL NATURAL GAS LIQUIDS PIPELINES
LEBANON COUNTY CONSERVATION DISTRICT
EROSION & SEDIMENT CONTROL &
SITE RESTORATION PLAN
SHEET 42 OF 69

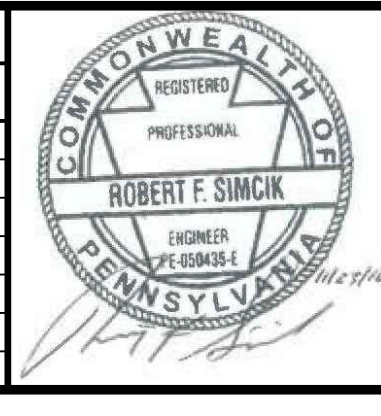
DATE:	NOVEMBER 2016
PROJECT NO.:	112C05958
DESIGNED BY:	JB
DRAWN BY:	GR
CHECKED BY:	RS
COPYRIGHT TETRA TECH INC.	
ES-5.42	
SHEET 5.42 OF 95	



- NOTES:**
- SEE ES-0.01 & ES-0.02 FOR GENERAL NOTES & LEGEND.
 - SEE ES-0.03 FOR STREAM & WETLAND CROSSING TABLES.
 - BMP INSTALLATION TO BE ADJUSTED AS NEEDED TO ACCOMMODATE ACTUAL CONTOURS IDENTIFIED IN FIELD DURING VARIOUS PHASES OF THE PROJECT.

TETRA TECH
 www.tetrattech.com
 661 ANDERSEN DRIVE - FOSTER PLAZA 7
 PITTSBURGH, PA 15220
 T: (412) 921-7090 | F: (412) 921-4040

REVISIONS			
NO.	BY	DATE	REMARKS



SUNOCO PIPELINE L.P.
 PHILADELPHIA, PENNSYLVANIA
**PENNSYLVANIA PIPELINE PROJECT
 CONSTRUCTION SPREAD 5**

1-20" & 1-16" PROPOSED WELDED STEEL NATURAL GAS LIQUIDS PIPELINES
 LEBANON COUNTY CONSERVATION DISTRICT
**EROSION & SEDIMENT CONTROL &
 SITE RESTORATION PLAN
 SHEET 50 OF 69**

DATE:	NOVEMBER 2016
PROJECT NO.:	112C05958
DESIGNED BY:	JB
DRAWN BY:	GR
CHECKED BY:	RS
COPYRIGHT TETRA TECH INC.	
ES-5.50	
SHEET 5.50 OF 95	